



Chipsmall Limited consists of a professional team with an average of over 10 year of expertise in the distribution of electronic components. Based in Hongkong, we have already established firm and mutual-benefit business relationships with customers from,Europe,America and south Asia,supplying obsolete and hard-to-find components to meet their specific needs.

With the principle of “Quality Parts,Customers Priority,Honest Operation,and Considerate Service”,our business mainly focus on the distribution of electronic components. Line cards we deal with include Microchip,ALPS,ROHM,Xilinx,Pulse,ON,Everlight and Freescale. Main products comprise IC,Modules,Potentiometer,IC Socket,Relay,Connector.Our parts cover such applications as commercial,industrial, and automotives areas.

We are looking forward to setting up business relationship with you and hope to provide you with the best service and solution. Let us make a better world for our industry!



## Contact us

Tel: +86-755-8981 8866 Fax: +86-755-8427 6832

Email & Skype: [info@chipsmall.com](mailto:info@chipsmall.com) Web: [www.chipsmall.com](http://www.chipsmall.com)

Address: A1208, Overseas Decoration Building, #122 Zhenhua RD., Futian, Shenzhen, China



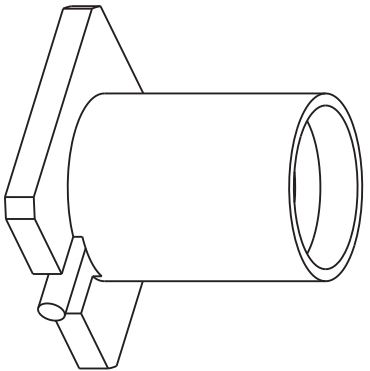
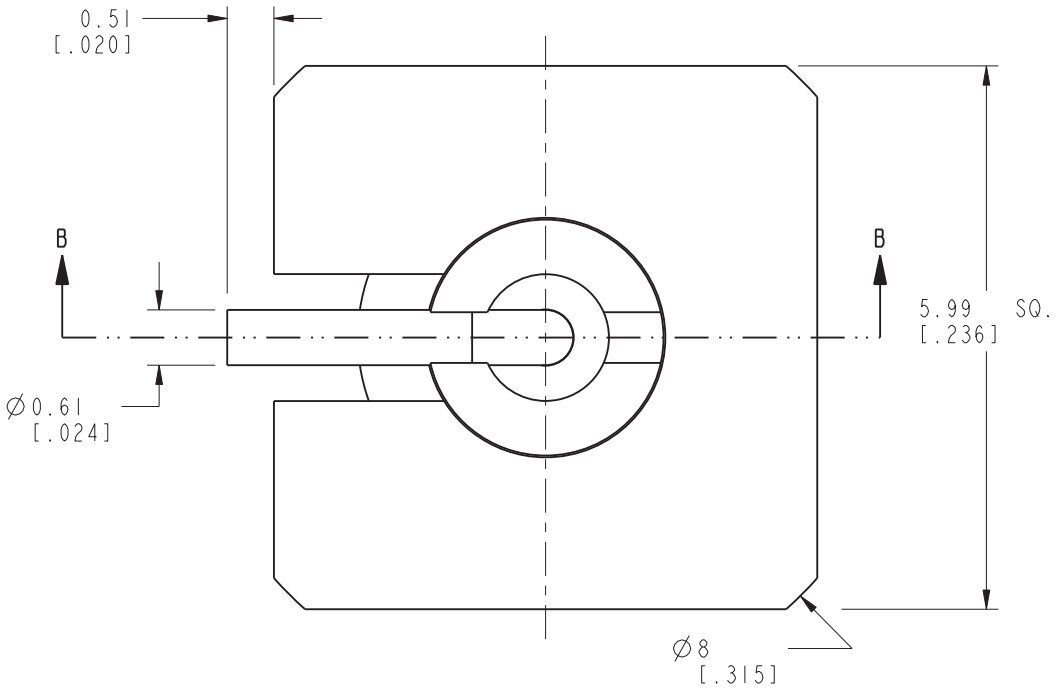
NOTES:

1. MATERIALS AND FINISHES:  
BODY - BRASS, GOLD PLATING, .000030 INCH [0.0008 MM] THICK OVER COPPER  
CONTACT - BERYLLIUM COPPER, GOLD PLATING, .000030 INCH [0.0008 MM] THICK OVER COPPER  
INSULATOR - PEEK OR LCP, NATURAL
2. ELECTRICAL:  
A. IMPEDANCE: 50 OHM  
B. FREQUENCY RANGE: DC - 12 GHz  
C. VSWR(RETURN LOSS): 1.10 (26 dB), MAX. DC-6GHz  
1.20 (21 dB), MAX. 6-12GHz  
D. DIELECTRIC WITHSTANDING VOLTAGE: 500 VRMS, MIN.
3. PHYSICAL:  
A. DURABILTIY: 500 CYCLES MIN.  
B. ENGAGEMENT FORCE: 10 LB [45 N] MAX  
C. DISENGAGEMENT FORCE: 2 LB [9 N] MIN  
D. INNER CONTACT RETENTION FORCE: 1.5 LB [7 N] MIN  
E. TEMERATURE RANGE: -65° C TO 165° C  
F. INSULATOR MATERIAL RATED TO UL94 V-0
4. PACKAGING:  
A. QUANTITY: SINGLE PACK  
B. MARKING: AMPHENOL, SMP-MSLD-PCR, DATE CODE

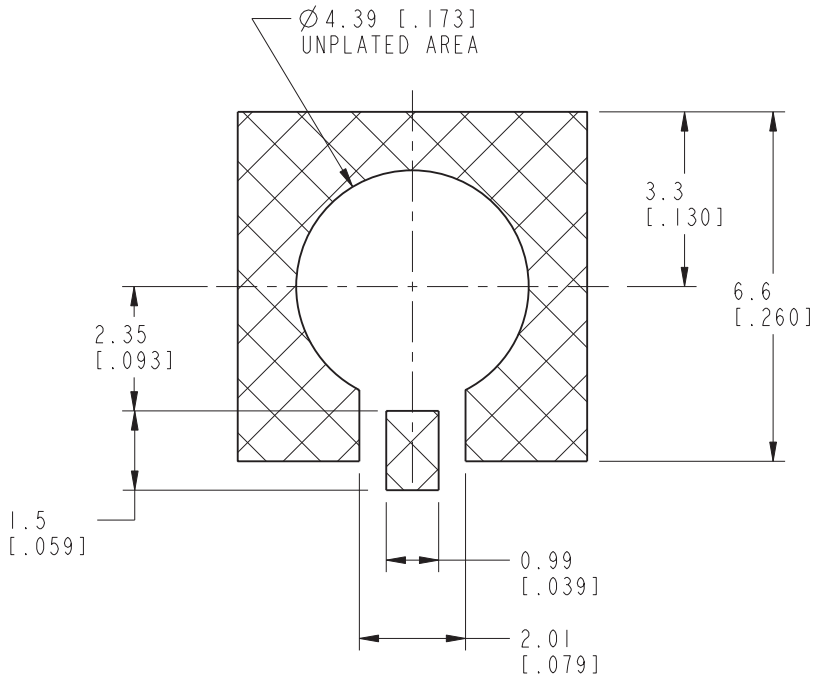
THIRD ANGLE PROJ. 

REVISIONS

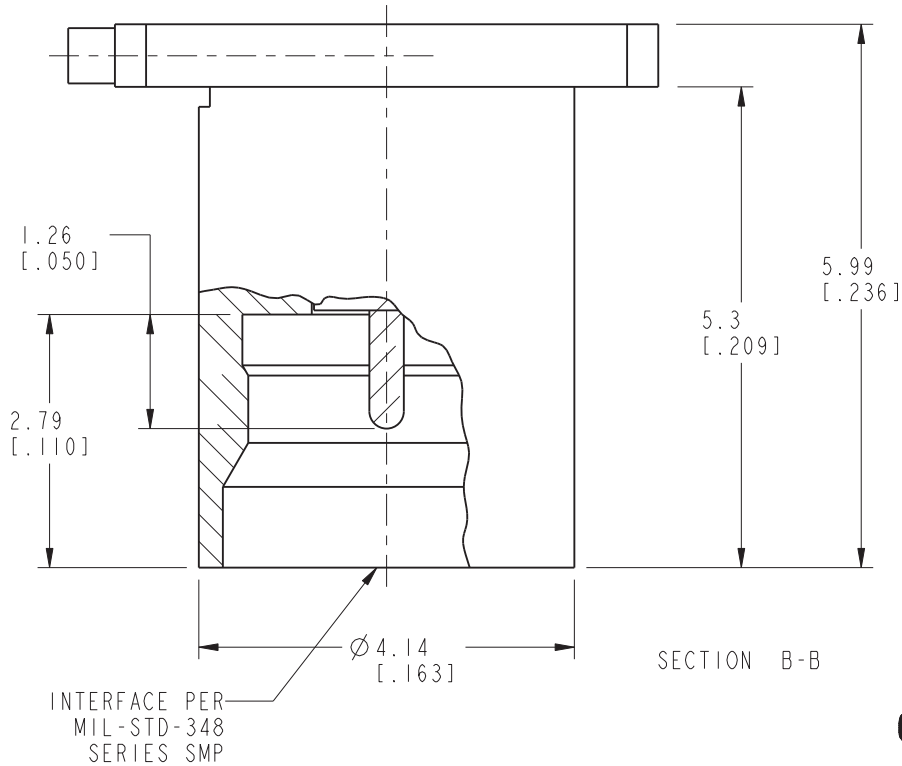
REV	DESCRIPTION	DATE	ECO	APPR
A	RELEASE TO MFG	9/12/05	45722	MY
E	ADDED UL RATING FOR INSULATOR MATERIAL	28-Jul-11	47682	SH



SCALE 6.000



RECOMMENDED PCB PAD LAYOUT  
SCALE 7.000



**CUSTOMER OUTLINE DRAWING**  
**ALL OTHER SHEETS ARE FOR INTERNAL USE ONLY**

UNLESS OTHERWISE SPECIFIED, DIMENSIONS ARE IN METRIC AND TOLERANCES ARE:  
<0.5mm ± 0.05mm 0.5 - 6mm ± 0.1mm 6 - 30mm ± 0.2mm 30 - 120mm ± 0.3mm ANGLES ± 1°

NOTICE - These drawings, specifications, or other data (1) are, and remain the property of Amphenol corp. (2) must be returned upon request; and (3) are confidential and not to be disclosed to any person other than those to whom they are given by Amphenol Corp. the furnishing of these drawings, specifications, or other data by Amphenol Corp., or to any other person to anyone for any purpose is not to be regarded by implication or otherwise in any manner licensing, granting rights to permitting such holder or any other person to manufacture, use or sell any product, process or design, patented or otherwise, that may in any way be related to or disclosed by said drawings, specifications, or other data.

MATERIAL

DRAWN  
T.DENG

DATE  
25-Jul-11

ENGINEER  
OWEN BARTHELMES

DATE  
25-Apr-01

REFERENCE  
GEN# ASSYM2-SMP  
EAR# 283  
615X-1690-100  
CONFIGURATION LEVEL:

APPROVED

DATE

CAD FILE

28-Jul-11

TITLE  
ASSEMBLY,  
PC BOARD, REAR MOUNT  
LIMITED DETENT

SCALE: 12.0:1.0 SHEET 2 OF 2

DWG SIZE  
B

REV  
E

Amphenol RF

www.amphenolrf.com

DRAWING NO. SMP-MSLD-PCR

ITEM NO. SMP-MSLD-PCR

PART NO. SMP-MSLD-PCR