



Chipsmall Limited consists of a professional team with an average of over 10 year of expertise in the distribution of electronic components. Based in Hongkong, we have already established firm and mutual-benefit business relationships with customers from,Europe,America and south Asia,supplying obsolete and hard-to-find components to meet their specific needs.

With the principle of “Quality Parts,Customers Priority,Honest Operation,and Considerate Service”,our business mainly focus on the distribution of electronic components. Line cards we deal with include Microchip,ALPS,ROHM,Xilinx,Pulse,ON,Everlight and Freescale. Main products comprise IC,Modules,Potentiometer,IC Socket,Relay,Connector.Our parts cover such applications as commercial,industrial, and automotives areas.

We are looking forward to setting up business relationship with you and hope to provide you with the best service and solution. Let us make a better world for our industry!



Contact us

Tel: +86-755-8981 8866 Fax: +86-755-8427 6832

Email & Skype: info@chipsmall.com Web: www.chipsmall.com

Address: A1208, Overseas Decoration Building, #122 Zhenhua RD., Futian, Shenzhen, China



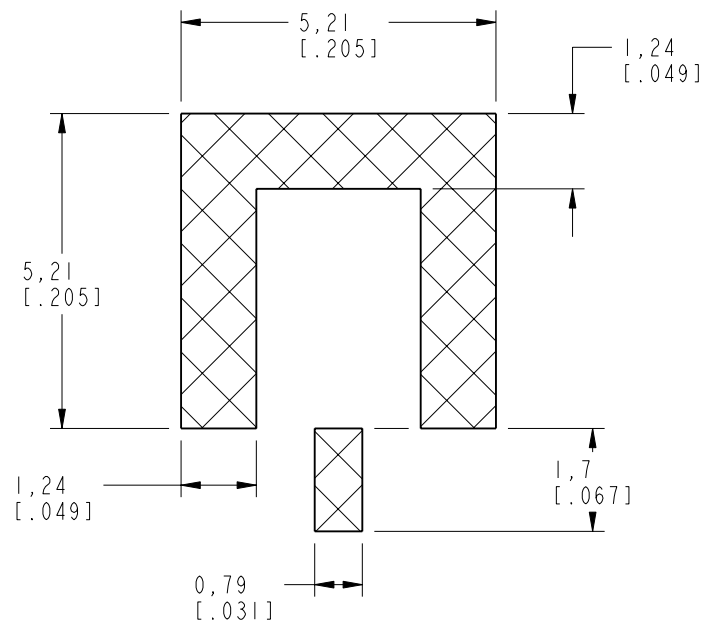
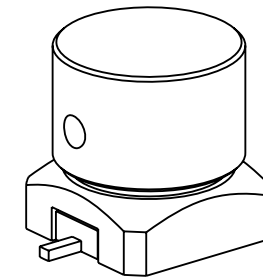
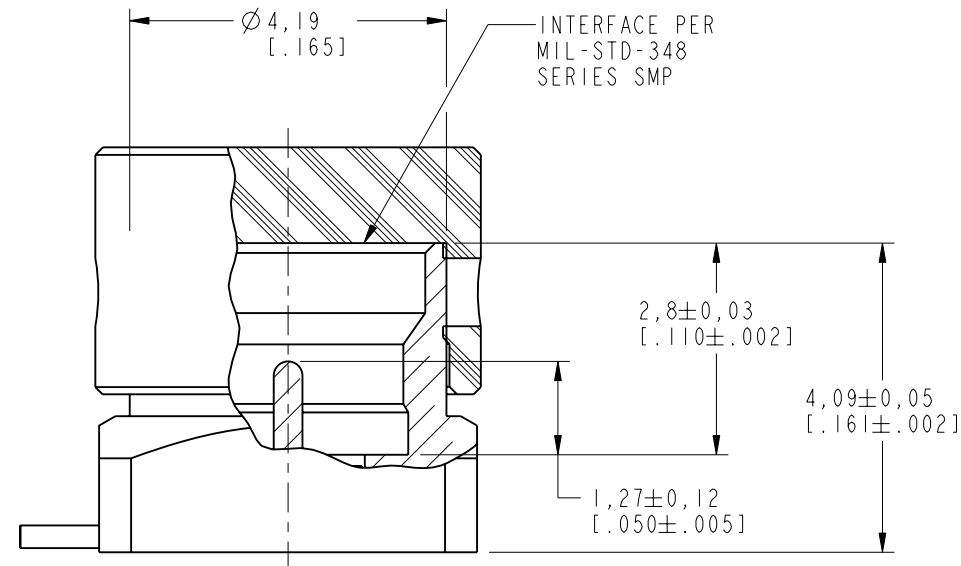
1. MATERIALS AND FINISHES:
BODY - BRASS, GOLD PLATING, .000030 [0.8] THICK OVER NICKEL
CONTACT - BRASS, GOLD PLATING, .000030 [0.8] THICK OVER NICKEL
INSULATOR - LCP
CAP - PTFE
2. ELECTRICAL:
 - A. IMPEDANCE: 50 OHM
 - B. FREQUENCY RANGE: DC - 18 GHz
 - C. VSWR(RETURN LOSS): 1.10 (26.4 dB), MAX. DC-6GHz
1.15 (23.1 dB), MAX. 6-10GHz
1.30 (17.7 dB), MAX. 10-18GHz
 - D. DIELECTRIC WITHSTANDING VOLTAGE: 335 VRMS, MIN.
3. PHYSICAL:
 - A. DURABILITY: 500 CYCLES MIN.
 - B. ENGAGEMENT FORCE: 10 LB [44.5 N] MAX
 - C. DISENGAGEMENT FORCE: 2 LB [8.9 N] MIN
 - D. INNER CONTACT RETENTION FORCE: 1.5 LB [7 N] MIN
 - E. TEMPERATURE RANGE: -65° C TO 165° C
4. PACKAGING:
 - A. PACKAGE CONNECTOR IN TAPE AND REEL.
 - B. MARK TAG:

AMPHENOL RF P/N: SMP-MSLD-PCS-5T
DATE CODE: WWYY
QTY: 1400 PCS

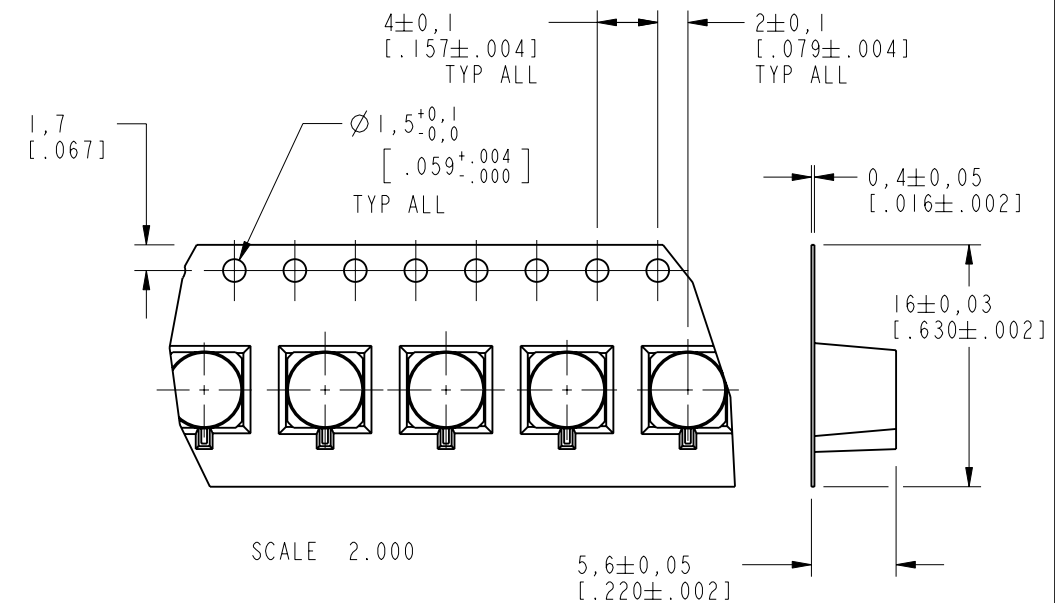
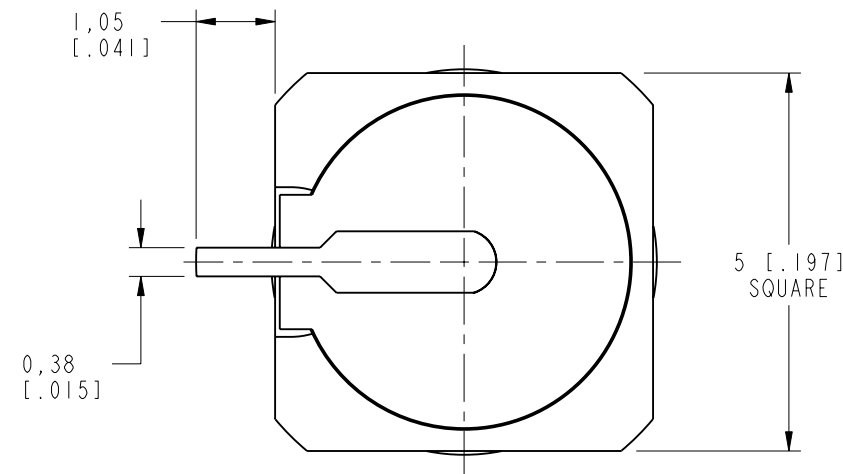
AMPHENOL RF P/N: SMP-MSLD-PCS-5T
DATE CODE: WWYY
QTY: 1400 PCS

REVISIONS

REV	DESCRIPTION	DATE	ECO	APPR
A	RELEASE TO MFG.	24-Mar-14	49925	JTS



RECOMMENDED PCB FOOTPRINT
SCALE 8.000



CUSTOMER OUTLINE DRAWING

ALL OTHER SHEETS ARE FOR INTERNAL USE ONLY

UNLESS OTHERWISE SPECIFIED, DIMENSIONS ARE IN INCHES AND TOLERANCES ARE: 2 PLACE DECIMAL 3 PLACE DECIMAL ANGLES ±.015 (0,381 mm) ±.005 (0,127 mm) ± 1°			MATERIAL - REFERENCE CONFIGURATION LEVEL: <input type="checkbox"/> <input type="checkbox"/> <input type="checkbox"/> FINISH	DRAWN J. CHEN	DATE 24-Mar-14	TITLE SMP JACK LIMITED DETENT SURFACE MOUNT TAPE AND REEL		Amphenol RF www.amphenolrf.com	
NOTICE - These drawings, specifications, or other data (1) are, and remain the property of Amphenol corp. (2) must be returned upon request; and (3) are confidential and not to be disclosed to any person other than those to whom they are given by Amphenol Corp. the furnishing of these drawings, specifications, or other data by Amphenol Corp., or to any other person to anyone for any purpose is not to be regarded by implication or otherwise in any manner licensing, granting rights to permitting such holder or any other person to manufacture, use or sell any product, process or design, patented or otherwise, that may in any way be related to or disclosed by said drawings, specifications, or other data.				ENGINEER T. SMITH	DATE 05-Mar-14				
				APPROVED S. HSIEH	DATE 24-Mar-14	SCALE: 10.0:1.0	SHEET 2 OF 2	DRAWING NO. SMP-MSLD-PCS-5T	
				CAD FILE	DWG SIZE B		REV A	ITEM NO. SMP-MSLD-PCS-5T	
								PART NO. SMP-MSLD-PCS-5T	