



Chipsmall Limited consists of a professional team with an average of over 10 year of expertise in the distribution of electronic components. Based in Hongkong, we have already established firm and mutual-benefit business relationships with customers from,Europe,America and south Asia,supplying obsolete and hard-to-find components to meet their specific needs.

With the principle of “Quality Parts,Customers Priority,Honest Operation,and Considerate Service”,our business mainly focus on the distribution of electronic components. Line cards we deal with include Microchip,ALPS,ROHM,Xilinx,Pulse,ON,Everlight and Freescale. Main products comprise IC,Modules,Potentiometer,IC Socket,Relay,Connector.Our parts cover such applications as commercial,industrial, and automotives areas.

We are looking forward to setting up business relationship with you and hope to provide you with the best service and solution. Let us make a better world for our industry!



## Contact us

Tel: +86-755-8981 8866 Fax: +86-755-8427 6832

Email & Skype: info@chipsmall.com Web: www.chipsmall.com

Address: A1208, Overseas Decoration Building, #122 Zhenhua RD., Futian, Shenzhen, China



## Surface Mount TRANSZORB® Transient Voltage Suppressors

### eSMP® Series


**DO-220AA (SMP)**

**RoHS**  
COMPLIANT  
HALOGEN  
**FREE**

### FEATURES

- Very low profile - typical height of 1.0 mm
- Ideal for automated placement
- Available in uni-directional
- 400 W peak pulse power capability with a 10/1000  $\mu$ s waveform
- Excellent clamping capability
- Very fast response time
- Low incremental surge resistance
- Meets MSL level 1, per J-STD-020, LF maximum peak of 260 °C
- Material categorization: For definitions of compliance please see [www.vishay.com/doc?99912](http://www.vishay.com/doc?99912)

### MECHANICAL DATA

#### Case: DO-220AA (SMP)

Molding compound meets UL 94 V-0 flammability rating  
Base P/N-M3 - halogen-free, RoHS-compliant, and commercial grade

**Terminals:** Matte tin plated leads, solderable per J-STD-002 and JESD 22-B102

M3 suffix meets JESD 201 class 2 whisker test

**Polarity:** Color band denotes cathode end

### PRIMARY CHARACTERISTICS

|                          |                  |
|--------------------------|------------------|
| $V_{BR}$ uni-directional | 4.10 V to 44.2 V |
| $V_{WM}$                 | 3.3 V to 36 V    |
| $P_{PPM}$                | 400 W            |
| $I_{FSM}$                | 40 A             |
| $T_J$ max.               | 150 °C           |
| Polarity                 | Uni-directional  |
| Package                  | DO-220AA (SMP)   |

### TYPICAL APPLICATIONS

Use in sensitive electronics protection against voltage transients induced by inductive load switching and lighting on ICs, MOSFET, signal lines of sensor units for consumer, computer, industrial, and telecommunication.

### MAXIMUM RATINGS ( $T_A = 25$ °C unless otherwise noted)

| PARAMETER   | SYMBOL         | VALUE               | UNIT |
|---|----------------|---------------------|------|
| Peak pulse power dissipation with a 10/1000 $\mu$ s waveform (fig. 1) <sup>(1)(2)</sup> | $P_{PPM}$      | 400                 | W    |
| Peak pulse current with a 10/1000 $\mu$ s waveform <sup>(1)</sup>                       | $I_{PPM}$      | See table next page | A    |
| Peak forward surge current 10 ms single half sine-wave <sup>(2)</sup>                   | $I_{FSM}$      | 40                  | A    |
| Maximum instantaneous forward voltage at 25 A <sup>(3)</sup>                            | $V_F$          | 2.5                 | V    |
| Operating junction and storage temperature range  | $T_J, T_{STG}$ | - 55 to + 150       | °C   |

#### Notes

<sup>(1)</sup> Non-repetitive current pulse, per fig. 3 and derated above  $T_A = 25$  °C per fig. 2

<sup>(2)</sup> Mounted on 0.2" x 0.2" (5.0 mm x 5.0 mm) copper pads to each terminal

<sup>(3)</sup> Pulse test: 300  $\mu$ s pulse width, 1 % duty cycle

**ELECTRICAL CHARACTERISTICS** ( $T_A = 25\text{ }^\circ\text{C}$  unless otherwise noted)

| DEVICE TYPE | DEVICE MARKING CODE | BREAKDOWN VOLTAGE $V_{BR}$ AT $I_T$ <sup>(1)</sup> (V) |      | TEST CURRENT $I_T$ (mA) | STAND-OFF VOLTAGE $V_{WM}$ (V) | MAXIMUM REVERSE LEAKAGE AT $V_{WM}$ $I_D$ ( $\mu\text{A}$ ) <sup>(3)</sup> | MAXIMUM PEAK PULSE SURGE CURRENT $I_{PPM}$ (A) <sup>(2)</sup> | MAXIMUM CLAMPING VOLTAGE AT $I_{PPM}$ $V_C$ (V) |
|-------------|---------------------|--|------|-------------------------|--------------------------------|--|---|---|
|             |                     | MIN.   | MAX. |                         |                                |  |   |   |
| SMP3V3      | AC                  | 4.10   | 5.10 | 1.0                     | 3.3                            | 200  | 54.8  | 7.3   |
| SMP5.0A     | AE                  | 6.40   | 7.07 | 10                      | 5.0                            | 150  | 43.5  | 9.2   |
| SMP6.0A     | AG                  | 6.67   | 7.37 | 10                      | 6.0                            | 600  | 38.8  | 10.3  |
| SMP6.5A     | AK                  | 7.22   | 7.98 | 10                      | 6.5                            | 100  | 35.7  | 11.2  |
| SMP7.0A     | AM                  | 7.78   | 8.60 | 10                      | 7.0                            | 50   | 33.3  | 12.0  |
| SMP7.5A     | AN                  | 8.33   | 9.21 | 1.0                     | 7.5                            | 50   | 31.0  | 12.9  |
| SMP8.0A     | AR                  | 8.89   | 9.83 | 1.0                     | 8.0                            | 20   | 29.4  | 13.6  |
| SMP11A      | AZ                  | 12.2   | 13.5 | 1.0                     | 11                             | 1.0  | 22.0  | 18.2  |
| SMP12A      | BE                  | 13.3   | 14.7 | 1.0                     | 12                             | 1.0  | 20.1  | 19.9  |
| SMP13A      | BG                  | 14.4   | 15.9 | 1.0                     | 13                             | 1.0  | 18.6  | 21.5  |
| SMP14A      | BK                  | 15.6   | 17.2 | 1.0                     | 14                             | 1.0  | 17.2  | 23.2  |
| SMP15A      | BM                  | 16.7   | 18.5 | 1.0                     | 15                             | 1.0  | 16.4  | 24.4  |
| SMP16A      | BP                  | 17.8   | 19.7 | 1.0                     | 16                             | 1.0  | 15.4  | 26.0  |
| SMP17A      | BR                  | 18.9   | 20.9 | 1.0                     | 17                             | 1.0  | 14.5  | 27.6  |
| SMP18A      | BT                  | 20.0   | 22.1 | 1.0                     | 18                             | 1.0  | 13.7  | 29.2  |
| SMP20A      | BV                  | 22.2   | 24.5 | 1.0                     | 20                             | 1.0  | 12.3  | 32.4  |
| SMP22A      | BX                  | 24.4   | 26.9 | 1.0                     | 22                             | 1.0  | 11.3  | 35.5  |
| SMP24A      | BZ                  | 26.7   | 29.5 | 1.0                     | 24                             | 1.0  | 10.3  | 38.9  |
| SMP26A      | CE                  | 28.9   | 31.9 | 1.0                     | 26                             | 1.0  | 9.5   | 42.1  |
| SMP28A      | CG                  | 31.1   | 34.4 | 1.0                     | 28                             | 1.0  | 8.8   | 45.4  |
| SMP30A      | CK                  | 33.3   | 36.8 | 1.0                     | 30                             | 1.0  | 8.3   | 48.4  |
| SMP33A      | CM                  | 36.7   | 40.6 | 1.0                     | 33                             | 1.0  | 7.5   | 53.3  |
| SMP36A      | CP                  | 40.0   | 44.2 | 1.0                     | 36                             | 1.0  | 6.9   | 58.1  |

**Notes**

- (1)  $V_{BR}$  measured after  $I_T$  applied for 300  $\mu\text{s}$ ,  $I_T$  = square wave pulse or equivalent  
(2) Surge current waveform per fig. 3 and derate per fig. 2  
(3) All terms and symbols are consistent with ANSI/IEEE C62.35

**THERMAL CHARACTERISTICS** ( $T_A = 25\text{ }^\circ\text{C}$  unless otherwise noted)

| PARAMETER  | SYMBOL          | LIMIT | UNIT               |
|--|-----------------|-------|--------------------|
| Typical thermal resistance, junction to lead <sup>(1)</sup>    | $R_{\theta JL}$ | 50    | $^\circ\text{C/W}$ |
| Typical thermal resistance, junction to ambient <sup>(2)</sup> | $R_{\theta JA}$ | 250   | $^\circ\text{C/W}$ |

**Notes**

- (1) Mounted on PCB with 5.0 mm x 5.0 mm copper pad areas attached to each terminal  
(2) Mounted on minimum recommended pad layout

**ORDERING INFORMATION** (Example)

| PREFERRED P/N | UNIT WEIGHT (g) | PREFERRED PACKAGE CODE | BASE QUANTITY | DELIVERY MODE                      |
|---------------|-----------------|------------------------|---------------|------------------------------------|
| SMP3V3-M3/84A | 0.024           | 84A                    | 3000          | 7" diameter plastic tape and reel  |
| SMP3V3-M3/85A | 0.024           | 85A                    | 10 000        | 13" diameter plastic tape and reel |
| SMP11A-M3/84A | 0.024           | 84A                    | 3000          | 7" diameter plastic tape and reel  |
| SMP11A-M3/85A | 0.024           | 85A                    | 10 000        | 13" diameter plastic tape and reel |



**RATINGS AND CHARACTERISTICS CURVES**

( $T_A = 25\text{ }^\circ\text{C}$  unless otherwise noted)

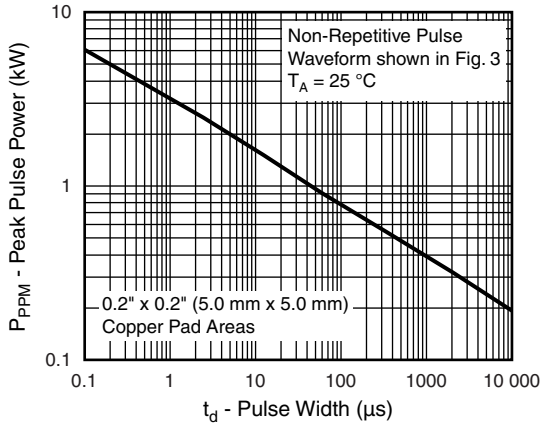


Fig. 1 - Peak Pulse Power Rating Curve

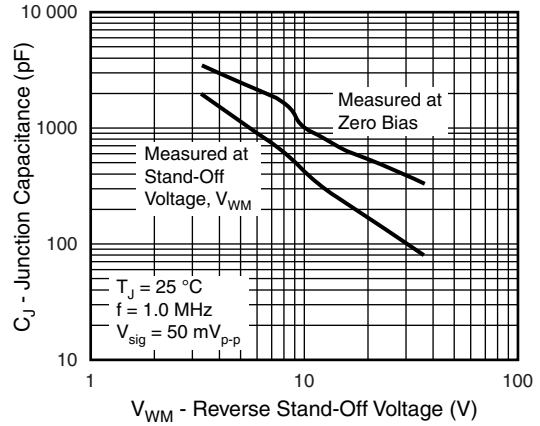


Fig. 4 - Typical Junction Capacitance

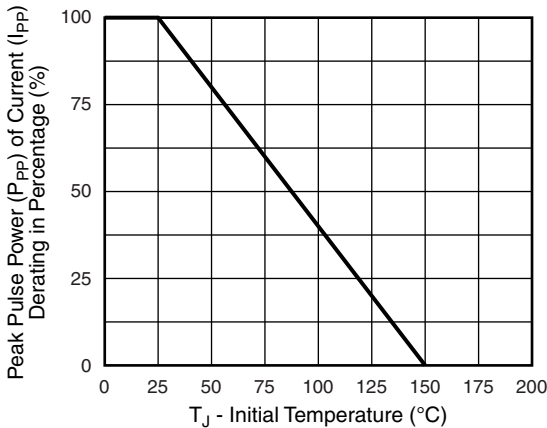


Fig. 2 - Pulse Derating Curve

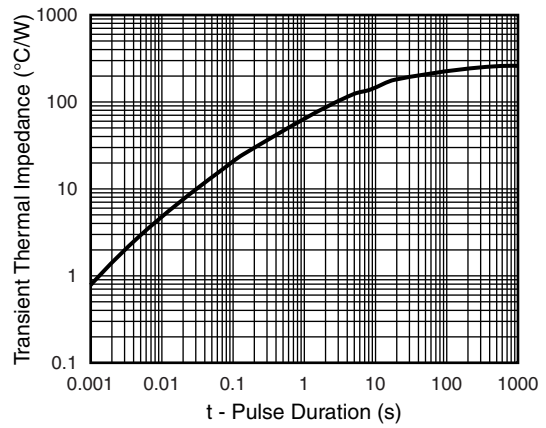


Fig. 5 - Typical Transient Thermal Impedance

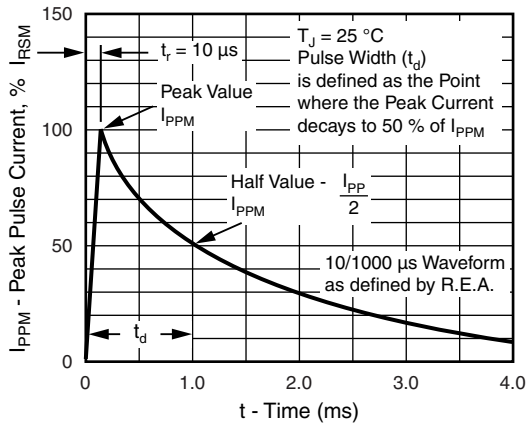
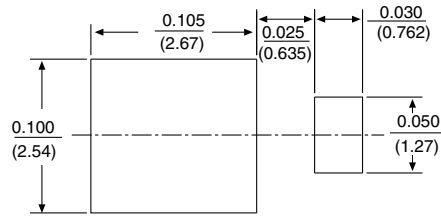
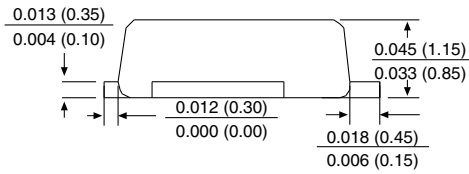
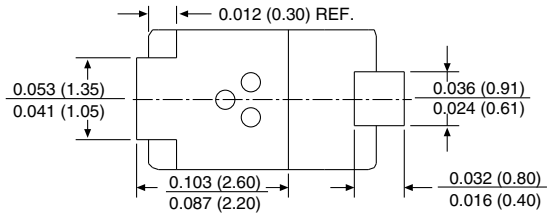
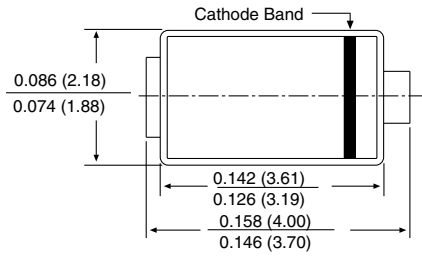


Fig. 3 - Pulse Waveform



### PACKAGE OUTLINE DIMENSIONS in inches (millimeters)

#### DO-220AA (SMP)





## Disclaimer

ALL PRODUCT, PRODUCT SPECIFICATIONS AND DATA ARE SUBJECT TO CHANGE WITHOUT NOTICE TO IMPROVE RELIABILITY, FUNCTION OR DESIGN OR OTHERWISE.

Vishay Intertechnology, Inc., its affiliates, agents, and employees, and all persons acting on its or their behalf (collectively, "Vishay"), disclaim any and all liability for any errors, inaccuracies or incompleteness contained in any datasheet or in any other disclosure relating to any product.

Vishay makes no warranty, representation or guarantee regarding the suitability of the products for any particular purpose or the continuing production of any product. To the maximum extent permitted by applicable law, Vishay disclaims (i) any and all liability arising out of the application or use of any product, (ii) any and all liability, including without limitation special, consequential or incidental damages, and (iii) any and all implied warranties, including warranties of fitness for particular purpose, non-infringement and merchantability.

Statements regarding the suitability of products for certain types of applications are based on Vishay's knowledge of typical requirements that are often placed on Vishay products in generic applications. Such statements are not binding statements about the suitability of products for a particular application. It is the customer's responsibility to validate that a particular product with the properties described in the product specification is suitable for use in a particular application. Parameters provided in datasheets and / or specifications may vary in different applications and performance may vary over time. All operating parameters, including typical parameters, must be validated for each customer application by the customer's technical experts. Product specifications do not expand or otherwise modify Vishay's terms and conditions of purchase, including but not limited to the warranty expressed therein.

Except as expressly indicated in writing, Vishay products are not designed for use in medical, life-saving, or life-sustaining applications or for any other application in which the failure of the Vishay product could result in personal injury or death. Customers using or selling Vishay products not expressly indicated for use in such applications do so at their own risk. Please contact authorized Vishay personnel to obtain written terms and conditions regarding products designed for such applications.

No license, express or implied, by estoppel or otherwise, to any intellectual property rights is granted by this document or by any conduct of Vishay. Product names and markings noted herein may be trademarks of their respective owners.