



Chipsmall Limited consists of a professional team with an average of over 10 year of expertise in the distribution of electronic components. Based in Hongkong, we have already established firm and mutual-benefit business relationships with customers from,Europe,America and south Asia,supplying obsolete and hard-to-find components to meet their specific needs.

With the principle of “Quality Parts,Customers Priority,Honest Operation,and Considerate Service”,our business mainly focus on the distribution of electronic components. Line cards we deal with include Microchip,ALPS,ROHM,Xilinx,Pulse,ON,Everlight and Freescale. Main products comprise IC,Modules,Potentiometer,IC Socket,Relay,Connector.Our parts cover such applications as commercial,industrial, and automotives areas.

We are looking forward to setting up business relationship with you and hope to provide you with the best service and solution. Let us make a better world for our industry!



Contact us

Tel: +86-755-8981 8866 Fax: +86-755-8427 6832

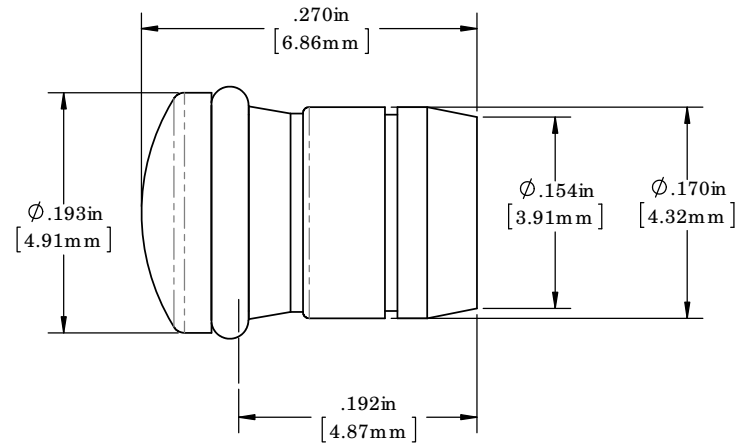
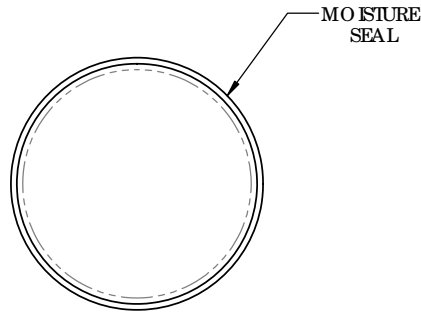
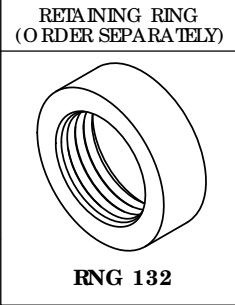
Email & Skype: info@chipsmall.com Web: www.chipsmall.com

Address: A1208, Overseas Decoration Building, #122 Zhenhua RD., Futian, Shenzhen, China



- NOTES:
1. ROHS COMPLIANT
 2. MATERIAL: LENS - POLYCARBONATE, UL 94-V2
 3. MOISTURE SEAL - EPDM
 4. MOUNTING: MOUNTS IN A $\phi .171" \pm .002$ [$\phi 4.34\text{mm} \pm .05$] PANEL HOLE ON $.250"$ [6.35mm] CENTER
 5. PANEL HOLE SHALL BE DEBURRED, BUT NOT CHAMFERED
 6. PANEL THICKNESS: $.031"$ [$.8\text{mm}$] to $.094"$ [2.39mm]
 7. ASSEMBLY:
 - A.) INSERT LENS INTO PANEL HOLE
 - B.) SLIDE RNG 132 RETAINING RING ON BACK OF LENS
 - C.) INSERT LED INTO LENS
 8. U.S. & FOREIGN PATENT ISSUED

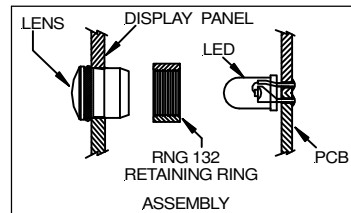
REVISIONS					
ECN #	REV.	DESCRIPTION	DATE	INITIALS	CHKD
353	000	INITIAL RELEASE	2/20/12	KH	AZ



ORDERING CODE : **SMS 172 XXX**

MODEL _____

LENS COLOR	
RTP	RED TRANSPARENT
ATP	AMBER TRANSPARENT
GTP	GREEN TRANSPARENT
BTP	BLUE TRANSPARENT
YTP	YELLOW TRANSPARENT
CTP	CLEAR TRANSPARENT



<small>DIMENSION STYLE: INCHES / MM GENERAL TOLERANCES UNLESS OTHERWISE SPECIFIED</small> <table border="1"> <tr> <th>INCHES</th> <th>MM</th> </tr> <tr> <td>$\pm .020$</td> <td>$\pm .508$</td> </tr> <tr> <td>$\pm .010$</td> <td>$\pm .254$</td> </tr> <tr> <td>$\pm .005$</td> <td>$\pm .127$</td> </tr> </table>		INCHES	MM	$\pm .020$	$\pm .508$	$\pm .010$	$\pm .254$	$\pm .005$	$\pm .127$	APPROVAL DRAWN: KHOWARD CHECKED: AZANELLI DATE: 2/20/12 3/5/12
INCHES	MM									
$\pm .020$	$\pm .508$									
$\pm .010$	$\pm .254$									
$\pm .005$	$\pm .127$									
<small>BREAK ALL CORNERS AND SHARP EDGES 60° MAX</small> THIRD ANGLE PROJECTION PROPRIETARY AND CONFIDENTIAL <small>THE INFORMATION CONTAINED IN THIS DRAWING IS THE SOLE PROPERTY OF VISUAL COMMUNICATIONS COMPANY, INC. ANY REPRODUCTION IN PART OR AS A WHOLE WITHOUT THE WRITTEN PERMISSION OF VISUAL COMMUNICATIONS COMPANY, INC IS PROHIBITED.</small>	MATERIAL: SEE NOTES FINISH: SEE NOTES DO NOT SCALE DRAWING									

12780 DANIELSON CT SUITE A, POWAY, CA 92064 U.S.A
PHONE: (800) 522-5546 EMAIL: vc@vcc.com

TITLE: **3MM FRESNEL LENS W/ MOISTURE SEAL, ROUND LOW PROFILE**

SIZE: B	DWG. NO: SMS 172 XXX	REV: 000
----------------	-----------------------------	-----------------

SCALE: 10:1 SHEET 1 OF 1