



Chipsmall Limited consists of a professional team with an average of over 10 year of expertise in the distribution of electronic components. Based in Hongkong, we have already established firm and mutual-benefit business relationships with customers from,Europe,America and south Asia,supplying obsolete and hard-to-find components to meet their specific needs.

With the principle of “Quality Parts,Customers Priority,Honest Operation,and Considerate Service”,our business mainly focus on the distribution of electronic components. Line cards we deal with include Microchip,ALPS,ROHM,Xilinx,Pulse,ON,Everlight and Freescale. Main products comprise IC,Modules,Potentiometer,IC Socket,Relay,Connector.Our parts cover such applications as commercial,industrial, and automotives areas.

We are looking forward to setting up business relationship with you and hope to provide you with the best service and solution. Let us make a better world for our industry!



## Contact us

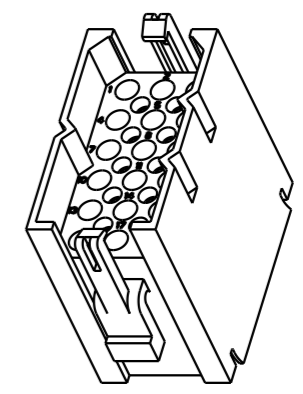
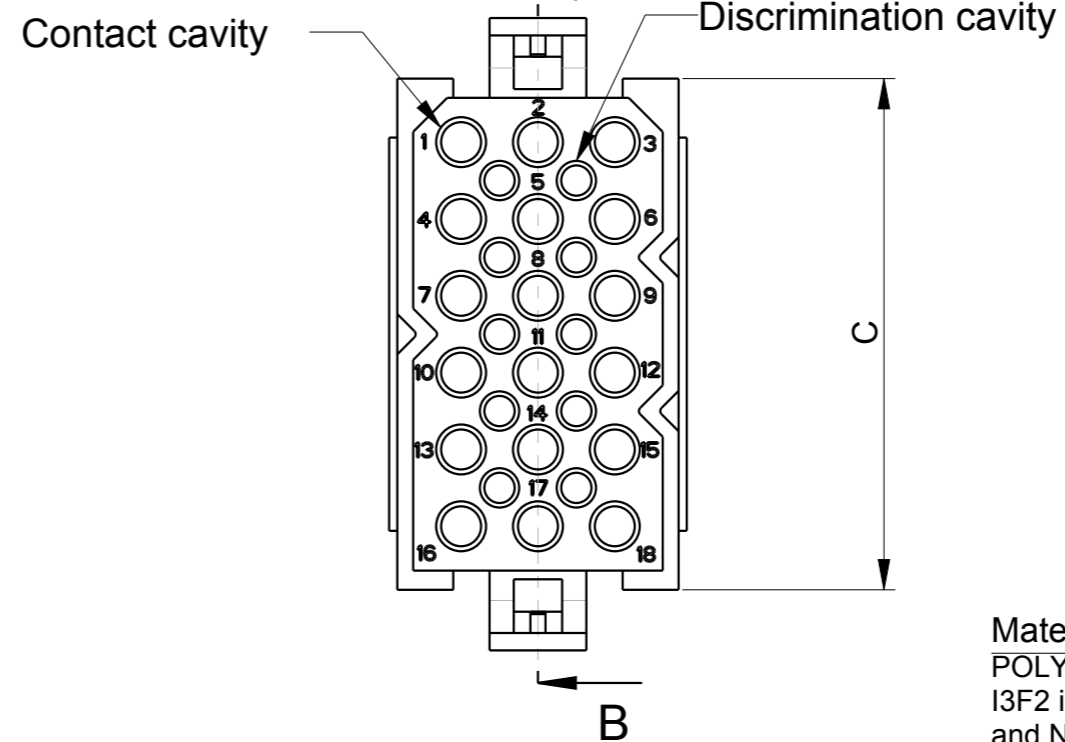
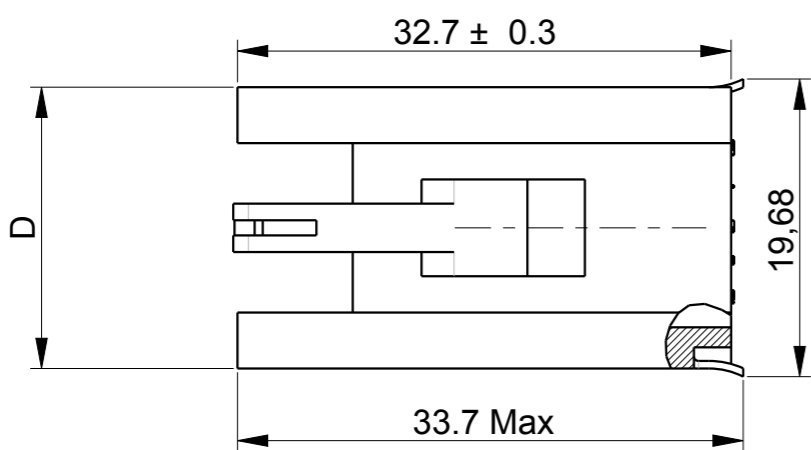
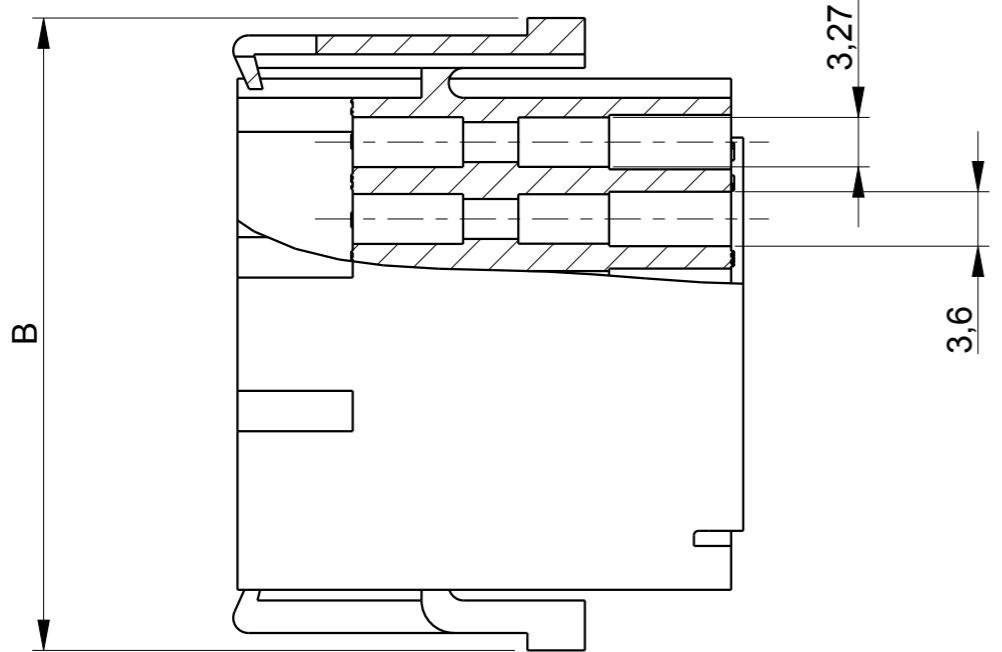
Tel: +86-755-8981 8866 Fax: +86-755-8427 6832

Email & Skype: info@chipsmall.com Web: www.chipsmall.com

Address: A1208, Overseas Decoration Building, #122 Zhenhua RD., Futian, Shenzhen, China



MI : 0 : 1W



**Material :**  
 POLYAMIDE PA 6 / UL94-V0 / COLOUR : GREY  
 I3F2 in accordance with NF F 16101  
 and NF F 16102 standard  
**Performance characteristics :**  
 Operating temperature : -40°C to 105°C  
 Insulation resistance : 5000M Ohm Min.  
 Test potential : 2000 VAC  
 Durability : 500 Cycles

**NOTA :**  
 1- Connector accepts TRIMTRIO formed, machined and subminiature coaxial pin and socket contacts.  
 2- Raised contact marking on both : mating and wiring face.  
 3- Discrimination with pins is guaranteed without loss of contact positions.  
 If discrimination pins are needed : order SMSPE3 per BS.C.201424.003.  
 5- For the configuration of all sizes see drawinf : BS.C.201424.007  
 6- For intermateability with other parts see drawing : BS.C.201424.008

**P/N : SMSXXPD3**

Catalog Number	Quantity of Contact cavities	Quantity of discrimination cavities	Dimensions in mm			
			B±0.5	C±0.3	D±0.3	F
SMS2PD3	2	0	16.4	8.4	14.1	14.9
SMS3PD3	3	0	16.4	8.4	18.6	19.4
SMS4PD3	4	0	16.4	8.4	24	24.8
SMS6PD3	6	2	21.5	13.7	19.1	19.9
SMS9PD3	9	4	26.7	18.5	18.6	19.4
SMS12PD3	12	6	31.7	23.9	18.6	19.4
SMS15PD3	15	8	36.7	29	18.6	19.4
SMS18PD3	18	10	41.8	34.1	18.9	19.4
SMS24PD3	24	15	41.8	34.1	24	24.8
SMS36PD3	36	24	31.7	23.9	49.4	50.2

C	22/04/14	Update drawing ; add detail and F dimension		--
ISS	DATE	Latest modification - by: ROUILLARD		MOD N°
Designed by: <b>ROUILLARD</b>		Date: 28/03/08		<b>CUSTOMER DRAWING</b>
TITLE		QIKMATE PLUG WITHOUT MOULDED-ON HOOD AND DISC.CAV SMS CONNECTOR		
Scale	2/1	General linear Tolerances: ± 0.2	NPRDS / PROJECT TRIMTRIO	
<b>SOURIAU</b>		<b>WWW.SOURIAU.COM</b>		This document is the property of SOURIAU It must not be reproduced or communicated without permission
FORMAT	<b>A3</b>	SOURIAU DRG N° <b>BSC201424016</b>		SHEET 1/1

NOT EXPORT CONTROLLED