



Chipsmall Limited consists of a professional team with an average of over 10 year of expertise in the distribution of electronic components. Based in Hongkong, we have already established firm and mutual-benefit business relationships with customers from,Europe,America and south Asia,supplying obsolete and hard-to-find components to meet their specific needs.

With the principle of “Quality Parts,Customers Priority,Honest Operation,and Considerate Service”,our business mainly focus on the distribution of electronic components. Line cards we deal with include Microchip,ALPS,ROHM,Xilinx,Pulse,ON,Everlight and Freescale. Main products comprise IC,Modules,Potentiometer,IC Socket,Relay,Connector.Our parts cover such applications as commercial,industrial, and automotives areas.

We are looking forward to setting up business relationship with you and hope to provide you with the best service and solution. Let us make a better world for our industry!



Contact us

Tel: +86-755-8981 8866 Fax: +86-755-8427 6832

Email & Skype: info@chipsmall.com Web: www.chipsmall.com

Address: A1208, Overseas Decoration Building, #122 Zhenhua RD., Futian, Shenzhen, China



SMT1

Surface Mount Tactile Switches

Washable



RoHS Compliant



■ Features

1. Compatible With Lead-Free, Reflow Soldering

Heat-resistance resin for lead-free soldering.

2. Washable

3. 180° Symmetric Terminal Pin Layout.

4. Anti-Static Electricity

Ground terminal is provided to prevent damage to element caused by static electricity.

5. Metal contact for sharp tactile feel.

■ Specifications

Contact plating		Silver plated	Gold plated
Rating	Max.	1VA Max. (50mA max.48VDC max.)	
	Min.	0.5mA 20mVDC	10μA 20mVDC
Initial contact resistance		100mΩ Max. {1.5mA 200μVAC at 1.96N [200gf] force}	
Dielectric strength		250VAC 1 minute	
Insulation resistance		100MΩ min.	(100VDC)
Electrical life		1000,000 operations	
Stroke		0.5±0.3 mm	
Operating force		1.96±0.98N	
Operating temperature range		-25~+70°C	
Storage temperature range		-40~+70°C	

■ Part Numbering

SMT G 1 - 01 E - Z

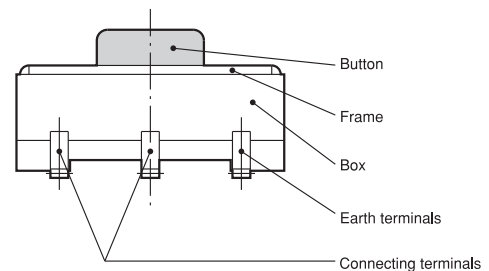
Series code Contact plating Structure Registration No. Packaging specifications

None	Silver plated
G	Gold plated

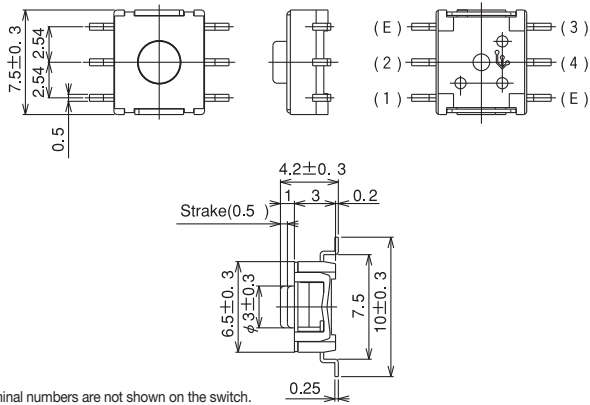
Packaging specifications

None	Stick
E	Emboss taping

■ Structure



SPST



Part No.	Switching function		Circuit diagrams
	OFF	Push (ON)	
SMT1-01-Z SMTG1-01-Z	OFF	(ON)	
Connecting terminals	—	(2) — (1) (3) — (4)	

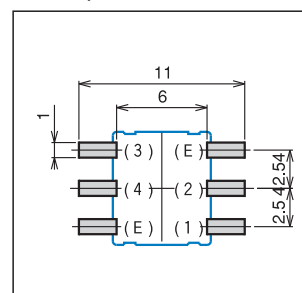
(ON) : Momentary

Table of Part Numbers

Contact plating	Part No.
Silver plated	SMT1-01-Z SMT1-01E-Z
Gold plated	SMTG1-01-Z SMTG1-01E-Z

Pad Layouts

(Top view)



Terminal (E) to be connected to Ground. Terminal (E) is connected to the metal frame.

Soldering Specifications

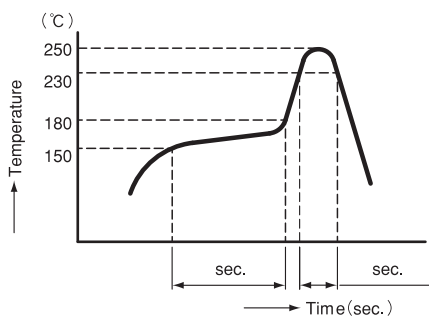
(1) Manual Soldering

Device : Soldering iron

① 380°C ±10°C; 3±0.5 seconds

(2) Reflow Soldering

Device : Inline or batch system



Apply reflow soldering only once

Flux Cleaning Refer to P. 229.

Packaging Specifications

Stick specification	Emboss taping specification

Minimum packaging quantity for reel packaging is 1,000pcs per reel.