



Chipsmall Limited consists of a professional team with an average of over 10 year of expertise in the distribution of electronic components. Based in Hongkong, we have already established firm and mutual-benefit business relationships with customers from,Europe,America and south Asia,supplying obsolete and hard-to-find components to meet their specific needs.

With the principle of "Quality Parts,Customers Priority,Honest Operation,and Considerate Service",our business mainly focus on the distribution of electronic components. Line cards we deal with include Microchip,ALPS,ROHM,Xilinx,Pulse,ON,Everlight and Freescale. Main products comprise IC,Modules,Potentiometer,IC Socket,Relay,Connector.Our parts cover such applications as commercial,industrial, and automotives areas.

We are looking forward to setting up business relationship with you and hope to provide you with the best service and solution. Let us make a better world for our industry!



## Contact us

Tel: +86-755-8981 8866 Fax: +86-755-8427 6832

Email & Skype: info@chipsmall.com Web: www.chipsmall.com

Address: A1208, Overseas Decoration Building, #122 Zhenhua RD., Futian, Shenzhen, China

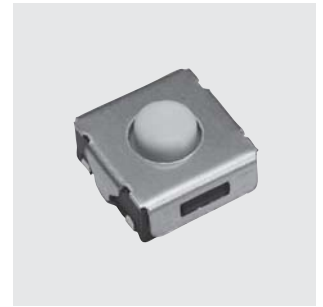


# SMT3/SMTE3

## Surface Mount Tactile Switches

Washable

RoHS Compliant



### ■ Features

- 1. Compatible With Lead-Free, Reflow Soldering**  
Heat-resistance resin for lead-free soldering.
- 2. Washable (SMTE3 Series)**
- 3. J-Lead Terminal Pins For High-Density Mounting**
- 4. Anti-Static Electricity (SMTE3 Series)**  
Ground terminal is provided to prevent damage to element caused by static electricity.

### ■ Specifications

Rating	Max.	0.6VA max. (24VDC max. 30mA max.)	
	Min.	Silver plated contacts	1mA DC5V
		Gold plated contacts	10μA DC5V
Initial contact resistance	100m Ω max. (1.5mA 200μVAC)		
Dielectric strength	250VAC 1 minute		
Insulation resistance	100M Ω min. (100VDC)		
Electrostatic capacity	5pF max.		
Electrical life	100,000 operations		
Stroke	<b>SMT3</b>	0.25mm	
	<b>SMTE3</b>	0.5mm	
Operating force	<b>SMT3</b>	1.18±0.39 N	
	<b>SMTE3</b>	1.96±0.98 N	
Operating temperature range	-25~+70°C		
Storage temperature range	-40~+85°C		

### ■ Part Numbering

**SMT E G 3 - 01 E - Z**

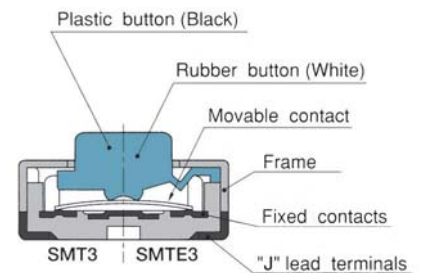
Series code    Structure    Contact plating    Series No.    Registration No.    Packaging specs.

None	Standard type (Plastic button)
<b>E</b>	Immersion washable (Rubber button)

None	Silver plated
<b>G</b>	Gold plated

None	Stick
<b>E</b>	Emboss taping

### ■ Structure



### ■ Table of Part Numbers

Structure	Packaging specifications	
	Stick	Emboss taping
Standard type	<b>SMT3-01-Z</b>	<b>SMT3-01E-Z</b> ★ <b>SMTG3-01E-Z</b>
Immersion washable	<b>SMTE3-01-Z</b> ★ <b>SMTEG3-01-Z</b>	<b>SMTE3-01E-Z</b> ★ <b>SMTEG3-01E-Z</b>

### ■ Pad Layouts

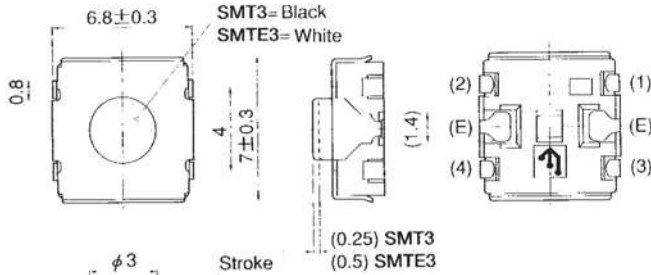
(Top view)

Ground terminals	Without	With
Part No.	<b>SMT3 · SMTE3</b> <b>SMTG3 · SMTEG3</b>	<b>SMTE3</b> <b>SMTEG3</b>
Pattern dimensions		

# SMT3

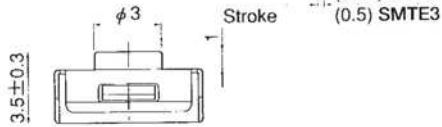
## SPST

### SMT3



### SMTE3

Washable



Terminal numbers are not shown on the switch.

Part No.	Switching function	
SMT3-01-Z SMT3-01E-Z SMTEG3-01E-Z SMTE3-01-Z SMTE3-01E-Z SMTEG3-01-Z SMTEG3-01E-Z	OFF	(ON)
Connecting terminals	—	1 — 3 2 — 4
Circuit diagrams		

(ON) : Momentary

(E) : GGround terminal (SMTE3 and SMTEG3 series)

## Soldering Specifications

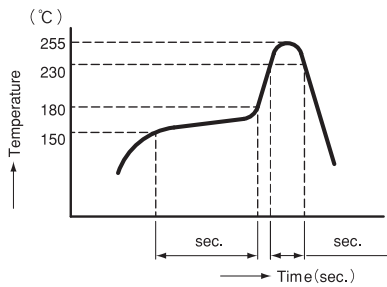
### (1) Manual Soldering

Device : Soldering iron

① 350°C ± 10°C; 3 ± 0.5 seconds

### (2) Reflow Soldering

Device : Inline or batch system



Apply reflow soldering up to 2 times max.

## Flux Cleaning

Since the SMT3 series is not process sealed, be sure to use low-residue flux.

### (1) Solvent: Fluorine or Alcohol type

Cleaning with other solvents or water is not possible.

### (2) Cleaning after soldering should be done after the terminal temperature falls to 90°C or below, or after leaving the switch for five minutes or longer at room temperature.

Cleaning temperature: 43°C, max.

### (3) Do not use ultrasonic cleaning.

## Packaging Specifications

Stick	Emboss taping
50 pcs/stick	1,000 pcs/reel
φ=375	

● When ordering, tape packaged version shall be supplied by request. Minimum packaging quantity for reel packaging is 1,000pcs per reel.

(ON) : Momentary