



Chipsmall Limited consists of a professional team with an average of over 10 year of expertise in the distribution of electronic components. Based in Hongkong, we have already established firm and mutual-benefit business relationships with customers from,Europe,America and south Asia,supplying obsolete and hard-to-find components to meet their specific needs.

With the principle of "Quality Parts,Customers Priority,Honest Operation,and Considerate Service",our business mainly focus on the distribution of electronic components. Line cards we deal with include Microchip,ALPS,ROHM,Xilinx,Pulse,ON,Everlight and Freescale. Main products comprise IC,Modules,Potentiometer,IC Socket,Relay,Connector.Our parts cover such applications as commercial,industrial, and automotives areas.

We are looking forward to setting up business relationship with you and hope to provide you with the best service and solution. Let us make a better world for our industry!



Contact us

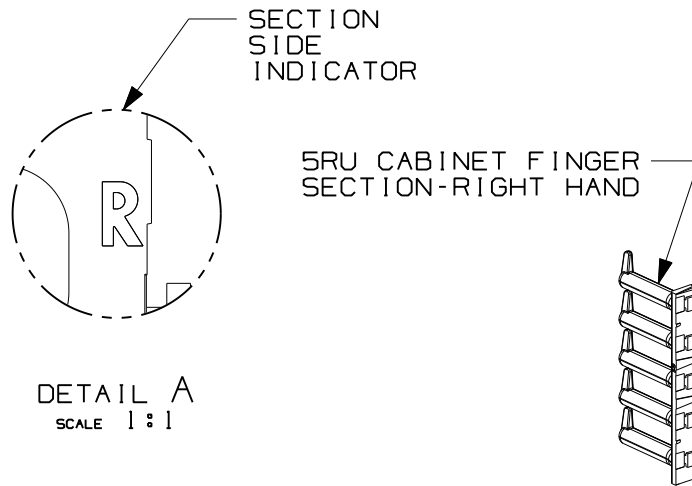
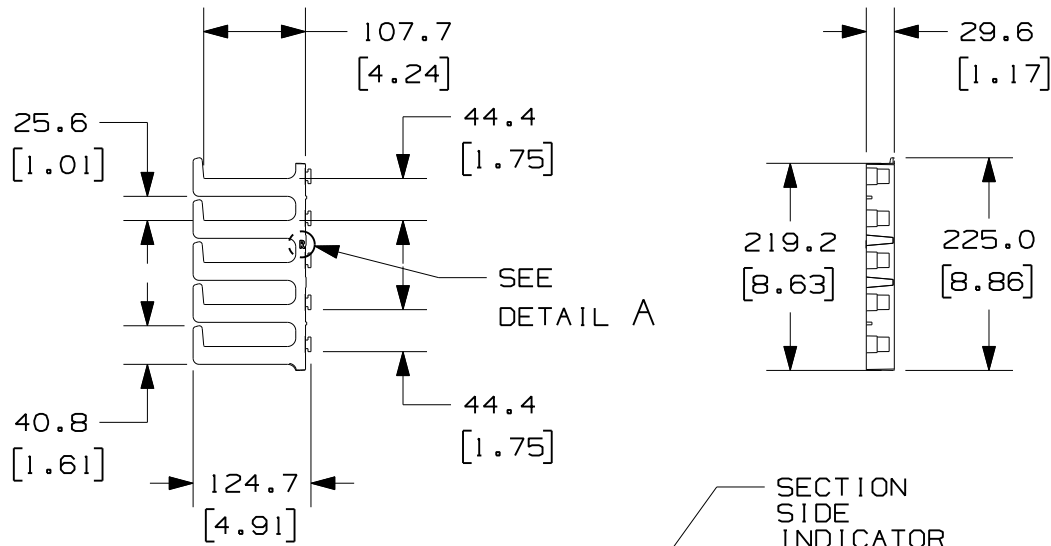
Tel: +86-755-8981 8866 Fax: +86-755-8427 6832

Email & Skype: info@chipsmall.com Web: www.chipsmall.com

Address: A1208, Overseas Decoration Building, #122 Zhenhua RD., Futian, Shenzhen, China



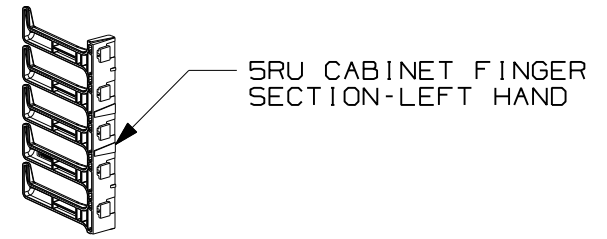
THIS COPY IS PROVIDED ON A RESTRICTED BASIS AND IS NOT TO BE USED IN ANY WAY DETRIMENTAL TO THE INTERESTS OF PANDUIT CORP.



PANDUIT P/N	WEIGHT
SN15F	2.6 Kg/EACH 5.7 LBS/EACH

NOTES:

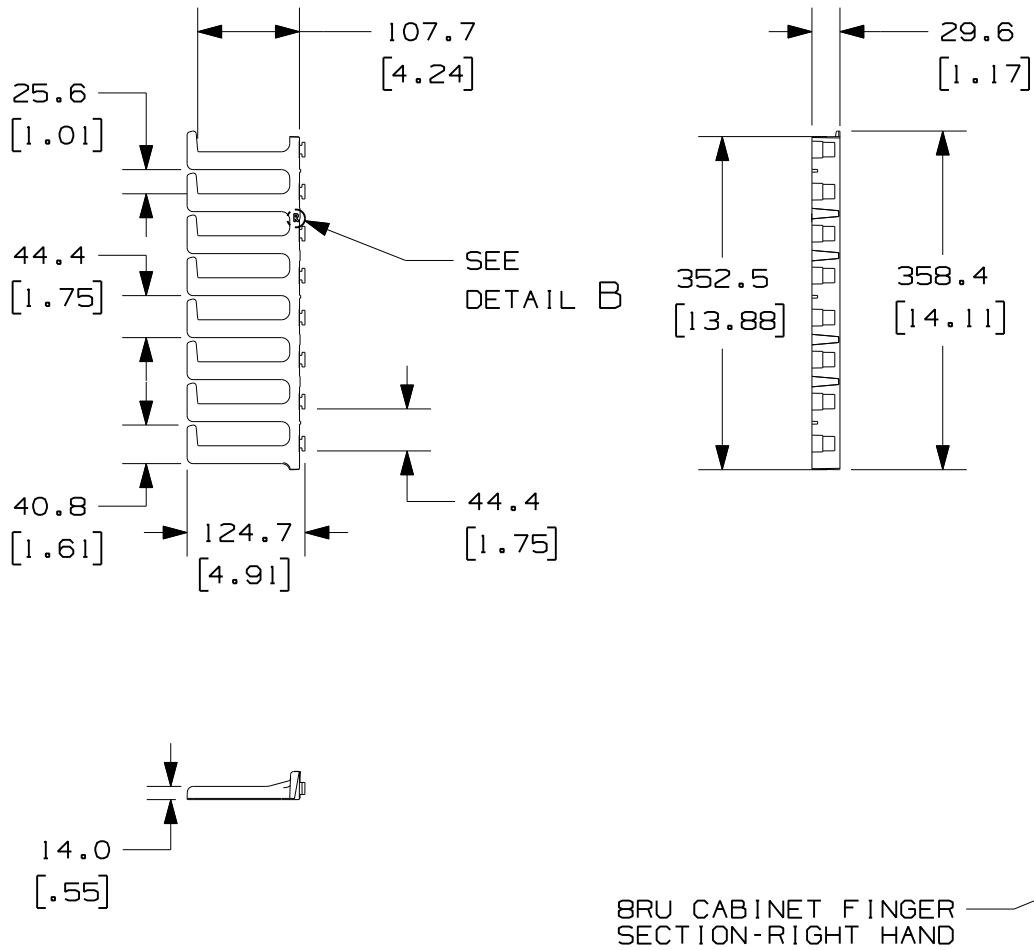
- VISIT OUR ON-LINE CATALOG AT WWW.PANDUIT.COM FOR A LIST OF CURRENT PARTS APPLICABLE FOR USE WITH THIS PRODUCT.
- DIMENSIONS IN PARENTHESES ARE ENGLISH (in).
- PARTS SUPPLIED:
 (4) - 5RU RIGHT HAND SHORT FINGER SECTIONS
 (4) - 5RU LEFT HAND SHORT FINGER SECTIONS
 (3) - 8RU RIGHT HAND SHORT FINGER SECTIONS
 (3) - 8RU LEFT HAND SHORT FINGER SECTIONS



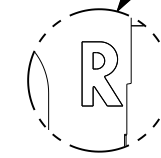
REV	DATE	BY	CHK	APR	DESCRIPTION	ECN
00A	12-21-12	TWV	BRAP	PBD	RELEASED TO PRODUCTION	12V343DN

TITLE		SN15F FINISHED GOOD	
CUSTOMER DRAWING			
ITEM REVISION NAME		12V343DN/00.PRT	
DATASET FILE NAME		12V343DN_DC/00A.PRT	
UNLESS OTHERWISE SPECIFIED, DIMENSIONAL TOLERANCES ARE:		MATERIAL/COLOR:	
INCHES	METRIC - MILLIMETER	N/A	
X.X +/- 0.03	X +/- 0.8		
X.XX +/- 0.018	X.X +/- 0.46		
X.XXX +/- 0.007	X.XX +/- 0.18		
THIRD ANGLE PROJECTION		DRAWING NUMBER:	
DRAWN BY: TWV		12V343DN-DC	
DATE: 12-21-12		SHT 1 OF 2	
CHK: BRAP		SCALE: NONE	
SIZE: A			

THIS COPY IS PROVIDED ON A RESTRICTED BASIS AND IS NOT TO BE USED IN ANY WAY DETRIMENTAL TO THE INTERESTS OF PANDUIT CORP.

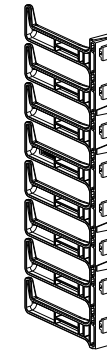


SECTION SIDE INDICATOR



DETAIL B
SCALE 1:1

BRU CABINET FINGER SECTION-LEFT HAND



BRU CABINET FINGER SECTION-RIGHT HAND



00A	12-21-12	TWV	GRAP	PBD	SEE SHEET 1 OF 2 FOR REVISIONS	12V343DN
REV	DATE	BY	CHK	APR	DESCRIPTION	ECN

TITLE				SN15F FINISHED GOOD			
CUSTOMER DRAWING							
ITEM REVISION NAME				12V343DN/00.PRT			
DATASET FILE NAME				12V343DN_DC/00A.PRT			
UNLESS OTHERWISE SPECIFIED, DIMENSIONAL TOLERANCES ARE:				MATERIAL/COLOR:			
INCHES		METRIC - MILLIMETER		ANGLE		N/A	
X.X	+/- 0.03	X.	+/- 0.8				
X.XX	+/- 0.018	X.X	+/- 0.46				
X.XXX	+/- 0.007	X.XX	+/- 0.18				
DRAWING NUMBER:				12V343DN-DC			
DRAWN BY		DATE		CHK		SCALE	
TWV		12-21-12		GRAP		NONE	
SHT 2 OF 2				SIZE			
				A			