



Chipsmall Limited consists of a professional team with an average of over 10 year of expertise in the distribution of electronic components. Based in Hongkong, we have already established firm and mutual-benefit business relationships with customers from,Europe,America and south Asia,supplying obsolete and hard-to-find components to meet their specific needs.

With the principle of “Quality Parts,Customers Priority,Honest Operation,and Considerate Service”,our business mainly focus on the distribution of electronic components. Line cards we deal with include Microchip,ALPS,ROHM,Xilinx,Pulse,ON,Everlight and Freescale. Main products comprise IC,Modules,Potentiometer,IC Socket,Relay,Connector.Our parts cover such applications as commercial,industrial, and automotives areas.

We are looking forward to setting up business relationship with you and hope to provide you with the best service and solution. Let us make a better world for our industry!



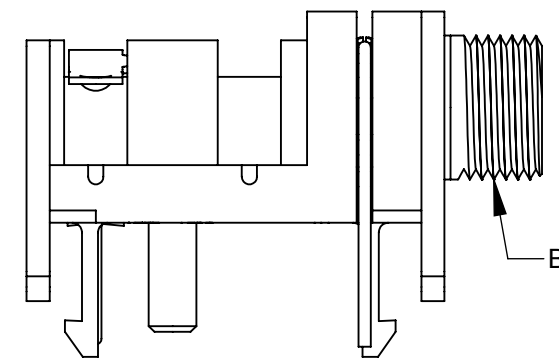
Contact us

Tel: +86-755-8981 8866 Fax: +86-755-8427 6832

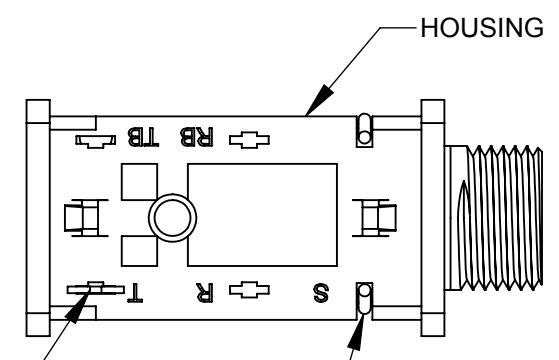
Email & Skype: info@chipsmall.com Web: www.chipsmall.com

Address: A1208, Overseas Decoration Building, #122 Zhenhua RD., Futian, Shenzhen, China



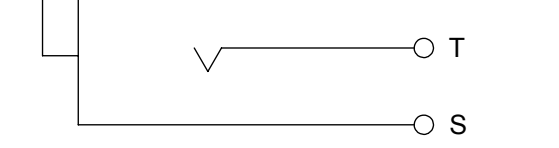


BUSHING



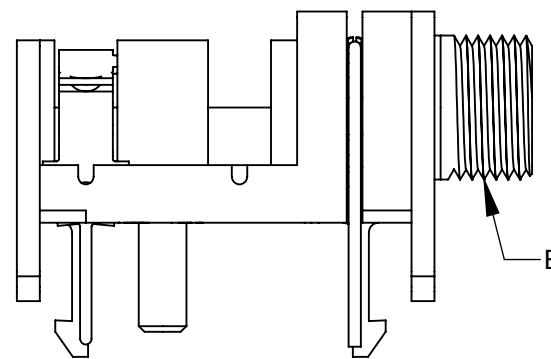
HOUSING

TIP SPRING
SLEEVE SPRING

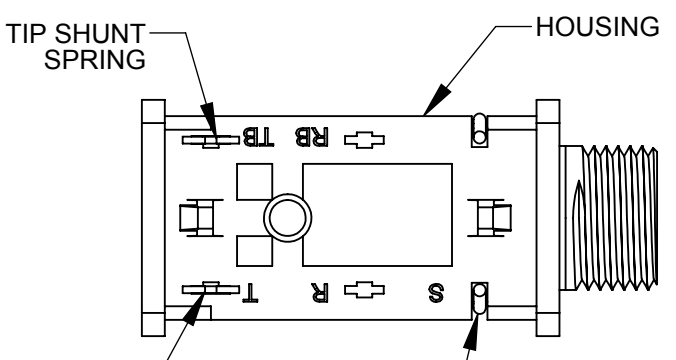


2 CONDUCTOR SINGLE OPEN CIRCUIT

SN49C11

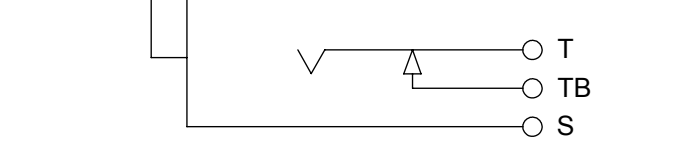


BUSHING



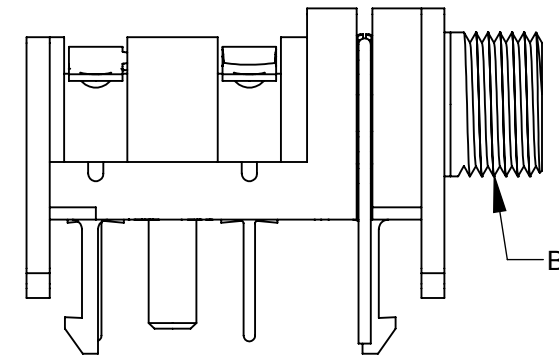
TIP SHUNT SPRING
HOUSING

TIP SPRING
SLEEVE SPRING

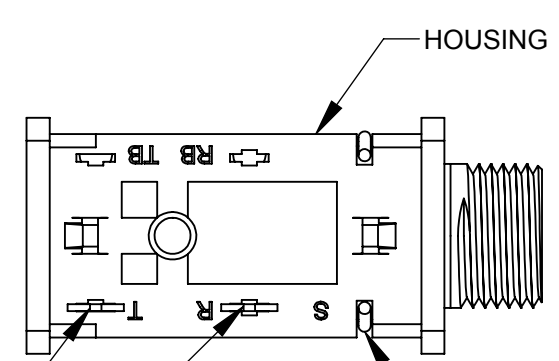


2 CONDUCTOR SINGLE CLOSED CIRCUIT

SN49C12A

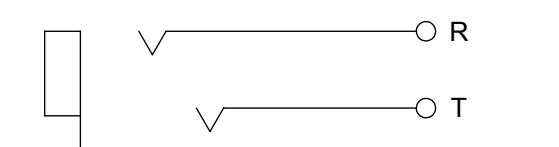


BUSHING



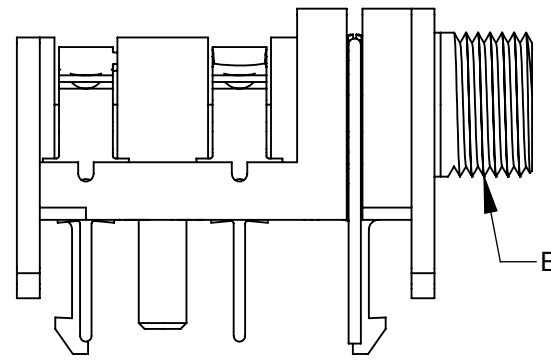
HOUSING

TIP SPRING
RING SPRING
SLEEVE SPRING

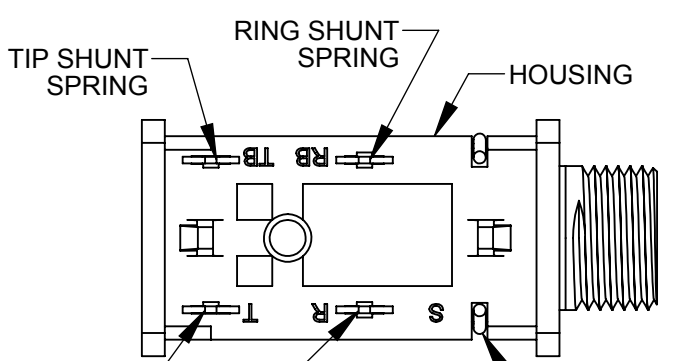


3 CONDUCTOR DOUBLE OPEN CIRCUIT

SN49C12B

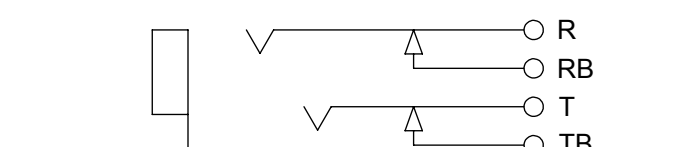


BUSHING



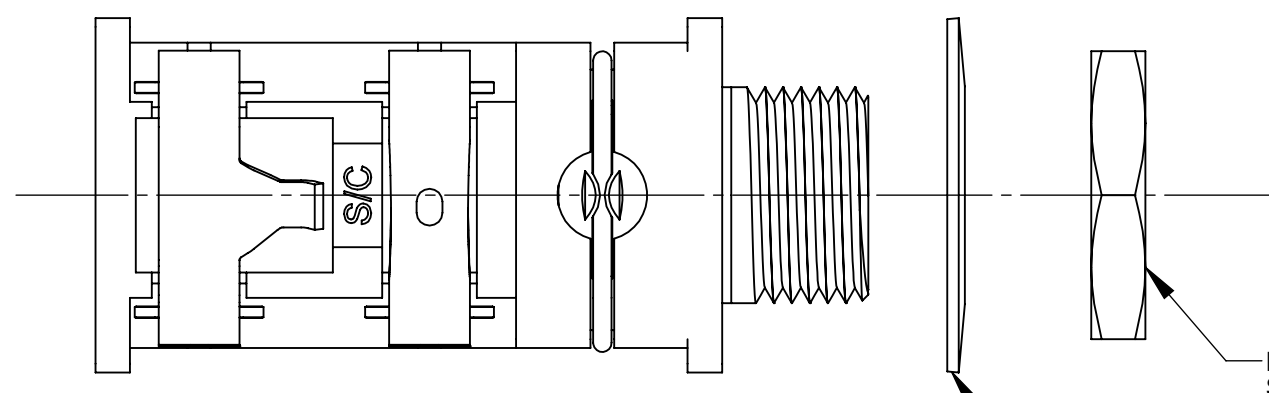
TIP SHUNT SPRING
RING SHUNT SPRING
HOUSING

TIP SPRING
RING SPRING
SLEEVE SPRING



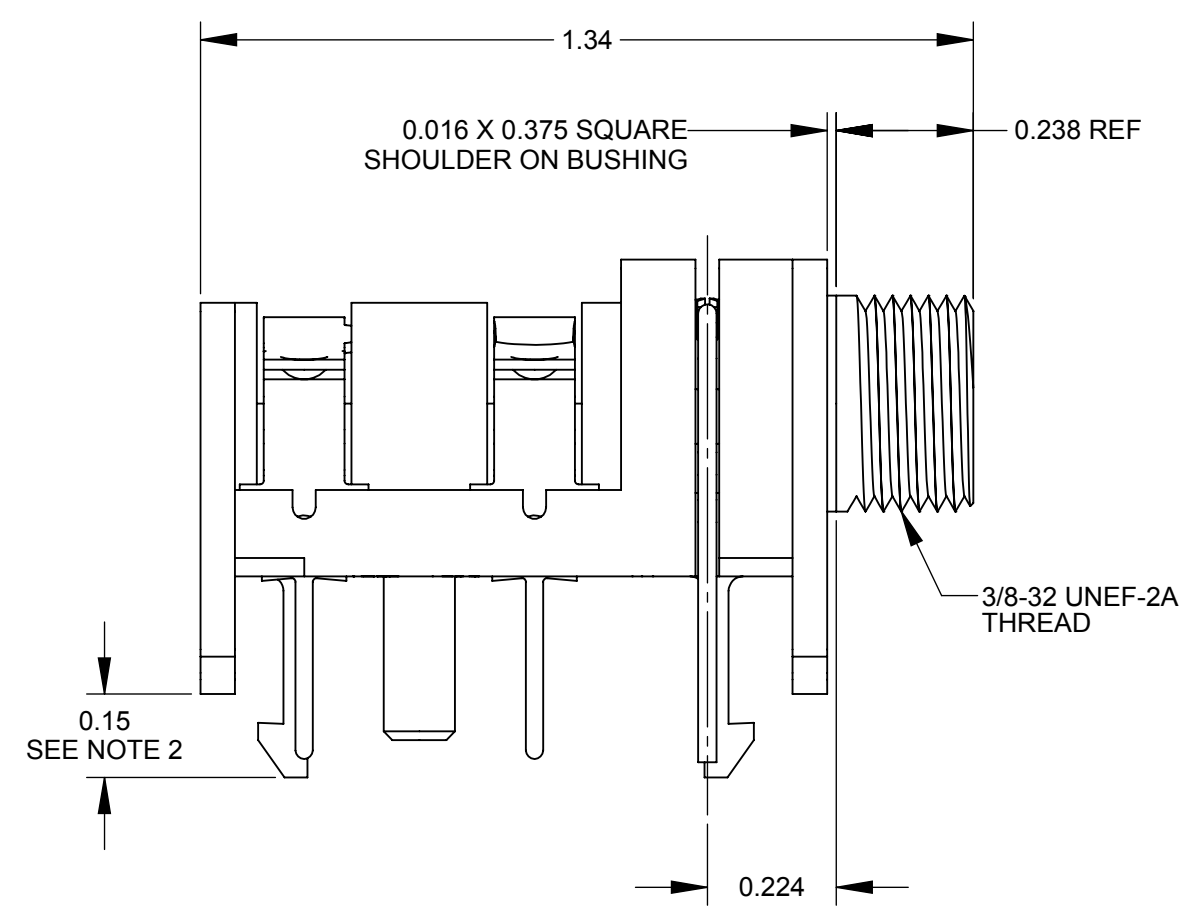
3 CONDUCTOR DOUBLE CLOSED CIRCUIT

SN49C14B



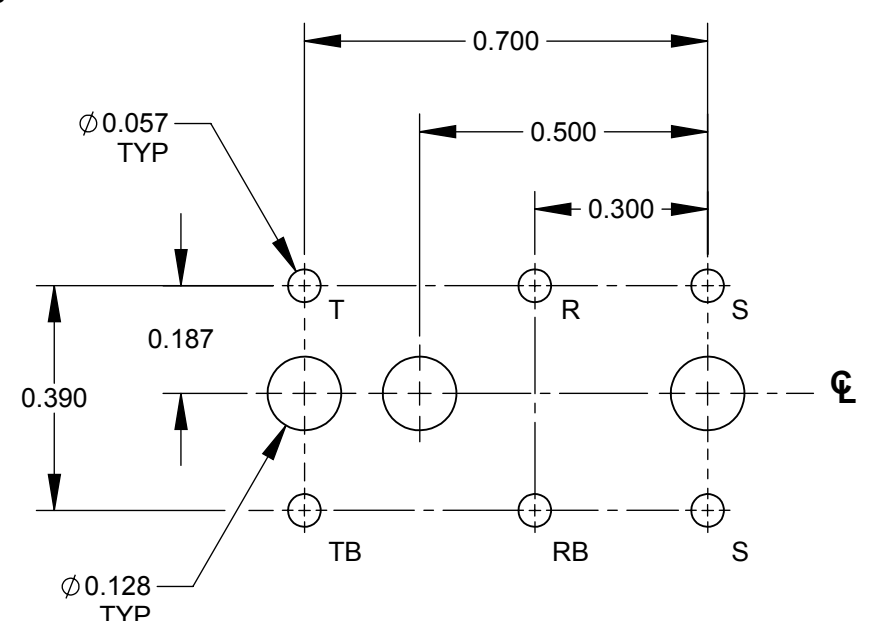
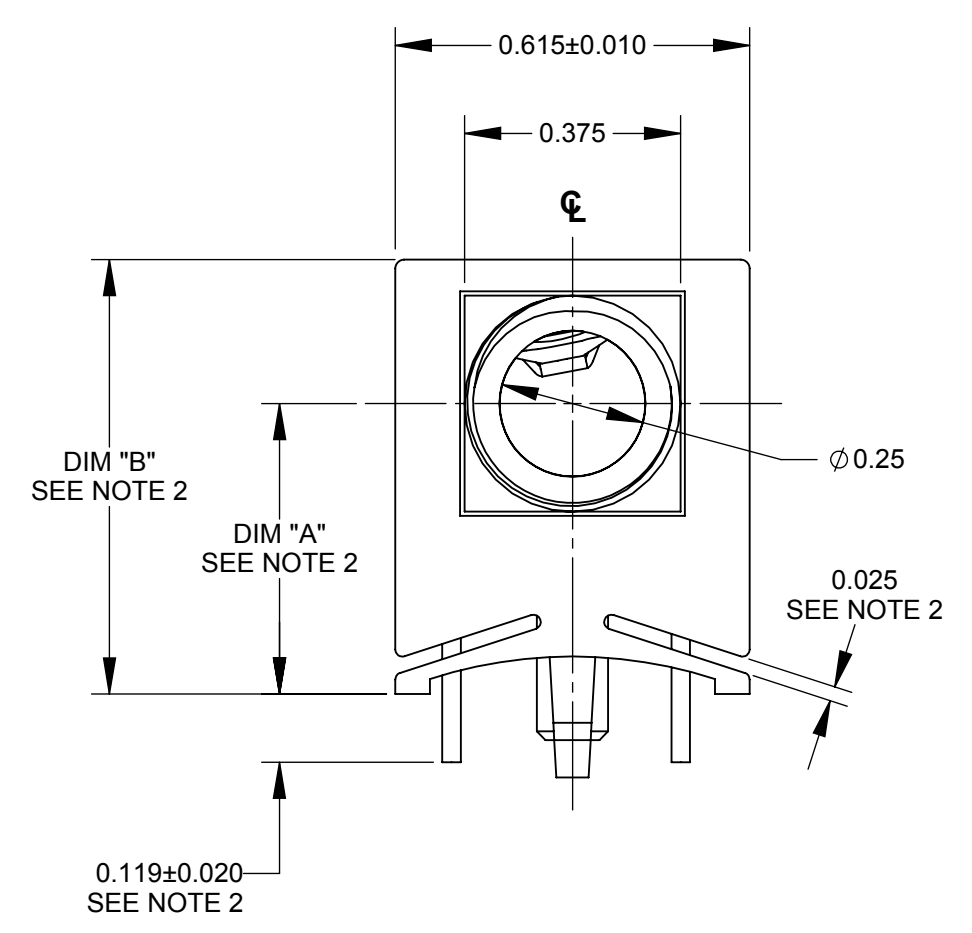
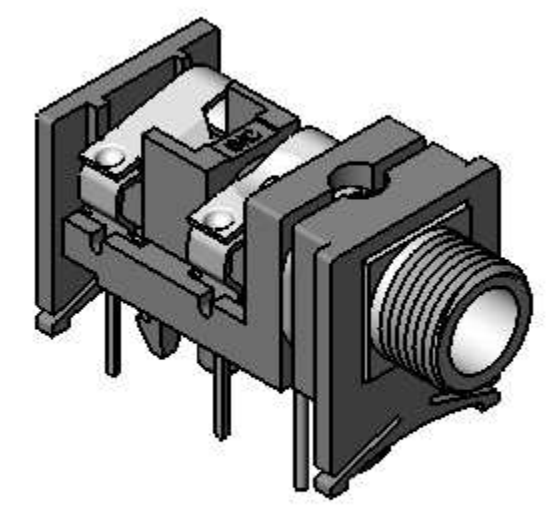
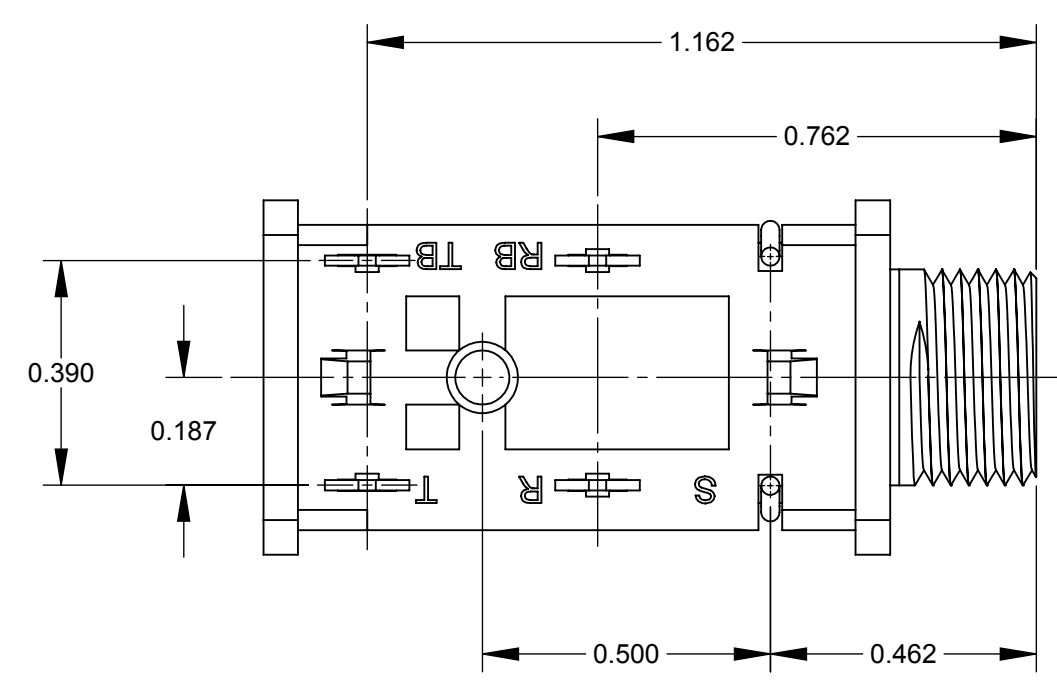
HEX NUT
SEE NOTE 4

WASHER
SEE NOTE 4



0.15
SEE NOTE 2

**SN49C14B
SHOWN**



**RECOMMENDED
PC BOARD LAYOUT
COMPONENT SIDE**

- NOTES:
- MAY BE USED WITH PC BOARD THICKNESSES RANGING FROM 0.054 - 0.070.
 - THESE DIMENSIONS VARY DEPENDING ON PCB THICKNESS. DIMENSIONS SHOWN ARE FREE STATE AS SHIPPED.
 - MATERIAL SPECIFICATIONS:
HOUSING - THERMOPLASTIC, BLACK.
SPRINGS - SPECIAL COPPER ALLOY, TINNED.
BUSHING - COPPER ALLOY, NICKEL PLATED.
SLEEVE TERMINAL - SPECIAL COPPER ALLOY, TINNED.
HARDWARE - COPPER ALLOY, NICKEL PLATED.
 - HARDWARE SHIPPED UNASSEMBLED.
 - THESE PRODUCTS ARE RoHS COMPLIANT.

PART NUMBER	DIM "A"		DIM "B"	
	FREE STATE	WITH 0.062 THICK PCB	FREE STATE	WITH 0.062 THICK PCB
SN49C11	0.504	0.492	0.754	0.742
SN49C12A	0.504	0.492	0.754	0.742
SN49C12B	0.504	0.492	0.754	0.742
SN49C14B	0.504	0.492	0.754	0.742

REV	ECO NUMBER	DATE	BY	APVD
D	CAD REDRAW ECO #27409	11/17/14	PC	TJK

UNLESS OTHERWISE SPECIFIED
1. ALL DIMENSIONS IN INCHES
- TWO PLACE DECIMALS ±0.02
- THREE PLACE DECIMALS ±0.005

THIS DRAWING DESCRIBES A DESIGN CONSIDERED PROPRIETARY IN NATURE, DEVELOPED AND MANUFACTURED BY SWITCHCRAFT INC. AND IS RELEASED ON A CONFIDENTIAL BASIS FOR IDENTIFICATION PURPOSES ONLY.

SIZE	WIDTH	MULT	LBS/M	TEMPER
FINISH		MATERIAL		
SPEC No.		SPEC No.		
FIRST USED ON		SCALE		
		3:1		
DATE DRAWN	BY	CHKD	APVD	
06/04/84	VL	02/14/85	02/14/85	
NAME				REV
PHONE JACK METAL BUSHING				D
PART No.				
SN49C SERIES				

CUSTOMER DRAWING