



Chipsmall Limited consists of a professional team with an average of over 10 year of expertise in the distribution of electronic components. Based in Hongkong, we have already established firm and mutual-benefit business relationships with customers from,Europe,America and south Asia,supplying obsolete and hard-to-find components to meet their specific needs.

With the principle of “Quality Parts,Customers Priority,Honest Operation,and Considerate Service”,our business mainly focus on the distribution of electronic components. Line cards we deal with include Microchip,ALPS,ROHM,Xilinx,Pulse,ON,Everlight and Freescale. Main products comprise IC,Modules,Potentiometer,IC Socket,Relay,Connector.Our parts cover such applications as commercial,industrial, and automotives areas.

We are looking forward to setting up business relationship with you and hope to provide you with the best service and solution. Let us make a better world for our industry!



Contact us

Tel: +86-755-8981 8866 Fax: +86-755-8427 6832

Email & Skype: info@chipsmall.com Web: www.chipsmall.com

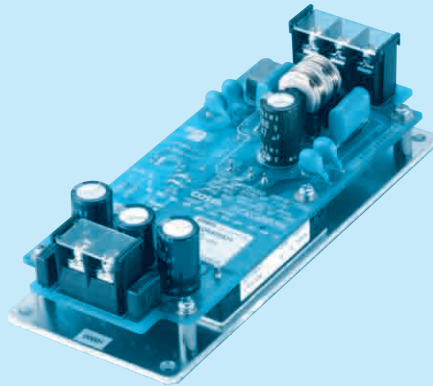
Address: A1208, Overseas Decoration Building, #122 Zhenhua RD., Futian, Shenzhen, China



SNDHS50A

SNDH S 50 A 05 -□

① ② ③ ④ ⑤ ⑥



- ① Series name
- ② Single output
- ③ Output wattage
- ④ A : DC60-160V
- ⑤ Output voltage
- ⑥ Optional
- C : with Coating
- R : with Remote ON/OFF

Please refer to Instruction manual 7.

MODEL	SNDHS50A05	SNDHS50A12	SNDHS50A15	SNDHS50A24
MAX OUTPUT WATTAGE[W]	50.0	50.4	51.0	50.4
DC OUTPUT	5V 10A	12V 4.2A	15V 3.4A	24V 2.1A

SPECIFICATIONS

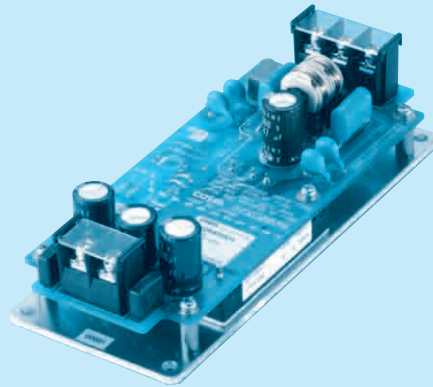
	MODEL	SNDHS50A05	SNDHS50A12	SNDHS50A15	SNDHS50A24	
INPUT	VOLTAGE[V]	DC60 - 160				
	CURRENT[A]	*1 0.55typ	0.55typ	0.55typ	0.55typ	
	EFFICIENCY[%]	*1 83.0typ	85.0typ	85.0typ	85.0typ	
OUTPUT	VOLTAGE[V]	5	12	15	24	
	CURRENT[A]	10	4.2	3.4	2.1	
	LINE REGULATION[mV]	10max	24max	30max	48max	
	LOAD REGULATION[mV]	150max	100max	100max	100max	
	RIPPLE[mVp-p]	0 to +95°C *2	80max	120max	120max	120max
		-20 to 0°C *2	120max	150max	150max	150max
		0 to 15% Load *2	160max	240max	240max	240max
	RIPPLE NOISE[mVp-p]	0 to +95°C *2	160max	200max	200max	200max
		-20 to 0°C *2	250max	280max	280max	280max
		0 to 15% Load *2	300max	300max	300max	300max
	TEMPERATURE REGULATION[mV]	0 to +50°C	50max	120max	150max	240max
		-20 to +95°C	100max	240max	300max	480max
	DRIFT[mV]	*3	20max	40max	60max	90max
START-UP TIME[ms]	200max (DCIN 110V, Io=100%)					
OUTPUT VOLTAGE ADJUSTMENT RANGE[V]	*4	4.50 - 5.50	10.80 - 13.20	13.50 - 16.50	21.60 - 26.40	
OUTPUT VOLTAGE SETTING[V]		5.00 - 5.15	12.00 - 12.48	15.00 - 15.60	24.00 - 24.96	
PROTECTION CIRCUIT AND OTHERS	OVERCURRENT PROTECTION	Works over 105% of rating and recovers automatically				
	OVERVOLTAGE PROTECTION[V]	6.30 - 7.60	13.90 - 17.55	17.25 - 21.75	27.60 - 34.80	
	REMOTE SENSING	None				
	REMOTE ON/OFF (RC)	Optional (Required external power source)				
ISOLATION	INPUT-OUTPUT, RC	*5	AC3,000V 1minute, Cutoff current = 15mA, DC500V 50MΩ min (20±15°C)			
	INPUT-FG		AC2,000V 1minute, Cutoff current = 15mA, DC500V 50MΩ min (20±15°C)			
	OUTPUT, RC-FG	*5	AC500V 1minute, Cutoff current = 100mA, DC500V 50MΩ min (20±15°C)			
	OUTPUT-RC	*5	AC100V 1minute, Cutoff current = 25mA, DC100V 10MΩ min (20±15°C)			
ENVIRONMENT	OPERATING TEMP., HUMID. AND ALTITUDE	*6	-20 to +95°C (Aluminum base plate of the power module), 20 - 95%RH (Non condensing) (Refer to DERATING CURVE), 3,000m (10,000 feet) max			
	STORAGE TEMP., HUMID. AND ALTITUDE		-20 to +95°C, 20 - 95%RH (Non condensing), 9,000m (30,000 feet) max			
	VIBRATION		10 - 55Hz, 19.6m/s ² (2G), 3minutes period, 60minutes each along X, Y and Z axis			
	IMPACT		196.1m/s ² (20G), 11ms, once each along X, Y and Z axis			
SAFETY	AGENCY APPROVALS	UL60950-1, C-UL, EN60950-1				
	CONDUCTED NOISE (at only DC input)	Complies with FCC-A, VCCI-A, CISPR22-A, EN55011-A, EN55022-A				
OTHERS	CASE SIZE/WEIGHT	61.5 × 44.5 × 150mm [2.42 × 1.75 × 5.91 inches] (W × H × D) / 270g max				
	COOLING METHOD	Conduction cooling (e.g. heat radiation from the aluminum base plate to the attached heat sink)				

- *1 At rated input(DC110V) and rated load.
- *2 Ripple and ripple noise is measured by using measuring board with capacitor of 22 μF at 150mm [5.91 inches] from output terminal. Refer to the instruction manual 3.2.
- *3 Drift is the change in DC output for an eight hour period after a half-hour warm-up at 25°C, with the input voltage held constant at the rated input/output.
- *4 Refer to the instruction manual 4.6.
- *5 Applicable when remote control (optional) is added.
- *6 Refer to the instruction manual 6.2.

SNDHS100A

SNDH S 100 A 05 -□

① ② ③ ④ ⑤ ⑥



- ① Series name
- ② Single output
- ③ Output wattage
- ④ A : DC60-160V
- ⑤ Output voltage
- ⑥ Optional
- C : with Coating
- R : with Remote ON/OFF

Please refer to Instruction manual 7.

MODEL	SNDHS100A05	SNDHS100A12	SNDHS100A15	SNDHS100A24
MAX OUTPUT WATTAGE[W]	100.0	100.8	100.5	100.8
DC OUTPUT	5V 20A	12V 8.4A	15V 6.7A	24V 4.2A

SPECIFICATIONS

	MODEL	SNDHS100A05	SNDHS100A12	SNDHS100A15	SNDHS100A24	
INPUT	VOLTAGE[V]	DC60 - 160				
	CURRENT[A]	*1 1.1typ	1.1typ	1.1typ	1.1typ	
	EFFICIENCY[%]	*1 84.0typ	87.0typ	87.0typ	87.0typ	
OUTPUT	VOLTAGE[V]	5	12	15	24	
	CURRENT[A]	20	8.4	6.7	4.2	
	LINE REGULATION[mV]	10max	24max	30max	48max	
	LOAD REGULATION[mV]	150max	100max	100max	100max	
	RIPPLE[mVp-p]	0 to +95°C *2	80max	120max	120max	120max
		-20 to 0°C *2	120max	150max	150max	150max
		0 to 15% Load *2	160max	240max	240max	240max
	RIPPLE NOISE[mVp-p]	0 to +95°C *2	160max	200max	200max	200max
		-20 to 0°C *2	250max	280max	280max	280max
		0 to 15% Load *2	300max	300max	300max	300max
	TEMPERATURE REGULATION[mV]	0 to +50°C	50max	120max	150max	240max
		-20 to +95°C	100max	240max	300max	480max
	DRIFT[mV]	*3	20max	40max	60max	90max
START-UP TIME[ms]	200max (DCIN 110V, Io=100%)					
OUTPUT VOLTAGE ADJUSTMENT RANGE[V]	*4	4.50 - 5.50	10.80 - 13.20	13.50 - 16.50	21.60 - 26.40	
OUTPUT VOLTAGE SETTING[V]		5.00 - 5.15	12.00 - 12.48	15.00 - 15.60	24.00 - 24.96	
PROTECTION CIRCUIT AND OTHERS	OVERCURRENT PROTECTION	Works over 105% of rating and recovers automatically				
	OVERVOLTAGE PROTECTION[V]	6.30 - 7.60	13.90 - 17.55	17.25 - 21.75	27.60 - 34.80	
	REMOTE SENSING	None				
	REMOTE ON/OFF (RC)	Optional (Required external power source)				
ISOLATION	INPUT-OUTPUT, RC	*5	AC3,000V 1minute, Cutoff current = 15mA, DC500V 50MΩ min (20±15°C)			
	INPUT-FG		AC2,000V 1minute, Cutoff current = 15mA, DC500V 50MΩ min (20±15°C)			
	OUTPUT, RC-FG	*5	AC500V 1minute, Cutoff current = 100mA, DC500V 50MΩ min (20±15°C)			
	OUTPUT-RC	*5	AC100V 1minute, Cutoff current = 25mA, DC100V 10MΩ min (20±15°C)			
ENVIRONMENT	OPERATING TEMP., HUMID. AND ALTITUDE	*6	-20 to +95°C (Aluminum base plate of the power module), 20 - 95%RH (Non condensing) (Refer to DERATING CURVE), 3,000m (10,000 feet) max			
	STORAGE TEMP., HUMID. AND ALTITUDE		-20 to +95°C, 20 - 95%RH (Non condensing), 9,000m (30,000 feet) max			
	VIBRATION		10 - 55Hz, 19.6m/s ² (2G), 3minutes period, 60minutes each along X, Y and Z axis			
	IMPACT		196.1m/s ² (20G), 11ms, once each along X, Y and Z axis			
SAFETY	AGENCY APPROVALS	UL60950-1, C-UL, EN60950-1				
	CONDUCTED NOISE (at only DC input)	Complies with FCC-A, VCCI-A, CISPR22-A, EN55011-A, EN55022-A				
OTHERS	CASE SIZE/WEIGHT	61.5 × 44.5 × 150mm [2.42 × 1.75 × 5.91 inches] (W × H × D) / 270g max				
	COOLING METHOD	Conduction cooling (e.g. heat radiation from the aluminum base plate to the attached heat sink)				

- *1 At rated input(DC110V) and rated load.
- *2 Ripple and ripple noise is measured by using measuring board with capacitor of 22 μF at 150mm [5.91 inches] from output terminal. Refer to the instruction manual 3.2.
- *3 Drift is the change in DC output for an eight hour period after a half-hour warm-up at 25°C, with the input voltage held constant at the rated input/output.
- *4 Refer to the instruction manual 4.6.
- *5 Applicable when remote control (optional) is added.
- *6 Refer to the instruction manual 6.2.

SNDHS200A

SNDH S 200 A 05 -□

① ② ③ ④ ⑤ ⑥



- ① Series name
- ② Single output
- ③ Output wattage
- ④ A : DC60-160V
- ⑤ Output voltage
- ⑥ Optional
- C : with Coating
- R : with Remote ON/OFF

Please refer to Instruction manual 7.

MODEL	SNDHS200A05	SNDHS200A12	SNDHS200A15	SNDHS200A24
MAX OUTPUT WATTAGE[W]	200.0	200.4	201.0	201.6
DC OUTPUT	5V 40A	12V 16.7A	15V 13.4A	24V 8.4A

SPECIFICATIONS

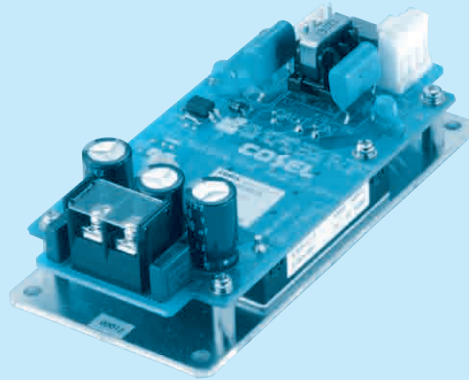
	MODEL	SNDHS200A05	SNDHS200A12	SNDHS200A15	SNDHS200A24	
INPUT	VOLTAGE[V]	DC60 - 160				
	CURRENT[A]	*1 2.1typ	2.1typ	2.1typ	2.1typ	
	EFFICIENCY[%]	*1 87.0typ	87.0typ	87.0typ	87.0typ	
OUTPUT	VOLTAGE[V]	5	12	15	24	
	CURRENT[A]	40	16.7	13.4	8.4	
	LINE REGULATION[mV]	10max	24max	30max	48max	
	LOAD REGULATION[mV]	150max	100max	100max	100max	
	RIPPLE[mVp-p]	0 to +95°C *2	80max	120max	120max	120max
		-20 to 0°C *2	120max	150max	150max	150max
		0 to 15% Load *2	160max	240max	240max	240max
	RIPPLE NOISE[mVp-p]	0 to +95°C *2	160max	200max	200max	200max
		-20 to 0°C *2	250max	280max	280max	280max
		0 to 15% Load *2	300max	300max	300max	300max
	TEMPERATURE REGULATION[mV]	0 to +50°C	50max	120max	150max	240max
		-20 to +95°C	100max	240max	300max	480max
	DRIFT[mV]	*3 20max	40max	60max	90max	
START-UP TIME[ms]	200max (DCIN 110V, Io=100%)					
OUTPUT VOLTAGE ADJUSTMENT RANGE[V]	*4 4.50 - 5.50	10.80 - 13.20	13.50 - 16.50	21.60 - 26.40		
OUTPUT VOLTAGE SETTING[V]	5.00 - 5.15	12.00 - 12.48	15.00 - 15.60	24.00 - 24.96		
PROTECTION CIRCUIT AND OTHERS	OVERCURRENT PROTECTION	Works over 105% of rating and recovers automatically				
	OVERVOLTAGE PROTECTION[V]	6.30 - 7.60	13.90 - 16.35	17.25 - 20.25	27.60 - 32.40	
	REMOTE SENSING	Provided				
	REMOTE ON/OFF (RC)	Optional (Required external power source)				
ISOLATION	INPUT-OUTPUT, RC	*5 AC3,000V 1minute, Cutoff current = 15mA, DC500V 50MΩ min (20±15°C)				
	INPUT-FG	AC2,000V 1minute, Cutoff current = 15mA, DC500V 50MΩ min (20±15°C)				
	OUTPUT, RC-FG	*5 AC500V 1minute, Cutoff current = 100mA, DC500V 50MΩ min (20±15°C)				
	OUTPUT-RC	*5 AC100V 1minute, Cutoff current = 25mA, DC100V 10MΩ min (20±15°C)				
ENVIRONMENT	OPERATING TEMP., HUMID. AND ALTITUDE	*6 -20 to +95°C (Aluminum base plate of the power module), 20 - 95%RH (Non condensing) (Refer to DERATING CURVE), 3,000m (10,000 feet) max				
	STORAGE TEMP., HUMID. AND ALTITUDE	-20 to +95°C, 20 - 95%RH (Non condensing), 9,000m (30,000 feet) max				
	VIBRATION	10 - 55Hz, 19.6m/s ² (2G), 3minutes period, 60minutes each along X, Y and Z axis				
	IMPACT	196.1m/s ² (20G), 11ms, once each along X, Y and Z axis				
SAFETY	AGENCY APPROVALS	UL60950-1, C-UL, EN60950-1				
	CONDUCTED NOISE (at only DC input)	Complies with FCC-A, VCCI-A, CISPR22-A, EN55011-A, EN55022-A				
OTHERS	CASE SIZE/WEIGHT	74.2×44.5×150mm [2.92×1.75×5.91 inches](W×H×D) / 390g max				
	COOLING METHOD	Conduction cooling (e.g. heat radiation from the aluminum base plate to the attached heat sink)				

- *1 At rated input(DC110V) and rated load.
- *2 Ripple and ripple noise is measured by using measuring board with capacitor of 22 μF at 150mm [5.91 inches] from output terminal. Refer to the instruction manual 3.2.
- *3 Drift is the change in DC output for an eight hour period after a half-hour warm-up at 25°C, with the input voltage held constant at the rated input/output.
- *4 Refer to the instruction manual 4.6.
- *5 Applicable when remote control (optional) is added.
- *6 Refer to the instruction manual 6.2.

SNDHS50B

SNDH S 50 B 05 -□

① ② ③ ④ ⑤ ⑥



- ① Series name
- ② Single output
- ③ Output wattage
- ④ B : DC200-400V
- ⑤ Output voltage
- ⑥ Optional
- C : with Coating
- R : with a function not to need external power source

MODEL	SNDHS50B03	SNDHS50B05	SNDHS50B12	SNDHS50B15	SNDHS50B24	SNDHS50B28
MAX OUTPUT WATTAGE[W]	33.0	50.0	50.4	51.0	50.4	50.4
DC OUTPUT	3.3V 10A	5V 10A	12V 4.2A	15V 3.4A	24V 2.1A	28V 1.8A

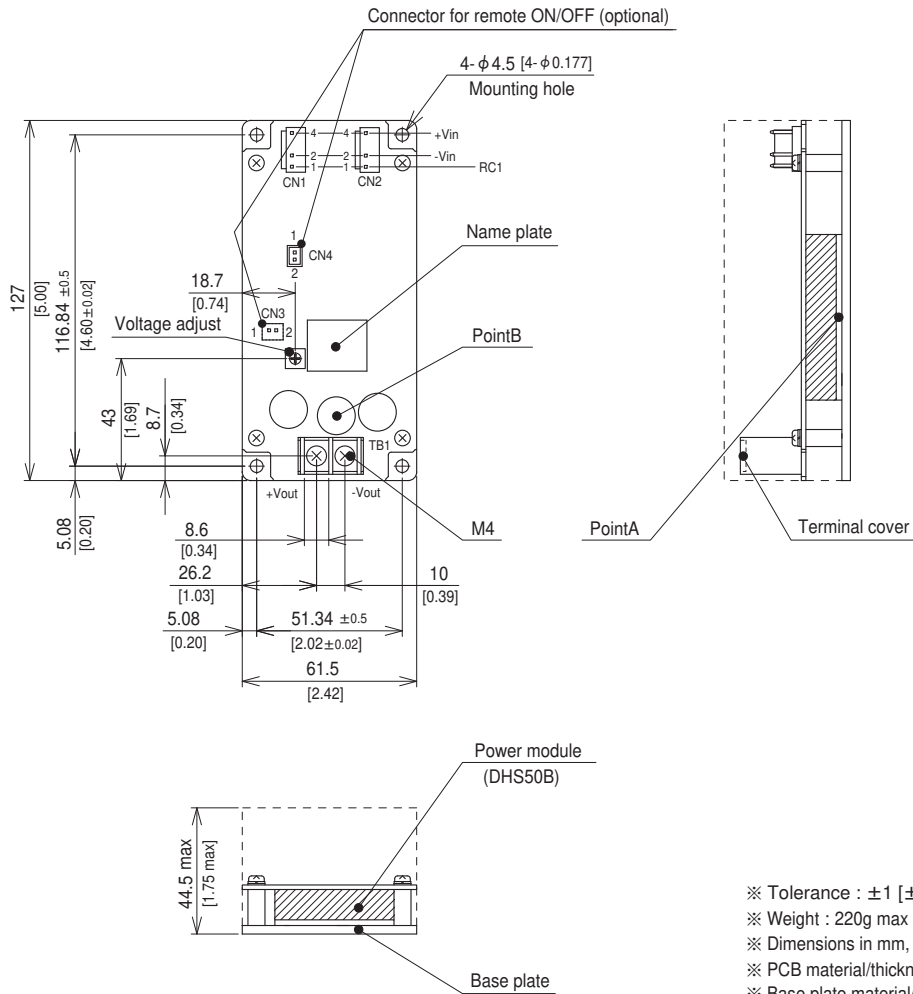
SPECIFICATIONS

	MODEL	SNDHS50B03	SNDHS50B05	SNDHS50B12	SNDHS50B15	SNDHS50B24	SNDHS50B28	
INPUT	VOLTAGE[V]	DC200 - 400 (Prepare another power supply to the RC1 terminal *)						
	CURRENT[A]	*1 0.15typ	0.22typ	0.22typ	0.22typ	0.22typ	0.22typ	
	EFFICIENCY[%]	*1 76.0typ	79.0typ	82.0typ	82.0typ	82.0typ	82.0typ	
OUTPUT	VOLTAGE[V]	3.3	5	12	15	24	28	
	CURRENT[A]	10	10	4.2	3.4	2.1	1.8	
	LINE REGULATION[mV]	10max	10max	24max	30max	48max	56max	
	LOAD REGULATION[mV]	150max	150max	100max	100max	100max	100max	
	RIPPLE[mVp-p]	0 to +95°C *2	80max	80max	120max	120max	120max	120max
		-20 to 0°C *2	120max	120max	150max	150max	150max	150max
		0 to 15% Load *2	160max	160max	240max	240max	240max	240max
	RIPPLE NOISE[mVp-p]	0 to +95°C *2	160max	160max	200max	200max	200max	200max
		-20 to 0°C *2	250max	250max	280max	280max	280max	280max
		0 to 15% Load *2	300max	300max	300max	300max	300max	300max
	TEMPERATURE REGULATION[mV]	0 to +50°C	35max	50max	120max	150max	240max	280max
		-20 to +95°C	66max	100max	240max	300max	480max	560max
	DRIFT[mV]	*3 16max	20max	40max	60max	90max	90max	
	START-UP TIME[ms]	200max (DCIN 280V, Io=100%)						
OUTPUT VOLTAGE ADJUSTMENT RANGE[V]	*4 2.97 - 3.63	4.50 - 5.50	10.80 - 13.20	13.50 - 16.50	21.60 - 26.40	25.20 - 30.80		
OUTPUT VOLTAGE SETTING[V]	3.30 - 3.40	5.00 - 5.15	12.00 - 12.48	15.00 - 15.60	24.00 - 24.96	28.00 - 29.12		
PROTECTION CIRCUIT AND OTHERS	OVERCURRENT PROTECTION	Works over 105% of rating and recovers automatically						
	OVERVOLTAGE PROTECTION[V]	4.20 - 5.70	6.30 - 7.60	13.90 - 17.55	17.25 - 21.75	27.60 - 34.80	32.20 - 40.60	
	REMOTE SENSING	None						
	REMOTE ON/OFF (RC1)	*6 Provided (Logic H : ON, L :OFF) Required external power source						
ISOLATION	INPUT-OUTPUT, RC2	*8 AC3,000V 1minute, Cutoff current = 10mA, DC500V 50MΩ min (20±15°C)						
	INPUT-FG	AC2,000V 1minute, Cutoff current = 10mA, DC500V 50MΩ min (20±15°C)						
	OUTPUT, RC2-FG	*8 AC500V 1minute, Cutoff current = 100mA, DC500V 50MΩ min (20±15°C)						
	OUTPUT-RC2	*8 AC100V 1minute, Cutoff current = 25mA, DC100V 10MΩ min (20±15°C)						
ENVIRONMENT	OPERATING TEMP.,HUMID.AND ALTITUDE	*7 -20 to +95°C (Aluminum base plate of the power module), 20 - 95%RH (Non condensing) (Refer to DERATING CURVE), 3,000m (10,000 feet) max						
	STORAGE TEMP.,HUMID.AND ALTITUDE	-20 to +95°C, 20 - 95%RH (Non condensing), 9,000m (30,000 feet) max						
	VIBRATION	10 - 55Hz, 19.6m/s ² (2G), 3minutes period, 60minutes each along X, Y and Z axis						
	IMPACT	196.1m/s ² (20G), 11ms, once each along X, Y and Z axis						
SAFETY	AGENCY APPROVALS	UL60950-1, C-UL, EN60950-1						
OTHERS	CASE SIZE/WEIGHT	61.5×44.5×127mm [2.42×1.75×5.0 inches] (W×H×D) / 220g max						
	COOLING METHOD	Conduction cooling (e.g. heat radiation from the aluminum base plate to the attached heat sink)						

*1 At rated input(DC280V) and rated load.
 *2 Ripple and ripple noise is measured by using measuring board with capacitor of 22 μF at 150mm [5.91 inches] from output terminal.
 Refer to the instruction manual 3.2.
 *3 Drift is the change in DC output for an eight hour period after a half-hour warm-up at 25°C, with the input voltage held constant at the rated input/output.
 *4 Refer to the instruction manual 4.6.
 *5 Refer to the instruction manual 2, 4.4

*6 Refer to the instruction manual 4.4
 *7 Refer to the instruction manual 6.2
 *8 "RC2" is applicable to an option not to need external power source.

External view

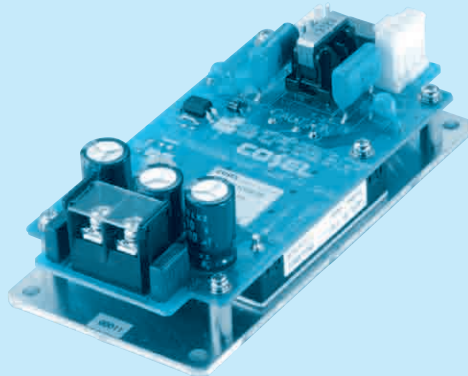


- ※ Tolerance : ± 1 [± 0.04]
- ※ Weight : 220g max
- ※ Dimensions in mm, []=inches
- ※ PCB material/thickness : FR-4 / 1.6mm [0.06]
- ※ Base plate material/thickness : Alminum / 3.0mm[0.12]
- ※ Screw tightening torque : 1.6N · m (16.9kgf · cm) max
- ※ Component positions and sizes are for your reference if they have no dimensions.
- ※ Please connect safety ground to the base plate in ϕ 4.5 [ϕ 0.177] hole.

SNDHS100B

SNDH S 100 B 05 -□

① ② ③ ④ ⑤ ⑥



- ① Series name
- ② Single output
- ③ Output wattage
- ④ B : DC200-400V
- ⑤ Output voltage
- ⑥ Optional
- C : with Coating
- R : with a function not to need external power source

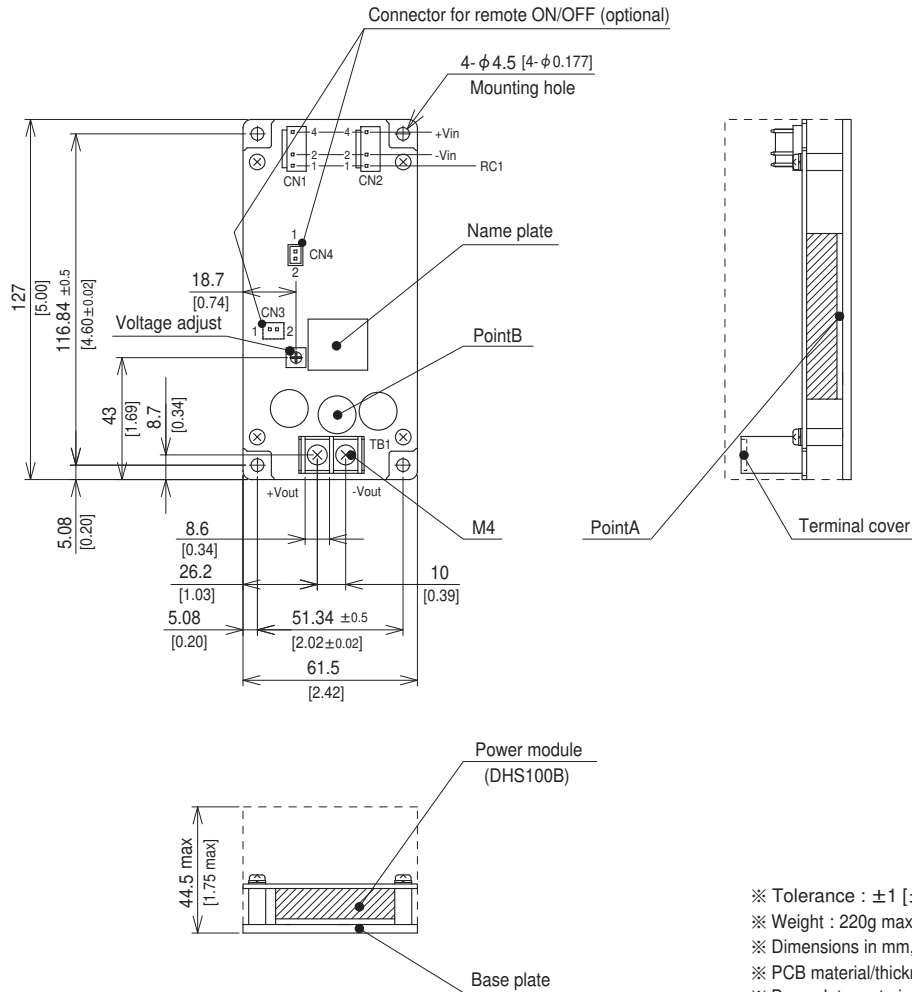
MODEL	SNDHS100B03	SNDHS100B05	SNDHS100B12	SNDHS100B15	SNDHS100B24	SNDHS100B28
MAX OUTPUT WATTAGE[W]	66.0	100.0	100.8	100.5	100.8	100.8
DC OUTPUT	3.3V 20A	5V 20A	12V 8.4A	15V 6.7A	24V 4.2A	28V 3.6A

SPECIFICATIONS

	MODEL	SNDHS100B03	SNDHS100B05	SNDHS100B12	SNDHS100B15	SNDHS100B24	SNDHS100B28	
INPUT	VOLTAGE[V]	DC200 - 400 (Prepare another power supply to the RC1 terminal *)						
	CURRENT[A]	*1 0.30typ	0.44typ	0.42typ	0.42typ	0.42typ	0.42typ	
	EFFICIENCY[%]	*1 78.0typ	81.0typ	84.0typ	85.0typ	85.0typ	85.0typ	
OUTPUT	VOLTAGE[V]	3.3	5	12	15	24	28	
	CURRENT[A]	20	20	8.4	6.7	4.2	3.6	
	LINE REGULATION[mV]	10max	10max	24max	30max	48max	56max	
	LOAD REGULATION[mV]	150max	150max	100max	100max	100max	100max	
	RIPPLE[mVp-p]	0 to +95°C *2	80max	80max	120max	120max	120max	120max
		-20 to 0°C *2	120max	120max	150max	150max	150max	150max
		0 to 15% Load *2	160max	160max	240max	240max	240max	240max
	RIPPLE NOISE[mVp-p]	0 to +95°C *2	160max	160max	200max	200max	200max	200max
		-20 to 0°C *2	250max	250max	280max	280max	280max	280max
		0 to 15% Load *2	300max	300max	300max	300max	300max	300max
	TEMPERATURE REGULATION[mV]	0 to +50°C	35max	50max	120max	150max	240max	280max
		-20 to +95°C	66max	100max	240max	300max	480max	560max
	DRIFT[mV]	*3 16max	20max	40max	60max	90max	90max	
START-UP TIME[ms]	200max (DCIN 280V, Io=100%)							
OUTPUT VOLTAGE ADJUSTMENT RANGE[V]	*4 2.97 - 3.63	4.50 - 5.50	10.80 - 13.20	13.50 - 16.50	21.60 - 26.40	25.20 - 30.80		
OUTPUT VOLTAGE SETTING[V]	3.30 - 3.40	5.00 - 5.15	12.00 - 12.48	15.00 - 15.60	24.00 - 24.96	28.00 - 29.12		
PROTECTION CIRCUIT AND OTHERS	OVERCURRENT PROTECTION	Works over 105% of rating and recovers automatically						
	OVERVOLTAGE PROTECTION[V]	4.20 - 5.70	6.30 - 7.60	13.90 - 17.55	17.25 - 21.75	27.60 - 34.80	32.20 - 40.60	
	REMOTE SENSING	None						
	REMOTE ON/OFF (RC1)	*6 Provided (Logic H : ON, L :OFF) Required external power source						
ISOLATION	INPUT-OUTPUT, RC2	*8 AC3,000V 1minute, Cutoff current = 10mA, DC500V 50MΩ min (20±15°C)						
	INPUT-FG	AC2,000V 1minute, Cutoff current = 10mA, DC500V 50MΩ min (20±15°C)						
	OUTPUT, RC2-FG	*8 AC500V 1minute, Cutoff current = 100mA, DC500V 50MΩ min (20±15°C)						
	OUTPUT-RC2	*8 AC100V 1minute, Cutoff current = 25mA, DC100V 10MΩ min (20±15°C)						
ENVIRONMENT	OPERATING TEMP., HUMID. AND ALTITUDE	*7 -20 to +95°C (Aluminum base plate of the power module), 20 - 95%RH (Non condensing) (Refer to DERATING CURVE), 3,000m (10,000 feet) max						
	STORAGE TEMP., HUMID. AND ALTITUDE	-20 to +95°C, 20 - 95%RH (Non condensing), 9,000m (30,000 feet) max						
	VIBRATION	10 - 55Hz, 19.6m/s ² (2G), 3minutes period, 60minutes each along X, Y and Z axis						
	IMPACT	196.1m/s ² (20G), 11ms, once each along X, Y and Z axis						
SAFETY	AGENCY APPROVALS	UL60950-1, C-UL, EN60950-1						
OTHERS	CASE SIZE/WEIGHT	61.5×44.5×127mm [2.42×1.75×5.0 inches] (W×H×D) / 220g max						
	COOLING METHOD	Conduction cooling (e.g. heat radiation from the aluminum base plate to the attached heat sink)						

*1 At rated input(DC280V) and rated load.
 *2 Ripple and ripple noise is measured by using measuring board with capacitor of 22μF at 150mm [5.91 inches] from output terminal.
 *3 Drift is the change in DC output for an eight hour period after a half-hour warm-up at 25°C, with the input voltage held constant at the rated input/output.
 *4 Refer to the instruction manual 4.6.
 *5 Refer to the instruction manual 2, 4.4
 *6 Refer to the instruction manual 4.4
 *7 Refer to the instruction manual 6.2
 *8 "RC2" is applicable to an option not to need external power source.

External view



- ※ Tolerance : ±1 [±0.04]
- ※ Weight : 220g max
- ※ Dimensions in mm, []=inches
- ※ PCB material/thickness : FR-4 / 1.6mm [0.06]
- ※ Base plate material/thickness : Alminum / 3.0mm[0.12]
- ※ Screw tightening torque : 1.6N · m (16.9kgf · cm) max
- ※ Component positions and sizes are for your reference if they have no dimensions.
- ※ Please connect safety ground to the base plate in φ 4.5 [φ 0.177] hole.

