



Chipsmall Limited consists of a professional team with an average of over 10 year of expertise in the distribution of electronic components. Based in Hongkong, we have already established firm and mutual-benefit business relationships with customers from,Europe,America and south Asia,supplying obsolete and hard-to-find components to meet their specific needs.

With the principle of "Quality Parts,Customers Priority,Honest Operation,and Considerate Service",our business mainly focus on the distribution of electronic components. Line cards we deal with include Microchip,ALPS,ROHM,Xilinx,Pulse,ON,Everlight and Freescale. Main products comprise IC,Modules,Potentiometer,IC Socket,Relay,Connector.Our parts cover such applications as commercial,industrial, and automotives areas.

We are looking forward to setting up business relationship with you and hope to provide you with the best service and solution. Let us make a better world for our industry!



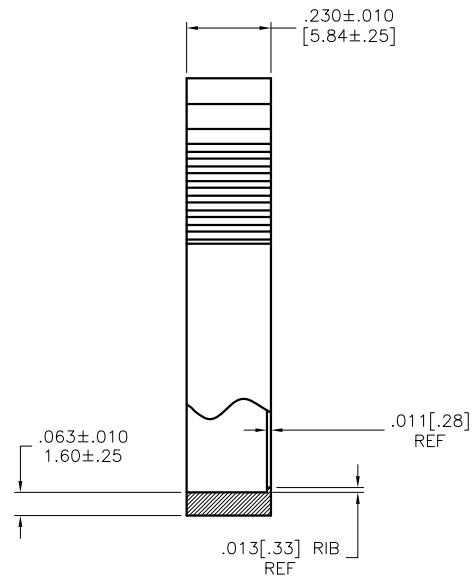
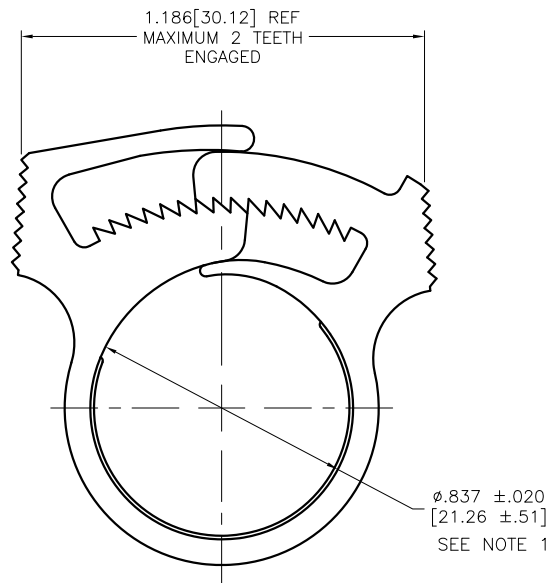
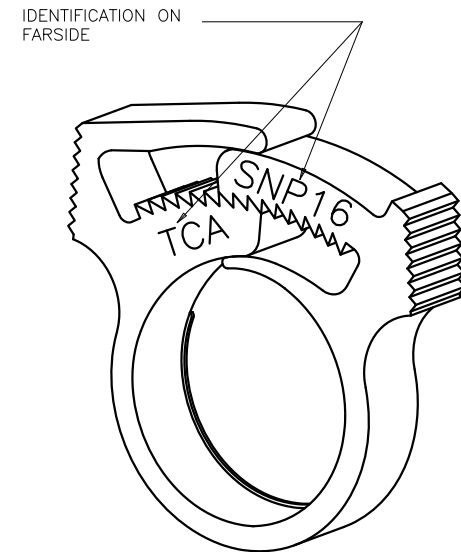
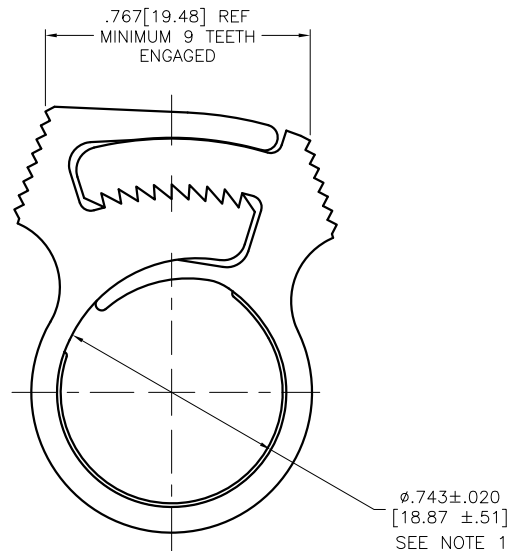
## Contact us

Tel: +86-755-8981 8866 Fax: +86-755-8427 6832

Email & Skype: [info@chipsmall.com](mailto:info@chipsmall.com) Web: [www.chipsmall.com](http://www.chipsmall.com)

Address: A1208, Overseas Decoration Building, #122 Zhenhua RD., Futian, Shenzhen, China





REDUCED  
NO SCALE

**HellermannTyton**

ALL PROPRIETARY RIGHTS IN THE SUBJECT MATTER SHOWN ON  
THIS DRAWING ARE EXCLUSIVE PROPERTY OF TYTONHELLERMANN

name	date	city, state

NOTES

- 1.) INSIDE DIAMETERS ARE MEASURED IN THREE PLACES SPACED 120°  
APART EXCLUDING RIB .013.
- 2.) DRAWING CREATED FROM SNP-12 DATA BASE.  
USE FOR DIMENSIONAL INFO. ONLY.

REVISION  
level  
date 07/15/13  
by AAC  
ECN # 012404  
part level -

DIMENSIONS  
TOLERANCES  
.XXXX=  
.XXX= NOTED  
.XX= NOTED  
.X=  
L=  
unless otherwise specified  
units inches/mm

number SNP16 phase PRODUCTION  
name SNAPPER 16  
HOSE CLAMP  
material ACETAL

number C version L CAD ACAD scale 4X  
computer file number CP\CST\2016002\_01 previous number  
drawn A.A.C. 07/15/13 checked K.A.C. 07/15/13 approved  
type CUSTOMER sheet 1 of 1  
number CP2016002CST