



Chipsmall Limited consists of a professional team with an average of over 10 year of expertise in the distribution of electronic components. Based in Hongkong, we have already established firm and mutual-benefit business relationships with customers from,Europe,America and south Asia,supplying obsolete and hard-to-find components to meet their specific needs.

With the principle of “Quality Parts,Customers Priority,Honest Operation,and Considerate Service”,our business mainly focus on the distribution of electronic components. Line cards we deal with include Microchip,ALPS,ROHM,Xilinx,Pulse,ON,Everlight and Freescale. Main products comprise IC,Modules,Potentiometer,IC Socket,Relay,Connector.Our parts cover such applications as commercial,industrial, and automotives areas.

We are looking forward to setting up business relationship with you and hope to provide you with the best service and solution. Let us make a better world for our industry!



## Contact us

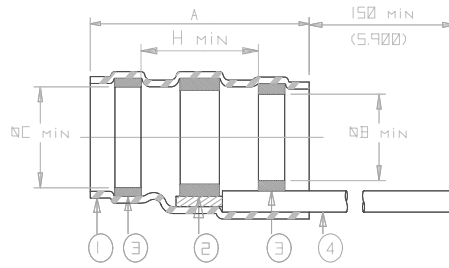
Tel: +86-755-8981 8866 Fax: +86-755-8427 6832

Email & Skype: info@chipsmall.com Web: www.chipsmall.com

Address: A1208, Overseas Decoration Building, #122 Zhenhua RD., Futian, Shenzhen, China



# SPECIFICATION CONTROL DRAWING



| Product Rev     |   | Product Dimensions |                 |                 |                 | Cable Dimensions |                 |                 |                 |                   |
|-----------------|---|--------------------|-----------------|-----------------|-----------------|------------------|-----------------|-----------------|-----------------|-------------------|
| Product Name    |   | A±1.75<br>(A±0.07) | 8min            | C min           | H min           | E max            | F min           | G min           | D max           | J±0.5<br>(J±0.02) |
| SO63-1-82-22-90 | A | 16.5<br>(0.650)    | 1.90<br>(0.070) | 2.65<br>(0.105) | 8.25<br>(0.325) | 2.65<br>(0.105)  | 0.90<br>(0.035) | 0.50<br>(0.020) | 1.90<br>(0.077) | 7.5<br>(0.298)    |
| SO63-2-82-22-90 | A | 16.5<br>(0.650)    | 2.65<br>(0.105) | 3.55<br>(0.140) | 8.25<br>(0.325) | 3.55<br>(0.140)  | 1.40<br>(0.055) | 0.75<br>(0.085) | 2.65<br>(0.105) | 7.5<br>(0.295)    |
| SO63-3-82-22-90 | A | 16.5<br>(0.650)    | 4.30<br>(0.170) | 5.00<br>(0.195) | 8.25<br>(0.325) | 5.00<br>(0.195)  | 2.15<br>(0.085) | 1.25<br>(0.050) | 4.30<br>(0.170) | 7.5<br>(0.295)    |
| SO63-4-82-22-90 | A | 19.7<br>(0.775)    | 5.95<br>(0.235) | 6.45<br>(0.257) | 8.25<br>(0.325) | 6.45<br>(0.255)  | 3.30<br>(0.130) | 1.80<br>(0.070) | 5.95<br>(0.235) | 7.5<br>(0.295)    |
| SO63-5-82-22-90 | A | 19.7<br>(0.775)    | 7.00<br>(0.277) | 7.6<br>(0.300)  | 8.25<br>(0.325) | 7.6<br>(0.300)   | 4.30<br>(0.170) | 2.50<br>(0.100) | 7.00<br>(0.277) | 7.5<br>(0.295)    |

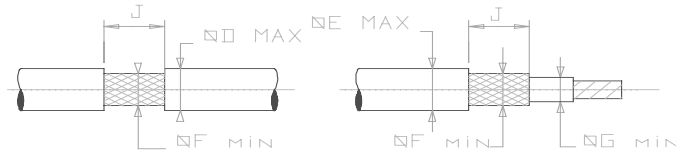
## MATERIAL

- Insulation sleeve: Heat-shrinkable, transparent blue, radiation cross-linked modified polyvinylidene fluoride.
- Solder preform with flux and thermal indicator: Sn63 Pb37 Solder alloy with mildly activated rosin flux.  
Thermal indicator, fusible ring: melt. Point: 221°C
- Meltable sealing ring: Environment resistant thermoplastic. color blue.
- Ground lead: Raychem flexline 82A0111, lead gauge and color per part number guide.

## APPLICATION

- These parts are designed to provide an environment resistant shield termination on cables, rated for 125°C min. meeting the dimensional criteria listed. Having tin or silverplated shields and insulations compatible with the insert material:  
See MIL-S-83519/1 or consult Raychem.
- Temperature range: -55°C to +150°C. Installed using Raychem approved convection or infrared process standard RCPS-100-70 infrared tools are not recommended for use with black jackets.

For best results, prepare the cable as shown



complete part number is defined as follow:



Lead color designation per MIL-STD-681.  
White with a single line stripe

Parts shall be noted with identification code per table. "G" is the minimum diameter on which the sleeve will seal.  
Unless otherwise specified dimensions are in millimeters.

|   |                 |   |  |  |                 |                     |                  |
|---|-----------------|---|--|--|-----------------|---------------------|------------------|
| <b>Raychem</b>  |                 | THERMOFIT DEVICES   | Raychem Corporation<br>300 Constitution Drive<br>Menlo Park, CA 94025<br>USA | TITLE:<br><b>SOLDERSLEEVE* DEVICE WITH PRE-INSTALLED LEAD IMMERSION RESISTANCE</b> |                 |                     |                  |
| UNLESS OTHERWISE SPECIFIED DIMENSIONS ARE IN MILLIMETERS. |                 |   |  | DOCUMENT NO: <b>SO63-X-82-22-90</b>  |                 |                     |                  |
| TOLERANCES:<br>0.00 N/A<br>0.0 N/A<br>0 N/A               | ANGLES: N/A     | Raychem reserves the right to amend this drawing at any time. Users should evaluate the suitability of the product for their application. |  | DCR NUMBER:<br>D980370   |                 | REPLACES:<br>SO6382 |                  |
| DRAWN BY:<br>JRIVERA                                      | DATE:<br>3/9/98 | REV.:<br>SEE TABLE  |  | DOC. ISSUE:<br>1   | SCALE:.<br>NONE | SIZE:<br>A          | SHEET:<br>1 of 1 |

If this document is printed it becomes uncontrolled. Check for the latest revision