



Chipsmall Limited consists of a professional team with an average of over 10 year of expertise in the distribution of electronic components. Based in Hongkong, we have already established firm and mutual-benefit business relationships with customers from,Europe,America and south Asia,supplying obsolete and hard-to-find components to meet their specific needs.

With the principle of “Quality Parts,Customers Priority,Honest Operation,and Considerate Service”,our business mainly focus on the distribution of electronic components. Line cards we deal with include Microchip,ALPS,ROHM,Xilinx,Pulse,ON,Everlight and Freescale. Main products comprise IC,Modules,Potentiometer,IC Socket,Relay,Connector.Our parts cover such applications as commercial,industrial, and automotives areas.

We are looking forward to setting up business relationship with you and hope to provide you with the best service and solution. Let us make a better world for our industry!



Contact us

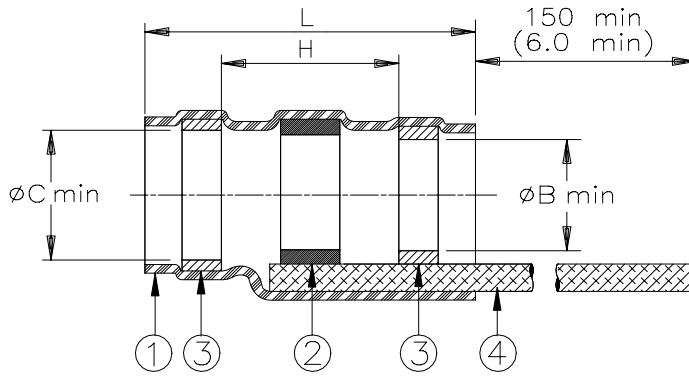
Tel: +86-755-8981 8866 Fax: +86-755-8427 6832

Email & Skype: info@chipsmall.com Web: www.chipsmall.com

Address: A1208, Overseas Decoration Building, #122 Zhenhua RD., Futian, Shenzhen, China



SPECIFICATION CONTROL DRAWING



Product Revision		Component Dimensions					Shall Accommodate Cable with Dimensions		
Product Name		Ident. Code	$L \pm 1.75$ ($L \pm 0.07$)	ϕB min	ϕC min	H min	ϕE max	ϕF min	ϕD max
SO96-1-01	E	SO961R	16.5 (0.650)	1.90 (0.070)	2.65 (0.105)	8.25 (0.325)	2.65 (0.105)	0.90 (0.035)	1.9 (0.075)
SO96-2-01	E	SO962R	16.5 (0.650)	2.65 (0.105)	3.55 (0.140)	8.25 (0.325)	3.55 (0.140)	1.40 (0.055)	2.65 (0.105)
SO96-3-01	E	SO963R	16.5 (0.650)	4.30 (0.170)	5.00 (0.195)	8.25 (0.325)	5.00 (0.195)	2.15 (0.085)	4.30 (0.170)
SO96-4-01	E	SO964R	19.7 (0.775)	5.95 (0.235)	6.45 (0.255)	8.25 (0.325)	6.45 (0.255)	3.30 (0.130)	5.95 (0.235)
SO96-5-01	E	SO965R	19.7 (0.775)	7.00 (0.277)	7.6 (0.300)	8.25 (0.325)	7.6 (0.300)	4.30 (0.170)	7.00 (0.277)

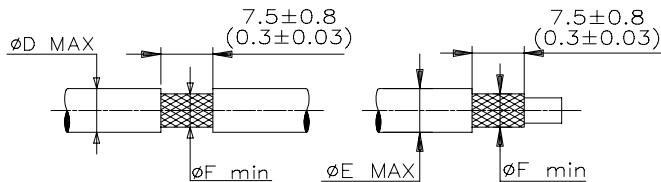
MATERIALS

- INSULATION SLEEVE: Heat-shrinkable, transparent blue, radiation cross-linked modified polyvinylidene fluoride.
- SOLDER PREFORM WITH FLUX AND THERMAL INDICATOR:
 SOLDER: TYPE Sn96 per ANSI-J-STD-006.
 FLUX: TYPE ROM1 per ANSI-J-STD-004.
 THERMAL INDICATOR: color change orange to colorless.
- MELTABLE RINGS: Stabilized thermoplastic. Color:blue.
- PRE-INSTALLED BRAID: Nickel plated copper strands. CMA 640.

APPLICATION

- These parts are designed to provide an environment protected shield termination on cables, rated for 150°C minimum, meeting the dimensional criteria listed, having nickel plated shields.
- Temperature range: -55°C to +175°C.
 Install using Raychem-approved convection or infrared heating tools in accordance with Raychem process standard RCPS-100-70. Infrared tools are not recommended for use with black jackets.

For best results, prepare the cable as shown:



* A trademark of Tyco Corporation.

tyco Electronics		Tyco Electronics Corporation 305 Constitutional Drive Menlo Park, CA 94025 USA		RAYCHEM		TITLE: SOLDERSLEEVE* DEVICE SHIELD TERMINATION WITH BRAID HIGH TEMPERATURE		
UNLESS OTHERWISE SPECIFIED DIMENSIONS ARE IN MILLIMETERS. INCHES DIMENSIONS ARE BETWEEN BRACKETS.						DOCUMENT no.: SO96-X-01		
TOLERANCES: 0.00 N/A 0.0 N/A 0 N/A	ANGLES: N/A	Tyco reserves the right to amend this drawing at any time. Users should evaluate the suitability of the product for their application.				DATE: June 29, 1998	DOC ISSUE: 3	
DRAWN BY: M. FORONDA	CAGE CODE: 06090	REPLACES: SO9601	DCR NUMBER: D981094	PROD. REV.: SEE TABLE	SCALE: None	SIZE: A	SHEET: 1 of 1	

If this document is printed it becomes uncontrolled. Check for the latest revision.