



Chipsmall Limited consists of a professional team with an average of over 10 year of expertise in the distribution of electronic components. Based in Hongkong, we have already established firm and mutual-benefit business relationships with customers from,Europe,America and south Asia,supplying obsolete and hard-to-find components to meet their specific needs.

With the principle of “Quality Parts,Customers Priority,Honest Operation,and Considerate Service”,our business mainly focus on the distribution of electronic components. Line cards we deal with include Microchip,ALPS,ROHM,Xilinx,Pulse,ON,Everlight and Freescale. Main products comprise IC,Modules,Potentiometer,IC Socket,Relay,Connector.Our parts cover such applications as commercial,industrial, and automotives areas.

We are looking forward to setting up business relationship with you and hope to provide you with the best service and solution. Let us make a better world for our industry!



## Contact us

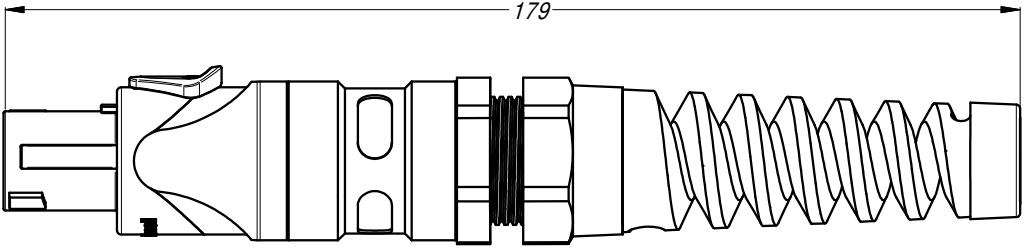
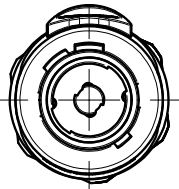
Tel: +86-755-8981 8866 Fax: +86-755-8427 6832

Email & Skype: [info@chipsmall.com](mailto:info@chipsmall.com) Web: [www.chipsmall.com](http://www.chipsmall.com)

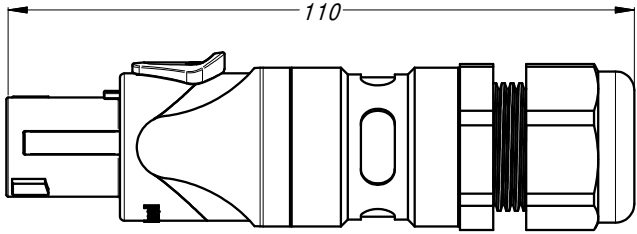
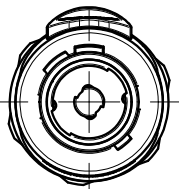
Address: A1208, Overseas Decoration Building, #122 Zhenhua RD., Futian, Shenzhen, China



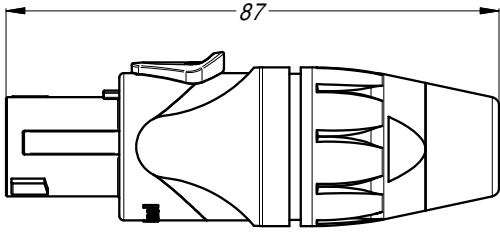
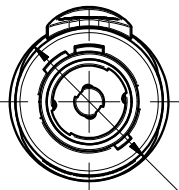
REVISION HISTORY					
REV	ZONE	DESCRIPTION	DATE	BY	ECN
1		FIRST RELEASE	30/11/11	T.N	9068



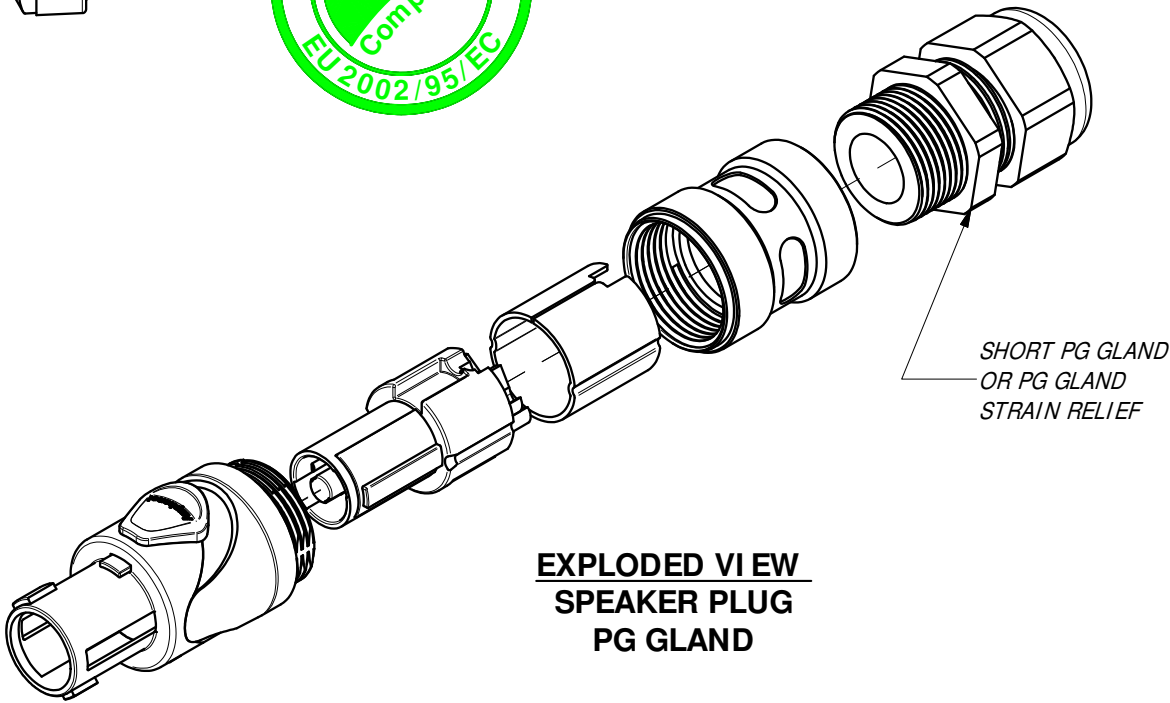
SPEAKER PLUG  
PG GLAND STRAIN RELIEF



SPEAKER PLUG  
PG GLAND

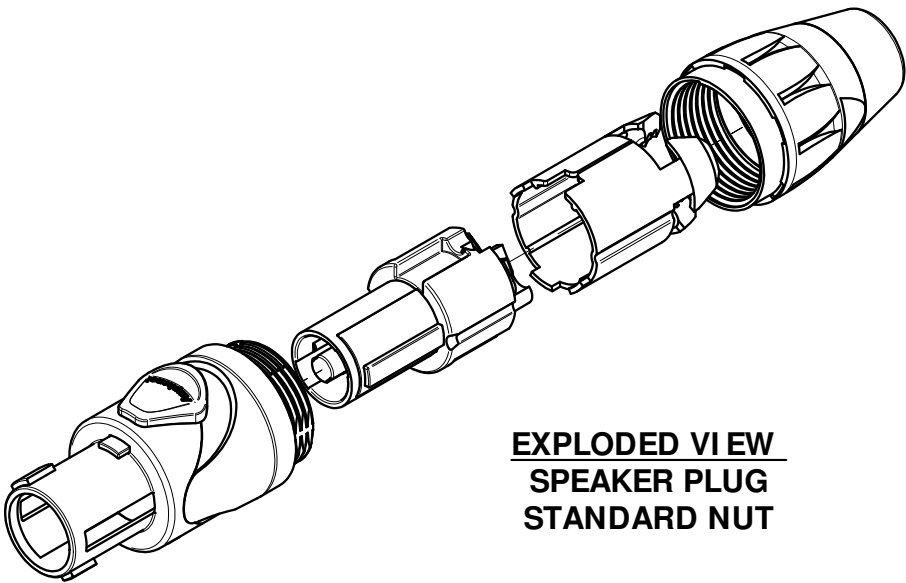


SPEAKER PLUG  
STANDARD NUT



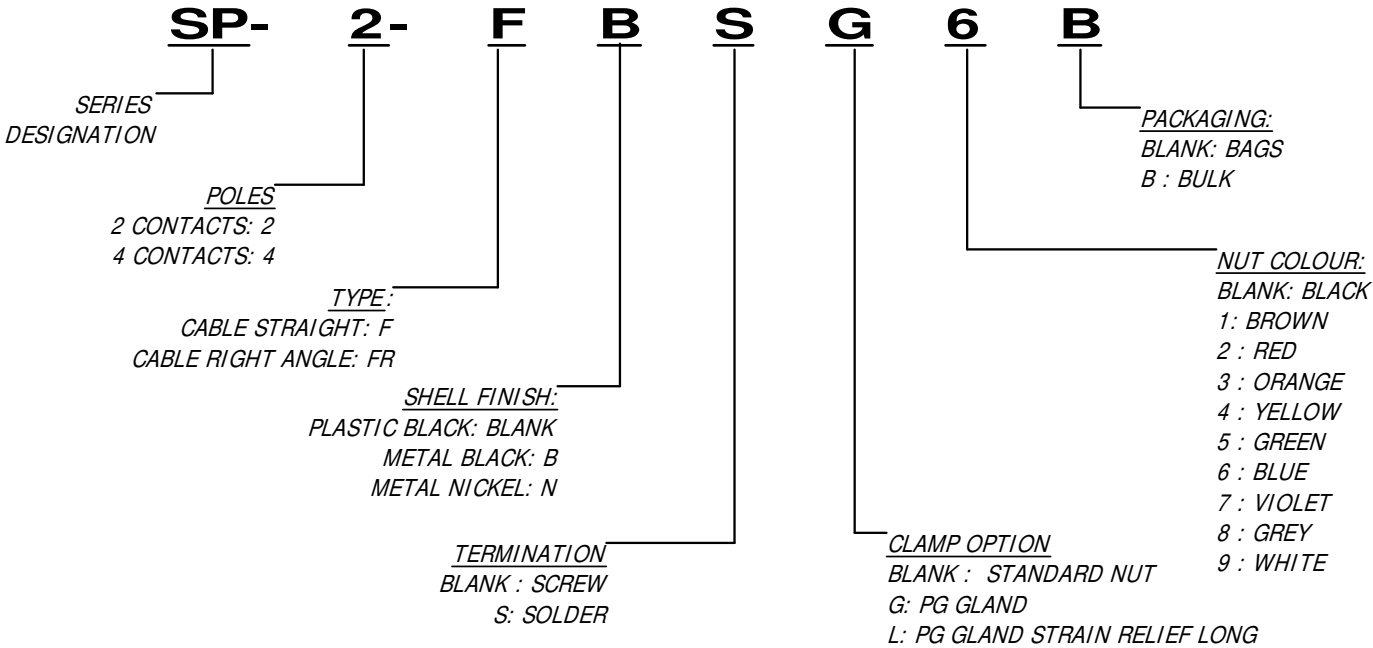
EXPLODED VIEW  
SPEAKER PLUG  
PG GLAND

SHORT PG GLAND  
OR PG GLAND  
STRAIN RELIEF



EXPLODED VIEW  
SPEAKER PLUG  
STANDARD NUT

PART NUMBER BREAKDOWN



UNLESS OTHERWISE SPECIFIED TOLERANCE TO BE		THIS DOCUMENT IS THE PROPERTY OF AMPHENOL AUSTRALIA PTY. LTD. . NO PART THEREOF MAY BE REPRODUCED AND USED WITHOUT THE PRIOR WRITTEN CONSENT OF THE OWNER				<b>Amphenol</b> Amphenol Australia Pty.Ltd, 2 Fiveways Blvd, Keysborough, VIC 3173	
LINEAR	ANGULAR	MATERIAL: <b>SEE COMPONENTS</b>		DRN: T.N	DATE: 30/11/11	TITLE: <b>LOUD SPEAKER CONNECTOR PLUG SP SERIES</b>	
X ± 0.5	X' ± 1	FINISH:		CKD: P.M	DATE: 30/11/11	PART No: <b>SEE P/ No BREAKDOWN</b>	
X.X ± 0.1	X.X' ± 30'	DO NOT SCALE		APP'D: T.N	DATE: 30/11/11	DRAWING NO. <b>55010772-000-2</b>	
X.XX ± 0.05	X.XX' ± 15'	DIMENSIONS IN MILLIMETRES		SCALE: <b>NTS</b>	SIZE: <b>A3</b>	SHEET <b>2/2</b>	
BREAK ALL SHARP EDGES AND REMOVE ALL BURRS		THIRD ANGLE PROJECTION		CAD FILE: 55010772000211			