



Chipsmall Limited consists of a professional team with an average of over 10 year of expertise in the distribution of electronic components. Based in Hongkong, we have already established firm and mutual-benefit business relationships with customers from,Europe,America and south Asia,supplying obsolete and hard-to-find components to meet their specific needs.

With the principle of “Quality Parts,Customers Priority,Honest Operation,and Considerate Service”,our business mainly focus on the distribution of electronic components. Line cards we deal with include Microchip,ALPS,ROHM,Xilinx,Pulse,ON,Everlight and Freescale. Main products comprise IC,Modules,Potentiometer,IC Socket,Relay,Connector.Our parts cover such applications as commercial,industrial, and automotives areas.

We are looking forward to setting up business relationship with you and hope to provide you with the best service and solution. Let us make a better world for our industry!



Contact us

Tel: +86-755-8981 8866 Fax: +86-755-8427 6832

Email & Skype: info@chipsmall.com Web: www.chipsmall.com

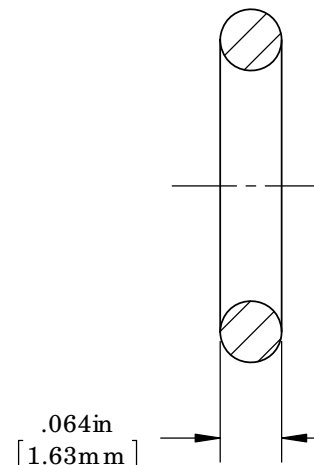
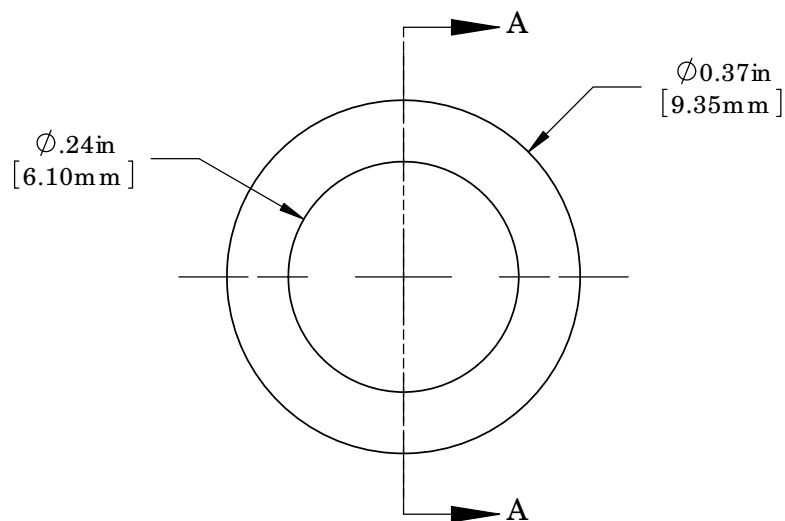
Address: A1208, Overseas Decoration Building, #122 Zhenhua RD., Futian, Shenzhen, China



NOTES:

1. OPERATING TEMPERATURE: -65 °F TO +300 °F
2. U.S. & FOREIGN PATENT ISSUED

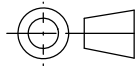
REVISIONS					
ECN #	REV.	DESCRIPTION	DATE	INITIALS	CHKD
	N/A	INITIAL RELEASE	7/12/01	JS	N/A
	001	REVISED PER EC R111009AZ01	2/12/10	KH	DPZ




SECTION A-A



ISOMETRIC VIEW

DIMENSION STYLE: INCHES (MM) GENERAL TOLERANCES UNLESS OTHERWISE SPECIFIED		
	INCHES	MM
.X	±.020	±.508
.XX	±.010	±.254
.XXX	±.005	±.127
ANGLE ± 1°		
 THIRD ANGLE PROJECTION PROPRIETARY AND CONFIDENTIAL THE INFORMATION CONTAINED IN THIS DRAWING IS THE SOLE PROPERTY OF VISUAL COMMUNICATIONS COMPANY, INC. ANY REPRODUCTION IN PART OR AS A WHOLE WITHOUT THE WRITTEN PERMISSION OF VISUAL COMMUNICATIONS COMPANY, INC IS PROHIBITED.		

APPROVAL		DATE
DRAWN	KHOWARD	2/12/11
CHECKED	DPZ	2/12/11
MATERIAL		
(EPDM) ETHYLENE PROPYLENE DIENE RUBBER, BLACK		
FINISH		
NONE		
DO NOT SCALE DRAWING		

 OPTO ELECTRONICS 190 BOSSICK BLVD. SUITE 101 SAN MARCOS, CA 92069 U.S.A. PHONE: (760) 560-1300, FAX: (760) 560-1301 EMAIL: vc csales@vccite.com		
TITLE: LENS SPACER SPC 060		
SIZE	DWG. NO.	REV
A	SPC 060	001
SCALE: 5:1		SHEET 1 OF 1