



Chipsmall Limited consists of a professional team with an average of over 10 year of expertise in the distribution of electronic components. Based in Hongkong, we have already established firm and mutual-benefit business relationships with customers from,Europe,America and south Asia,supplying obsolete and hard-to-find components to meet their specific needs.

With the principle of “Quality Parts,Customers Priority,Honest Operation,and Considerate Service”,our business mainly focus on the distribution of electronic components. Line cards we deal with include Microchip,ALPS,ROHM,Xilinx,Pulse,ON,Everlight and Freescale. Main products comprise IC,Modules,Potentiometer,IC Socket,Relay,Connector.Our parts cover such applications as commercial,industrial, and automotives areas.

We are looking forward to setting up business relationship with you and hope to provide you with the best service and solution. Let us make a better world for our industry!



Contact us

Tel: +86-755-8981 8866 Fax: +86-755-8427 6832

Email & Skype: info@chipsmall.com Web: www.chipsmall.com

Address: A1208, Overseas Decoration Building, #122 Zhenhua RD., Futian, Shenzhen, China



SOLARIS SERIES

Amphenol Pcd



Amphenol Pcd is one of the world's leading suppliers of interconnect products for Military, Commercial Aerospace and Industrial applications. Located north of Boston in Beverly, Massachusetts, the company designs and manufactures a wide range of products; System Attachments, Junction Modules, Relay Sockets, Terminal Blocks, Rectangular & Circular Connectors, Cable Assemblies and Adapters. Each product is made and engineered with the highest quality standards in the industry. With facilities in North America and Asia, Amphenol Pcd products are chosen by thousands of OEMs around the world, reliant on Amphenol's technical excellence, global network of distributors, and cost-effective solutions for custom systems.

Amphenol Pcd

72 Cherry Hill Dr. • Beverly, MA. 01915

978.624.3400 • info@amphenolpcd.com

www.amphenolpcd.com

SOLARIS Series

SOLARIS is a small, plastic, easy-to-use rectangular connector designed specifically for low and medium power applications.

Solaris' spring-loaded slide lock mechanism is a snap to use - simply push to lock, and slide to unlock. The slide lock provides convenient single handed & tool-less mating, eliminating the Foreign Object Debris (FOD), found in typical screw mount D-Subs. Each housing has raised finger ridges for a sure grip, and built-in cable tie access hole provides a "zero footprint" method to secure the connector to a bulkhead or cable bundle.

High grade polyetherimide plastic makes SOLARIS suitable for man/machine interfaces with high mating cycles, and provides a wide operating temperature range. Ultrasonically welded components means void free joints, sealing out humidity for long lasting, crack free operation over the life of the installation. Interfacial seal and wire seal grommets provide IP67 sealing, meaning your application is free from dust, moisture and corrosion when exposed to the real world.

So when you need a small, rugged, lightweight, easy to use rectangular connector - think SOLARIS!

Features & Benefits

Low profile rectangular form factor

Less than 0.5" tall. Fits into seat arms, backs, tray tables and compartments, as well as lower profile ceiling and side panels.

Slide Latch

Easy to use, FOD free, tool-less mating

Integrated Tie Wrap hole

Zero footprint tie down to pipes, bundles and bulkheads

Interfacial & Wire sealing

IP67 performance for use in human interface, wet and damp applications

Polyetherimide Housings

High temperature resistance, chemical resistance, long working life & high mating cycles

Integral boot ridge

Integrated feature for tying off protective sheathing and braids w/o adding backshells or saddle clamps

Snap-on strain relief

Tool-less, FOD free accessory that helps prevent wear and tear at cable / connector ingress

Reverse gender capability

Plugs & Receptacles may be configured with pins or sockets, allowing live power connector to be either plug or receptacle, depending on application requirements

Key Connector Specifications

(Preliminary)

| | |
|------------------------------------|---|
| | |
| Shock | 100G sawtooth, 6msec |
| Vibration | 15G peak sinusoidal, 16G peak random |
| Flammability & Toxicity | Meets FAR Par 25 Appendix F, Part 1 |
| Sealing | IP67 when mated |
| Fluid Resistance | Skydrol, Ethylene Glycol, Jet A, more |
| DWV | 1500Vac @ sea level, 300Vac @ 70k ft |
| IR | 500Vdc |
| Salt Spray | 5% solution @ 70K ft |
| Temperature | -65C to +150C |
| Mating Cycles | 500 minimum |
| Contacts | M39029/58 & /57 size 16, 20, & 22D |
| Keying | 4 hard coded keys, color matched to housing |

| Size | Pin | Socket | Power | Sealing Plug |
|------|---------------|---------------|-------|--------------|
| 22 | m39029/58360 | m39029/57-354 | 5a | MS27488-22-1 |
| 20 | m39029/58-363 | m39029/57-357 | 7.5a | MS27488-20-1 |
| 16 | m39029/58-364 | m39029/57-358 | 13.5a | MS27488-16-1 |

Standard Configurations

(Gender Reversible)

| Key & Type | Part Number | Type | Size | # of Contacts | Contact Size |
|------------|-------------|-------------------|------|---------------|--------------|
| A, Socket | SQR320150 | Plug | 1 | 3 | 20 |
| A, Pin | SQR320200 | Receptacle | 1 | 3 | 20 |
| A, Pin | SQR320500 | Flange Receptacle | 1 | 3 | 20 |
| A, Socket | SQR216150 | Plug | 2 | 2 | 16 |
| A, Pin | SQR216200 | Receptacle | 2 | 2 | 16 |
| A, Pin | SQR216500 | Flange Receptacle | 2 | 2 | 16 |
| A, Socket | SQR422150 | Plug | 1 | 4 | 22 |
| A, Pin | SQR422200 | Receptacle | 1 | 4 | 22 |
| A, Pin | SQR422500 | Flange Receptacle | 1 | 4 | 22 |
| A, Socket | SQR620150 | Plug | 2 | 6 | 20 |
| A, Pin | SQR620200 | Receptacle | 2 | 6 | 20 |
| A, Pin | SQR620500 | Flange Receptacle | 2 | 6 | 20 |
| A, Socket | SQR822150 | Receptacle | 2 | 8 | 22 |
| A, Pin | SQR822200 | Plug | 2 | 8 | 22 |
| A, Pin | SQR822500 | Flange Receptacle | 2 | 8 | 22 |

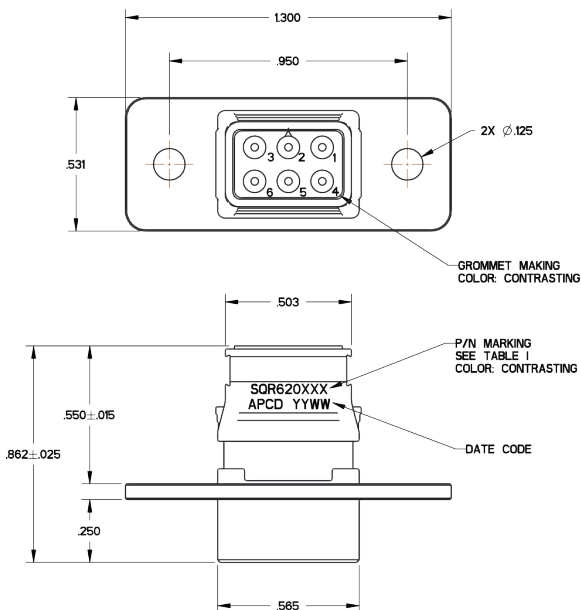
REV A Configurations

(Not Gender Reversible)

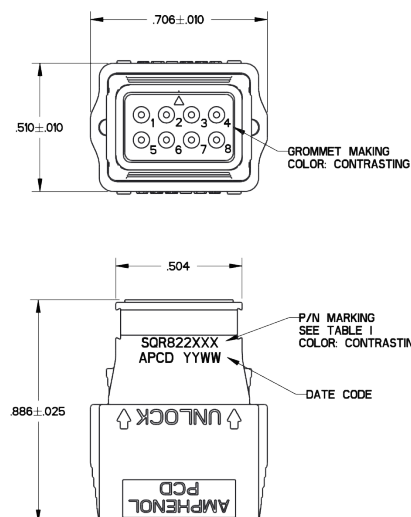
| Part Number | Type | Size | # of Positions | AWG |
|-------------|------------|------|----------------|-----|
| SQR320110-3 | Plug | 1 | 3 | 20 |
| SQR320120-3 | Receptacle | 1 | 3 | 20 |
| SQR322110-4 | Plug | 1 | 4 | 22 |
| SQR322120-4 | Receptacle | 1 | 4 | 22 |



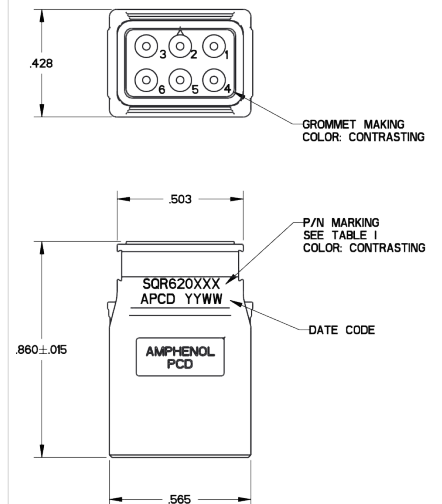
FrontFlange Mount Shell size 2



Receptacle Shell size 2



Plug Shell size 2



Amphenol Pcd Products



Backshells



Cable Solutions &
Cable Adapters
NEW



Relay Sockets



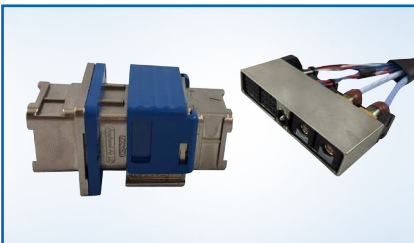
System
Attachments



Luminus Series



Junction Modules



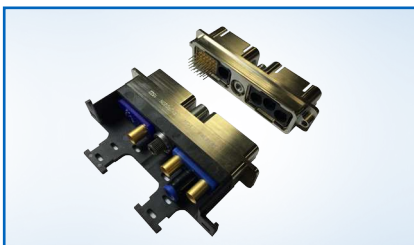
SIM



Pegasus Series
NEW



Circular



EN4644



Rugged Solutions



Military Audio
/Power