



Chipsmall Limited consists of a professional team with an average of over 10 year of expertise in the distribution of electronic components. Based in Hongkong, we have already established firm and mutual-benefit business relationships with customers from,Europe,America and south Asia,supplying obsolete and hard-to-find components to meet their specific needs.

With the principle of “Quality Parts,Customers Priority,Honest Operation,and Considerate Service”,our business mainly focus on the distribution of electronic components. Line cards we deal with include Microchip,ALPS,ROHM,Xilinx,Pulse,ON,Everlight and Freescale. Main products comprise IC,Modules,Potentiometer,IC Socket,Relay,Connector.Our parts cover such applications as commercial,industrial, and automotives areas.

We are looking forward to setting up business relationship with you and hope to provide you with the best service and solution. Let us make a better world for our industry!



## Contact us

Tel: +86-755-8981 8866 Fax: +86-755-8427 6832

Email & Skype: info@chipsmall.com Web: www.chipsmall.com

Address: A1208, Overseas Decoration Building, #122 Zhenhua RD., Futian, Shenzhen, China



# Trogon Dual-band Wi-Fi Antenna

Part No. SR42W009

lamiiANT<sup>®</sup>

Product Specification

## 1. Features

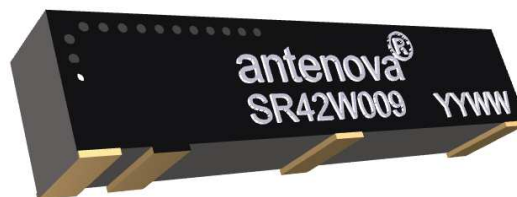
- Antenna for 2.4 – 2.5 GHz and 5.17 – 5.84 GHz applications: Wi-Fi<sup>®</sup> 802.11a/b/g/n/ac
- Works over a ground plane. No clearance required.
- Ideal for wearables.
- Maintains high performance on device: DFI (Designed For Integration)
- SMD mounting
- Supplied on Tape and Reel

## 2. Description

Trogon is intended for use with all dual-band Wi-Fi applications. Only requires a small ground plane and integrates into the corner with minimal PCB clearance area. Design centred on being part of the device and not designing the device around the antenna Ideal for single and MIMO antenna systems.

## 3. Applications

- Wearable devices
- Access Points
- Portable Devices
- PC-cards
- Game Consoles
- Set-Top-Box
- Network Devices
- MIMO Systems



## 4. Part Number

Trogona: SR42W009



## 5. General Data

|                         |                            |
|-------------------------|----------------------------|
| Product name            | Trogona                    |
| Part Number             | SR42W009                   |
| Frequency               | 2.4-2.5 GHz; 5.17-5.84 GHz |
| Polarization            | Linear                     |
| Operating temperature   | -40°C to 140°C             |
| Impedance with matching | 50 Ω                       |
| Weight                  | < 0.5 g                    |
| Antenna type            | SMD                        |
| Dimensions              | 19.3 x 3.3 x 4.4 (mm)      |

## 6. RF Characteristics

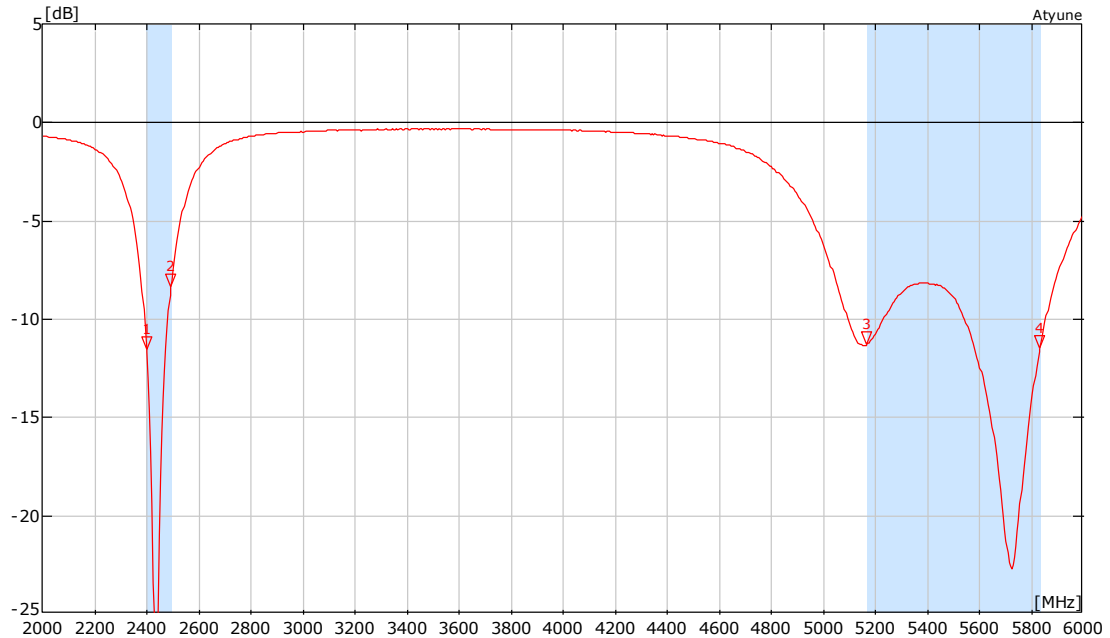
|                     | Typical performance | Conditions   |
|---------------------|---------------------|--|
| Peak gain           | 5.03dBi             | <b>2.4 – 2.5 GHz frequency range</b><br>All data measured on<br>Antenna's evaluation PCB<br>Part No. SR42W009-U1 |
| Average gain        | -0.6dBi             |  |
| Average efficiency  | >70%                |  |
| Maximum return loss | -7.0dB              |  |
| Maximum VSWR        | 1.5:1               |  |

|                     | Typical performance | Conditions   |
|---------------------|---------------------|--|
| Peak gain           | 5.32dBi             | <b>5.175 – 5.835 GHz frequency range</b><br>All data measured on<br>Antenna's evaluation PCB<br>Part No. SR42W009-U1 |
| Average gain        | -2.2dBi             |  |
| Average efficiency  | >60%                |  |
| Maximum return loss | -7.0dB              |  |
| Maximum VSWR        | 2.70:1              |  |

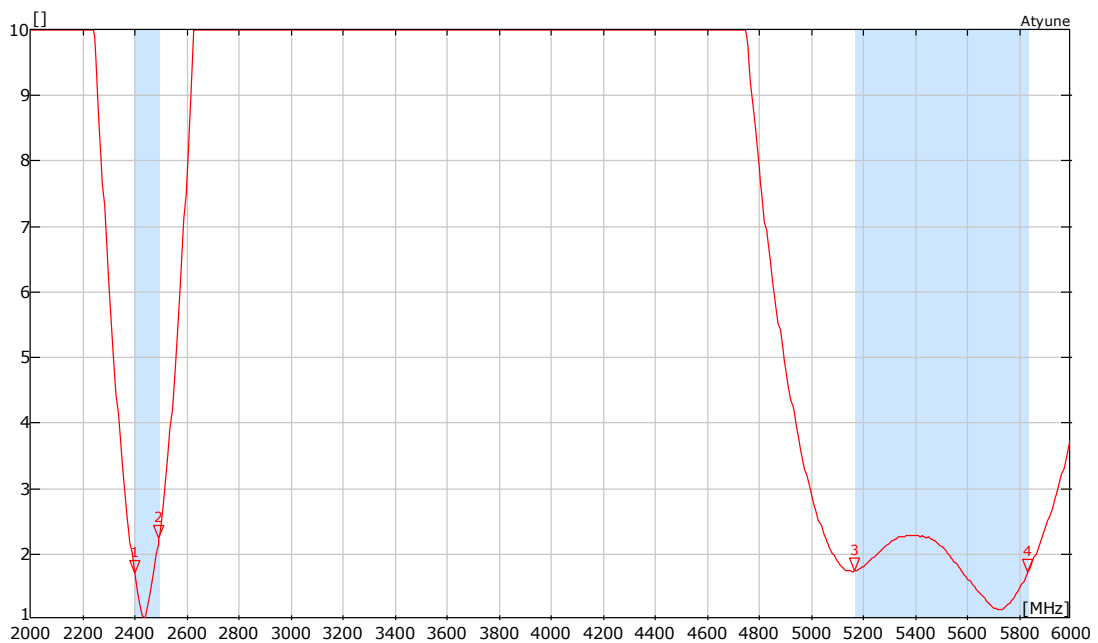
Antennas for Wireless M2M Applications

## 7. RF Performance

### 7.1 Return Loss



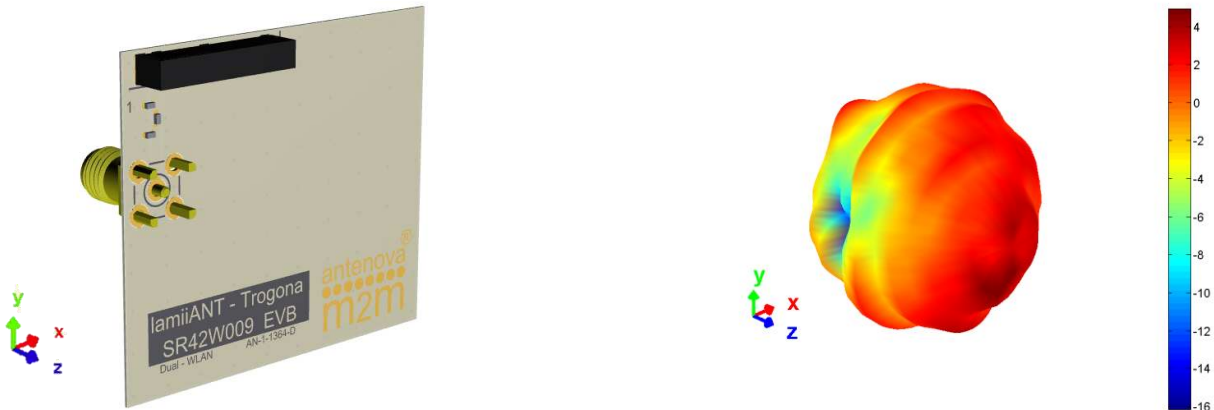
### 7.2 VSWR



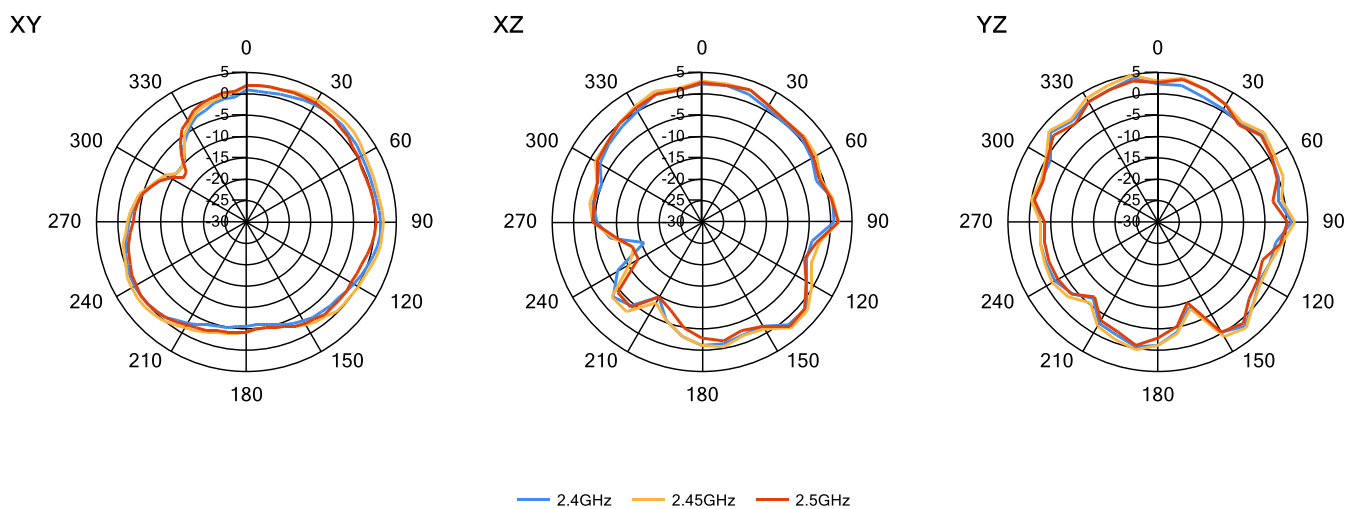


## 7.3 Antenna patterns

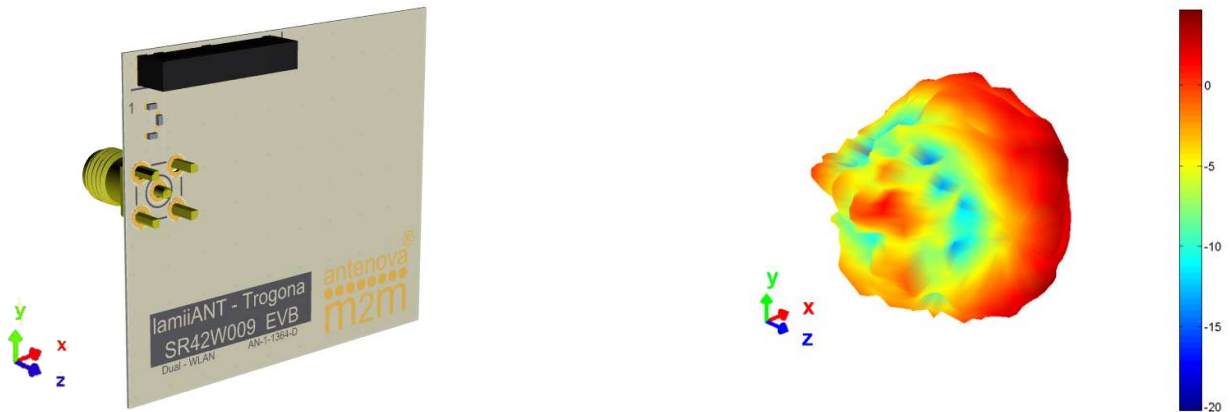
### 7.3.1 2400 MHz – 2500 MHz



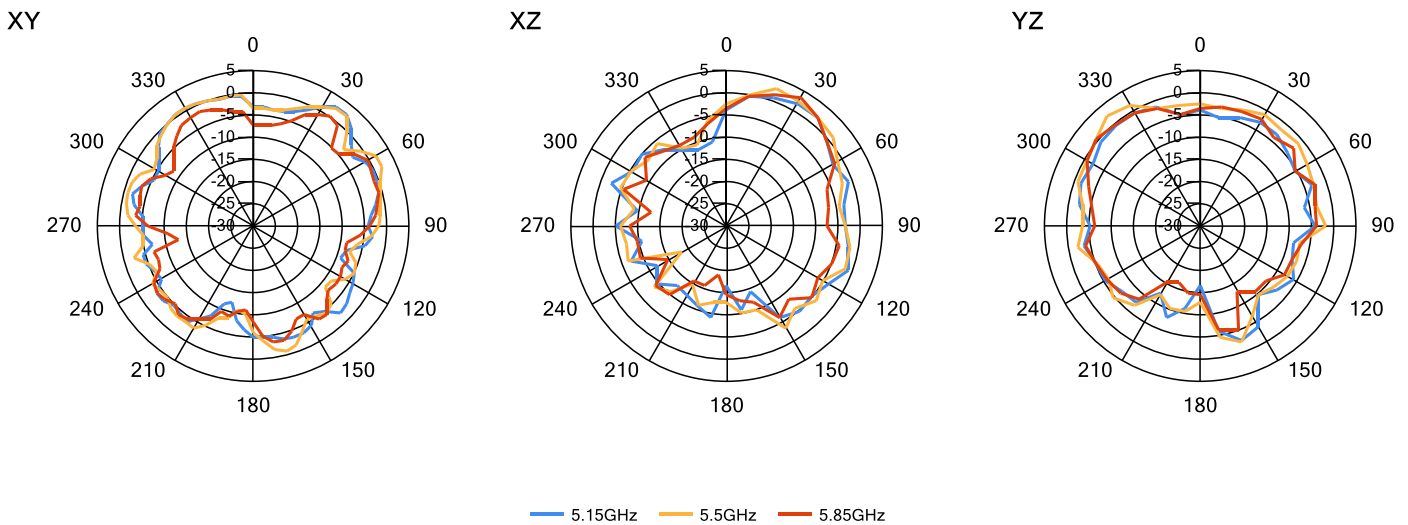
**3D pattern at 2.45GHz**  
*Drag to rotate pattern and PCB by using Adobe Reader  
(Click to Activate)*



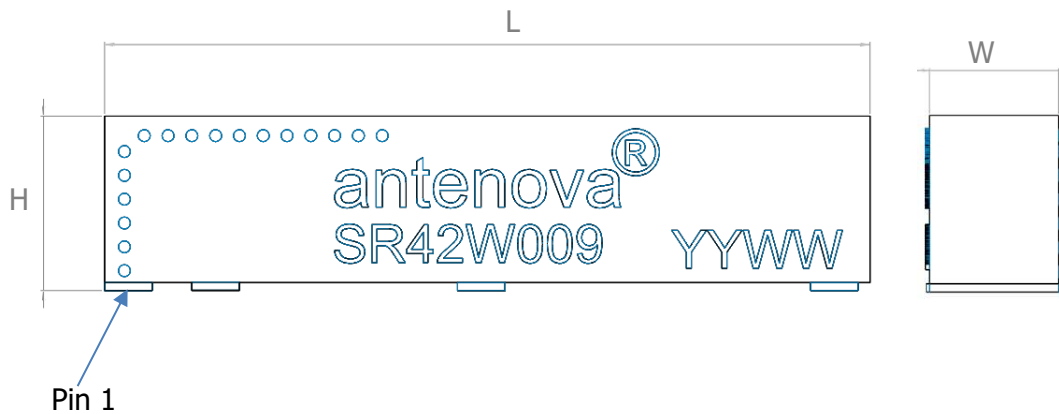
### 7.3.2 4900 MHz – 5900 MHz



**3D pattern at 5.5GHz**  
*Drag to rotate pattern and PCB by using Adobe Reader  
(Click to Activate)*



## 8. Antenna Dimensions

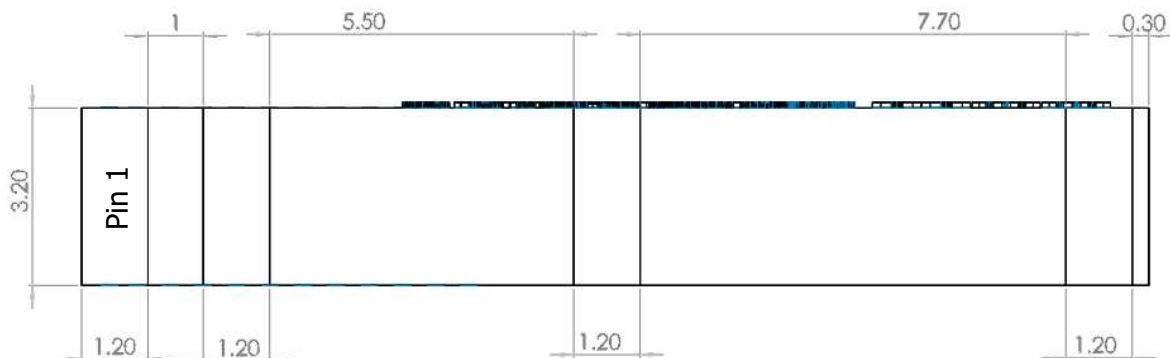


| L      | W     | H      |
|--------|-------|--------|
| Length | Width | Height |
| 19.3   | 3.3   | 4.4    |

All dimensions in mm

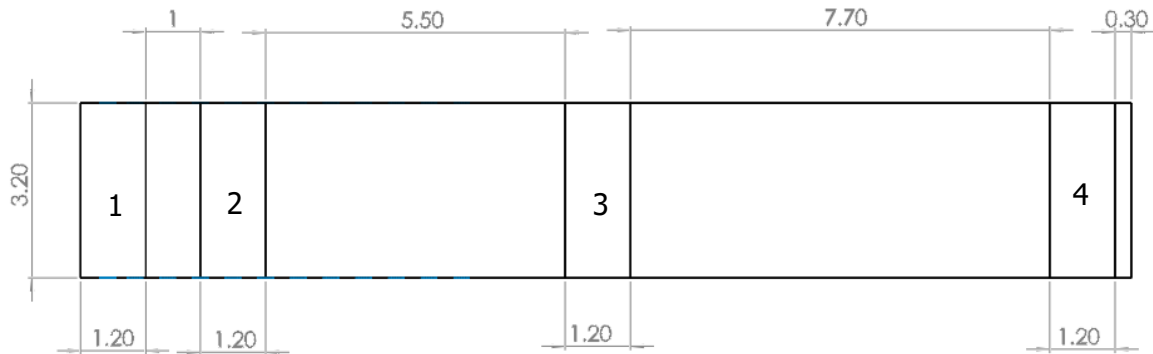
### Bottom side dimensions

4 solder pads (3.2 x 1.2 mm)



## 9.0 Antenna footprint

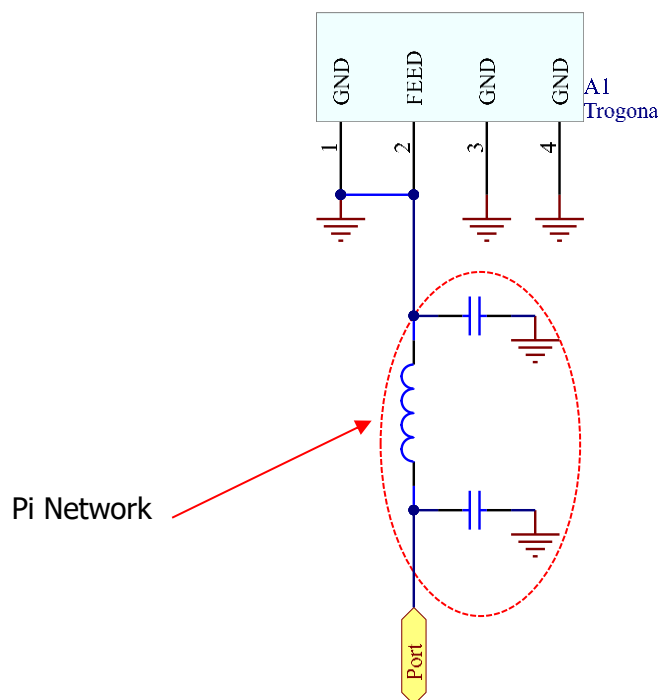
The recommended host PCB footprint is below.



4 copper pads all 3.2 x 1.2 (mm)

## 10.0 Schematic

The circuit for the antenna and the matching components is below. The RF feed connection and GND connections are critical to the function of the antenna, and must be followed as shown. This circuit can be used for the circuit capture of the host PCB. Pin 2 the feed is connected to Pin 1 (GND) as shown below here and is essential to the antenna function.





## 11. Electrical Interface

### 11.1 Transmission Line

All transmission lines should be designed to have a characteristic impedance of 50Ω.

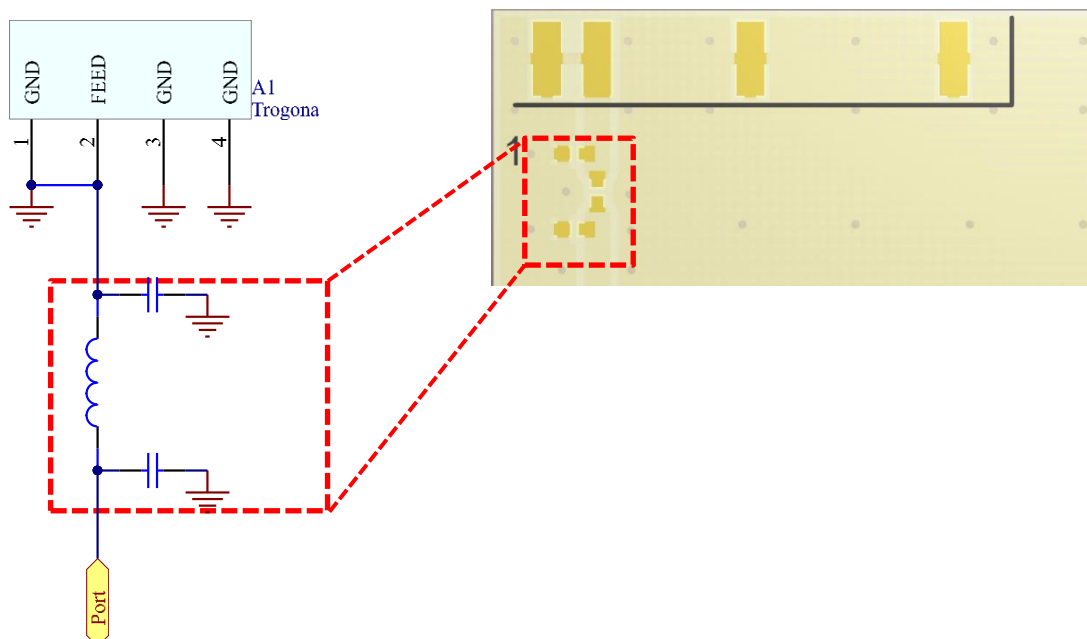
- The length of the transmission lines should be kept to a minimum
- Any other parts of the RF system like transceivers, power amplifiers, etc, should also be designed to have an impedance of 50 Ω

Once the material for the PCB has been chosen (PCB thickness and dielectric constant), a coplanar transmission line can easily be designed using any of the commercial software packages for transmission line design. For the chosen PCB thickness, copper thickness and substrate dielectric constant, the program will calculate the appropriate transmission line width and gaps on either side of the feed.

### 11.2 Matching Circuit

The antenna requires a matching circuit that must be optimized for each product. The matching circuit will require up to three components and the following pad layout should be designed into the device so the correct circuit can be installed.

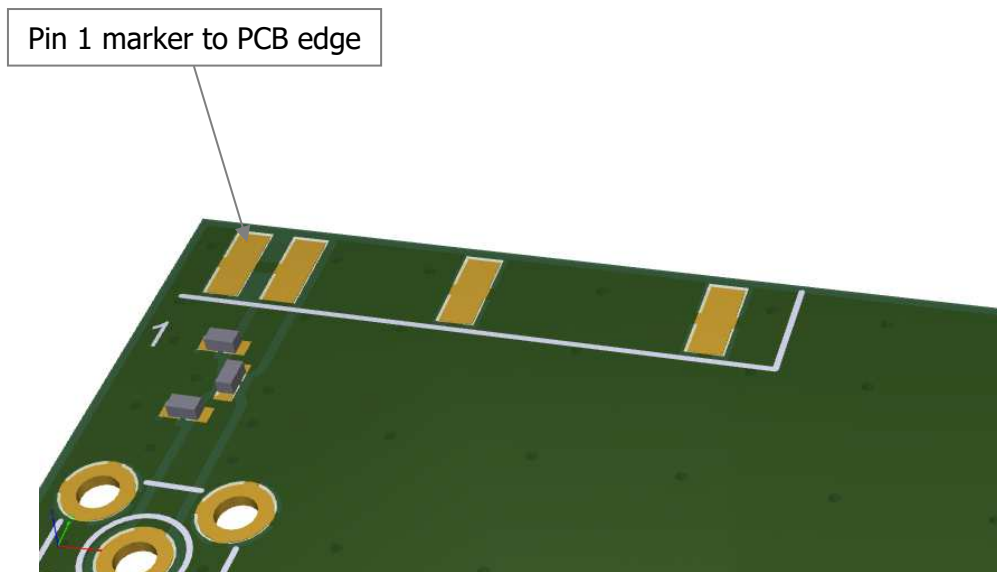
The Pi matching network must be placed close to the antenna feed to ensure it is more effective in tuning the antenna.



## 12.0 Antenna Integration Guide

### 12.1 Antenna Placement

Whichever the host PCB size used, the antenna should be placed into the PCB corner. Ideally Pin 1 should be closest to the PCB edge.



## 12.2 Host PCB Layout

The host PCB must ensure the footprint meets the antenna specification. An example of the PCB layout shows the antenna footprint. The antenna uses solder mask defined pads.

Example host layout

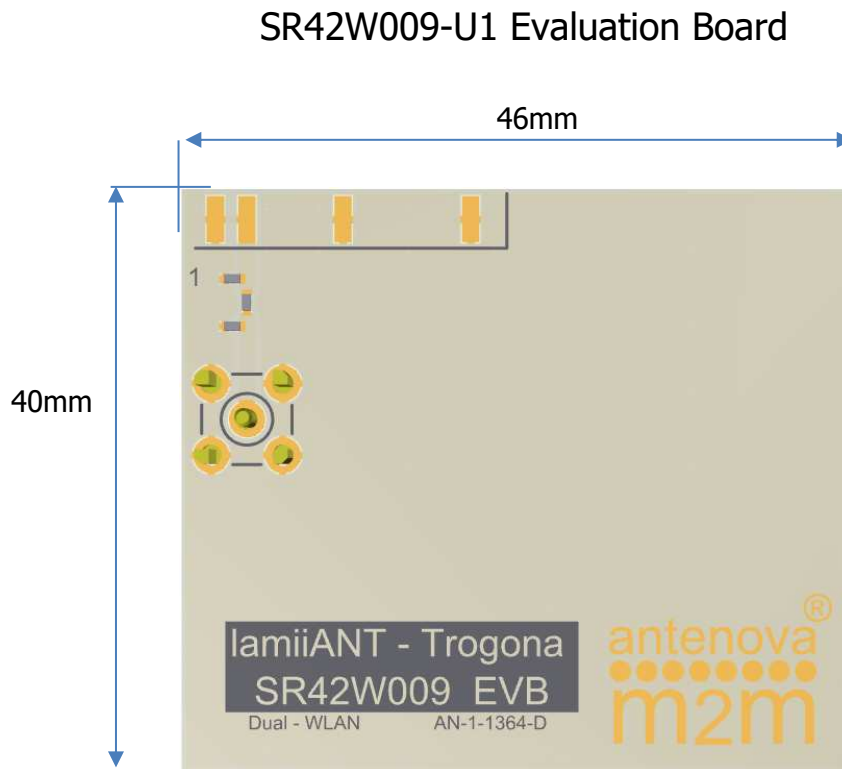


Below the footprint is shown again but without the solder mask. Pin 2 (feed) must be connected to pin 1 (GND) as shown here.



## 13.0 Reference Board

The reference board has been designed for evaluation purposes of SR42W009 and includes a SMA female connector.



To order a reference board contact [sales@antenova-m2m.com](mailto:sales@antenova-m2m.com).  
Please state if single or two antenna EVB is required.

## 14. Soldering

This antenna is suitable for lead free soldering.

The reflow profile should be adjusted to suit the device, oven and solder paste, while observing the following conditions:

- The maximum temperature should not exceed 240 °C
- However for lead free soldering, a maximum temperature of 255 °C for no more than 20 seconds is permitted.
- The antenna should not be exposed to temperatures exceeding 120 °C more than 3 times during the soldering process.

## 15. Hazardous Material Regulation Conformance

The antenna has been tested to conform to RoHS requirements. A certificate of conformance is available from Antenova M2M's website.

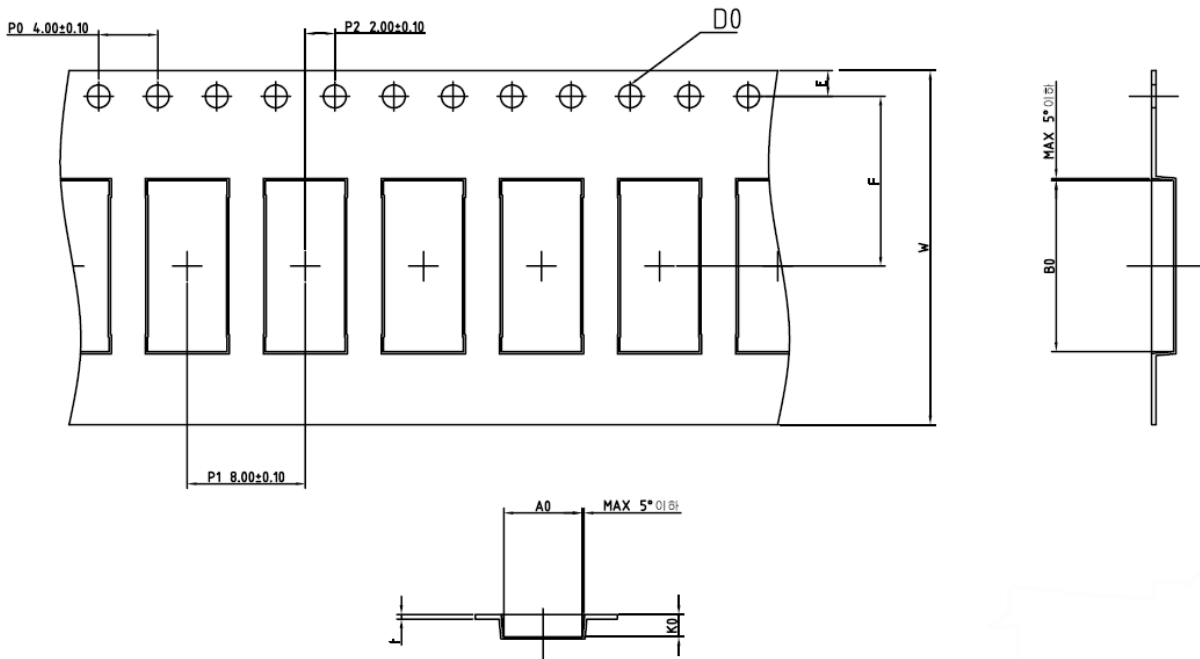
## 16. Packaging

### 16.1 Optimal Storage Conditions

|               |   |
|---------------|---|
| Temperature   | -10°C to 40°C   |
| Humidity      | Less than 75% RH  |
| Shelf life    | 24 Months   |
| Storage place | Away from corrosive gas and direct sunlight                                 |
| Packaging     | Reels should be stored in unopened sealed manufacturer's plastic packaging. |

**Note: Storage of open reels of antennas is not recommended due to possible oxidization of pads on antennas. If short term storage is necessary, then it is highly recommended that the bag containing the antenna reel is re-sealed and stored in like storage conditions as in above table.**

## 16.2 Tape Characteristics



| Do        | Ao         | Bo           | P0         | P1         | P2         |
|-----------|------------|--------------|------------|------------|------------|
| 1.55 +0.1 | 5.30 ± 0.1 | 11.605 ± 0.1 | 4.00 ± 0.1 | 8.00 ± 0.1 | 2.00 ± 0.1 |

| E          | F           | W           | K0         |
|------------|-------------|-------------|------------|
| 1.75 ± 0.1 | 11.50 ± 0.1 | 24.00 ± 0.3 | 1.40 ± 0.1 |

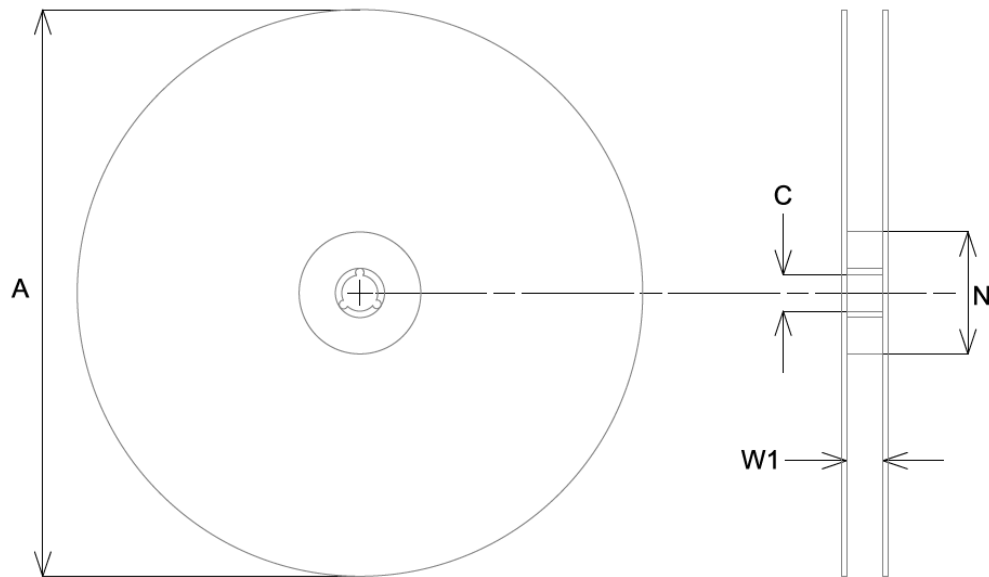
Dimensions in mm

### Notes:

- Sprocket hole pitch cumulative tolerance =  $\pm 0.2$  per 10
- Chamber not to exceed 1mm in 100mm
- Ao and Bo measured on a plane 0.1mm above the bottom of the pocket.
- K0 measured from a plane on the inside bottom of the pocket to the top surface of the carrier.



### 16.3 Reel Dimensions

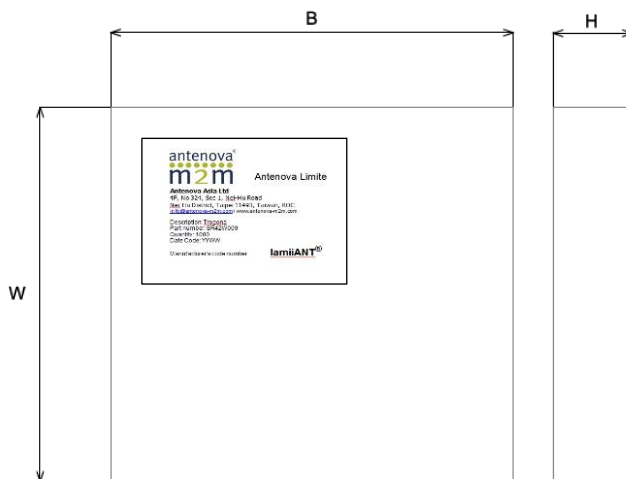


| A           | C          | N    | W1   |
|-------------|------------|------|------|
| 178.0 ± 2.0 | 13.2 ± 0.5 | 60.0 | 14.0 |

All dimensions in mm

| Quantity        | Leading Space    | Trailing Space   |
|-----------------|------------------|------------------|
| 1000 pcs / reel | 16 blank holders | 24 blank holders |

## 16.4 Box Dimensions

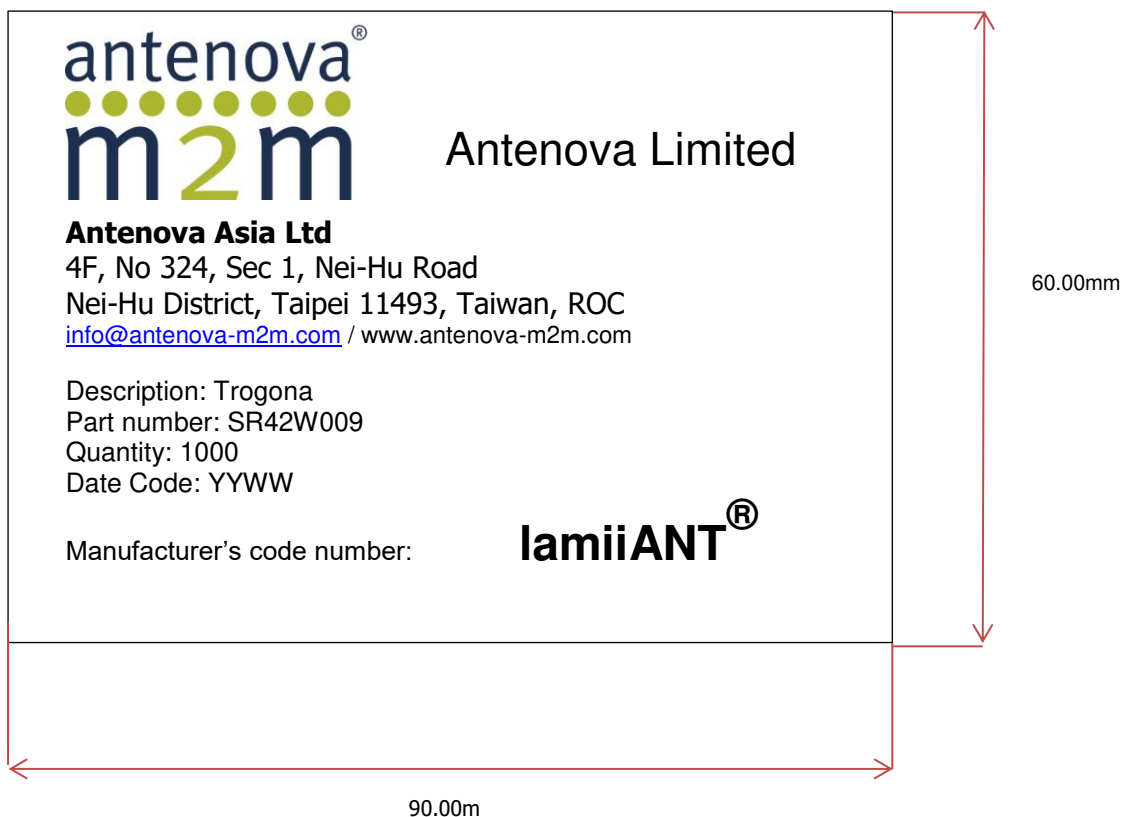


| Width (W) | Breadth (B) | Thickness (H) |
|-----------|-------------|---------------|
| 203mm     | 188mm       | 40mm          |

## 16.5 Bag Properties

Reels are supplied in protective plastic packaging.

## 16.6 Reel Label Information





[www.antenova-m2m.com](http://www.antenova-m2m.com)

#### Corporate Headquarters

Antenova Limited  
2<sup>nd</sup> Floor Titan Court  
3 Bishop Square  
Hatfield  
AL10 9NA  
UK

**Tel:** +44 1223 810600

**Email:** [sales@antenova-m2m.com](mailto:sales@antenova-m2m.com)

#### North America Headquarters

Antenova Limited  
100 Brush Creek Road, Suite 103,  
Santa Rosa  
California 95404  
USA

**Tel:** +1 707 890 5202

**Email:** [sales@antenova-m2m.com](mailto:sales@antenova-m2m.com)

#### Asia Headquarters

Antenova Asia Limited  
4F, No. 324, Sec. 1, Nei-Hu Road  
Nei-Hu District  
Taipei 11493  
Taiwan, ROC

**Tel:** +886 (0) 2 8797 8630

**Fax:** +886 (0) 2 8797 6890

**Email:** [sales@antenova-m2m.com](mailto:sales@antenova-m2m.com)

**Copyright© Antenova Ltd.** All Rights Reserved. Antenova®, Antenova M2M®, gigaNOVA®, the Antenova product family names, and the Antenova and Antenova M2M logos are trademarks and/or registered trademarks of Antenova Ltd. Any other names and/or trademarks belong to their respective companies.

The materials provided herein are believed to be reliable and correct at the time of printing. Antenova does not warrant the accuracy or completeness of the information, text, graphics or other items contained within this information. Antenova further assumes no responsibility for the use of this information, and all such information shall be entirely at the user's risk.



Certificate No: 4598

Antennas for Wireless M2M Applications