



Chipsmall Limited consists of a professional team with an average of over 10 year of expertise in the distribution of electronic components. Based in Hongkong, we have already established firm and mutual-benefit business relationships with customers from,Europe,America and south Asia,supplying obsolete and hard-to-find components to meet their specific needs.

With the principle of “Quality Parts,Customers Priority,Honest Operation,and Considerate Service”,our business mainly focus on the distribution of electronic components. Line cards we deal with include Microchip,ALPS,ROHM,Xilinx,Pulse,ON,Everlight and Freescale. Main products comprise IC,Modules,Potentiometer,IC Socket,Relay,Connector.Our parts cover such applications as commercial,industrial, and automotives areas.

We are looking forward to setting up business relationship with you and hope to provide you with the best service and solution. Let us make a better world for our industry!



## Contact us

Tel: +86-755-8981 8866 Fax: +86-755-8427 6832

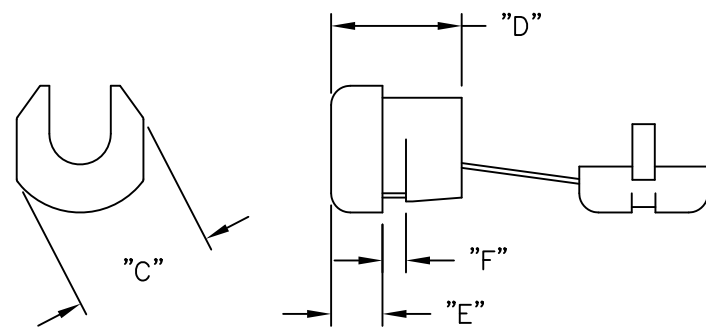
Email & Skype: info@chipsmall.com Web: www.chipsmall.com

Address: A1208, Overseas Decoration Building, #122 Zhenhua RD., Futian, Shenzhen, China

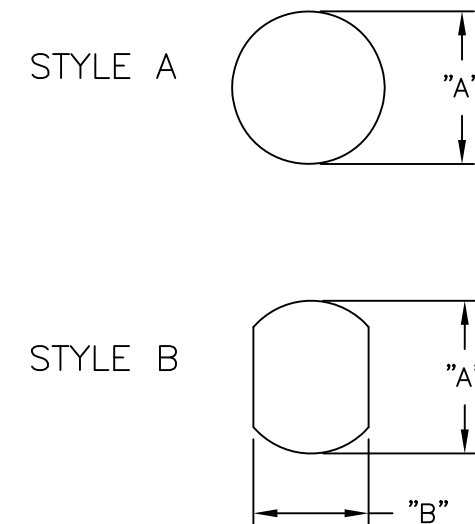


PART NUMBER	WIRES ACCOMMODATED	REF CABLE STYLE	APPROX. WIRE SIZE	MOUNTING HOLES		C REF.	D	E REF.	F MAX. PANEL THICKNESS				
				A	B								
SRB-F-1	SPT-1	FLAT	3.0 X 5.6 (.118 X .220)	9.5 (.374)	8.7 (.343)	10.8 (.425)	10.4 (.409)	4 (.157)	1.6 (.063)				
SRB-F-3				11 (.433)	9.9 (.390)	12.1 (.476)		3.2 (.126)	2.5 (.098)				
SRB-F-6						12.5 (.492)							
SRB-F-8	SPT-2		3.71 X 7.6 (.146 X .299)	12.7 (.500)	11.8 (.465)	13.9 (.547)	10.5 (.413)	4 (.157)	1.6 (.063)				
SRB-F-9			3.8 X 7.6 (.150 X .299)	13.1 (.516)					2.5 (.098)				
			3.71 X 7.6 (.146 X .299)	12.7 (.500)									
	3.8 X 7.6 (.150 X .299)		13.1 (.516)										
SRB-R-1	SVI		ROUND	6.4 (.252)	12.7 (.500)	11.5 (.453)	14.2 (.559)	10.9 (.429)	4.2 (.165)	1.6 (.063)			
	SVT			7.4 (.291)	13.1 (.516)					2.5 (.098)			
SRB-R-2	SVI	6.4 (.252)		12.7 (.500)									
	SVT	7.4 (.291)		13.1 (.516)									
SRB-R-3	SJT #18/3	7.6 (.299)		15.9 (.626)	14 (.551)	17.8 (.701)	14.8 (.583)	5.6 (.220)	1.6 (.063)				
SRB-R-4									17.6 (.693)	3.2 (.126)			
SRB-R-7	SJT #16/3	8.2 - 9.2 (.323 - .362)				17.8 (.701)			1.6 (.063)				
SRB-R-8						17.3 (.681)			3.2 (.126)				
SRB-R-9	SJT #14/3	9.2 - 10.5 (.362 - .413)		19 (.748)	16.5 (.650)	21.5 (.847)	19.1 (.750)	7.8 (.307)	1.6 (.063)				
		11 (.433)		19.8 (.780)					3.2 (.126)				
SRB-R-10		9.2 - 10.5 (.362 - .413)	19 (.748)	21.7 (.854)					19.4 (.764)				
		11 (.433)	19.8 (.780)										

BUSHING DIMENSIONS



MOUNTING HOLE



- NOTES:  
 1. MATERIAL: NYLON 6/6 UL 94 V-2 (RMS-315).  
 2. COLOR: BLACK.  
 3. UL LISTED, CARD # E107293

E	SEE CO 200682 FOR CHANGES	SK 06.16.2011	TITLE: STRAIN RELIEF BUSHINGS				DWG IN mm (IN)	FINAL	PART #	PRINT TYPE
D	SEE CO 200560 FOR CHANGES	SK 07/23/10								
C	SEE CO 200439 FOR CHANGES	SK 09.17.09	TOLERANCES UNLESS NOTED	FILE # SRB	DWN: R.D.G.	APP: R.D.G.	SEE TABLE	CA		
B	SEE CO 200294 FOR CHANGES	SK 12.12.08	10 ≤ X ≤ 30 = ±0.3	MAT'L: SEE NOTES	DT: 04/20/06	CHKD: S.J.				
A	RELEASED FOR PRODUCTION (SEE ECN 1161)	S.J. 05.02.06	30 ≤ X ≤ 50 = ±0.5	RE: RICHCO, INC.	RICHCO INC. ENG@RICHCO-INC.COM (773) 539-4060					
REV	DESCRIPTION	ENGR DATE	ANG = ±1°							