



Chipsmall Limited consists of a professional team with an average of over 10 year of expertise in the distribution of electronic components. Based in Hongkong, we have already established firm and mutual-benefit business relationships with customers from,Europe,America and south Asia,supplying obsolete and hard-to-find components to meet their specific needs.

With the principle of "Quality Parts,Customers Priority,Honest Operation,and Considerate Service",our business mainly focus on the distribution of electronic components. Line cards we deal with include Microchip,ALPS,ROHM,Xilinx,Pulse,ON,Everlight and Freescale. Main products comprise IC,Modules,Potentiometer,IC Socket,Relay,Connector.Our parts cover such applications as commercial,industrial, and automotives areas.

We are looking forward to setting up business relationship with you and hope to provide you with the best service and solution. Let us make a better world for our industry!



Contact us

Tel: +86-755-8981 8866 Fax: +86-755-8427 6832

Email & Skype: info@chipsmall.com Web: www.chipsmall.com

Address: A1208, Overseas Decoration Building, #122 Zhenhua RD., Futian, Shenzhen, China

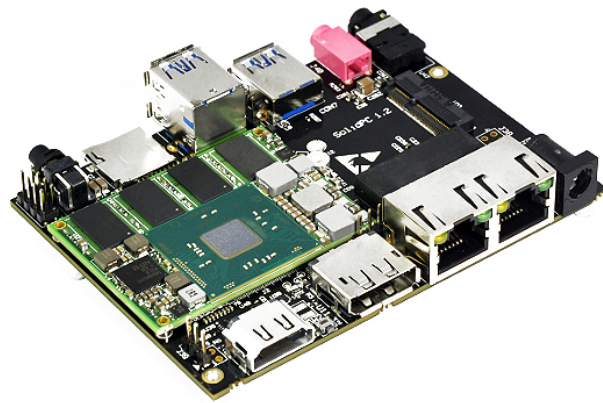




Intel Braswell

SolidPC Q4

Carrier Board for Braswell SoM (System-On-Module)
Rev 1.2



Simple. Robust. Computing Solutions

SolidRun Ltd.

3 Dolev st., 3rd floor, P.O. Box 75

Migdal Tefen 2495900, Israel.

www.solid-run.com

Overview

Embedding Intel processors is easier than ever, thanks to the SolidPC platform – the 1st of a family of SBCs. SolidRun’s SolidPC Q4 single-board-computer (SBC) and Braswell-embedded MicroSoM™ serves as an ideal gateway between Intel’s powerful Atom® and Pentium® SoCs and your application – reducing complexity and simplifies the development process. Get your Windows IoT or Embedded Linux system out the door... fast.

SolidPC Q4 Highlighted Features

- ✿ Based on Intel’s Braswell family
- ✿ Up to 8GB Memory size
- ✿ Deployment and development ready
- ✿ Optional industrial metal enclosure, perfect for OEMs
- ✿ Feature rich
- ✿ Broad SW support

System Specifications

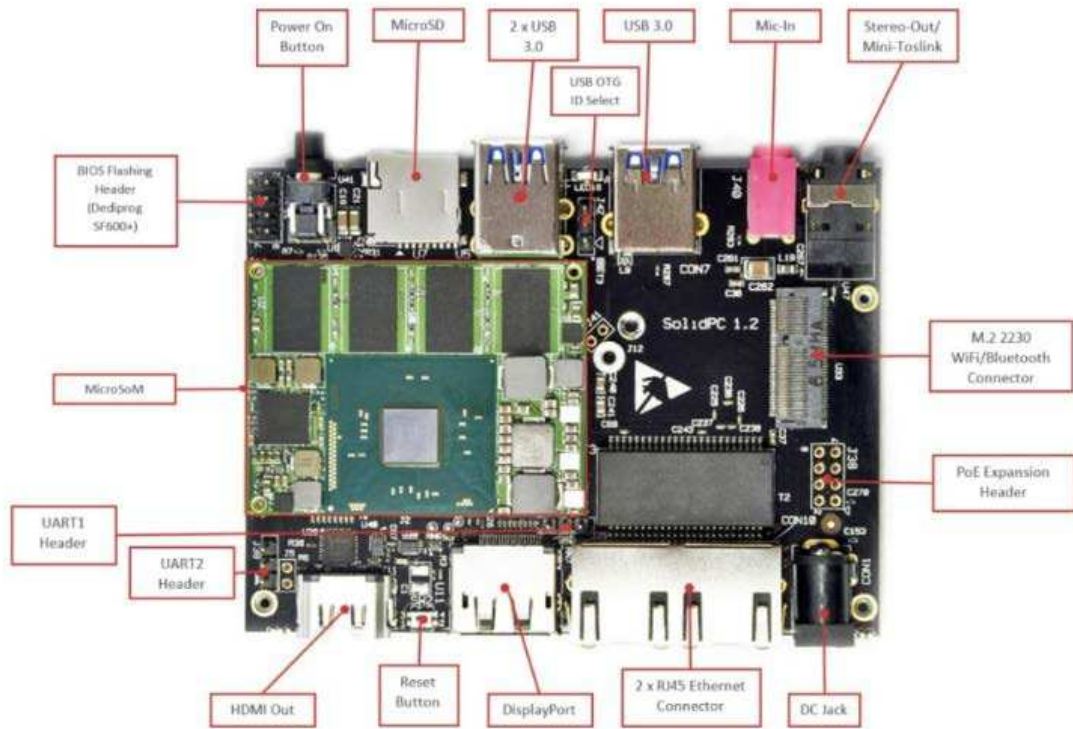
SolidPC Q4	
SoM Model	Quad Core Intel Atom E8000 Quad Core Intel Pentium N3710
Memory and Storage	Up to 8GB DDR3* uSD UHS-1 Support eMMC** M.2 2242 SSD Connector
Connectivity	Displayport HDMI 1.4b (up to 4k30fps) 2xRJ45 with PoE option 3xUSB 3.0 Host M.2 2230 Connector for WiFi/BT 2x UART Headers
I/O and Misc	Power on Button Reset Button Infra-Red Indication LEDs
Power	DC input 7V-21V Battery for RTC
Software	Windows, Linux, Android
Dimensions (WxL)	100mmx80mm
Enclosure	Optional Metal Enclosure

(*) Based on the SoM model.

(**) Assembly option on the SoM.

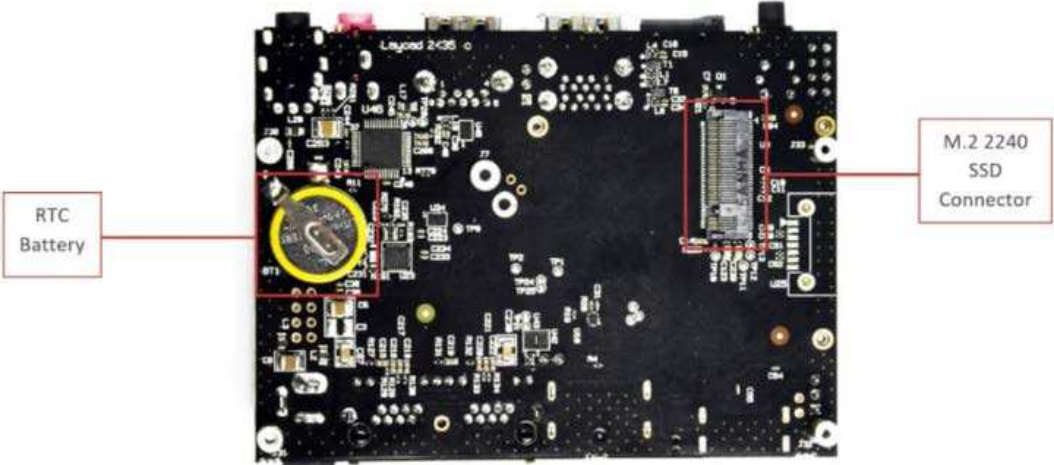
Interfaces

Top View



Interfaces

Bottom View



Available SKUs for SolidPC Q4

SKU	Description
SRSPC0E000CV12	SolidPC Q4 No eMMC Com. Temp R1.2

Safety Notice

- a. This device is to be used with Certified Power adaptor with output rated 12VDC, 2.5A. Power adapter must meet Limited power source (LPS) requirements.
- b. Power adapter must meet local safety standards and requirements based on product intended use.
- c. Power adapter must meet Operating environment conditions as specified above.

Disposal

Follow local regulations regarding disposal of the product. Dispose of your product in accordance with local regulations. In some areas, the disposal of these items in household or business trash may be prohibited.

Help us protect the environment- recycle!

IMPORTANT NOTICE – Please Read Carefully

No warranty of accuracy is given concerning the contents of the information contained in this document. To the extent permitted by law no liability (including liability to any person by reason of negligence) will be accepted by SolidRun Ltd. Or its employees for any direct or indirect loss or damage caused by omissions from or inaccuracies in this document.

SolidRun Ltd. Reserves the right to change details in this publication without notice

Product and company names herein may be the trademarks of their respective owners.

Information in this document supersedes and replaces information previously supplied in any prior versions of this document.

Support

For technical support please visit:

Our Wiki – <http://wiki.solid-run.com/>

Our Forums - <http://forum.solid-run.com/>

For direct support please contact us at: support@solid-run.com

Documentation

Additional documentation available at:

<http://wiki.solid-run.com/doku.php?id=products:ibx:documents>