



Chipsmall Limited consists of a professional team with an average of over 10 year of expertise in the distribution of electronic components. Based in Hongkong, we have already established firm and mutual-benefit business relationships with customers from,Europe,America and south Asia,supplying obsolete and hard-to-find components to meet their specific needs.

With the principle of “Quality Parts,Customers Priority,Honest Operation,and Considerate Service”,our business mainly focus on the distribution of electronic components. Line cards we deal with include Microchip,ALPS,ROHM,Xilinx,Pulse,ON,Everlight and Freescale. Main products comprise IC,Modules,Potentiometer,IC Socket,Relay,Connector.Our parts cover such applications as commercial,industrial, and automotives areas.

We are looking forward to setting up business relationship with you and hope to provide you with the best service and solution. Let us make a better world for our industry!



Contact us

Tel: +86-755-8981 8866 Fax: +86-755-8427 6832

Email & Skype: info@chipsmall.com Web: www.chipsmall.com

Address: A1208, Overseas Decoration Building, #122 Zhenhua RD., Futian, Shenzhen, China



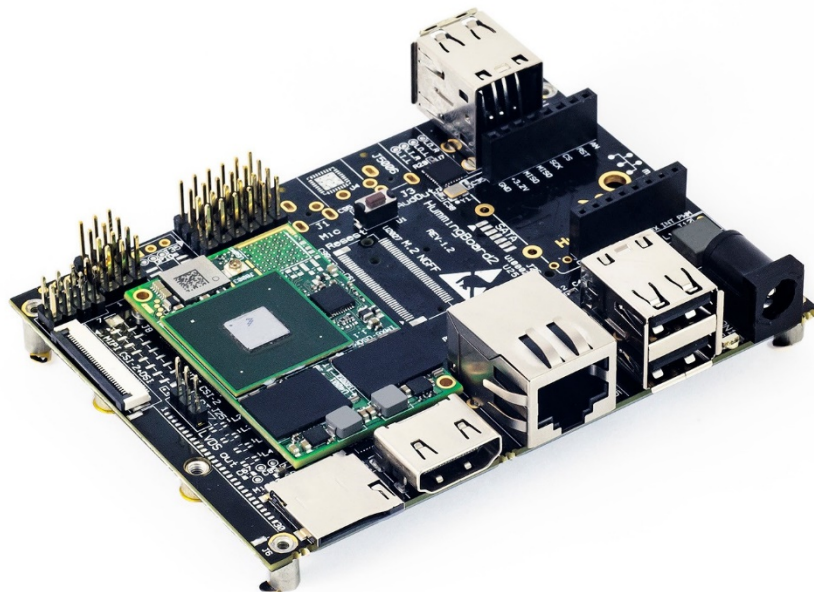


NXP-Freescale i.MX6

HummingBoard Gate

Carrier Board for iMX6 SoM (System-On-Module)

Rev 1.2



Simple. Robust. Computing Solutions

SolidRun Ltd.

3 Dolev st., 3rd floor, P.O. Box 75

Migdal Tefen 2495900, Israel.

www.solid-run.com

Overview

HummingBoard-Gate is the first SBC to include an integrated mikroBUS™ socket offering an easy hardware configuration to MikroElektronika's wide range of click boards™ add-on modules. The mikroBUS™ pinout and the click board ecosystem is especially suitable for developers who are working on multi-purpose, modular products.

HummingBoard Gate Highlighted Features

- ✿ Based on NXP's iMX6 Single to Quad Core
- ✿ Up to 2GB DDR3
- ✿ Featuring mikroBUS, perfect for quick demo / proof of concept
- ✿ Robust design

System Specifications

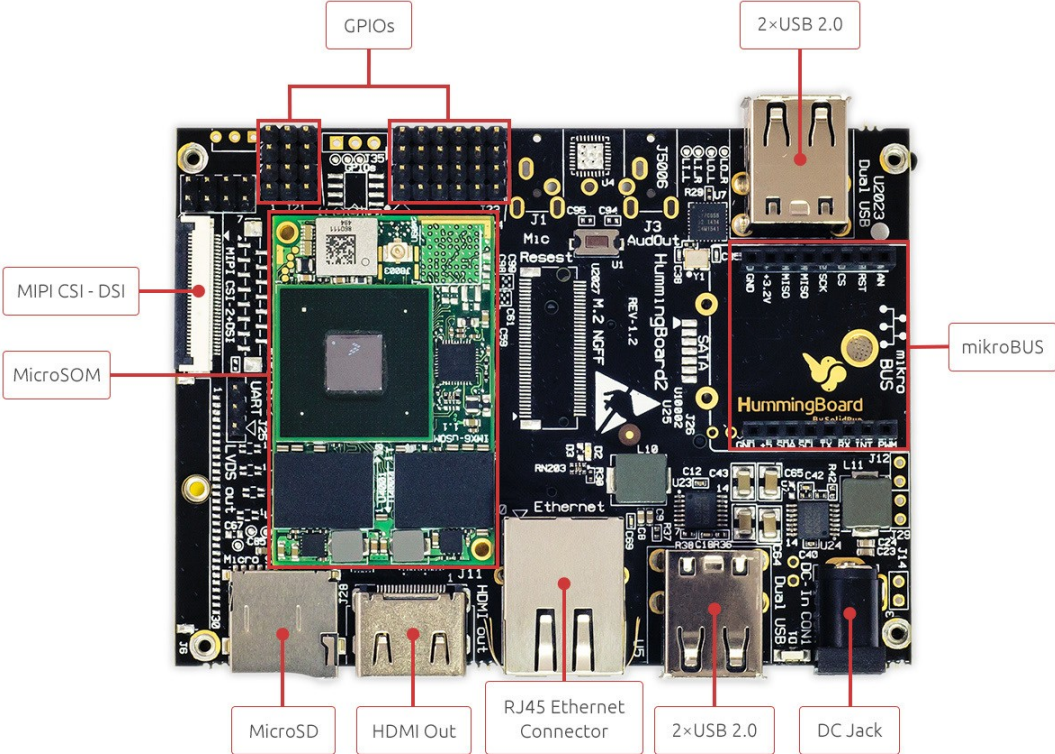
HummingBoard Gate	
SoM Model	i.MX6 based Solo to Quad Core SoM
Memory and Storage	Up to 2GB DDR3 uSD M.2 (2242)*
Connectivity	1×RJ-45** 4×USB 2.0 mPCIe with SIM card holder
Media	HDMI-Out MIPI-CSI-2 and MIPI-DSI Parallel Camera (on GPIO header)
I/O	Reset Button, 36 pins GPIO Header RTC with battery mikroBUS click interface
Power	7V-36V, 5.5mm in (Twist and Lock mechanism)
Software	Linux
Dimensions (WxL)	102mm×69mm
Enclosure	Optional Metal Enclosure

(*) Note that due to internal i.MX6 buses the 1000Mbps interface speed is limited to 470Mbps.

(**) 1000Mbps link is limited to 470Mbps actual bandwidth due to internal chip buses limitation.

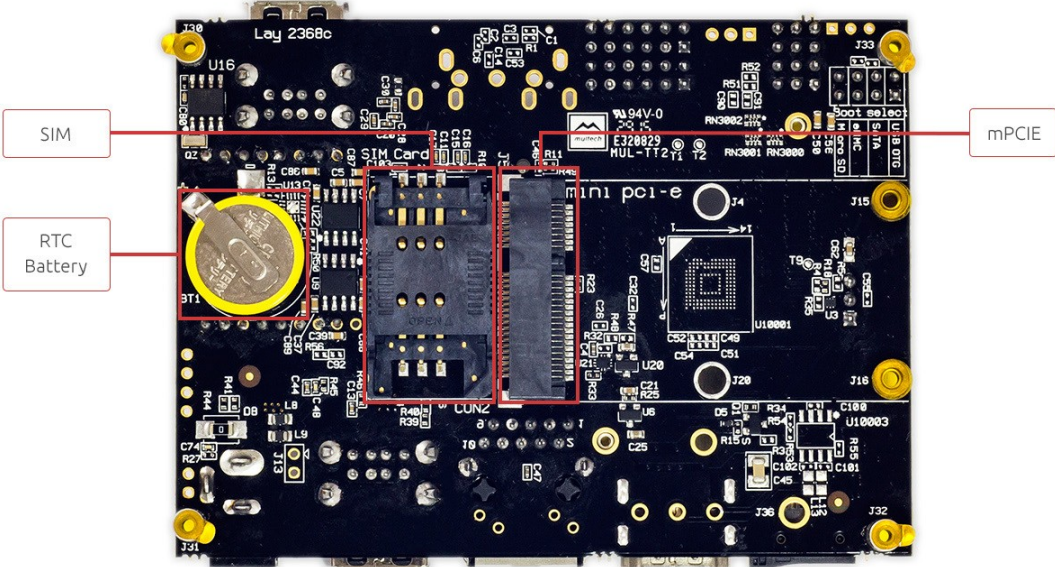
Interfaces

Top View



Interfaces

Bottom View



Available SKUs for HummingBoard Gate

SKU	Description
SRHBCGE000CV12	HummingBoard Gate No eMMC Com. Temp R1.2
SRHBCGE000IV12	HummingBoard Gate No eMMC Ind. Temp R1.2

Safety Notice

- a. This device is to be used with Certified Power adaptor with output rated 12VDC, 1.5A. Power adapter must meet Limited power source (LPS) requirements.
- b. Power adapter must meet local safety standards and requirements based on product intended use.
- c. Power adapter must meet Operating environment conditions as specified above.

Disposal

Follow local regulations regarding disposal of the product. Dispose of your product in accordance with local regulations. In some areas, the disposal of these items in household or business trash may be prohibited.

Help us protect the environment- recycle!

IMPORTANT NOTICE – Please Read Carefully

No warranty of accuracy is given concerning the contents of the information contained in this document. To the extent permitted by law no liability (including liability to any person by reason of negligence) will be accepted by SolidRun Ltd. Or its employees for any direct or indirect loss or damage caused by omissions from or inaccuracies in this document.

SolidRun Ltd. Reserves the right to change details in this publication without notice

Product and company names herein may be the trademarks of their respective owners.

Information in this document supersedes and replaces information previously supplied in any prior versions of this document.

Support

For technical support please visit:

Our Wiki – <http://wiki.solid-run.com/>

Our Forums - <http://forum.solid-run.com/>

For direct support please contact us at: support@solid-run.com

Documentation

Additional documentation available at:

<http://wiki.solid-run.com/doku.php?id=products:imx6:documents>