



Chipsmall Limited consists of a professional team with an average of over 10 year of expertise in the distribution of electronic components. Based in Hongkong, we have already established firm and mutual-benefit business relationships with customers from,Europe,America and south Asia,supplying obsolete and hard-to-find components to meet their specific needs.

With the principle of “Quality Parts,Customers Priority,Honest Operation,and Considerate Service”,our business mainly focus on the distribution of electronic components. Line cards we deal with include Microchip,ALPS,ROHM,Xilinx,Pulse,ON,Everlight and Freescale. Main products comprise IC,Modules,Potentiometer,IC Socket,Relay,Connector.Our parts cover such applications as commercial,industrial, and automotives areas.

We are looking forward to setting up business relationship with you and hope to provide you with the best service and solution. Let us make a better world for our industry!



Contact us

Tel: +86-755-8981 8866 Fax: +86-755-8427 6832

Email & Skype: info@chipsmall.com Web: www.chipsmall.com

Address: A1208, Overseas Decoration Building, #122 Zhenhua RD., Futian, Shenzhen, China



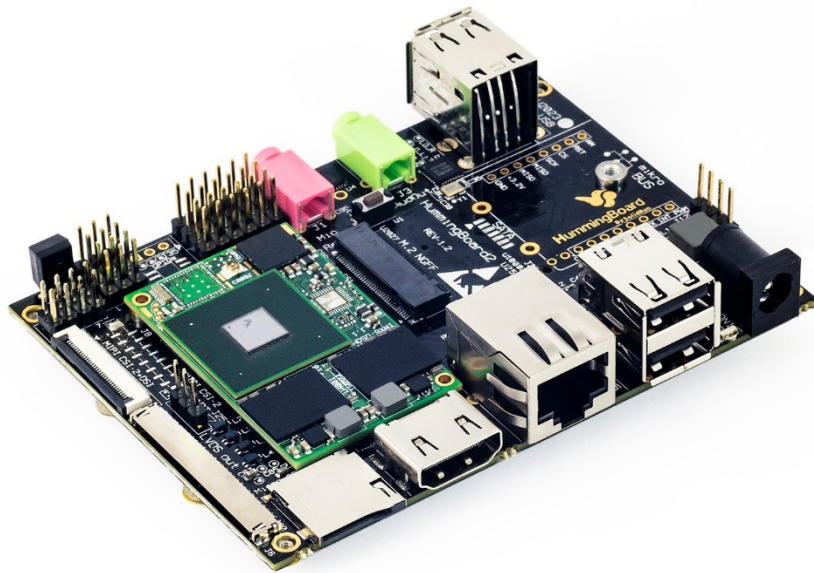


NXP-Freescale i.MX6

HummingBoard Edge

Carrier Board for iMX6 SoM (System-On-Module)

Rev 1.2



Simple. Robust. Computing Solutions

SolidRun Ltd.

3 Dolev st., 3rd floor, P.O. Box 75

Migdal Tefen 2495900, Israel.

www.solid-run.com

Overview

HummingBoard-Edge is the ideal M2M platform, it was developed to meet the B2B market demand for a high performance, reliable and innovative device. The brand new HummingBoard-Edge includes a whole new set of features such as eMMC (4GB), mPCIe (Half or Full Size) , wide range input (7V-36V) , optional metal enclosure and much more.

HummingBoard Edge Highlighted Features

- ✿ Based on NXP's iMX6 Single to Quad Core
- ✿ Up to 2GB DDR3
- ✿ Optimal IoT platform
- ✿ Feature rich

System Specifications

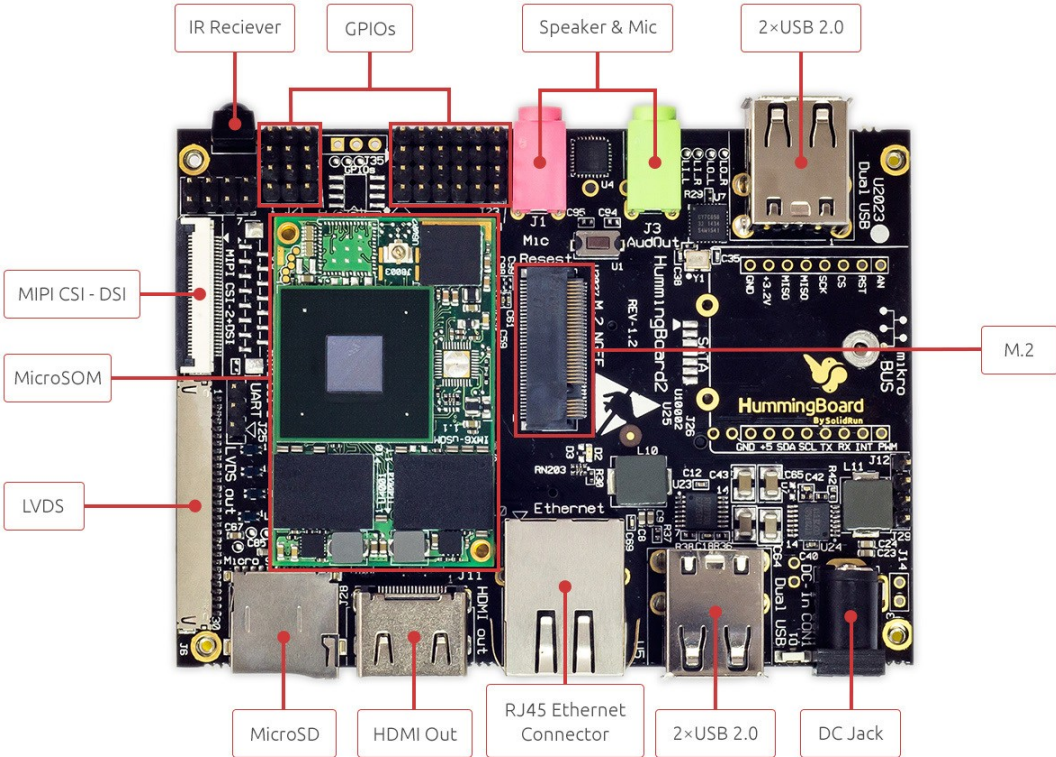
HummingBoard Edge	
SoM Model	i.MX6 based Solo to Quad Core SoM
Memory and Storage	Up to 2GB DDR3 uSD eMMC (8GB) M.2 (2242)*
Connectivity	1×RJ-45** 4×USB 2.0 mPCIe with SIM card holder
Media	HDMI-Out MIPI-CSI-2 and MIPI-DSI Parallel Camera (on GPIO header) LVDS Analog Audio
I/O	Reset Button 36 pins GPIO Header RTC with battery IR
Power	7V-36V, 5.5mm in (Twist and Lock mechanism)
Software	Linux
Dimensions (WxL)	102mm×69mm
Enclosure	Optional Metal Enclosure

(*) Supported with uSoM i2eX and above.

(**) 1000Mbps link is limited to 470Mbps actual bandwidth due to internal chip busses limitation.

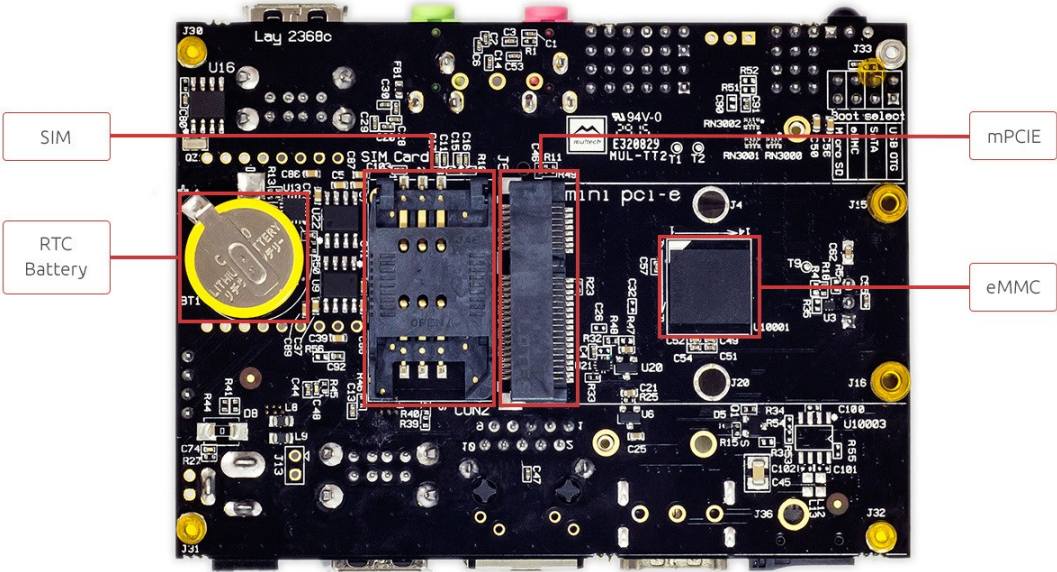
Interfaces

Top View



Interfaces

Bottom View



Available SKUs for HummingBoard Edge

SKU	Description
SRHBCEE008CV12	HummingBoard Edge 8GB eMMC Com. Temp R1.2
SRHBCEE008IV12	HummingBoard Edge 8GB eMMC Ind. Temp R1.2

Safety Notice

- a. This device is to be used with Certified Power adaptor with output rated 12VDC, 1.5A. Power adapter must meet Limited power source (LPS) requirements.
- b. Power adapter must meet local safety standards and requirements based on product intended use.
- c. Power adapter must meet Operating environment conditions as specified above.

Disposal

Follow local regulations regarding disposal of the product. Dispose of your product in accordance with local regulations. In some areas, the disposal of these items in household or business trash may be prohibited.

Help us protect the environment- recycle!

IMPORTANT NOTICE – Please Read Carefully

No warranty of accuracy is given concerning the contents of the information contained in this document. To the extent permitted by law no liability (including liability to any person by reason of negligence) will be accepted by SolidRun Ltd. Or its employees for any direct or indirect loss or damage caused by omissions from or inaccuracies in this document.

SolidRun Ltd. Reserves the right to change details in this publication without notice

Product and company names herein may be the trademarks of their respective owners.

Information in this document supersedes and replaces information previously supplied in any prior versions of this document.

Support

For technical support please visit:

Our Wiki – <http://wiki.solid-run.com/>

Our Forums - <http://forum.solid-run.com/>

For direct support please contact us at: support@solid-run.com

Documentation

Additional documentation available at:

<http://wiki.solid-run.com/doku.php?id=products:imx6:documents>