



Chipsmall Limited consists of a professional team with an average of over 10 year of expertise in the distribution of electronic components. Based in Hongkong, we have already established firm and mutual-benefit business relationships with customers from,Europe,America and south Asia,supplying obsolete and hard-to-find components to meet their specific needs.

With the principle of "Quality Parts,Customers Priority,Honest Operation,and Considerate Service",our business mainly focus on the distribution of electronic components. Line cards we deal with include Microchip,ALPS,ROHM,Xilinx,Pulse,ON,Everlight and Freescale. Main products comprise IC,Modules,Potentiometer,IC Socket,Relay,Connector.Our parts cover such applications as commercial,industrial, and automotives areas.

We are looking forward to setting up business relationship with you and hope to provide you with the best service and solution. Let us make a better world for our industry!



## Contact us

Tel: +86-755-8981 8866 Fax: +86-755-8427 6832

Email & Skype: info@chipsmall.com Web: www.chipsmall.com

Address: A1208, Overseas Decoration Building, #122 Zhenhua RD., Futian, Shenzhen, China



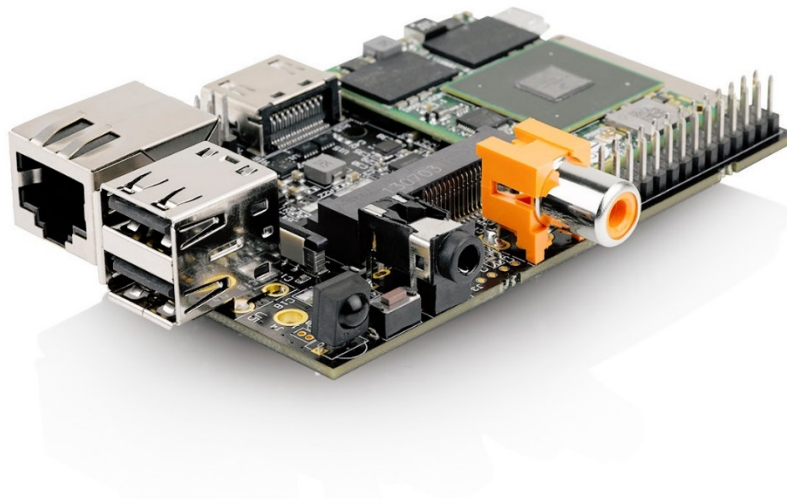


NXP-Freescale i.MX6

# HummingBoard Pro

Carrier Board for iMX6 SoM (System-On-Module)

Rev 3.5



Simple. Robust. Computing Solutions

**SolidRun Ltd.**

3 Dolev st., 3rd floor, P.O. Box 75

Migdal Tefen 2495900, Israel.

[www.solid-run.com](http://www.solid-run.com)

## Overview

The Pro version of the HummingBoard carrier offers a valuable development platform with advanced capabilities (including multiple storage methods) in an embedded device. As opposed to the HummingBoard Base model, the HummingBoard pro focuses on larger file storage via mSATA, LVDS display integration, as well as extensibility through additional board access.

## HummingBoard Pro Highlighted Features

- ✿ Based on NXP's iMX6 Single to Quad Core
- ✿ Up to 2GB DDR3
- ✿ Small footprint
- ✿ Robust design

## System Specifications

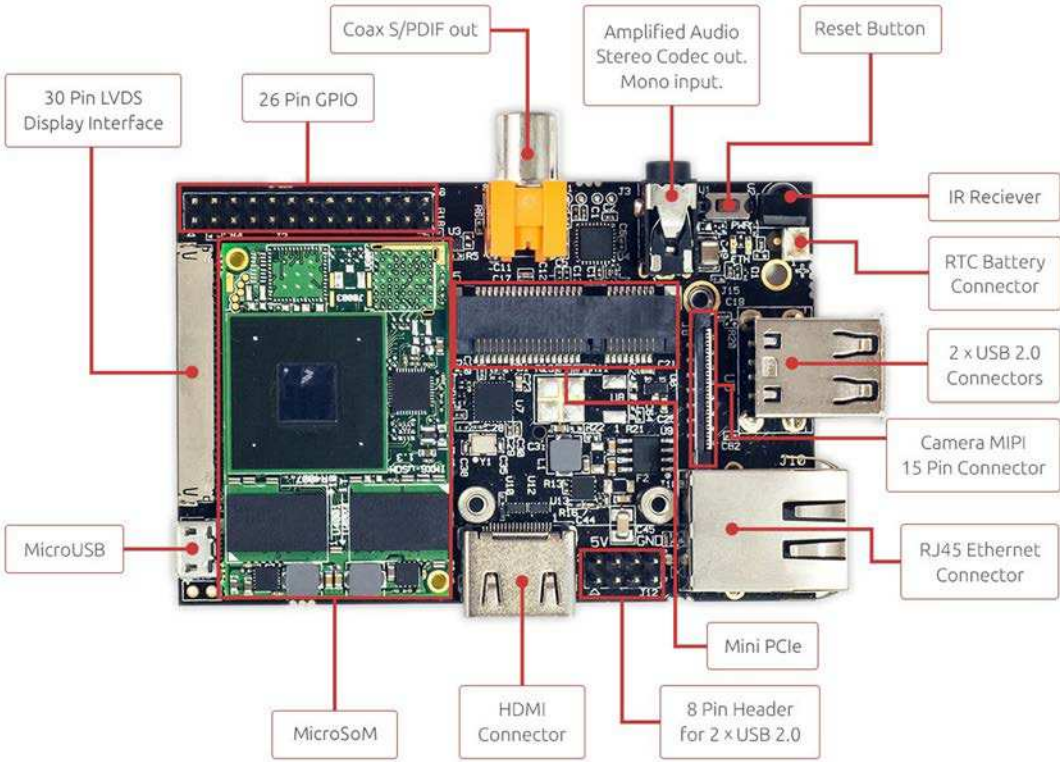
<b>SoM Model</b>
<b>Memory and Storage</b>
<b>Connectivity</b>
<b>Media</b>
<b>I/O</b>
<b>Power</b>
<b>Software</b>
<b>Dimensions (WxL)</b>

(\*) Supported with uSoM i2eX and above.

(\*\*) Note that due to internal i.MX6 buses the 1000Mbps interface speed is limited to 470Mbps.

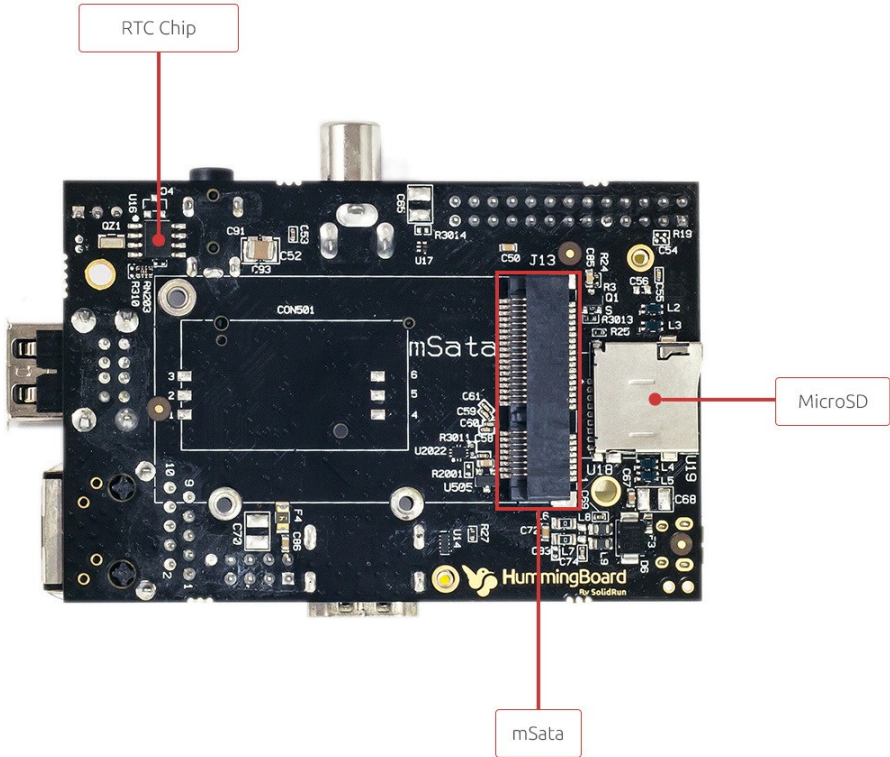
# Interfaces

## Top View



# Interfaces

## Bottom View



## Available SKUs for HummingBoard Pro

SKU	Description
SRHBCPE000CV35	HummingBoard Pro   Com. Temp   R3.5

## Safety Notice

- a. This device is to be used with Certified Power adaptor with output rated 5VDC, 3A. Power adapter must meet Limited power source (LPS) requirements.
- b. Power adapter must meet local safety standards and requirements based on product intended use.
- c. Power adapter must meet Operating environment conditions as specified above.

## Disposal

Follow local regulations regarding disposal of the product. Dispose of your product in accordance with local regulations. In some areas, the disposal of these items in household or business trash may be prohibited.

Help us protect the environment- recycle!

## IMPORTANT NOTICE – Please Read Carefully

No warranty of accuracy is given concerning the contents of the information contained in this document. To the extent permitted by law no liability (including liability to any person by reason of negligence) will be accepted by SolidRun Ltd. Or its employees for any direct or indirect loss or damage caused by omissions from or inaccuracies in this document.

SolidRun Ltd. Reserves the right to change details in this publication without notice

Product and company names herein may be the trademarks of their respective owners.

Information in this document supersedes and replaces information previously supplied in any prior versions of this document.

## Support

For technical support please visit:

Our Wiki – <http://wiki.solid-run.com/>

Our Forums - <http://forum.solid-run.com/>

For direct support please contact us at: [support@solid-run.com](mailto:support@solid-run.com)

## Documentation

Additional documentation available at:

<http://wiki.solid-run.com/doku.php?id=products:imx6:documents>