



Chipsmall Limited consists of a professional team with an average of over 10 year of expertise in the distribution of electronic components. Based in Hongkong, we have already established firm and mutual-benefit business relationships with customers from,Europe,America and south Asia,supplying obsolete and hard-to-find components to meet their specific needs.

With the principle of “Quality Parts,Customers Priority,Honest Operation,and Considerate Service”,our business mainly focus on the distribution of electronic components. Line cards we deal with include Microchip,ALPS,ROHM,Xilinx,Pulse,ON,Everlight and Freescale. Main products comprise IC,Modules,Potentiometer,IC Socket,Relay,Connector.Our parts cover such applications as commercial,industrial, and automotives areas.

We are looking forward to setting up business relationship with you and hope to provide you with the best service and solution. Let us make a better world for our industry!



Contact us

Tel: +86-755-8981 8866 Fax: +86-755-8427 6832

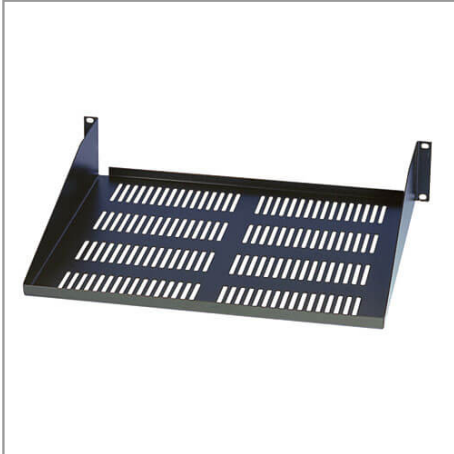
Email & Skype: info@chipsmall.com Web: www.chipsmall.com

Address: A1208, Overseas Decoration Building, #122 Zhenhua RD., Futian, Shenzhen, China



SmartRack 2U Cantilever Fixed Shelf (60 lb / 27 kg capacity; 18-in. / 457 mm depth.)

MODEL NUMBER: SRSHELF2P



Highlights

- Fixed Shelf, 2U Cantilever mount. Required mounting hardware included
- 2 or 4 post rack compatible
- 18 inch shelf depth
- Cantilever shelf supports monitors and other equipment
- Cold rolled steel with black finish.
- Use two shelves back to back to create a deep fixed shelf in 2POST racks

Package Includes

- Shelf and mounting hardware

Description

Tripp Lite's SmartRack SRSHELF2P is a 2U cantilever mount fixed shelf. Cantilever shelf supports monitors and other equipment with a 60lb capacity. Shelf is compatible with 2 or 4 post rack enclosure cabinets. The SRSHELF2P is 18 inches in depth but can use two shelves back to back to create a deep fixed shelf in 2POST racks. Required mounting hardware is included.

Features

- 2U cantilever mount fixed shelf
- Cantilever shelf supports monitors and other equipment with a 60lb capacity
- Shelf is compatible with 2 or 4 post rack enclosure cabinets
- SRSHELF2P is 18 inches in depth but can use two shelves back to back to create a deep fixed shelf in 2POST racks
- Required mounting hardware is included

Specifications

OVERVIEW	
UPC Code	037332144614
Accessories Type	Rack Shelves
PHYSICAL	
Shipping Dimensions (hwd / in.)	4.100 x 18.800 x 19.200
Shipping Dimensions (hwd / cm)	10.41 x 47.75 x 48.77



Tripp Lite
1111 W. 35th Street
Chicago, IL 60609 USA
Telephone: 773.869.1234
www.tripplite.com

Shipping Weight (lbs.)	6.5000
Shipping Weight (kg)	2.95
Unit Dimensions (hwd / in.)	3.5 x 19 x 18
Unit Dimensions (hwd / cm)	8.89 x 48.26 x 45.72
Unit Weight (lbs.)	5
Unit Weight (kg)	2.27
WARRANTY	
Product Warranty Period (Worldwide)	5-year limited warranty

© 2018 Tripp Lite. All rights reserved. All product and company names are trademarks or registered trademarks of their respective holders. Use of them does not imply any affiliation with or endorsement by them. Tripp Lite has a policy of continuous improvement. Specifications are subject to change without notice. Tripp Lite uses primary and third-party agencies to test its products for compliance with standards. See a list of Tripp Lite's testing agencies: <https://www.tripplite.com/products/product-certification-agencies>