



Chipsmall Limited consists of a professional team with an average of over 10 year of expertise in the distribution of electronic components. Based in Hongkong, we have already established firm and mutual-benefit business relationships with customers from,Europe,America and south Asia,supplying obsolete and hard-to-find components to meet their specific needs.

With the principle of “Quality Parts,Customers Priority,Honest Operation,and Considerate Service”,our business mainly focus on the distribution of electronic components. Line cards we deal with include Microchip,ALPS,ROHM,Xilinx,Pulse,ON,Everlight and Freescale. Main products comprise IC,Modules,Potentiometer,IC Socket,Relay,Connector.Our parts cover such applications as commercial,industrial, and automotives areas.

We are looking forward to setting up business relationship with you and hope to provide you with the best service and solution. Let us make a better world for our industry!



Contact us

Tel: +86-755-8981 8866 Fax: +86-755-8427 6832

Email & Skype: info@chipsmall.com Web: www.chipsmall.com

Address: A1208, Overseas Decoration Building, #122 Zhenhua RD., Futian, Shenzhen, China



PART NO.	HOLE DIA. "G"	THICKNESS "F"	"A"	"B"	"C"	"D"	"E"	FIG NO.
SRT-3035		.039-.079 (1.0-2.0)			.14 (3.5)		.26	1
SRT-3045		.079-.118 (2.0-3.0)			.18 (4.5)		.26 (6.6)	
SRT-3055	.122-.126 (3.1-3.2)	.118-.157 (3.0-4.0)			.22 (5.5)	.118 (3.0)	.35 (9.0)	
SRT-3065		.157-.197 (4.0-5.0)			.26 (6.5)		.35 (9.0)	
SRT-3075		.197-.236 (5.0-6.0)	.394 (10.0)		.30 (7.5)		.35 (9.0)	
SRT-3080		.217-.256 (5.5-6.5)			.32 (8.0)			2
SRT-3535		.039-.079 (1.0-2.0)			.14 (3.5)		.26	
SRT-3545		.079-.118 (2.0-3.0)			.18 (4.5)		.26 (6.6)	
SRT-3555	.142-.146 (3.6-3.7)	.118-.146 (3.0-3.7)		.315 (8.0)	.22 (5.5)	.139 (3.5)	.35 (9.0)	
SRT-3570		.150-.205 (3.8-5.2)			.28 (7.0)		.35 (9.0)	
SRT-3580		.209-.256 (5.3-6.5)			.32 (8.0)		.35 (9.0)	
SRT-4050		.098-.138 (2.5-3.5)			.20 (5.0)		.30 (7.6)	
SRT-4060		.138-.177 (3.5-4.5)	.472 (12.0)		.24 (6.0)		.30 (7.6)	
SRT-4070	.161-.165 (4.1-4.2)	.177-.216 (4.5-5.5)			.28 (7.0)	.157 (4.0)	.44 (11.2)	
SRT-4080		.216-.256 (5.5-6.5)			.32 (8.0)		.44 (11.2)	
SRT-4090		.256-.295 (6.5-7.5)			.35 (9.0)			
SRT-4100		.295-.335 (7.5-8.5)			.39 (10.0)			

- NOTES:
1. MATERIAL: NYLON 6, (RMS-52).
 2. COLOR: BLACK.
 3. V-0 NYLON, RMS-103, AVAILABLE BY SPECIAL ORDER. TO ORDER REPLACE "SRT" WITH "SRTV0"

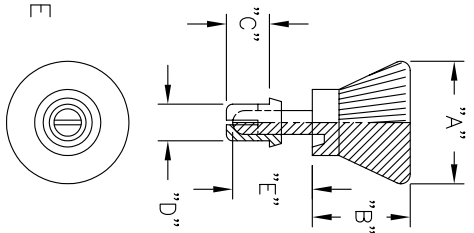


FIG. 1

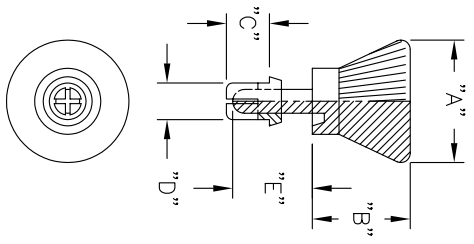
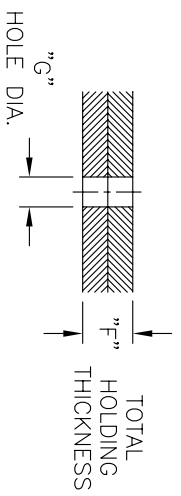


FIG. 2



G	SEE ECN #1149 FOR CHANGES	SU 04.03.06	TITLE: SNAP RIVET, T TYPE				DWG IN IN (MM)	
F	SEE ECN #992 FOR CHANGES	SK 05.03.05	FILE #	SRT	DWN: P.B.	APP:	PART #	FINAL
E	REM. RMS COL., ADDED RMS-52 & RMS 103	RG 10.24.01	MAT'L:	SEE NOTES	DT: 04-05-94	DT:	SRT-SERIES	
D	CHANGED FILE NUMBER	SM 05.18.01	RE:	RICHICO, INC.	Po BOX 804238	CHICAGO, 60680		
C	ADDED P/N: SRT-3075	SM 02.01.01			(773) 539-4060			
B	ADDED P/N: SRT-3535, SRT-3580, SRT-4090	S.M.11.08.00						
A	QUOTATION MARKS REMOVED	P.B.01.19.95						
REV	DESCRIPTION	ENGR DATE						

