



Chipsmall Limited consists of a professional team with an average of over 10 year of expertise in the distribution of electronic components. Based in Hongkong, we have already established firm and mutual-benefit business relationships with customers from,Europe,America and south Asia,supplying obsolete and hard-to-find components to meet their specific needs.

With the principle of “Quality Parts,Customers Priority,Honest Operation,and Considerate Service”,our business mainly focus on the distribution of electronic components. Line cards we deal with include Microchip,ALPS,ROHM,Xilinx,Pulse,ON,Everlight and Freescale. Main products comprise IC,Modules,Potentiometer,IC Socket,Relay,Connector.Our parts cover such applications as commercial,industrial, and automotives areas.

We are looking forward to setting up business relationship with you and hope to provide you with the best service and solution. Let us make a better world for our industry!



Contact us

Tel: +86-755-8981 8866 Fax: +86-755-8427 6832

Email & Skype: info@chipsmall.com Web: www.chipsmall.com

Address: A1208, Overseas Decoration Building, #122 Zhenhua RD., Futian, Shenzhen, China



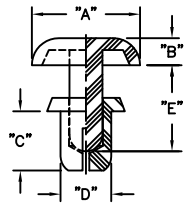


FIG. 1

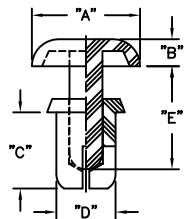
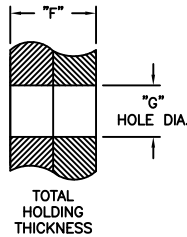


FIG. 2



MAT'L: NYLON 6 (RMS-52) PART NO.	HOLE DIA. "G"	EXTRACTION FORCE LB (KG)	THICKNESS "F"	"ØA" ±.008 (±0.2)	"B" ±.008 (±0.2)	"C" ±.012 (±0.3)	"ØD"	"E" ±.012 (±0.3)	FIG. NO.
SR-2024	.083-.087 (2.1-2.2)	6.6 MIN. (3 MIN)	.024-.047 (0.6-1.2)	.165 (4.2)	.047 (1.2)	.09 (2.4)	.079 (2.0)	.11 (2.8)	1
SR-2032			.051-.079 (1.3-2.0)			.13 (3.2)		.15 (3.8)	
SR-2040			.083-.110 (2.1-2.8)			.16 (4.0)		.22 (5.5)	
SR-2048			.114-.142 (2.9-3.6)			.19 (4.8)		.28 (7.2)	
SR-2056			.146-.173 (3.7-4.4)			.22 (5.6)		.28 (7.1)	
SR-2064			.173-.197 (4.4-5.0)			.25 (6.4)			
SR-2632	.106-.110 (2.7-2.8)	11.0 MIN. (5 MIN.)	.039-.079 (1.0-2.0)	.197 (5.0)	.055 (1.4)	.13 (3.2)	.102 (2.6)	.18 (4.5)	1
SR-2642			.079-.118 (2.0-3.0)			.17 (4.2)		.24 (6.1)	
SR-2648			.106-.142 (2.7-3.6)			.19 (4.8)		.31 (7.8)	
SR-2655			.134-.169 (3.4-4.3)			.22 (5.5)			
SR-2664			.169-.205 (4.3-5.2)			.25 (6.4)			
SR-2672			.201-.236 (5.1-6.0)			.28 (7.2)			
SR-3035	.122-.126 (3.1-3.2)	17.6 MIN. (8 MIN.)	.039-.079 (1.0-2.0)	.252 (6.4)	.063 (1.6)	.14 (3.5)	.118 (3.0)	.20 (5.1)	1
SR-3045			.079-.118 (2.0-3.0)			.18 (4.5)		.24 (6.1)	
SR-3055			.118-.158 (3.0-4.0)			.22 (5.5)		.35 (9.0)	
SR-3065			.158-.197 (4.0-5.0)			.26 (6.5)		.43 (11.0)	
SR-3075			.197-.236 (5.0-6.0)			.30 (7.5)			
SR-3080			.217-.256 (5.5-6.5)			.31 (8.0)			
SR-3090	.256-.295 (6.5-7.5)	.35 (9.0)							
SR-3100	.295-.335 (7.5-8.5)	.39 (10.0)							
SR-3535	.142-.146 (3.6-3.7)	26.4 MIN. (12 MIN.)	.047-.083 (1.2-2.1)	.252 (6.4)	.063 (1.6)	.14 (3.5)	.138 (3.5)	.20 (5.1)	2
SR-3545			.083-.118 (2.1-3.0)			.18 (4.5)		.24 (6.1)	
SR-3550			.106-.142 (2.7-3.6)			.20 (5.0)		.35 (9.0)	
SR-3555			.118-.158 (3.0-4.0)			.22 (5.5)		.36 (9.1)	
SR-3560			.146-.181 (3.7-4.6)			.24 (6.0)			
SR-3570			.177-.217 (4.5-5.5)			.28 (7.0)			
SR-3580	.217-.256 (5.5-6.5)	.31 (8.0)							
SR-4050	.161-.165 (4.1-4.2)	44.0 MIN. (20 MIN.)	.098-.138 (2.5-3.5)	.315 (8.0)	.071 (1.8)	.20 (5.0)	.158 (4.0)	.28 (7.1)	2
SR-4060			.138-.177 (3.5-4.5)			.24 (6.0)		.35 (9.0)	
SR-4070			.177-.217 (4.5-5.5)			.28 (7.0)		.43 (11.0)	
SR-4080			.217-.256 (5.5-6.5)			.31 (8.0)		.55 (14.0)	
SR-4090			.256-.295 (6.5-7.5)			.35 (9.0)			
SR-4100			.295-.335 (7.5-8.5)			.39 (10.0)			
SR-4120	.354-.413 (9.0-10.5)	.47 (12.0)							
SR-5045	.201-.205 (5.1-5.2)	55.0 MIN. (25 MIN.)	.059-.098 (1.5-2.5)	.354 (9.0)	.087 (2.2)	.18 (4.5)	.197 (5.0)	.26 (6.5)	2
SR-5055			.098-.138 (2.5-3.5)			.22 (5.5)		.33 (8.5)	
SR-5065			.138-.177 (3.5-4.5)			.26 (6.5)		.41 (10.5)	
SR-5075			.177-.217 (4.5-5.5)			.30 (7.5)		.47 (12.0)	
SR-5085			.217-.256 (5.5-6.5)			.33 (8.5)			
SR-5095			.256-.295 (6.5-7.5)			.37 (9.5)			
SR-5105	.295-.335 (7.5-8.5)	.41 (10.5)							
SR-6060	.240-.244 (6.1-6.2)	66.0 MIN. (30 MIN.)	.098-.158 (2.5-4.0)	.472 (12.0)	.098 (2.5)	.24 (6.0)	.236 (6.0)	.35 (9.0)	2
SR-6080			.138-.217 (3.5-5.5)		.118 (3.0)	.31 (8.0)		.39 (10.0)	

NOTES:

- MATERIAL: NYLON 6, (RMS-52)
COLOR: BLACK & WHITE STANDARD.
ADD "B" FOR BLACK AND "W" FOR WHITE ON THE
END OF PART NUMBER
- MATERIAL: NYLON 66/6, UL94 V-0, (RMS-103)
AVAILABLE BY SPECIAL ORDER.
TO ORDER USE P/N: SRVO-XXXX
COLOR: BLACK.
ALSO AVAILABLE IN COLOR WHITE BY SPECIAL ORDER.
TO ORDER ADD "W" TO THE END OF PART NO.
- GREEN (GN), YELLOW (YL), RED (RD), BLUE (BL),
AND GRAY (GY), AVAILABLE BY SPECIAL ORDER ONLY.

P SEE ECN #1327 FOR CHANGES SK 05.23.07		O SEE ECN #1260 FOR CHANGES SK 12.06.06		- SEE ENGINEERING FOR REV. A-N -		REV DESCRIPTION ENGR DATE		TITLE: SNAP-RIVETS				DWG IN IN (MM) FINAL		PR	
TOLERANCES UNLESS NOTED .XX=±.010 .XXX=±.005 FRAC=1/64 ANG=1°		FILE # SR		DWN: J.B.		APP:		PART #		PRINT TYPE		CA			
MATERIAL: SEE NOTES		RE: RICHCO, INC.		DT: 02/28/97		DT:		SEE CHART		RICHCO INC. PO BOX 804238, CHICAGO, 60680 (773) 539-4060					