



Chipsmall Limited consists of a professional team with an average of over 10 year of expertise in the distribution of electronic components. Based in Hongkong, we have already established firm and mutual-benefit business relationships with customers from,Europe,America and south Asia,supplying obsolete and hard-to-find components to meet their specific needs.

With the principle of “Quality Parts,Customers Priority,Honest Operation,and Considerate Service”,our business mainly focus on the distribution of electronic components. Line cards we deal with include Microchip,ALPS,ROHM,Xilinx,Pulse,ON,Everlight and Freescale. Main products comprise IC,Modules,Potentiometer,IC Socket,Relay,Connector.Our parts cover such applications as commercial,industrial, and automotives areas.

We are looking forward to setting up business relationship with you and hope to provide you with the best service and solution. Let us make a better world for our industry!



Contact us

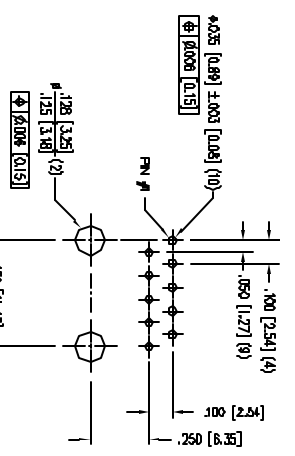
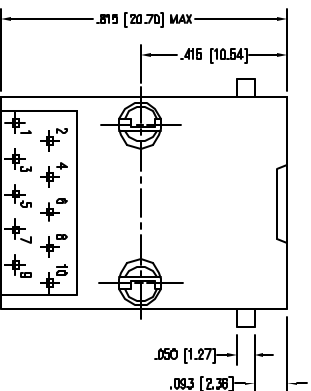
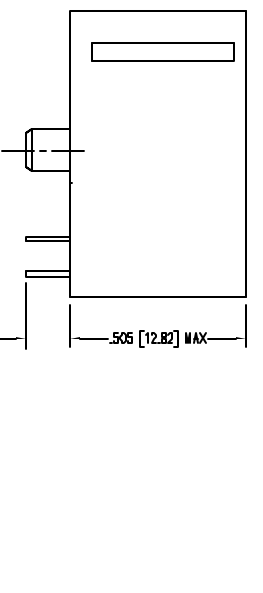
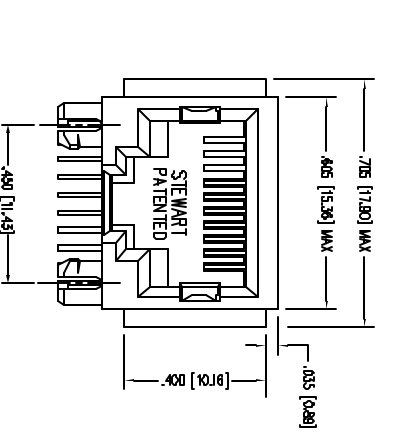
Tel: +86-755-8981 8866 Fax: +86-755-8427 6832

Email & Skype: info@chipsmall.com Web: www.chipsmall.com

Address: A1208, Overseas Decoration Building, #122 Zhenhua RD., Futian, Shenzhen, China



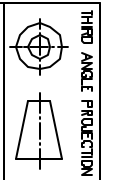
DATE	REV	BY	APP'D. BY
8-12-00	A2	7714	TRM
2-1-00	A3	7184	JM



PCB, RECOMMENDED HOLE LAYOUT
 SEEN FROM COMPONENT SIDE
 ALL DIMENSIONAL DIMENSIONS ARE BASIC.

- NOTES:
1. CONNECTOR MATERIALS:
 HOUSING: THERMOPLASTIC UH94 V-0
 CONTACTS: COPPER ALLOY
 CONTACT PLATING: SELECTIVE GOLD IN CONTACT AREA
 SEE DRAWING FOR PART NUMBERS
 2. TOLERANCES DIMPLY WITH FACIL DIMENSION REQUIREMENTS
 3. FOR PRODUCT SPECIFICATIONS SEE PRO22-01

30 MICRO-INCHES [0.76um]	SS-641010-FLS
CONTACT PLATING IN MATING AREA	PART NUMBER



THIRD ANGLE PROJECTION
 DRAWING IS SUBJECT TO
 DIMENSIONS UNLESS NOTED
 UNLESS OTHERWISE SPECIFIED
 TOLERANCES ARE ±.005 [0.13]
 ANGLES ARE ± 1°
 SHEET NO. 1 OF 1

Bel Stewart Connector

1118 Susquehanna Trail South
 Glen Rock, PA 17327-8100
 (717) 235-7012 Fax (717) 235-7834 <http://www.belstewartconnector.com>

TEN CONTACT, TEN POSITION FLANGE JACK

DRN #	RVD	DATE
APP'D BY	RJC	02-04-05
DRW NO.	C16440061	REV. 02-22-05
		A3

