



Chipsmall Limited consists of a professional team with an average of over 10 year of expertise in the distribution of electronic components. Based in Hongkong, we have already established firm and mutual-benefit business relationships with customers from,Europe,America and south Asia,supplying obsolete and hard-to-find components to meet their specific needs.

With the principle of "Quality Parts,Customers Priority,Honest Operation,and Considerate Service",our business mainly focus on the distribution of electronic components. Line cards we deal with include Microchip,ALPS,ROHM,Xilinx,Pulse,ON,Everlight and Freescale. Main products comprise IC,Modules,Potentiometer,IC Socket,Relay,Connector.Our parts cover such applications as commercial,industrial, and automotives areas.

We are looking forward to setting up business relationship with you and hope to provide you with the best service and solution. Let us make a better world for our industry!



## Contact us

Tel: +86-755-8981 8866 Fax: +86-755-8427 6832

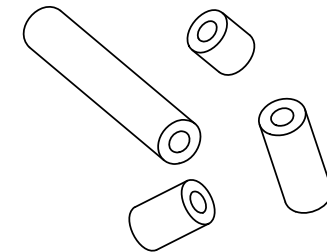
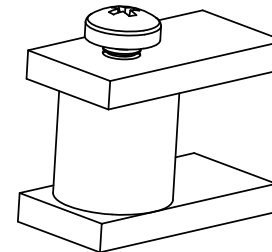
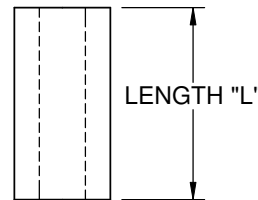
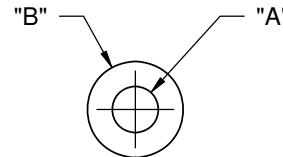
Email & Skype: info@chipsmall.com Web: www.chipsmall.com

Address: A1208, Overseas Decoration Building, #122 Zhenhua RD., Futian, Shenzhen, China



LENGTH "L"	LENGTH TOLERANCE	PART NO.						
		FOR #4 SCREW (M-2.5)	FOR #6 SCREW (M-3)	FOR #8 SCREW (M-4)	FOR #8 SCREW (M-4)	FOR #10 SCREW	FOR 1/4 BOLT (M-6)	FOR 3/8 BOLT (M-9)
		"A"=.120±.007 [3.0±0.18] "B"=1/4±.007 [6.4±0.18]	"A"=.147±.007 [3.7±0.18] "B"=1/4±.007 [6.4±0.18]	"A"=.175±.007 [4.4±0.18] "B"=1/4±.007 [6.4±0.18]	"A"=.175±.007 [4.4±0.18] "B"=3/8±.007 [9.5±0.18]	"A"=.200±.010 [5.1±0.25] "B"=3/8±.010 [9.5±0.25]	"A"=.266±.010 [6.8±0.25] "B"=1/2±.010 [12.7±0.25]	"A"=.397±.010 [10.1±0.25] "B"=1/2±.010 [12.7±0.25]
1/4 [6.4]	±.015 [±0.38]	SS4-2	SS6-2	SS8-2	SS8-2L	SS10-2	SS1/4-2	SS3/8-2
3/8 [9.5]		SS4-3	SS6-3	SS8-3	SS8-3L	SS10-3	-	SS3/8-3
1/2 [12.7]		SS4-4	SS6-4	SS8-4	SS8-4L	SS10-4	SS1/4-4	SS3/8-4
5/8 [15.9]		SS4-5	SS6-5	SS8-5	SS8-5L	SS10-5	-	-
3/4 [19.1]		SS4-6	SS6-6	SS8-6	SS8-6L	SS10-6	SS1/4-6	SS3/8-6
1 [25.4]		SS4-8	SS6-8	SS8-8	SS8-8L	SS10-8	SS1/4-8	SS3/8-8
1-1/4 [31.8]		SS4-10	SS6-10	SS8-10	SS8-10L	SS10-10	SS1/4-10	*SS3/8-10
1-1/2 [38.1]		SS4-12	SS6-12	SS8-12	SS8-12L	SS10-12	SS1/4-12	*SS3/8-12
1-3/4 [44.5]		*SS4-14	*SS6-14	*SS8-14	*SS8-14L	*SS10-14	*SS1/4-14	*SS3/8-14
2 [50.8]		*SS4-16	*SS6-16	*SS8-16	*SS8-16L	*SS10-16	*SS1/4-16	SS3/8-16*
2-1/4 [57.2]	±.020 [±0.51]	-	-	*SS8-18	*SS8-18L	*SS10-18	*SS1/4-18	*SS3/8-18
2-1/2 [63.5]		-	-	*SS8-20	*SS8-20L	*SS10-20	*SS1/4-20	*SS3/8-20
2-3/4 [69.9]		-	-	*SS8-22	*SS8-22L	*SS10-22	*SS1/4-22	*SS3/8-22
3 [76.2]		-	-	*SS8-24	*SS8-24L	*SS10-24	*SS1/4-24	*SS3/8-24

\*PARTS AVAILABLE BY SPECIAL ORDER



NOTES:  
1. MATERIAL: CPVC, RIGID (RMS-11).  
2. COLOR: LIGHT GRAY.

L	SEE CO 200604 FOR CHANGES	SK	12/01/10
K	SEE CO 200077 FOR CHANGES	SK	12/03/07
J	ECN #1337 FOR CHANGES	SK	07/10/07
I	SEE ECN #968 FOR CHANGES	SK	03/23/05
H	SEE ECN #914 FOR CHANGES	SK	01/14/05
G	SEE ECN #818 FOR CHANGES	SM	10/01/04
F	SEE ECN #816 FOR CHANGES	SM	07/02/04
-	SEE ENGINEERING FOR REV. A-E	--	--
REV.	DESCRIPTION	ENGR.	DATE

TITLE: <b>ROUND SPACERS SERIES</b>					DWG IN IN [MM]	
CREATED USING SOLIDWORKS	FILE #: SS	DWN: SM	APP: -	FINAL		
TOLERANCES UNLESS NOTED .XX=±.010 .XXX=±.005 FRAC.=±1/64 ANG.=±1°	SHEET: 1 OF 1	SHEET SIZE: A	DT: 07/02/04	CHKD: -	PART #	PRINT TYPE
	RE: RICHCO, INC.	RICHCO, INC. ENG@RICHCO-INC.COM (773) 539-4060	SEE TABLE	CA		