



Chipsmall Limited consists of a professional team with an average of over 10 year of expertise in the distribution of electronic components. Based in Hongkong, we have already established firm and mutual-benefit business relationships with customers from,Europe,America and south Asia,supplying obsolete and hard-to-find components to meet their specific needs.

With the principle of “Quality Parts,Customers Priority,Honest Operation,and Considerate Service”,our business mainly focus on the distribution of electronic components. Line cards we deal with include Microchip,ALPS,ROHM,Xilinx,Pulse,ON,Everlight and Freescale. Main products comprise IC,Modules,Potentiometer,IC Socket,Relay,Connector.Our parts cover such applications as commercial,industrial, and automotives areas.

We are looking forward to setting up business relationship with you and hope to provide you with the best service and solution. Let us make a better world for our industry!



Contact us

Tel: +86-755-8981 8866 Fax: +86-755-8427 6832

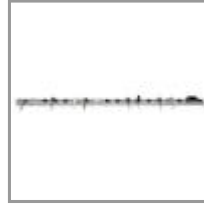
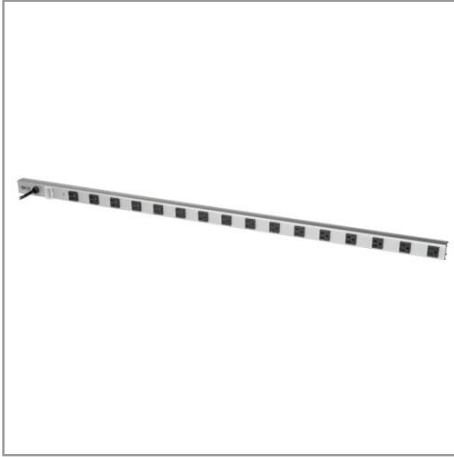
Email & Skype: info@chipsmall.com Web: www.chipsmall.com

Address: A1208, Overseas Decoration Building, #122 Zhenhua RD., Futian, Shenzhen, China



16-Outlet Industrial Surge Protector, 15 ft. Cord, 1650 Joules, Metal Housing, 48 in. Length

MODEL NUMBER: **SS7415-15**



Safeguard your valuable electronics against dangerous surges, spikes and line noise. Recommended for equipment racks, server rooms, workbenches, raceways and other commercial applications requiring AC line protection.

Description

Recommended for connecting multiple loads in commercial or retail environments, the SS7415-15 16-Outlet Industrial Surge Protector features a surge protection rating of 1650 joules to defend your sensitive electronic components against strong surges and spikes. It filters out electromagnetic interference (EMI) and radio frequency interference (RFI) that can disrupt your electronics and inflict hardware damage or data loss.

Your devices plug into 16 NEMA 5-15R outlets, which are spaced 2.7 inches apart center to center to reduce cable clutter and accommodate bulky transformers. An integrated 15A circuit breaker protects all outlets and shuts down connected equipment in case of overload. The lighted on/off switch with transparent safety cover provides one-touch control over connected equipment. A diagnostic LED confirms your connected equipment is protected.

The long 15-foot AC power cord with NEMA 5-15P plug gives you flexibility to reach distant outlets while fitting easily into your setup. Adjustable clips are included for mounting the 48-inch all-metal housing horizontally or vertically on a variety of surfaces.

Features

1650-Joule Surge Protection for Industrial Electronics

- Protects multiple loads against even the strongest surges and spikes in equipment racks, server rooms, workbenches, raceways and other commercial or retail environments
- Recommended for networks, telecom systems, audio/video systems and live sound applications requiring AC line protection

Highlights

- 16 NEMA 5-15R outlets with 2.7 in. center-to-center spacing
- 1650-joule surge protection rating
- Filters out threatening EMI/RFI line noise
- 15 ft. AC power cord with NEMA 5-15P plug
- Mounts horizontally or vertically on a variety of surfaces

Package Includes

- SS7415-15 16-Outlet Industrial Surge Protector, Metal Housing
- Adjustable mounting clips
- Owner's manual



- Filters out disruptive EMI/RFI line noise that can cause equipment damage or data loss

16 Outlets Accept Wide Range of Electronic Devices

- 16 NEMA 5-15R AC outlets accept most computer, networking and telecom equipment
- Outlets are spaced 2.7 in. center to center to reduce cable clutter and accommodate bulky transformers

Premium Safety Features

- Lighted on/off switch with transparent locking safety cover provides one-touch control over connected equipment
- Integrated 15A circuit breaker shuts down outlets in case of power overload
- Diagnostic LED confirms protection status at a glance
- Conforms to current UL 1449 3rd Edition safety standards

Flexible Mounting Options

- Included clips allow mounting horizontally or vertically on a variety of surfaces
- Long 15 ft. AC power cord with NEMA 5-15P plug reaches distant outlets
- All-metal 48 in. housing designed for long life

Specifications

OVERVIEW	
UPC Code	037332100290
OUTPUT	
Frequency Compatibility	50 / 60 Hz
Output Receptacles	(16) 5-15R
Output (Watts)	1800
Circuit Breaker (amps)	15
Outlet Spacing	2.717-in. center-to-center spacing
Right-Angle Outlets	No
INPUT	
Nominal Input Voltage(s) Supported	120V AC
Recommended Electrical Service	120V
Input Connection Type	NEMA 5-15P
Input Cord Length (ft.)	15
Input Cord Length (m)	4.57
Input Cord Gauge Type	14 gauge, SJT



Tripp Lite
1111 W. 35th Street
Chicago, IL 60609 USA
Telephone: 773.869.1234
www.tripplite.com

Voltage Compatibility (VAC)	120
Maximum Surge Amps	22000
Right-Angle Plug	No
USER INTERFACE, ALERTS & CONTROLS	
Switches	Combination AC circuit breaker and lighted 2-position power switch controls power to all outlets
Locking Switch Cover	Transparent locking switch cover
SURGE / NOISE SUPPRESSION	
AC Suppression Joule Rating	1650
UL1449 Let Through Rating	500V UL verified
DATALINE SURGE SUPPRESSION	
Telephone/DSL Protection	No
Cable (Coax) Protection	No
Network (Ethernet) Protection	No
PHYSICAL	
Shipping Dimensions (hwd / in.)	2.40 x 3.30 x 52.00
Shipping Dimensions (hwd / cm)	6.10 x 8.38 x 132.08
Shipping Weight (lbs.)	4.50
Shipping Weight (kg)	2.04
Unit Dimensions (hwd / in.)	48 x 1.5 x 1.5
Unit Dimensions (hwd / cm)	121.92 x 3.81 x 3.81
Included Mounting Accessories	Set of adjustable mounting clamps
Receptacle Color	Black
Color (AC Line Cord)	Black
Outlets Measurement (Center to Center)	67mm
CERTIFICATIONS	
UL1449 3rd Edition (AC Suppression)	UL1449 3rd EDITION
UL1363 (Power Tap)	UL1363
cUL / CSA (Canada)	cUL
WARRANTY	
Product Warranty Period (Worldwide)	Lifetime limited warranty



Tripp Lite
1111 W. 35th Street
Chicago, IL 60609 USA
Telephone: 773.869.1234
www.tripplite.com

© 2018 Tripp Lite. All rights reserved. All product and company names are trademarks or registered trademarks of their respective holders. Use of them does not imply any affiliation with or endorsement by them. Tripp Lite has a policy of continuous improvement. Specifications are subject to change without notice. Tripp Lite uses primary and third-party agencies to test its products for compliance with standards. See a list of Tripp Lite's testing agencies: <https://www.tripplite.com/products/product-certification-agencies>