



Chipsmall Limited consists of a professional team with an average of over 10 year of expertise in the distribution of electronic components. Based in Hongkong, we have already established firm and mutual-benefit business relationships with customers from,Europe,America and south Asia,supplying obsolete and hard-to-find components to meet their specific needs.

With the principle of “Quality Parts,Customers Priority,Honest Operation,and Considerate Service”,our business mainly focus on the distribution of electronic components. Line cards we deal with include Microchip,ALPS,ROHM,Xilinx,Pulse,ON,Everlight and Freescale. Main products comprise IC,Modules,Potentiometer,IC Socket,Relay,Connector.Our parts cover such applications as commercial,industrial, and automotives areas.

We are looking forward to setting up business relationship with you and hope to provide you with the best service and solution. Let us make a better world for our industry!



Contact us

Tel: +86-755-8981 8866 Fax: +86-755-8427 6832

Email & Skype: info@chipsmall.com Web: www.chipsmall.com

Address: A1208, Overseas Decoration Building, #122 Zhenhua RD., Futian, Shenzhen, China



**LINEAR OUTPUT HALL
EFFECT TRANSDUCER**

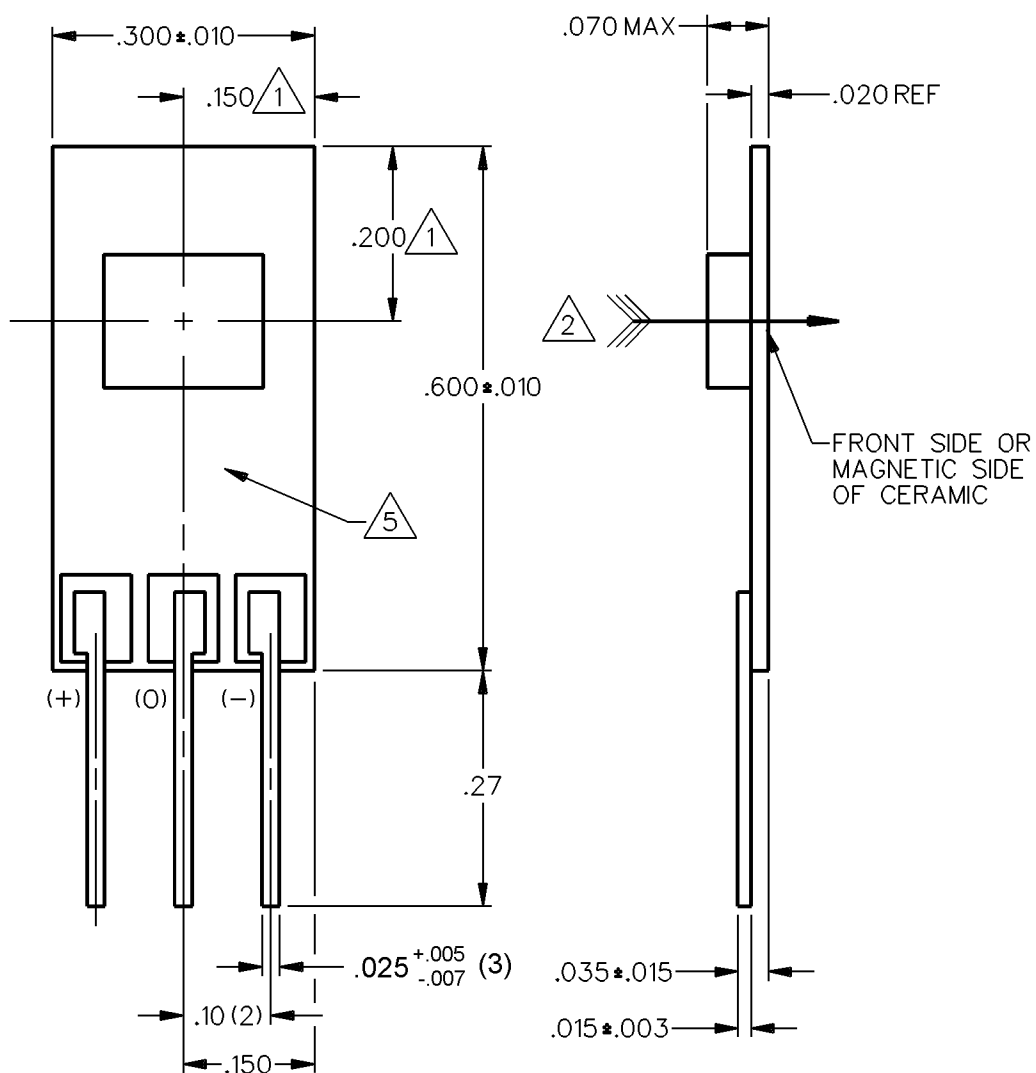
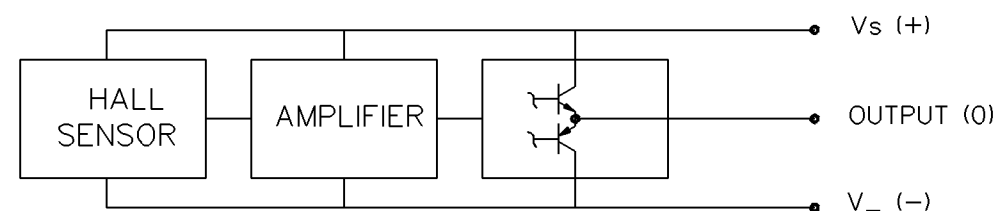
CATALOG LISTING
SS94A1B

THIS DRAWING COVERS A PROPRIETARY ITEM AND IS THE PROPERTY OF MICRO SWITCH. A DIVISION OF HONEYWELL. THIS DRAWING IS NOT TO BE COPIED OR USED WITHOUT THE APPROVAL OF MICRO SWITCH

OPERATING CHARACTERISTICS AT 5 VDC

PARAMETER	MIN	TYP	MAX	UNITS	CONDITIONS/REMARKS
SUPPLY VOLTAGE	4.50	5.00	8.00	VOLTS	-20°C TO +125°C
SUPPLY CURRENT		16	17.5	mA	MAX AT 8.0V AT -20°C
OUTPUT CURRENT			1	mA	SINKING OR SOURCING
OUTPUT SPAN		.375Vs		VOLTS	-500G TO +500G AT 25°C
SENSITIVITY	1.775	1.875	1.975	mV/g	AT 5.00 Vs & 25°C
LINEARITY	-1.5	-.8	0	% OF SPAN	DEV FROM STR LINE THRU -500 AND +500
Vout AT 0 GAUSS	2.450	2.500	2.550	VOLTS	25°C
TEMP ERROR-NULL	-.025		+.025	%/°C	-20°C TO +125°C
TEMP ERROR-GAIN	-.025		+.025	%/°C	-20°C TO +125°C

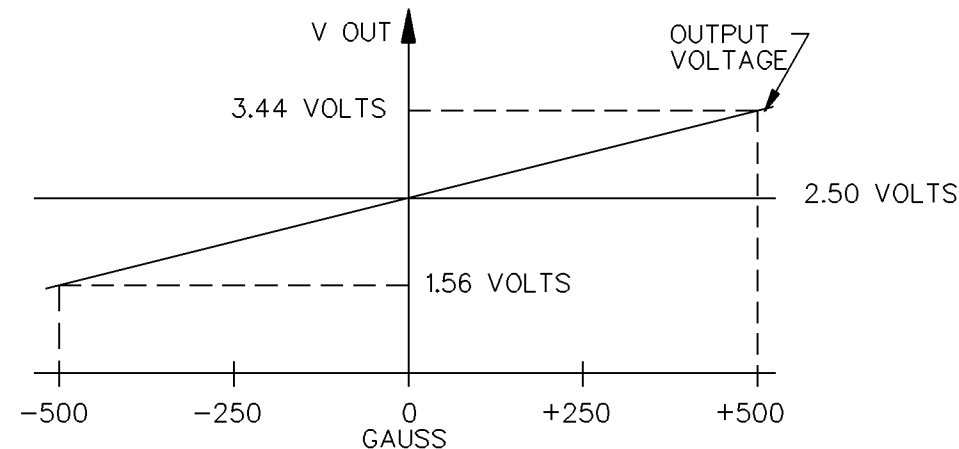
BLOCK DIAGRAM CURRENT SINKING OR SOURCING OUTPUT



NOTES

- ① CENTERLINE OF HALL CELL (IC) ONLY. THE LOCATION OF THE CERAMIC COVER IS NOT SPECIFIED
- ② THE + MAGNETIC FLUX IS IN THIS DIRECTION (THIS ASSUMES THE CONVENTION THAT THE DIRECTION OF THE EXTERNAL FLUX OF A MAGNET IS FROM THE NORTH TO THE SOUTH POLE OF THE MAGNET)
- ③ - THE DEVICE CANNOT BE DAMAGED BY MAGNETIC OVERDRIVE
- ④ - OUTPUT TYPE - RATIOMETRIC
- ⑤ ARTWORK TYPICAL

NOMINAL TRANSFER CHARACTERISTICS AT 5.0 VDC



THIRD ANGLE PROJECTION	
SCALE 5 : 1	
DO NOT SCALE PRINT	
UNLESS OTHERWISE SPECIFIED TOLERANCES ARE	
ONE PLACE	(.0) ±.030
TWO PLACE	(.00) ±.015
THREE PLACE	(.000) ±.005
ANGLES	±
WEIGHT	



CATALOG LISTING SS94A1B PAGE 1 OF 1
 ISSUE 6
 REVISIONS:
 A C068725 J A S 25 OCT 90
 B C072441 J A S 18 MAY 92
 C C095704 D L M 21 MAR 00
 D 0038694 SSK 14 APR 08
 E 0039911 SSK 19 MAY 08
 DRAWN T.M.M. 26 SEP 88
 CHECK K.A.G. 12 OCT 88
 CHECK BLR
 CHECK 88
 RELEASE NO. PR-16792
 REPLACES X89105-SS
 RASTER