



Chipsmall Limited consists of a professional team with an average of over 10 year of expertise in the distribution of electronic components. Based in Hongkong, we have already established firm and mutual-benefit business relationships with customers from,Europe,America and south Asia,supplying obsolete and hard-to-find components to meet their specific needs.

With the principle of “Quality Parts,Customers Priority,Honest Operation,and Considerate Service”,our business mainly focus on the distribution of electronic components. Line cards we deal with include Microchip,ALPS,ROHM,Xilinx,Pulse,ON,Everlight and Freescale. Main products comprise IC,Modules,Potentiometer,IC Socket,Relay,Connector.Our parts cover such applications as commercial,industrial, and automotives areas.

We are looking forward to setting up business relationship with you and hope to provide you with the best service and solution. Let us make a better world for our industry!



## Contact us

Tel: +86-755-8981 8866 Fax: +86-755-8427 6832

Email & Skype: info@chipsmall.com Web: www.chipsmall.com

Address: A1208, Overseas Decoration Building, #122 Zhenhua RD., Futian, Shenzhen, China



**MICRO SWITCH**  
a Honeywell Division

FED. MFG. CODE 91929

LINEAR OUTPUT HALL  
EFFECT TRANSDUCER

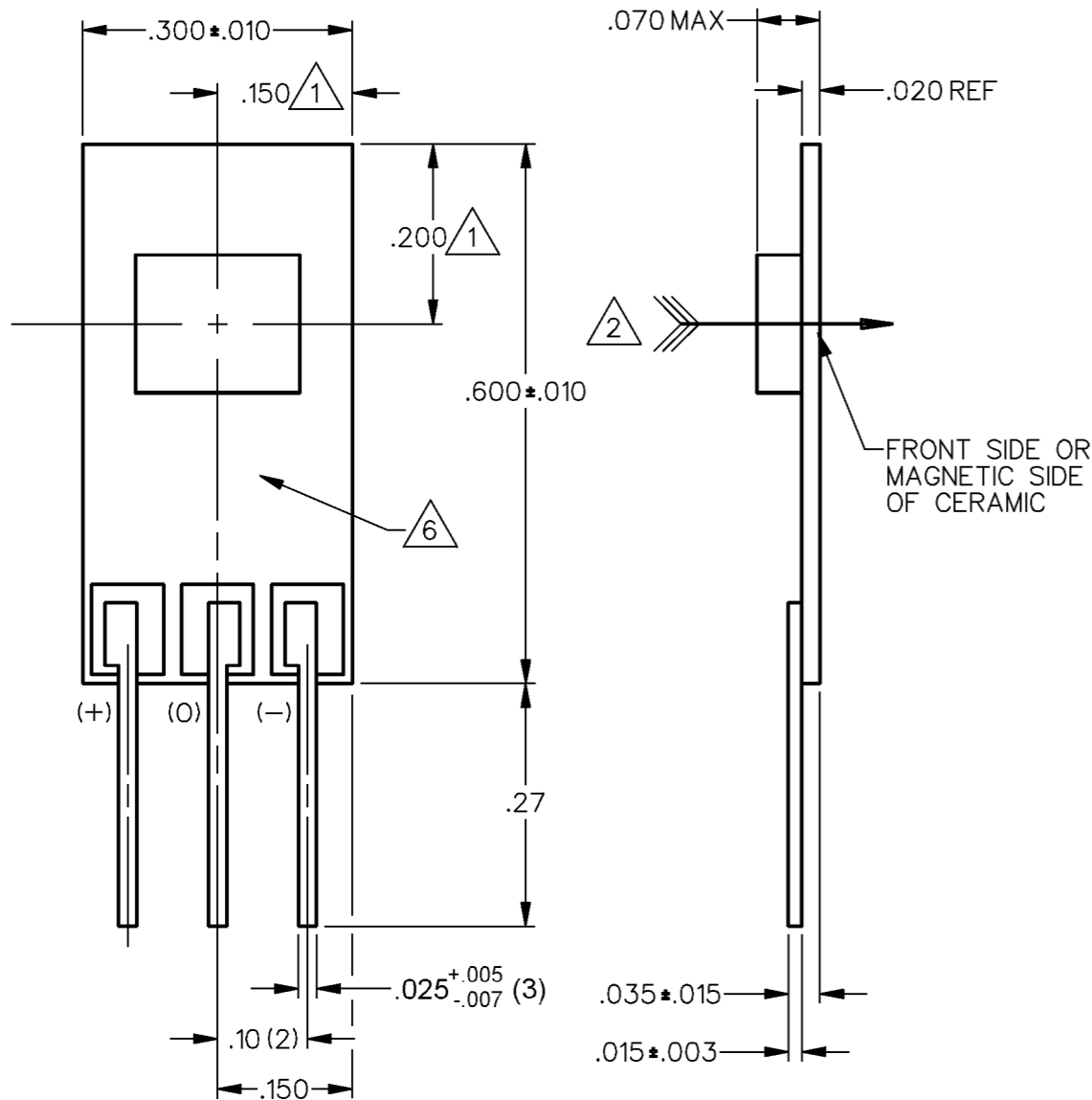
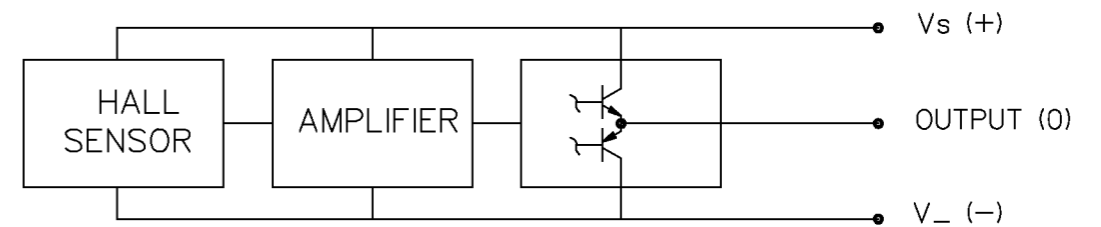
CATALOG LISTING  
**SS94A1E**

THIS DRAWING COVERS A PROPRIETARY ITEM AND IS THE PROPERTY OF MICRO SWITCH. A DIVISION OF HONEYWELL. THIS DRAWING IS NOT TO BE COPIED OR USED WITHOUT THE APPROVAL OF MICRO SWITCH

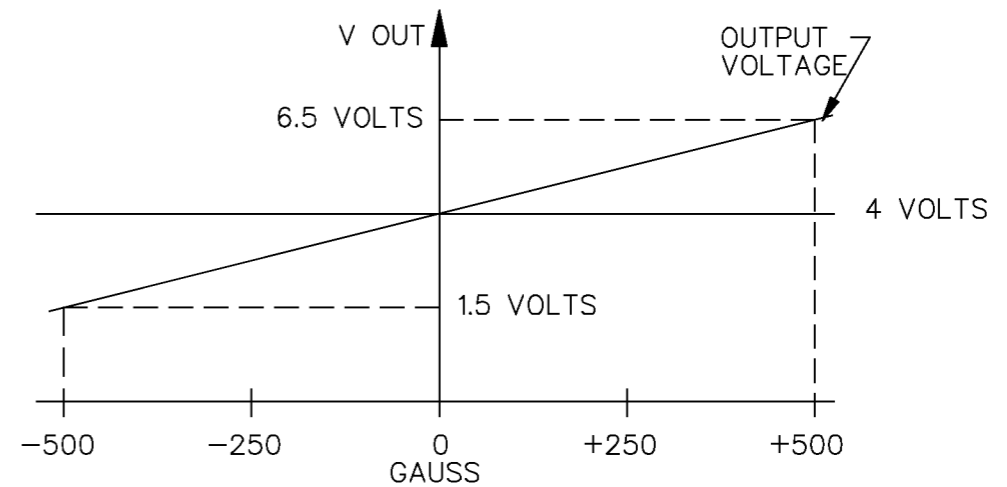
OPERATING CHARACTERISTICS

| PARAMETER                  | MIN   | TYP                 | MAX   | UNITS     | CONDITIONS/REMARKS                   |
|----------------------------|-------|---------------------|-------|-----------|--------------------------------------|
| SUPPLY VOLTAGE             | 6.6   | 8.0                 | 12.6  | VOLTS     | -40°C TO +125°C                      |
| SUPPLY CURRENT             |       | 13                  | 30    | mA        | MAX @ 12.6 V @ -40°C                 |
| OUTPUT CURRENT             |       |                     | 1     | mA        | SINKING OR SOURCING                  |
| OUTPUT SPAN                |       | .625 V <sub>S</sub> |       | VOLTS     | -500G TO +500G @ 25°C $\nabla$ 5     |
| SENSITIVITY                | 4.90  | 5.0                 | 5.10  | mV/g      | @ 8.0 V <sub>S</sub> & 25°C          |
| LINEARITY                  | -1.5  | -.8                 | 0     | % OF SPAN | DEV FROM STR LINE THRU -500 AND +500 |
| V <sub>OUT</sub> @ 0 GAUSS | 3.960 | 4.000               | 4.040 | VOLTS     | 25°C                                 |
| TEMP ERROR-NULL            | -.01  |                     | +.01  | %/°C      | -40°C TO +125°C                      |
| TEMP ERROR-GAIN            | -.02  |                     | +.02  | %/°C      | -40°C TO +125°C                      |

BLOCK DIAGRAM CURRENT SINKING OR SOURCING OUTPUT



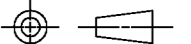
NOMINAL TRANSFER CHARACTERISTICS AT 8.0 VDC



NOTES

- ① CENTERLINE OF HALL CELL (IC) ONLY. THE LOCATION OF THE CERAMIC COVER IS NOT SPECIFIED
- ② THE + MAGNETIC FLUX IS IN THIS DIRECTION (THIS ASSUMES THE CONVENTION THAT THE DIRECTION OF THE EXTERNAL FLUX OF A MAGNET IS FROM THE NORTH TO THE SOUTH POLE OF THE MAGNET)
- 3 - THE DEVICE CANNOT BE DAMAGED BY MAGNETIC OVERDRIVE
- 4 - OUTPUT TYPE - RATIOMETRIC
- ⑤ THE OUTPUT IS CLAMPED AT 9.0 VDC MINIMUM, 9.5 VDC TYPICAL
- ⑥ ARTWORK TYPICAL

THIRD ANGLE PROJECTION



SCALE 5 : 1

DO NOT SCALE PRINT

UNLESS OTHERWISE SPECIFIED TOLERANCES ARE

- ONE PLACE (.0) ±.030
- TWO PLACE (.00) ±.015
- THREE PLACE (.000) ±.005
- ANGLES ±

WEIGHT



ANSI Y14.5M-1982 APPLIES

CATALOG LISTING  
**SS94A1E**  
PAGE 1 OF 1

ISSUE  
**M**  
5

REVISIONS  
A C072441  
J A S  
18 MAY 92  
B CO-  
95704  
DLM  
21 MAR 00  
C 0038694  
SSK  
14 APR 08  
D 0039911  
SS  
19 MAY 08

REPLACES X89800-SS  
RELEASE NO. PR-17167  
CHECK 19MAY08  
BLR  
CHECK 19MAY08  
CHECK 27 MAR 89  
T M M  
CHECK 24 MAR 89  
K A G

RASTER  
DRAWN