



Chipsmall Limited consists of a professional team with an average of over 10 year of expertise in the distribution of electronic components. Based in Hongkong, we have already established firm and mutual-benefit business relationships with customers from,Europe,America and south Asia,supplying obsolete and hard-to-find components to meet their specific needs.

With the principle of “Quality Parts,Customers Priority,Honest Operation,and Considerate Service”,our business mainly focus on the distribution of electronic components. Line cards we deal with include Microchip,ALPS,ROHM,Xilinx,Pulse,ON,Everlight and Freescale. Main products comprise IC,Modules,Potentiometer,IC Socket,Relay,Connector.Our parts cover such applications as commercial,industrial, and automotives areas.

We are looking forward to setting up business relationship with you and hope to provide you with the best service and solution. Let us make a better world for our industry!



## Contact us

Tel: +86-755-8981 8866 Fax: +86-755-8427 6832

Email & Skype: info@chipsmall.com Web: www.chipsmall.com

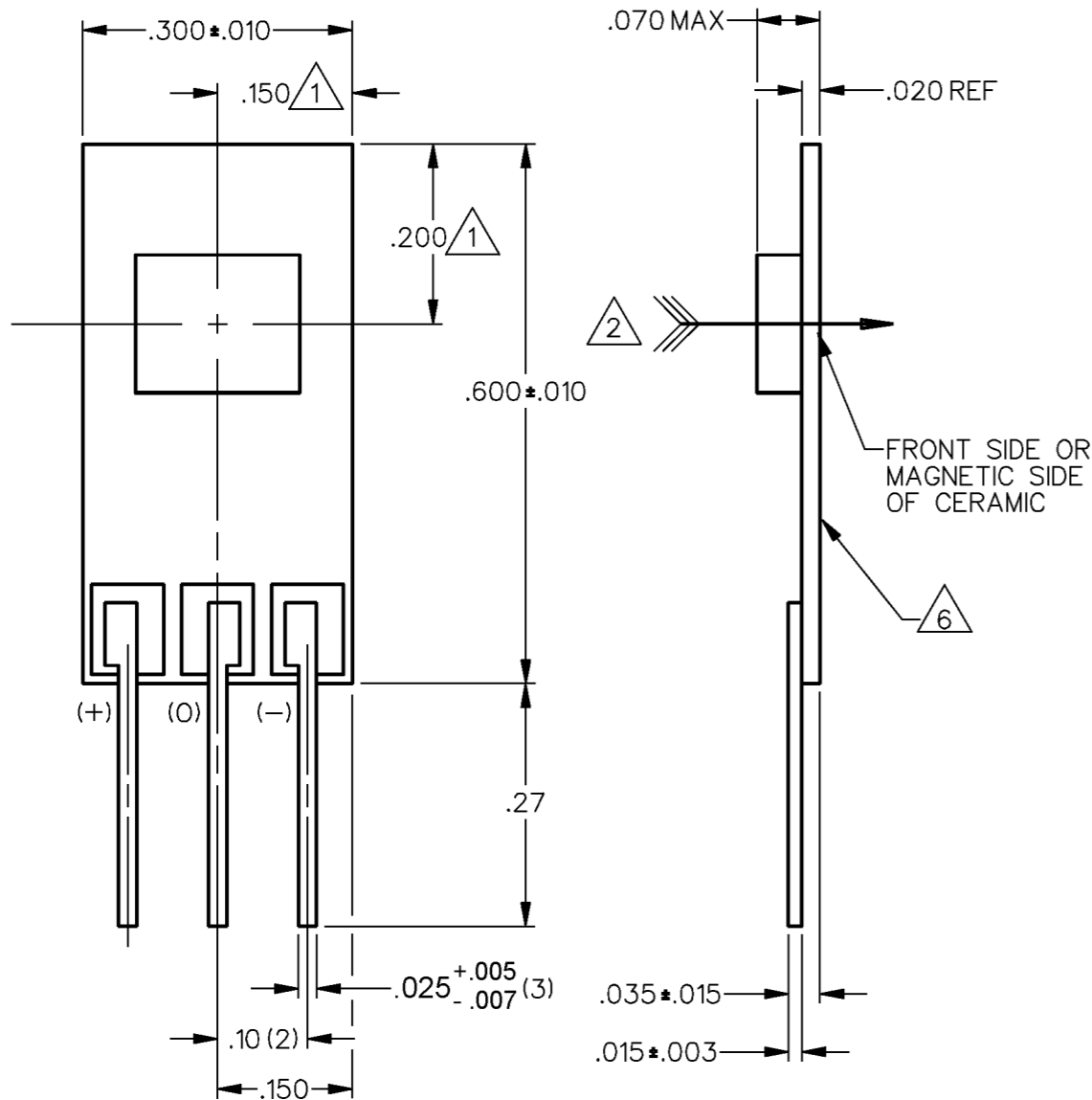
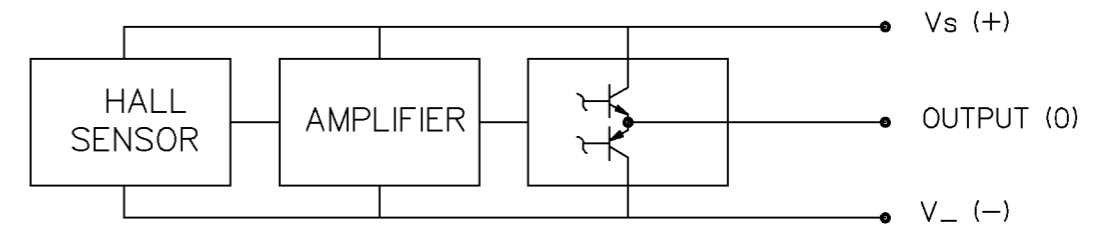
Address: A1208, Overseas Decoration Building, #122 Zhenhua RD., Futian, Shenzhen, China



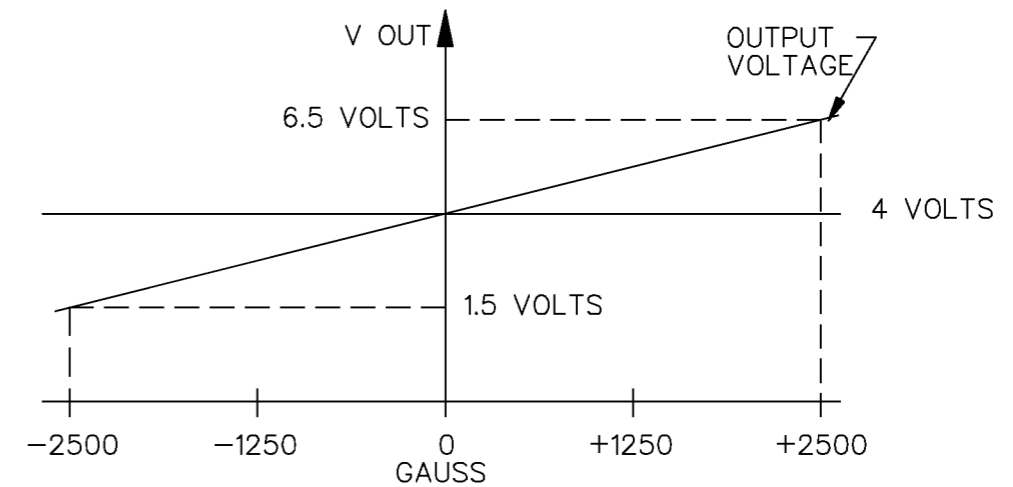
**OPERATING CHARACTERISTICS**

PARAMETER	MIN	TYP	MAX	UNITS	CONDITIONS/REMARKS
SUPPLY VOLTAGE	6.6	8.0	12.6	VOLTS	-40°C TO +125°C
SUPPLY CURRENT		13	30	mA	MAX @ 12.6 V @ -40°C
OUTPUT CURRENT			1	mA	SINKING OR SOURCING
OUTPUT SPAN		.625 V <sub>S</sub>		VOLTS	-2500G TO +2500G @ 25°C $\nabla$ 5
SENSITIVITY	.98	1.00	1.02	mV/g	@ 8.0 V <sub>S</sub> & 25°C
LINEARITY	-1.5	-.8	0	% OF SPAN	DEV FROM STR LINE THRU -2500 AND +2500
V <sub>OUT</sub> @ 0 GAUSS	3.960	4.000	4.040	VOLTS	25°C
TEMP ERROR-NULL	-.007		+.007	%/°C	-40°C TO +125°C
TEMP ERROR-GAIN	-.02		+.02	%/°C	-40°C TO +125°C

**BLOCK DIAGRAM CURRENT SINKING OR SOURCING OUTPUT**



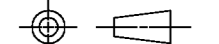
**NOMINAL TRANSFER CHARACTERISTICS AT 8.0 VDC**



**NOTES**

- 1 CENTERLINE OF HALL CELL (IC) ONLY. THE LOCATION OF THE CERAMIC COVER IS NOT SPECIFIED
- 2 THE + MAGNETIC FLUX IS IN THIS DIRECTION (THIS ASSUMES THE CONVENTION THAT THE DIRECTION OF THE EXTERNAL FLUX OF A MAGNET IS FROM THE NORTH TO THE SOUTH POLE OF THE MAGNET)
- 3 - THE DEVICE CANNOT BE DAMAGED BY MAGNETIC OVERDRIVE
- 4 - OUTPUT TYPE - RATIOMETRIC
- 5 THE OUTPUT IS CLAMPED AT 9.0 VDC MINIMUM, 9.5 VDC TYPICAL
- 6 THIS SIDE COATED WITH CONDUCTIVE MATERIAL WHICH IS ELECTRICALLY CONNECTED TO (-) TERMINAL

THIRD ANGLE PROJECTION



SCALE 5 : 1

DO NOT SCALE PRINT

**UNLESS OTHERWISE SPECIFIED TOLERANCES ARE**

ONE PLACE	(.0)	±.030
TWO PLACE	(.00)	±.015
THREE PLACE	(.000)	±.005
ANGLES		±

WEIGHT



CATALOG LISTING  
**SS94A2D**  
PAGE 1 OF 1  
REPLACES PR-16879  
ISSUE 6

REVISIONS

A	CO72441	J A S	19 MAY 92
B	CO73769	K A G	10 NOV 92
C	CO95704	DLM	22 MAR 00
D	0038690	PRS	14 APR 08
E	0039911	SS	19 MAY 08

RASTER

DRAWN

T M M 18 JAN 89

CHECK T M M 26 JAN 89

CHECK BLR 19 MAY 08

CHECK

RELEASE NO. PR-16879

REPLACES X90087-SS