



Chipsmall Limited consists of a professional team with an average of over 10 year of expertise in the distribution of electronic components. Based in Hongkong, we have already established firm and mutual-benefit business relationships with customers from,Europe,America and south Asia,supplying obsolete and hard-to-find components to meet their specific needs.

With the principle of “Quality Parts,Customers Priority,Honest Operation,and Considerate Service”,our business mainly focus on the distribution of electronic components. Line cards we deal with include Microchip,ALPS,ROHM,Xilinx,Pulse,ON,Everlight and Freescale. Main products comprise IC,Modules,Potentiometer,IC Socket,Relay,Connector.Our parts cover such applications as commercial,industrial, and automotives areas.

We are looking forward to setting up business relationship with you and hope to provide you with the best service and solution. Let us make a better world for our industry!



Contact us

Tel: +86-755-8981 8866 Fax: +86-755-8427 6832

Email & Skype: info@chipsmall.com Web: www.chipsmall.com

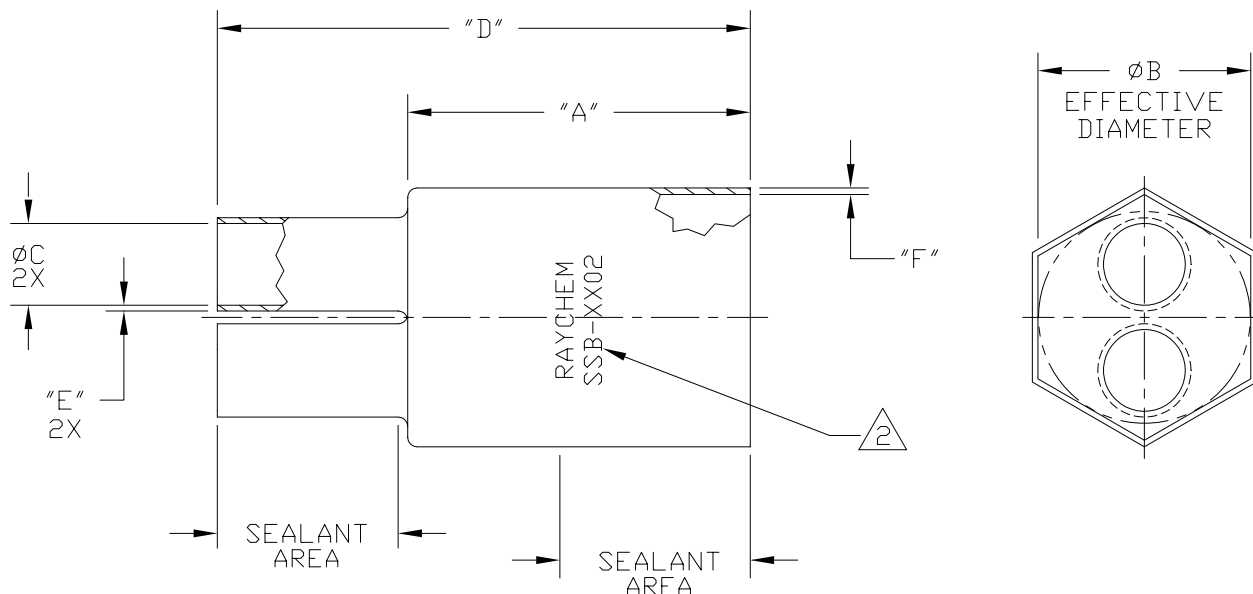
Address: A1208, Overseas Decoration Building, #122 Zhenhua RD., Futian, Shenzhen, China



THIS DRAWING AND THE INFORMATION SET FORTH HEREON ARE THE PROPERTY OF TYCO CORP. AND ARE TO BE HELD IN TRUST AND CONFIDENCE. PUBLICATION, DUPLICATION, DISCLOSURE OR USE FOR ANY PURPOSE NOT EXPRESSLY AUTHORIZED IN WRITING BY TYCO CORP. IS PROHIBITED.

REVISIONS

LTR	DESCRIPTION	DATE	APPROVED
C	REVISED PER DCR R050285	7/25/05	



PART NUMBER	ØB		ØC		"A" ±10%		"D" ±10%		"E" ±20%	"F" ±20%
	MIN EXP	MAX REC	MIN EXP	MAX REC	EXP	REC	EXP	REC	REC	REC
SSB-1202	1.60 [40,64]	.50 [12,7]	.50 [12,7]	.15 [3,81]	2.00 [50,8]	2.57 [65,28]	3.14 [79,76]	4.09 [103,89]	.08 [2,03]	.12 [3,05]
SSB-2002	2.00 [50,8]	1.50 [38,10]	.75 [19,05]	.37 [9,39]	2.85 [72,39]	3.67 [93,22]	5.32 [135,13]	6.56 [166,63]	.09 [2,29]	.10 [2,54]

NOTES:

1. MATERIAL: HEAT SHRINKABLE BOOT MATERIAL IN ACCORDANCE WITH -3 POLYOLEFIN THIS INCLUDES INTERNAL COATING OF FACTORY APPLIED NON-SETTING SEALANT. BOOTS ARE AVAILABLE WITHOUT SEALANT ON SPECIAL ORDER.

MARKING: PART TO BE MARKED AS SHOWN, REPLACE "X'S" WITH APPROPRIATE CHARACTERS (e.g. SSB-2002).

© 2004-2005 Tyco Electronics Corporation. All rights reserved

SPECIFICATION CONTROL DRAWING

UNLESS OTHERWISE SPECIFIED DIMENSIONS ARE IN INCHES. METRIC DIMENSIONS ARE IN BRACKETS.

DECIMALS

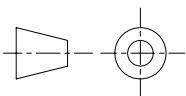
.XXX ± — [mm]
 .XX ± — [mm]
 .X ± — [mm]

ANGLES

.X ± —

DRAWN G. ROSITANO	DATE 9/20/95
CHECKED	DATE
APPROVED	DATE
APPROVED	DATE
CAD NAME R050285	

THIRD ANGLE PROJECTION



tyco **Raychem**
 Electronics

TYCO ELECTRONICS
 300 CONSTITUTION DRIVE
 MENLO PARK, CALIFORNIA 94025

TITLE

2-LEG
 STRAIGHT BOOTS

SIZE A	CODE IDENT. NO. 06090	DWG. NO. SSB-XX02	REV C
DO NOT SCALE THIS DWG		SHEET 1 OF 1	