



Chipsmall Limited consists of a professional team with an average of over 10 year of expertise in the distribution of electronic components. Based in Hongkong, we have already established firm and mutual-benefit business relationships with customers from,Europe,America and south Asia,supplying obsolete and hard-to-find components to meet their specific needs.

With the principle of “Quality Parts,Customers Priority,Honest Operation,and Considerate Service”,our business mainly focus on the distribution of electronic components. Line cards we deal with include Microchip,ALPS,ROHM,Xilinx,Pulse,ON,Everlight and Freescale. Main products comprise IC,Modules,Potentiometer,IC Socket,Relay,Connector.Our parts cover such applications as commercial,industrial, and automotives areas.

We are looking forward to setting up business relationship with you and hope to provide you with the best service and solution. Let us make a better world for our industry!



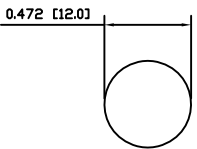
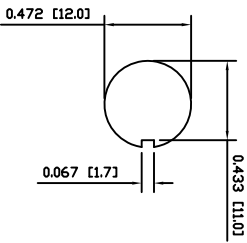
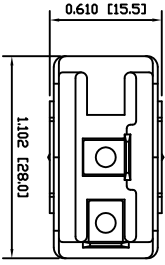
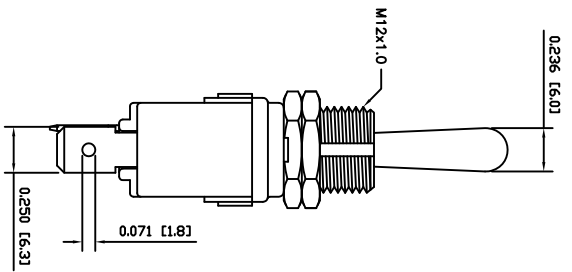
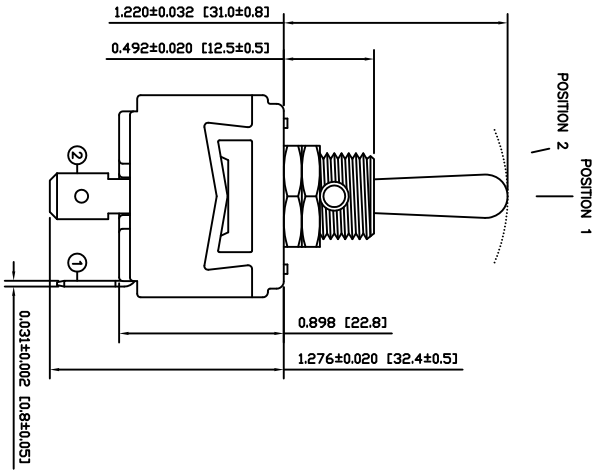
## Contact us

Tel: +86-755-8981 8866 Fax: +86-755-8427 6832

Email & Skype: info@chipsmall.com Web: www.chipsmall.com

Address: A1208, Overseas Decoration Building, #122 Zhenhua RD., Futian, Shenzhen, China





SUGGESTED PANEL CUTOUT

ALTERNATE PANEL CUTOUT

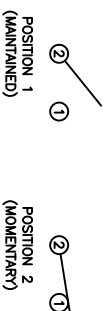
**MATERIALS**

- BODY: Phenolic, UL94 V-0
- ACTUATOR: Nickel Plated Brass
- BUSHING: Nickel Plated Brass
- HOUSING: Nickel Plated Steel
- HARDWARE: Nickel Plated Brass
- SPACER PLATE: Epoxy Board
- SPRING: Steel
- ACTUATOR PLUNGER: Phenolic, UL94 V-0
- MOBILE CONTACT BAR: Silver Plated Copper
- CENTER PIVOT: Silver Plated Copper
- CONTACTS: Silver Alloy Clad Copper
- TERMINALS: Brass

**SPECIFICATIONS**

- FUNCTION: 1P1T OFF-(ON)
  - RATINGS: ANSI/UL1054 and CAN/CSA C22.2 No.55 (E194579): 20A 125VAC [cURus] 15A 277VAC [cURus] 1.5HP 125/277VAC [cURus]
  - CONTACT RESISTANCE: Initial: 10mΩ Max. Insulation Resistance: 10MΩ Min.
  - DIELECTRIC STRENGTH: 1,500VAC for 1 Minute
  - OPERATING LIFE: 6,000 Cycles [cURus]
  - TEMPERATURE: Operating: 0°C to 85°C [cURus]
- APPROVALS: **ROHS COMPLIANT**

**SCHEMATIC**



ACTUATOR BODY	REV.	DATE	BY
B	10/06/10	CAB	
B	10/06/10	CAB	
B	10/06/09	CAB	
B	10/06/09	CAB	

THE INFORMATION CONTAINED IN THIS DOCUMENT IS PROPRIETARY TO E-SWITCH AND IS NOT TO BE COPIED OR TRANSMITTED

CONNECTED PANEL CUTOUT, SPECIFICATIONS, AND MATERIALS	REV.	DATE	BY
B	19133	10/06/10	CAB
A	19133	09/08/09	CAB
A	19133	09/08/09	CAB

INCHES [MILLIMETERS]	SCALE	PROJECTION
±0.008 [±0.2] / ±1'	SCALE	DRAWING NOT TO SCALE



ST144D00

DRAWING NUMBER	DATE	REVISION
34-ST144D00	JUNE 10, 2010	B