



Chipsmall Limited consists of a professional team with an average of over 10 year of expertise in the distribution of electronic components. Based in Hongkong, we have already established firm and mutual-benefit business relationships with customers from,Europe,America and south Asia,supplying obsolete and hard-to-find components to meet their specific needs.

With the principle of “Quality Parts,Customers Priority,Honest Operation,and Considerate Service”,our business mainly focus on the distribution of electronic components. Line cards we deal with include Microchip,ALPS,ROHM,Xilinx,Pulse,ON,Everlight and Freescale. Main products comprise IC,Modules,Potentiometer,IC Socket,Relay,Connector.Our parts cover such applications as commercial,industrial, and automotives areas.

We are looking forward to setting up business relationship with you and hope to provide you with the best service and solution. Let us make a better world for our industry!



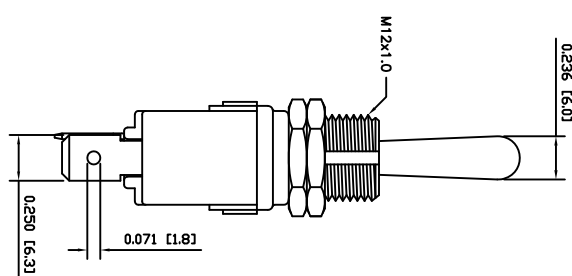
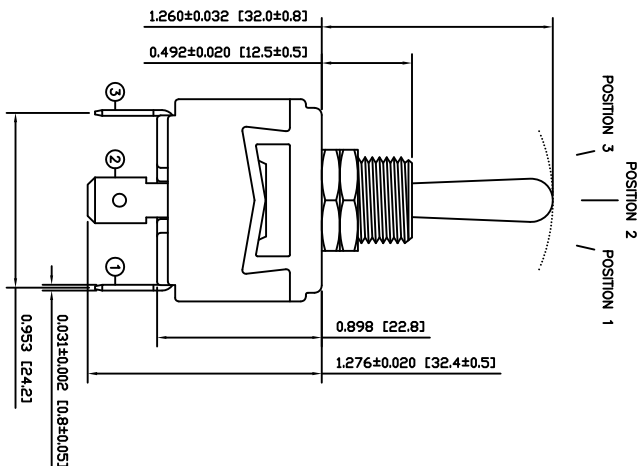
Contact us

Tel: +86-755-8981 8866 Fax: +86-755-8427 6832

Email & Skype: info@chipsmall.com Web: www.chipsmall.com

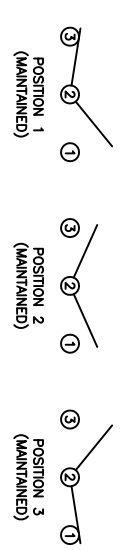
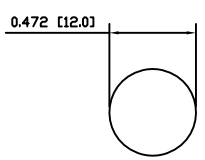
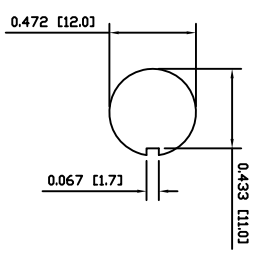
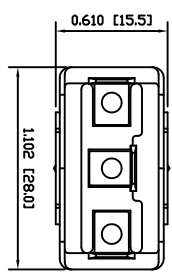
Address: A1208, Overseas Decoration Building, #122 Zhenhua RD., Futian, Shenzhen, China





- MATERIALS**
- BODY:** Phenolic, UL94 V-0
 - ACTUATOR:** Nickel Plated Brass
 - BUSHING:** Nickel Plated Brass
 - HOUSING:** Nickel Plated Steel
 - HARDWARE:** Nickel Plated Brass
 - SPACER PLATE:** Epoxy Board
 - SPRING:** Steel
 - ACTUATOR PLUNGER:** Phenolic, UL94 V-0
 - MOBILE CONTACT BAR:** Silver Plated Copper
 - CENTER PIVOT:** Silver Plated Copper
 - CONTACTS:** Silver Alloy Clad Copper
 - TERMINALS:** Brass

- SPECIFICATIONS**
- FUNCTION:** 1P1T ON-OFF-ON
 - RATINGS:** ANSI/UL1054 and CAN/CSA C22.2 No.55 (E194579): 20A 125VAC [cUrns] 15A 277VAC [cUrns] 2HP 125/277VAC [cUrns]
 - CONTACT RESISTANCE:** Initial: 10mΩ Max.
 - INSULATION RESISTANCE:** 10MΩ Min.
 - DIELECTRIC STRENGTH:** 1,500VAC for 1 Minute
 - OPERATING LIFE:** 6,000 Cycles [cUrns]
 - TEMPERATURE:** Operating: 0°C to 85°C [cUrns]
- APPROVALS:**
- RoHS COMPLIANT**



SCHEMATIC

INCHES [MILLIMETERS]

GENERAL TOLERANCES ±0.008 [±0.2] / ±1'

PROJECTION DRAWING NUMBER 34-ST145D00

DATE JUNE 10, 2010

REVISION B

E-SWITCH

LAMB INDUSTRIES

MODEL NUMBER ST145D00

ACTUATOR BODY	REV.	DATE	BY
B	10/08/10	CAB	
B	10/08/10	CAB	
B	10/08/09	CAB	
B	10/08/09	CAB	

THE INFORMATION CONTAINED IN THIS DOCUMENT IS PROPRIETARY TO E-SWITCH AND IS NOT TO BE COPIED OR TRANSMITTED

CONNECTED PANEL CUTOUT, SPECIFICATIONS, AND MATERIALS	REV.	DATE	BY
B	10/08/10	CAB	
A	10/08/09	CAB	

INITIALS	DATE	BY
	10/08/10	CAB
	09/08/09	CAB