



Chipsmall Limited consists of a professional team with an average of over 10 year of expertise in the distribution of electronic components. Based in Hongkong, we have already established firm and mutual-benefit business relationships with customers from,Europe,America and south Asia,supplying obsolete and hard-to-find components to meet their specific needs.

With the principle of “Quality Parts,Customers Priority,Honest Operation,and Considerate Service”,our business mainly focus on the distribution of electronic components. Line cards we deal with include Microchip,ALPS,ROHM,Xilinx,Pulse,ON,Everlight and Freescale. Main products comprise IC,Modules,Potentiometer,IC Socket,Relay,Connector.Our parts cover such applications as commercial,industrial, and automotives areas.

We are looking forward to setting up business relationship with you and hope to provide you with the best service and solution. Let us make a better world for our industry!



## Contact us

Tel: +86-755-8981 8866 Fax: +86-755-8427 6832

Email & Skype: info@chipsmall.com Web: www.chipsmall.com

Address: A1208, Overseas Decoration Building, #122 Zhenhua RD., Futian, Shenzhen, China



**NEW**



microSD™ Small Memory Card Connector

CONNECTOR

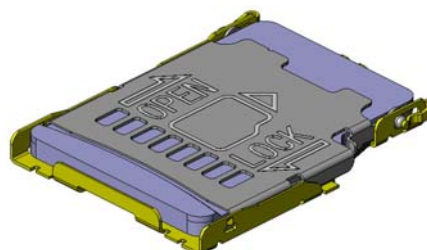
MB-0195-3

January 2012

# ST1- G / T Series



**RoHS Compliant**



Images of Type G

The ST1 Series is a one-piece type connector for microSD™ memory cards. It is a low-profile, high-density, SMT mounted connector which is compatible with the microSD™ card used in a variety of portable devices and standardized by the SDA ( SD Card Association).

\* microSD™ is a trademark of SD Card Association.

## Features

- Push-slide, hinge type connector for microSD™ small memory card.
- Available with card insertion detection switch (T type), and without (G type).
- Shield feature is secured by 4 ground connection points on hinge cover.
- Slim design with 1.4mm height, 15.5mm depth, 11.9mm width.
- Lock structure to prevent the cover from opening when dropped.

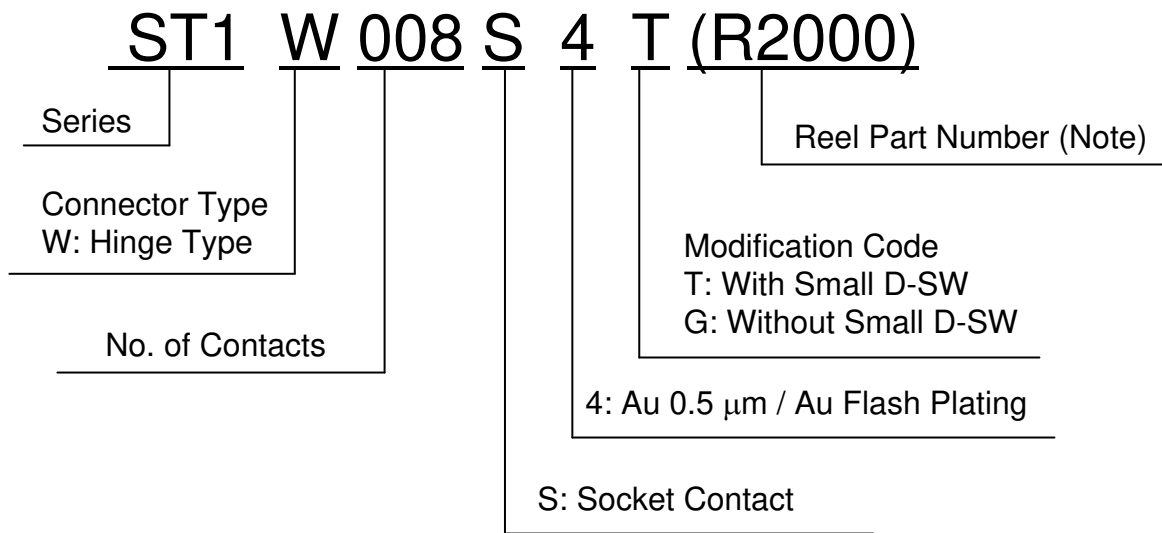
## General Specifications

- |  |  |
|--|--|
| ■ No. of Contacts: 8 position                                  | ■ Rated Current: 0.5A per pin            |
| ■ Contact Resistance: 100m ohm max.                            | ■ Rated Voltage: 10V per pin             |
| ■ Dielectric Withstanding Voltage :<br>AC500Vr.m.s. per minute | ■ Insulation Resistance: 1,000M ohm min. |
| ■ Operating Temperature:<br>-25 Deg. C to +85 Deg. C           | ■ Lifetime: 10,000 insertions            |
| ■ Storage Temperature:<br>-10 Deg. C to +60 Deg. C             | ■ Temperature Rise: 30 Deg. C rise max.  |

Materials and Finishes

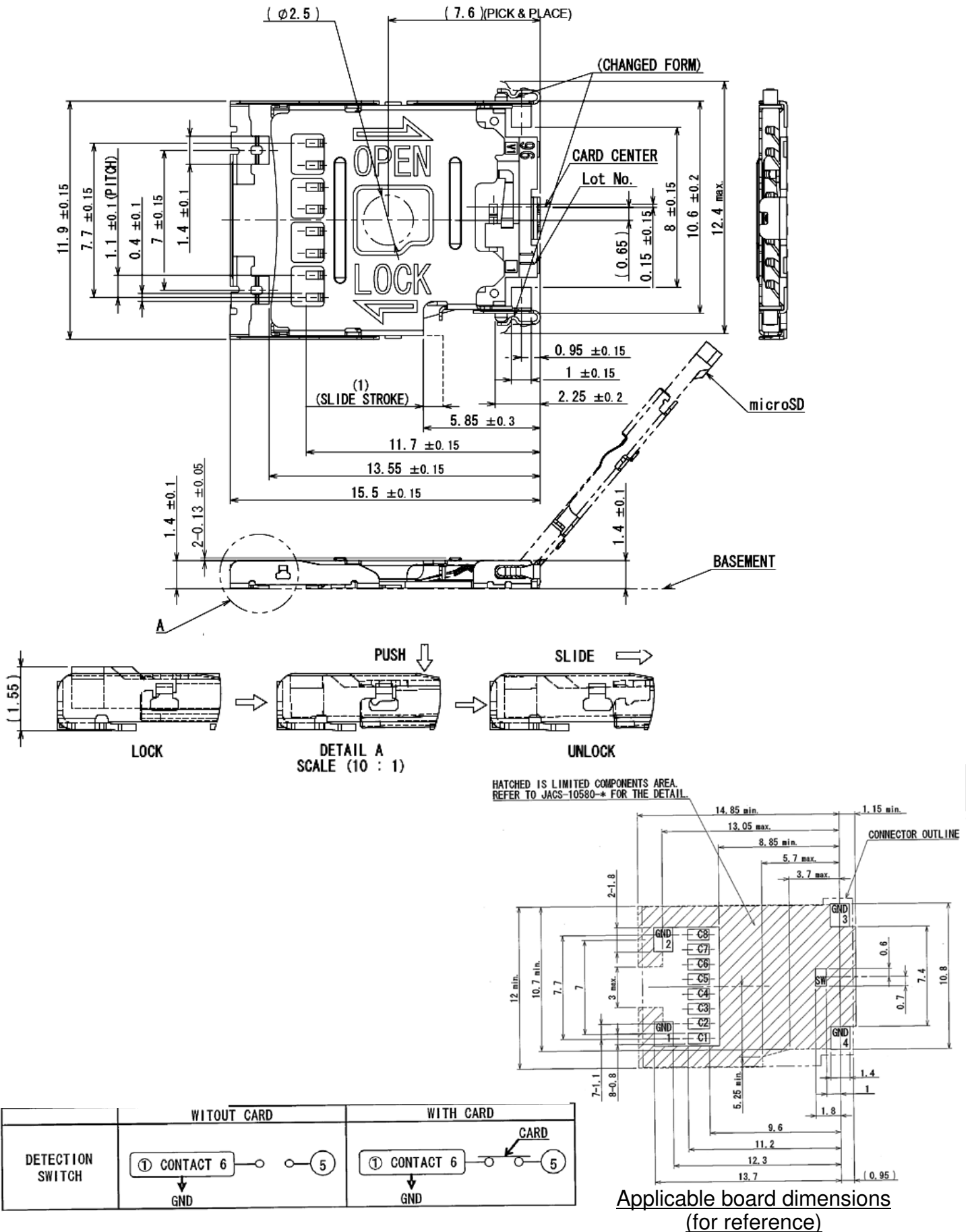
Component	Material / Finish
Contact	Copper alloy / Contact Area: 0.5µm min. Au plating over Ni Terminal Area: Au flash plating over Ni
Housing	Synthetic resin / None
Cover	Stainless steel / None (Terminal Area: same as contact)

Ordering Information



Part Number	SJ Drawing
ST1W008S4T	SJ111744

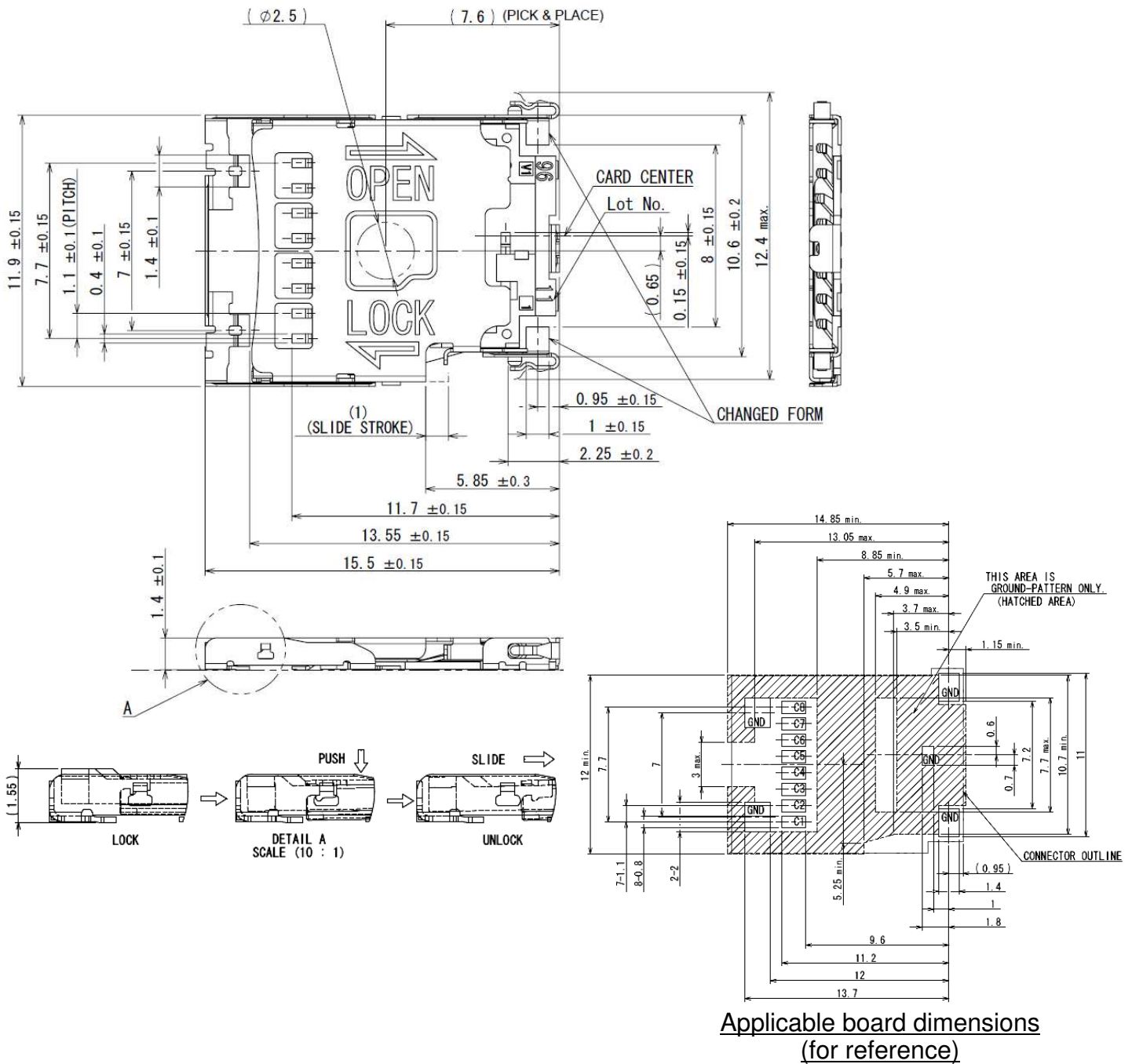
Unit: mm





Part Number	SJ Drawing
ST1W008S4G	SJ109285

Unit: mm



Applicable board dimensions (for reference)

Note: An embossed tape reel contains 2,000 pieces.

Please contact us for details on embossed tape specifications.

**Japan Aviation Electronics Industry, Limited**  
 Product Marketing Division  
 Aobadai Building, 3-1-19, Aobadai, Meguro-ku, Tokyo 153-8539  
 Phone: +81-3-3780-2787 FAX: +81-3-3780-2946

**Notice:** Products shown in this brochure are made for the applications listed below. However, if the above-mentioned products are to be used in aerospace devices, marine cable-connection devices, atomic power control systems, medical equipment for life-support systems, or any other specific application requiring extremely high reliability, please contact JAE for further information.  
 Recommended applications: computers, office machines, measuring devices, telecommunication devices (terminals, mobile devices), AV devices, household applications, FA devices, etc.