



Chipsmall Limited consists of a professional team with an average of over 10 year of expertise in the distribution of electronic components. Based in Hongkong, we have already established firm and mutual-benefit business relationships with customers from,Europe,America and south Asia,supplying obsolete and hard-to-find components to meet their specific needs.

With the principle of “Quality Parts,Customers Priority,Honest Operation,and Considerate Service”,our business mainly focus on the distribution of electronic components. Line cards we deal with include Microchip,ALPS,ROHM,Xilinx,Pulse,ON,Everlight and Freescale. Main products comprise IC,Modules,Potentiometer,IC Socket,Relay,Connector.Our parts cover such applications as commercial,industrial, and automotives areas.

We are looking forward to setting up business relationship with you and hope to provide you with the best service and solution. Let us make a better world for our industry!



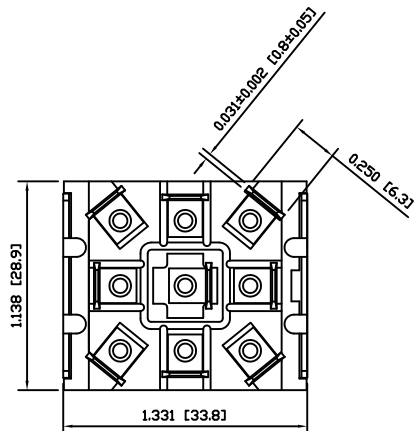
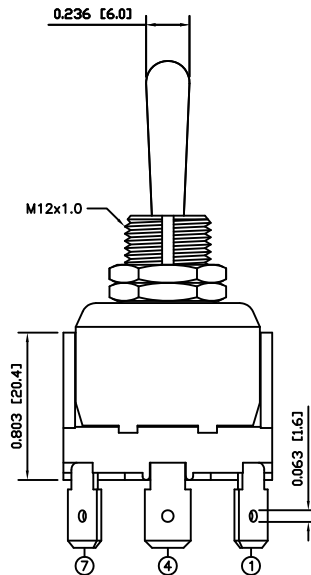
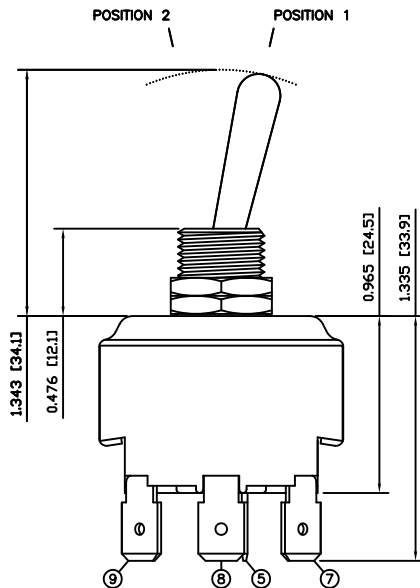
Contact us

Tel: +86-755-8981 8866 Fax: +86-755-8427 6832

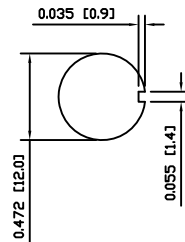
Email & Skype: info@chipsmall.com Web: www.chipsmall.com

Address: A1208, Overseas Decoration Building, #122 Zhenhua RD., Futian, Shenzhen, China

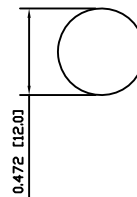




SUGGESTED PANEL CUTOUT



ALTERNATE PANEL CUTOUT



MATERIALS

BODY:
Phenolic, UL94 V-0

ACTUATOR:
Nickel Plated Brass

BUSHING:
Nickel Plated Brass

HOUSING:
Stainless Steel

HARDWARE:
Nickel Plated Steel

FUNCTION PLATE:
Stainless Steel

SPACER PLATE:
Laminate Board

SPRING:
Steel

PLUNGER:
Nylon

MOBILE CONTACT:
Silver Plated Copper

MOBILE CONTACT PIVOT:
Silver Plated Copper

CONTACTS:
Silver Alloy Clad Copper

TERMINALS:
Brass

SPECIFICATIONS

FUNCTION:
3P2T ON-ON

RATINGS:
ANSI/UL1054 and CAN/CSA C22.2 No.55 (E194579):
24A 125VAC [cURus]
15A 277VAC [cURus]
2HP 125/277VAC [cURus]

CONTACT RESISTANCE:
Initial: 50mΩ Max. at 50VAC

INSULATION RESISTANCE:
800MΩ Min. at 500VDC

DIELECTRIC STRENGTH:
1,500VAC for 1 Minute

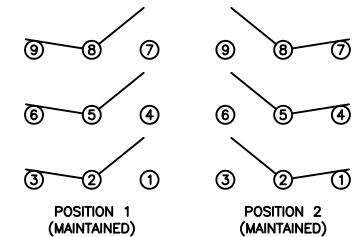
OPERATING LIFE:
6,000 Cycles [cURus]

TEMPERATURE:
Operating: -20°C to 85°C [cURus]

APPROVALS:



SCHEMATIC

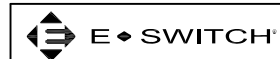


ACTUATOR	A	08/08/06	CAB
BODY	A	08/08/06	CAB
MATERIALS	A	08/08/06	CAB
SPECIFICATIONS	A	08/08/06	CAB
REFERENCE	REV.	DATE	BY

THE INFORMATION CONTAINED IN THIS DOCUMENT IS PROPRIETARY TO E-SWITCH AND IS NOT TO BE COPIED OR TRANSFERRED

A	INITIAL RELEASE	PCRD0051	08/08/06	CAB
REV.	DESCRIPTION	PCR	DATE	DRAWN BY

DIMENSIONS	INCHES [MILLIMETERS]
GENERAL TOLERANCES	±0.020 [±0.5] / ±1°
SCALE	DRAWING NOT TO SCALE



ST34SE00

DRAWING NUMBER	DATE	REVISION
34-ST34SE00	AUGUST 6, 2009	A