



Chipsmall Limited consists of a professional team with an average of over 10 year of expertise in the distribution of electronic components. Based in Hongkong, we have already established firm and mutual-benefit business relationships with customers from,Europe,America and south Asia,supplying obsolete and hard-to-find components to meet their specific needs.

With the principle of “Quality Parts,Customers Priority,Honest Operation,and Considerate Service”,our business mainly focus on the distribution of electronic components. Line cards we deal with include Microchip,ALPS,ROHM,Xilinx,Pulse,ON,Everlight and Freescale. Main products comprise IC,Modules,Potentiometer,IC Socket,Relay,Connector.Our parts cover such applications as commercial,industrial, and automotives areas.

We are looking forward to setting up business relationship with you and hope to provide you with the best service and solution. Let us make a better world for our industry!



## Contact us

Tel: +86-755-8981 8866 Fax: +86-755-8427 6832

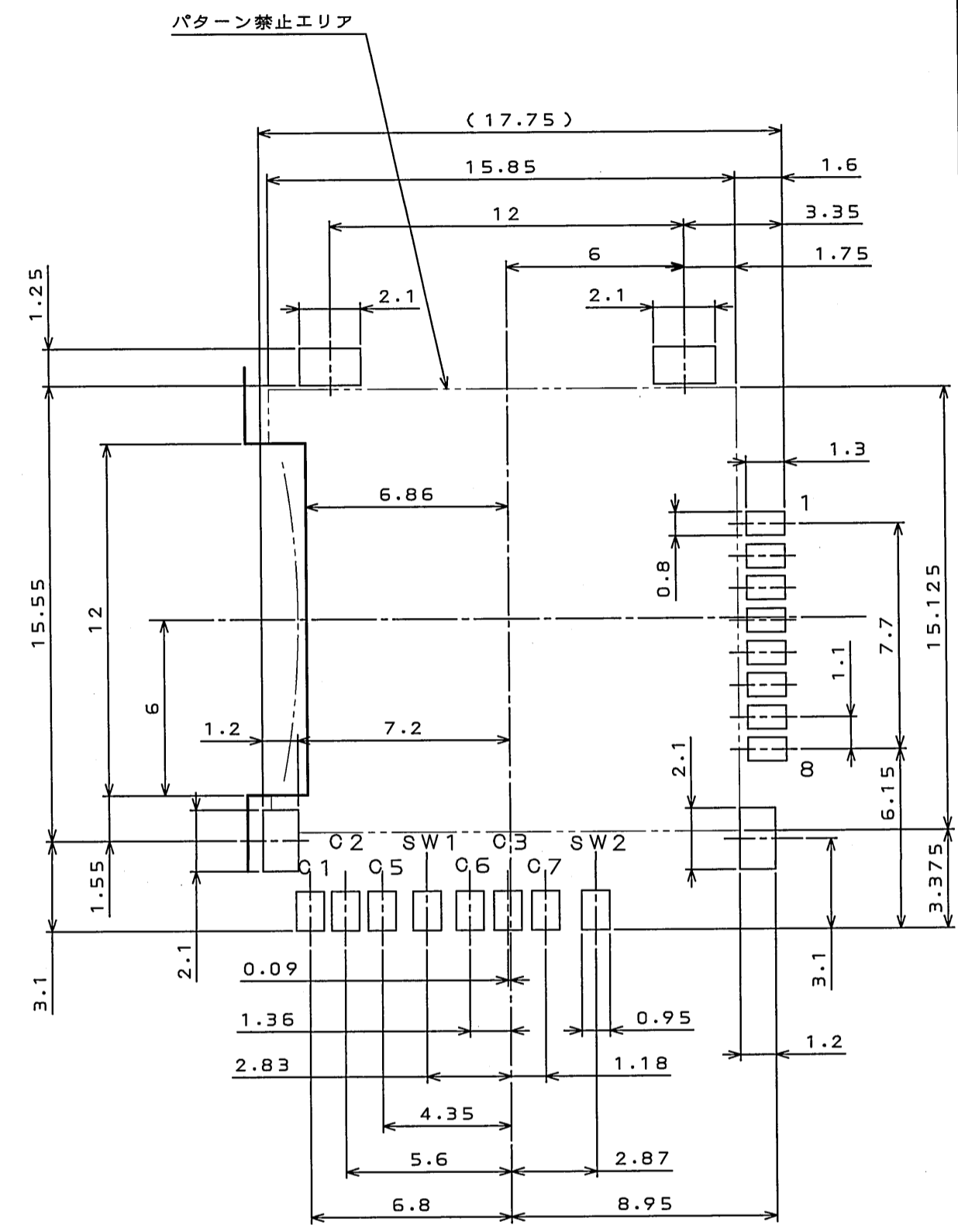
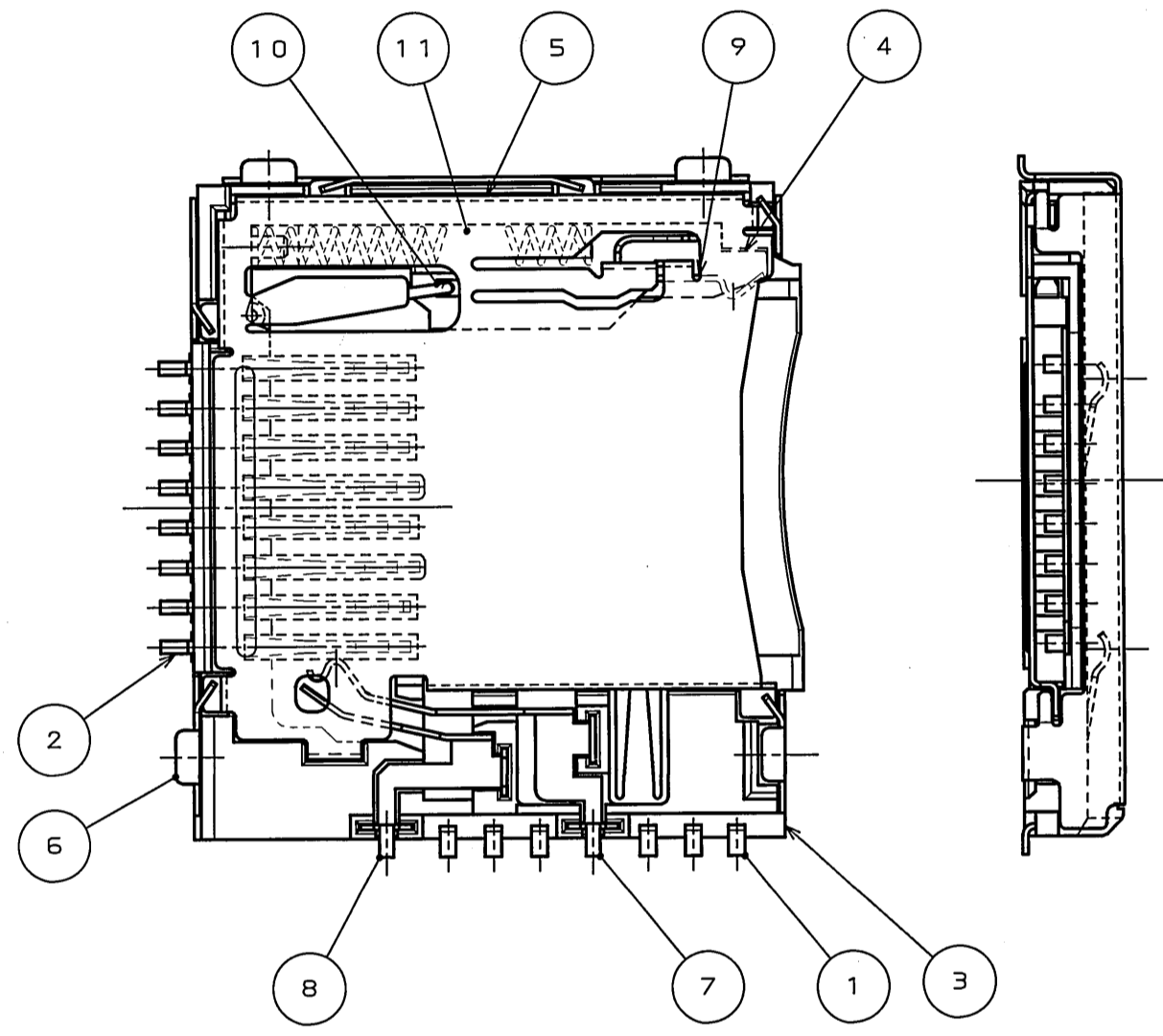
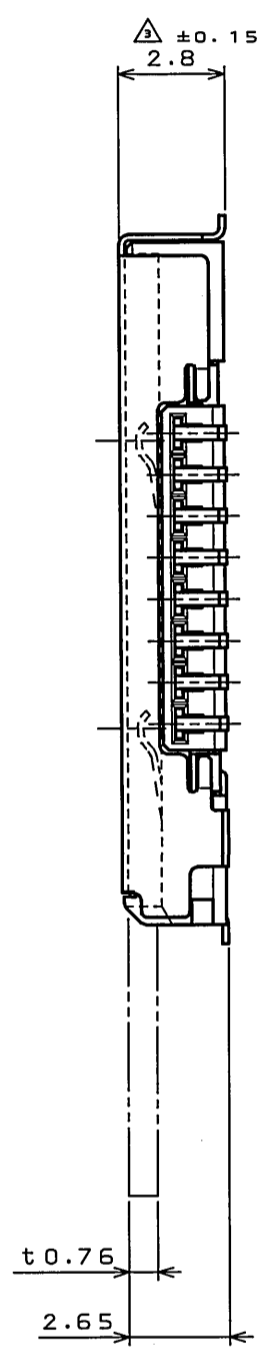
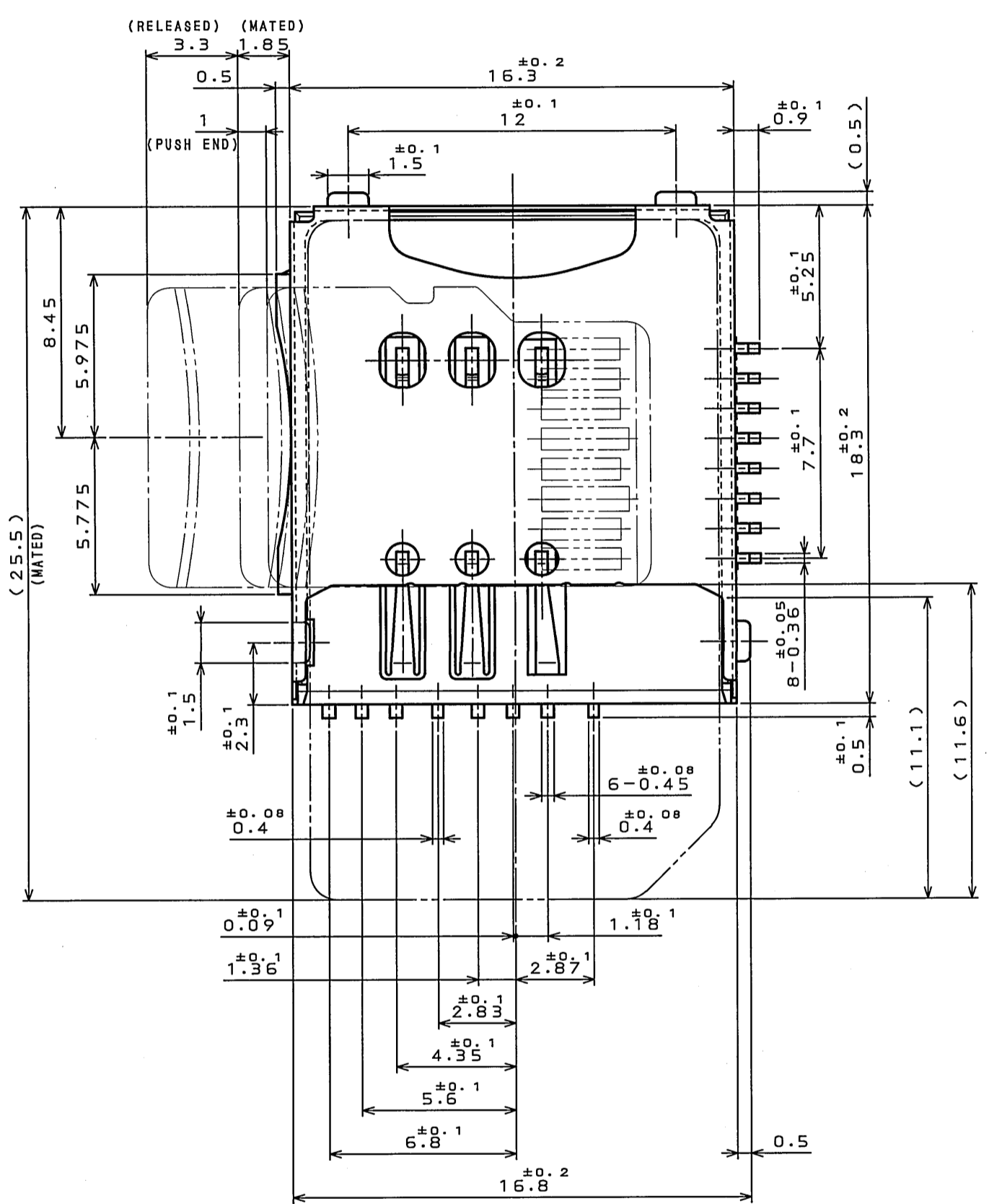
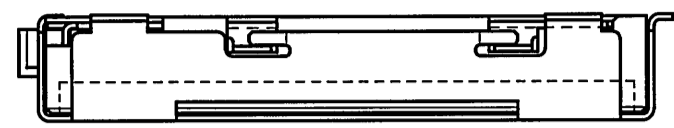
Email & Skype: info@chipsmall.com Web: www.chipsmall.com

Address: A1208, Overseas Decoration Building, #122 Zhenhua RD., Futian, Shenzhen, China



SJ107381  
(ON DRAWING)号图面

版数 REV.	年月日 DATE	図番 CON NO.	変更内容 DESCRIPTION	製図 DR.	担当 CHK.	承認 APPD.	承認 APPD.
2	26.Apr.2007	062888	REVISED FORM	H.KAMATA	A.NATORI		A.NATORI
3	21.May.2007	063038	ADDED TOLERANCE	H.KAMATA	A.NATORI		A.NATORI



APPLICABLE P.C.B. DIMENSION (REF.)  
適合基板寸法 (参考)

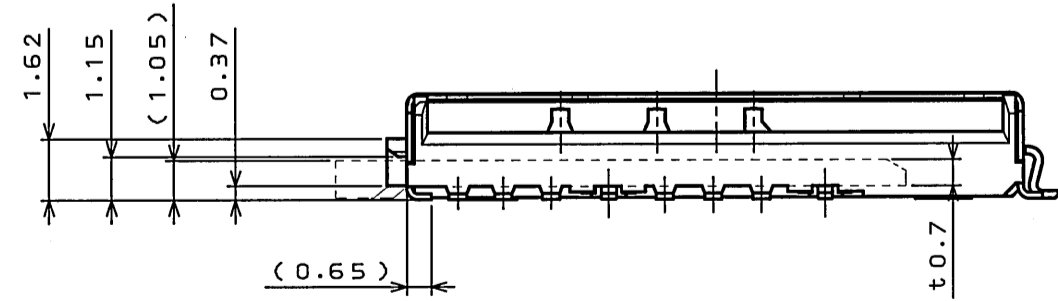


TABLE 1. CIRCUIT (REF.)

	WITHOUT CARD	CARD MATED
DETECTION SWITCH	7 - 8	7 - 8
	VGND	VGND

11	SPRING	1	SWPB	NI PLATING	
10	CAM FOLLOWER	1	STAINLESS		
9	LOCK	1	STAINLESS		
8	DETECTION SWITCH 2	1	COPPER ALLOY	CONTACTING AREA: GOLD OVER NICKEL TERMINAL AREA: GOLD FLASH OVER NICKEL	
7	DETECTION SWITCH 1	1	COPPER ALLOY	CONTACTING AREA: GOLD OVER NICKEL TERMINAL AREA: GOLD FLASH OVER NICKEL	
6	COVER FRAME	1	STAINLESS	TERMINAL AREA: GOLD FLASH OVER NICKEL	
5	COVER FRAME	1	STAINLESS		
4	EJECT LEVER	1	GLASS FILLED NY		
3	HOUSING	1	GLASS FILLED LCP		UL94 V-0
2	CONTACT (microSD)	8	COPPER ALLOY	CONTACTING AREA: GOLD OVER NICKEL TERMINAL AREA: GOLD FLASH OVER NICKEL	
1	CONTACT (SIM)	6	COPPER ALLOY	CONTACTING AREA: GOLD OVER NICKEL TERMINAL AREA: GOLD FLASH OVER NICKEL	
符号 NO.	名称 DESCRIPTION	個数 QTY.	材料 MATERIAL	仕上 FINISH	備考 REMARKS
仕様書 (SPECIFICATION) JAGS-10416		第1版 (ORIGINAL DATE) 27.Mar.2007		尺度 (SCALE) 5:1	シリーズ (SERIES) ST5
公差 (GENERAL TOLERANCE)		製図 DR. H.KAMATA		名称 (TITLE) ST5S014V4A	
寸法 (DIMENSION)		担当 CHK. A.NATORI		製図 DR. H.KAMATA	
角度 (ANGLES)		承認 APPD. A.NATORI		承認 APPD. A.NATORI	
. × ±0.8					
. × × ±0.4					
. × × × ±0.1					
. × × × × ±					
		質量 (MASS)		図面番号 (DRAWING NO.) SJ107381	

DOF-0-213F (05.08)

