



Chipsmall Limited consists of a professional team with an average of over 10 year of expertise in the distribution of electronic components. Based in Hongkong, we have already established firm and mutual-benefit business relationships with customers from,Europe,America and south Asia,supplying obsolete and hard-to-find components to meet their specific needs.

With the principle of “Quality Parts,Customers Priority,Honest Operation,and Considerate Service”,our business mainly focus on the distribution of electronic components. Line cards we deal with include Microchip,ALPS,ROHM,Xilinx,Pulse,ON,Everlight and Freescale. Main products comprise IC,Modules,Potentiometer,IC Socket,Relay,Connector.Our parts cover such applications as commercial,industrial, and automotives areas.

We are looking forward to setting up business relationship with you and hope to provide you with the best service and solution. Let us make a better world for our industry!



Contact us

Tel: +86-755-8981 8866 Fax: +86-755-8427 6832

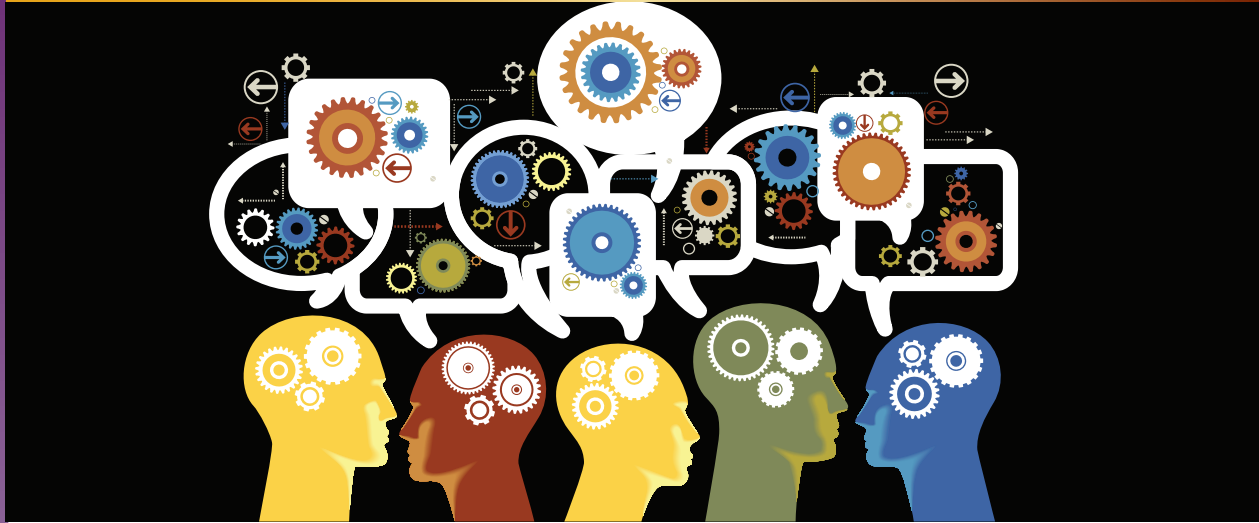
Email & Skype: info@chipsmall.com Web: www.chipsmall.com

Address: A1208, Overseas Decoration Building, #122 Zhenhua RD., Futian, Shenzhen, China



Amulet Technologies

7" Resistive GEMmodule™



OVERVIEW

Amulet's Resistive 7" GEMmodule™ is a production ready solution that allows embedded product manufacturers to implement a great looking Graphical User Interface in record time, regardless of the size and speed of their microprocessor. The module can be programmed using GEMstudio™, the most flexible GUI development software in the embedded space. Customers can create and modify their GUI at any time, allowing for as many design iterations as necessary to get the look and feel that is just right for their products.

Module Components:

- 7" WVGA TFT LCD (800x480) with White LED Backlight
- Integrated Resistive Touch Panel
- Controller Board with Amulet's Graphical OS Chip™
- On-Board Memory -64Mb Serial Flash for Storing GUI Pages



Features

- Quick and flexible GUI design with GEMstudio™ software development tool
- Color Depth - up to 24bit + 8bit alpha; for best performance, 8-bit palette is recommended
- Graphics supported include: GIF, JPEG, PNG, and more
- 24 pin interconnect for serial interface(s) - USB, 3.3vUART, RS232

Benefits

- Add a great looking GUI to an embedded application regardless of host microprocessor size or speed
- Complete your projects in days, not years and make changes in minutes, not months
- Offload processing power from your host micro, no matter what size
- Avoid royalties with Amulet's Graphical OS



Amulet
Technologies



Module Specifications:

| | |
|----------------------------|---|
| Part Number | MK-070R |
| Display Type | 7" WVGA TFT LCD Display |
| Display Resolution | 800 x 480 (WQVGA) |
| Backlight Type | 24 White LED |
| Backlight Control | PWM |
| Viewing Angle | 12 o'clock |
| Operating Temperature | -20°C to 70°C |
| Power Requirement | 5Vdc (± 0.25 v) @ 300mA |
| Communication Type | Amulet Protocol via 3.3V UART, USB, RS232 |
| Data Rate (BAUD) | 9,600/19,200/57,600/115,200 bps |
| | |
| Development Kits Available | STK-070R |



Amulet
Technologies

www.amulettechnologies.com

Want More Information?

Call or email us today! Also visit us on the Web at www.amulettechnologies.com for the latest data sheets, programmer's guide, software updates and more.

Amulet Display Modules are available through Amulet franchised distributors. Visit our website for direct "order now" links.

Campbell, California, USA
Sales@AmuletTechnologies.com
(408) 374-4956