



Chipsmall Limited consists of a professional team with an average of over 10 year of expertise in the distribution of electronic components. Based in Hongkong, we have already established firm and mutual-benefit business relationships with customers from,Europe,America and south Asia,supplying obsolete and hard-to-find components to meet their specific needs.

With the principle of “Quality Parts,Customers Priority,Honest Operation,and Considerate Service”,our business mainly focus on the distribution of electronic components. Line cards we deal with include Microchip,ALPS,ROHM,Xilinx,Pulse,ON,Everlight and Freescale. Main products comprise IC,Modules,Potentiometer,IC Socket,Relay,Connector.Our parts cover such applications as commercial,industrial, and automotives areas.

We are looking forward to setting up business relationship with you and hope to provide you with the best service and solution. Let us make a better world for our industry!



## Contact us

Tel: +86-755-8981 8866 Fax: +86-755-8427 6832

Email & Skype: info@chipsmall.com Web: www.chipsmall.com

Address: A1208, Overseas Decoration Building, #122 Zhenhua RD., Futian, Shenzhen, China





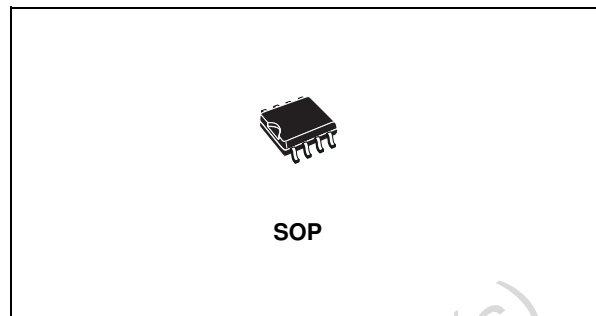
# STLVDS9637

## HIGH SPEED DIFFERENTIAL LINE RECEIVERS

- MEETS OR EXCEEDS THE REQUIREMENTS OF ANSI TIA/EIA-644 STANDARD
- OPERATES WITH A SINGLE 3.3V SUPPLY
- DESIGNED FOR SIGNALING RATE UP TO 400Mbps
- DIFFERENTIAL INPUT THRESHOLDS  $\pm 100\text{mV}$  MAX
- TYPICAL PROPAGATION DELAY TIME OF 2.5ns
- POWER DISSIPATION 60mW TYPICAL PER RECEIVER AT 200MHz
- LOW VOLATGE TTL (LVTTTL) LOGIC OUTPUT LEVELS
- OPEN CIRCUIT FAIL SAFE
- ESD PROTECTION:  
7KV RECEIVER PINS  
3KV ALL PINS VS GND

### DESCRIPTION

The STLVDS9637, is a differential line receiver that implements the electrical characteristics of low voltage differential signaling (LVDS). This signaling technique lowers the output voltage levels of 5V differential standard levels (such as TIA/EIA-422B) to reduce the power, increase the switching speeds and allow operations with a 3.3V supply rail. This differential receiver provides a



valid logical output state with a 3.3V supply rail. It also provides a valid logical output state with a  $\pm 100\text{mV}$  differential input voltage within the input common mode voltage range. The input common mode voltage allows 1V of ground potential difference between two LVDS nodes.

The intended application of this device and signalling technique is both point-to-point and multichip data transmission over controlled impedance media approximately  $100\Omega$ . The transmission media may be printed circuit board traces, backplanes or cables. The ultimate rate and distance of data transfer depend upon the attenuation characteristics of the media and noise coupling to the environment.

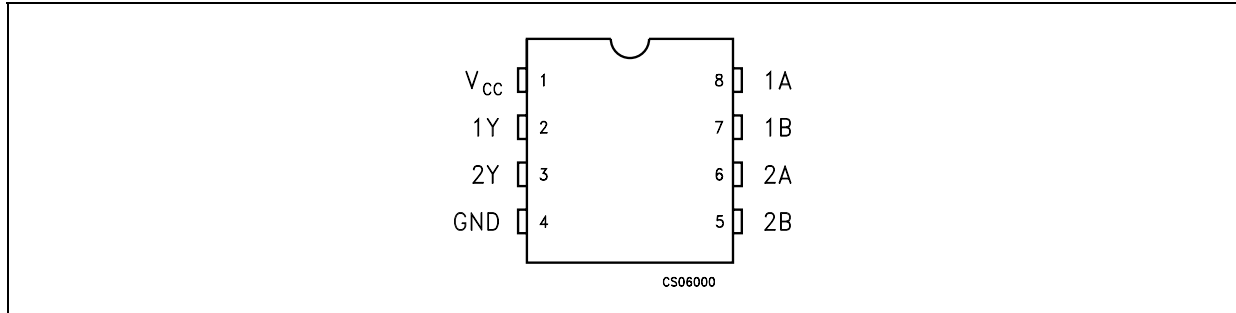
The STLVDS9637 version is characterized for operation from  $-40^{\circ}\text{C}$  to  $85^{\circ}\text{C}$ .

### ORDERING CODES

| Type          | Temperature Range | Package            | Comments                           |
|---------------|-------------------|--------------------|------------------------------------|
| STLVDS9637BD  | -40 to 85 °C      | SO-8 (Tube)        | 100parts per tube / 40tube per box |
| STLVDS9637BDR | -40 to 85 °C      | SO-8 (Tape & Reel) | 2500 parts per reel                |

# STLVDS9637

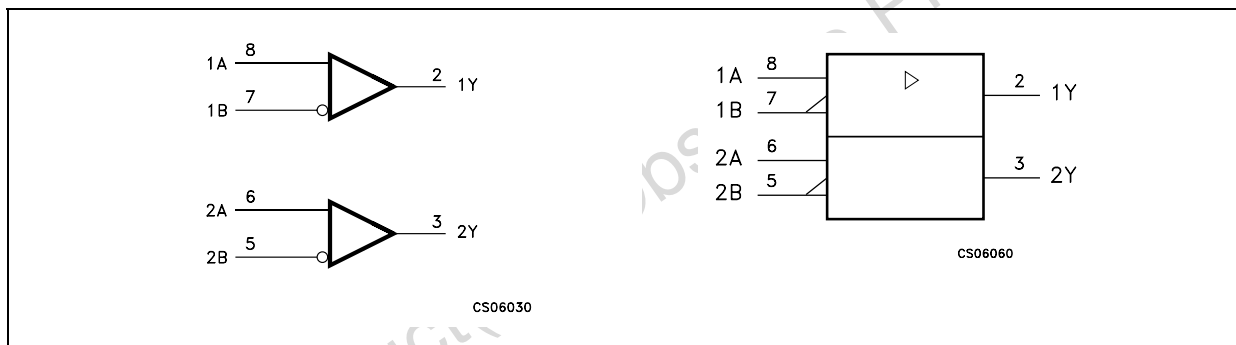
## PIN CONFIGURATION



## PIN DESCRIPTION

| PIN N° | SYMBOL          | NAME AND FUNCTION       |
|--------|-----------------|-------------------------|
| 2, 3   | 1Y to 2Y        | Receiver Outputs        |
| 5, 7   | 1B to 2B        | Negated Receiver Inputs |
| 6, 8   | 1A to 2A        | Receiver Inputs         |
| 4      | GND             | Ground                  |
| 1      | V <sub>CC</sub> | Supply Voltage          |

## LOGIC DIAGRAM AND LOGIC SYMBOL



## TRUTH TABLE

| DIFFERENTIAL INPUTS                     | OUTPUT |
|---|--------|
| A, B                                    | Y      |
| $V_{ID} \geq 100\text{mV}$              | H      |
| $-100\text{mV} < V_{ID} < 100\text{mV}$ | ?      |
| $V_{ID} \leq -100\text{mV}$             | L      |
| OPEN                                    | H      |

L = Low level, H = High Level, X = Don't care, Z = High Impedance, ? = Indeterminate

## ABSOLUTE MAXIMUM RATINGS

| Symbol    | Parameter                     | Value                      | Unit |
|-----------|-------------------------------|----------------------------|------|
| $V_{CC}$  | Supply Voltage (Note 1)       | -0.5 to 4.6                | V    |
| $V_I$     | Input Voltage                 | -0.5 to ( $V_{CC} + 0.5$ ) | V    |
| $V_I$     | Input Voltage (A or B inputs) | -0.5 to 4.6                | V    |
| ESD       | Human Body Model              | Pins Receivers             | 7    |
|           |                               | All Pins vs GND            | 3    |
| $T_{stg}$ | Storage Temperature Range     | -65 to +150                | °C   |

Absolute Maximum Ratings are those values beyond which damage to the device may occur. Functional operation under these condition is not implied.

Note 1: All voltages except differential I/O bus voltage, are with respect to the network ground terminal.

## RECOMMENDED OPERATING CONDITIONS

| Symbol     | Parameter                               | Min.          | Typ. | Max.                | Unit |
|------------|---|---------------|------|---------------------|------|
| $V_{CC}$   | Supply Voltage                          | 3.0           | 3.3  | 3.6                 | V    |
| $V_{IH}$   | HIGH Level Input Voltage (ENABLE)       | 2.0           |      |                     | V    |
| $V_{IL}$   | LOW Level Input Voltage (ENABLE)        |               |      | 0.8                 | V    |
| $ V_{ID} $ | Magnitude of Differential Input Voltage | 0.1           |      | 0.6                 | V    |
| $V_{IC}$   | Common Mode Input Voltage               | $0.5 V_{ID} $ |      | $2.4 - 0.5 V_{ID} $ | V    |
|            |   |               |      | $V_{CC} - 0.8$      |      |
| $T_A$      | Operating Temperature Range             | -40           |      | 85                  | °C   |

**ELECTRICAL CHARACTERISTICS** (Over recommended operating conditions unless otherwise noted. All typical values are at  $T_A = 25^\circ\text{C}$ , and  $V_{CC} = 3.3\text{V}$ )

| Symbol       | Parameter   | Test Conditions                  | Min. | Typ. | Max.     | Unit          |
|--------------|---|----------------------------------|------|------|----------|---------------|
| $V_{ITH+}$   | Positive Going Differential Input Voltage Threshold   |                                  |      |      | 100      | mV            |
| $V_{ITH-}$   | Negative Going Differential Input Voltage Threshold   |                                  | -100 |      |          | mV            |
| $V_{OH}$     | High Level Output Voltage                             | $I_{OH} = -8\text{mA}$           | 2.4  |      |          | V             |
|              |   | $I_{OH} = -4\text{mA}$           | 2.8  |      |          |               |
| $V_{OL}$     | Low Level Output Voltage                              | $I_{OH} = 8\text{mA}$            |      |      | 0.4      | V             |
| $I_{CC}$     | Supply Current  | No Load                          |      | 4    | 10       | mA            |
| $I_I$        | Input Current (A or B inputs)                         | $V_I = 0\text{V}$                | -2   | -10  | -20      | $\mu\text{A}$ |
|              |   | $V_I = 2.4\text{V}$              | -1.2 | -3   |          |               |
| $I_{I(OFF)}$ | Power off Input Current (A or B inputs)               | $V_{CC} = 0$ $V_I = 3.6\text{V}$ |      | 10   | 20       | $\mu\text{A}$ |
| $I_{IH}$     | High Level Input Current (EN, G, $\bar{G}$ or Inputs) | $V_{IH} = 2\text{V}$             |      |      | 10       | $\mu\text{A}$ |
| $I_{IL}$     | Low Level Input Current (EN, G, $\bar{G}$ or Inputs)  | $V_{IL} = 0.8\text{V}$           |      |      | 10       | $\mu\text{A}$ |
| $I_{OZ}$     | High Impedance Output Current                         | $V_O = 0$ or $V_{CC}$            |      |      | $\pm 10$ | $\mu\text{A}$ |

**SWITCHING CHARACTERISTICS** (Unless otherwise noted. Typical values are referred to  $T_A = 25^\circ\text{C}$  and  $V_{CC} = 3.3\text{V}$ )

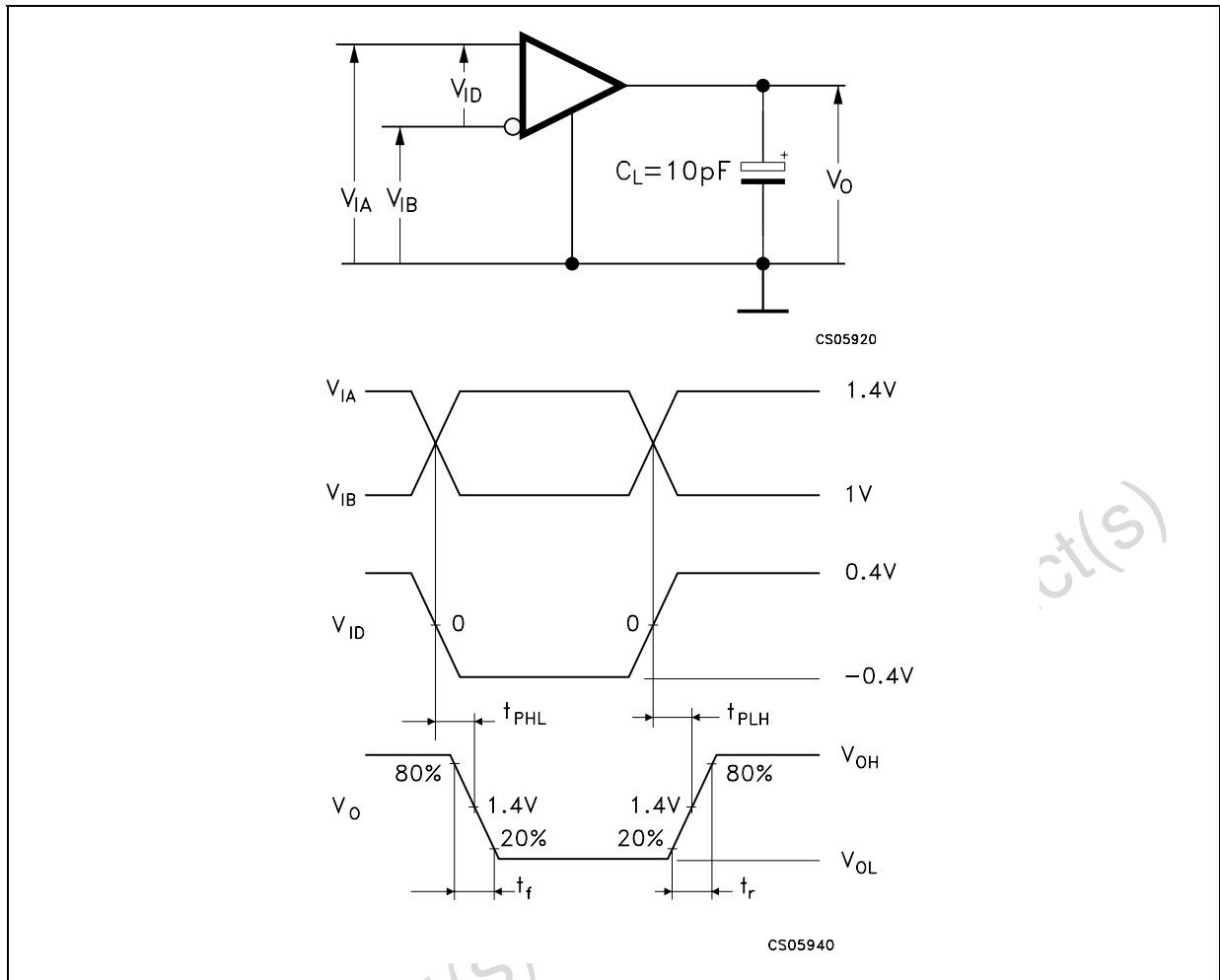
| Symbol       | Parameter   | Test Conditions            | Min. | Typ. | Max. | Unit |
|--------------|---|----------------------------|------|------|------|------|
| $t_{PLH}$    | Propagation Delay Time, Low to High Output                  | $C_L = 10\text{pF}$ Fig. 1 | 1.5  | 2.5  | 3.3  | ns   |
| $t_{PHL}$    | Propagation Delay Time, High to Low Output                  |                            | 1.5  | 2.5  | 3.3  | ns   |
| $t_r$        | Differential Output Signal Rise Time                        |                            |      | 0.4  |      | ns   |
| $t_f$        | Differential Output Signal Fall Time                        |                            |      | 0.4  |      | ns   |
| $t_{sk(O)}$  | Channel to Channel Output Skew (note1)                      |                            |      | 0.1  | 0.3  | ns   |
| $t_{sk(P)}$  | Pulse Skew ( $ t_{PHL} - t_{PLH} $ ) (note2)                |                            |      | 0.2  | 0.4  | ns   |
| $t_{sk(PP)}$ | Part to Part Skew (note3)                                   |                            |      |      | 1    | ns   |
| $t_{PZH}$    | Propagation Delay Time, High Impedance to High Level Output | Fig. 2                     |      | 3    | 12   | ns   |
| $t_{PZL}$    | Propagation Delay Time, High Impedance to Low Level Output  |                            |      | 5    | 12   | ns   |
| $t_{PHZ}$    | Propagation Delay Time, High Level to High Impedance Output |                            |      | 5    | 12   | ns   |
| $t_{PLZ}$    | Propagation Delay Time, Low Level to High Impedance Output  |                            |      | 5    | 12   | ns   |

Note 1:  $t_{sk(O)}$  is the maximum delay time difference between the propagation delay of one channel and that of the others on the same chip with any event on the inputs.

Note 2:  $t_{sk(P)}$  is the magnitude difference in differential propagation delay time between the positive going edge and the negative going edge of the same channel.

Note 3:  $t_{sk(PP)}$  is the differential channel-to-channel skew of any event between devices. This specification applies to devices at the same  $V_{CC}$ , and within  $5^\circ\text{C}$  of each other within the operating temperature range.

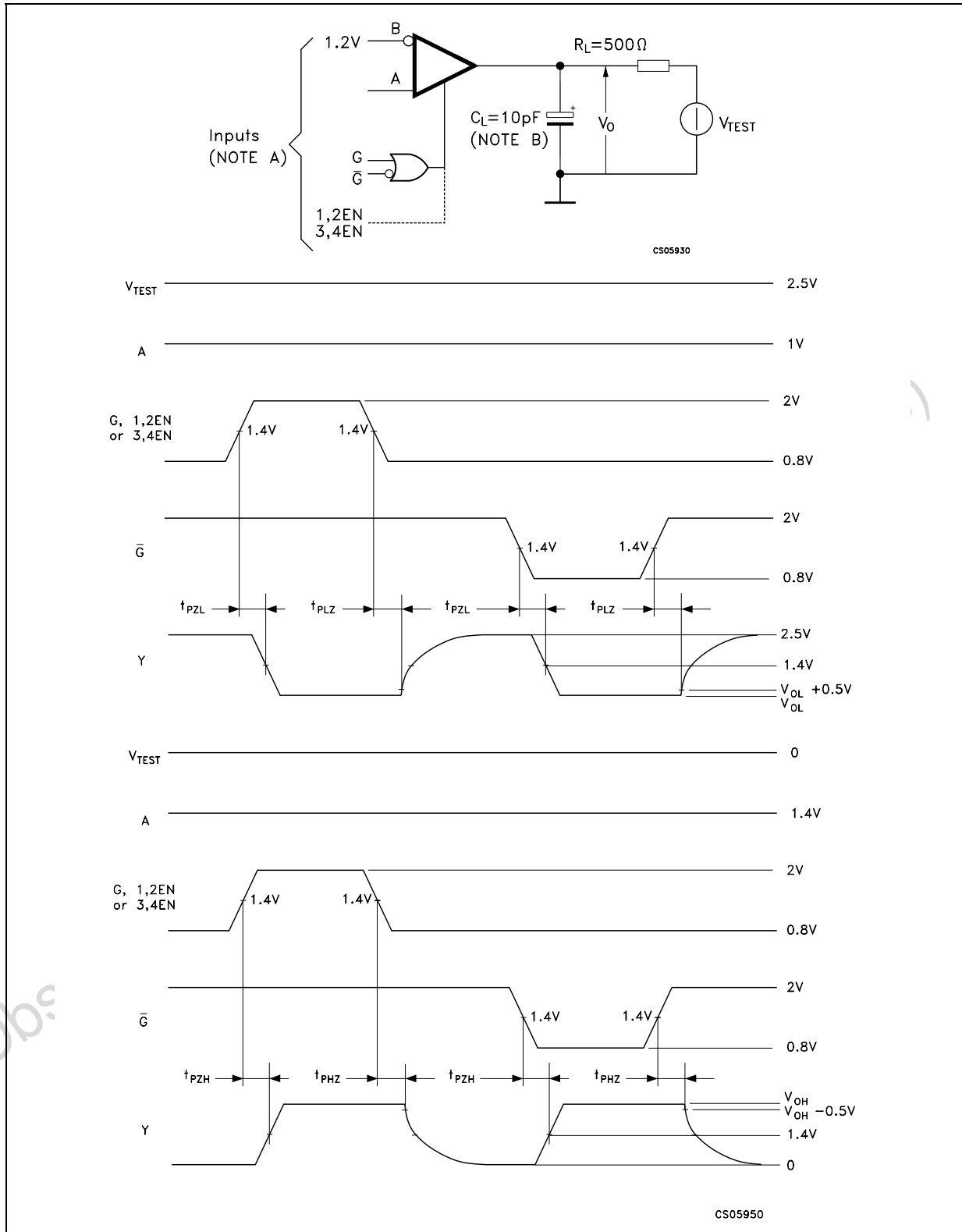
Figure 1 : Timing Test Circuit, Timing And Waveforms



Note A: All input pulse are supplied by a generator having the following characteristics:  $t_r$  or  $t_f \leq 1\text{ns}$ , pulse repetition rate (PRR) = 50Mpps, pulse width =  $10 \pm 0.2\text{ns}$ .

Note B:  $C_L$  includes instrumentation and fixture capacitance within 6mm of the D.U.T.

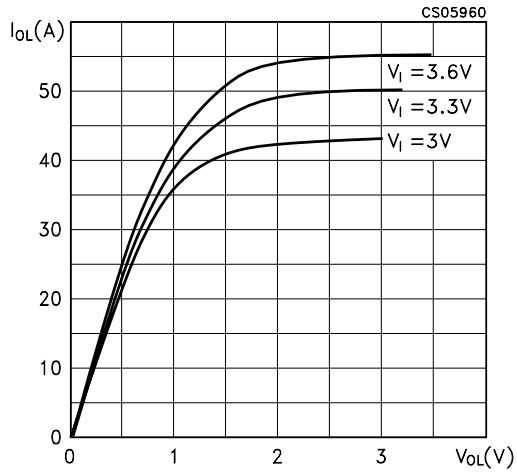
Figure 2 : Enable And Disable Time Test Circuit And Waveform



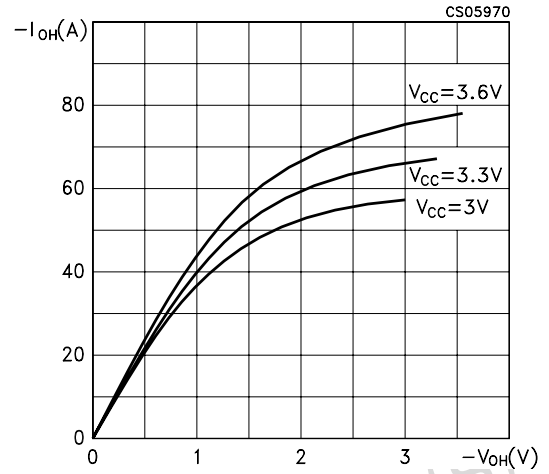
Note A: All input pulse are supplied by a generator having the following characteristics:  $t_r$  or  $t_f \leq 1\text{ns}$ , pulse repetition rate (PRR) = 50Mpps, pulse width =  $500 \pm 10\text{ns}$ .  
 Note B:  $C_L$  includes instrumentation and fixture capacitance within 6mm of the D.U.T.

**TYPICAL PERFORMANCE CHARACTERISTICS** (unless otherwise specified  $T_j = 25^\circ\text{C}$ )

**Figure 3** : Output Current vs Output Voltage



**Figure 4** : Output Current vs Output Voltage

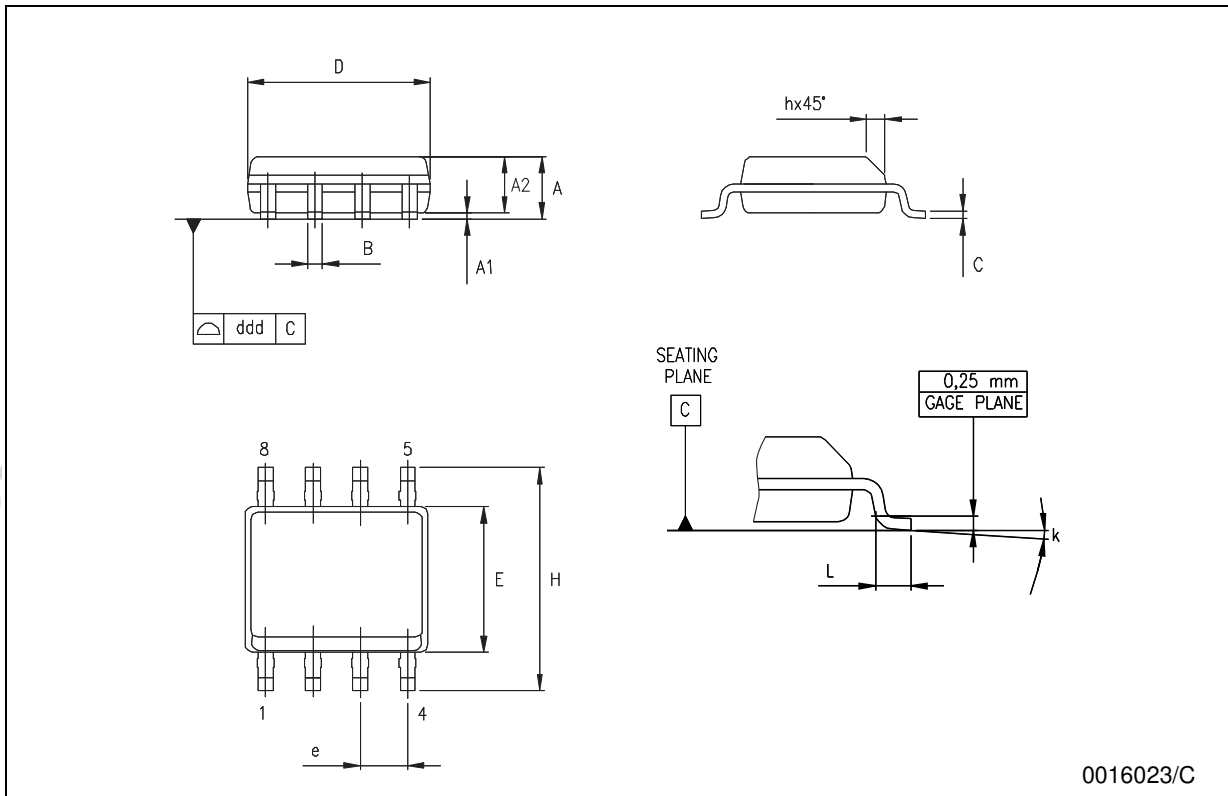


Obsolete Product(s) - Obsolete Product(s)



**SO-8 MECHANICAL DATA**

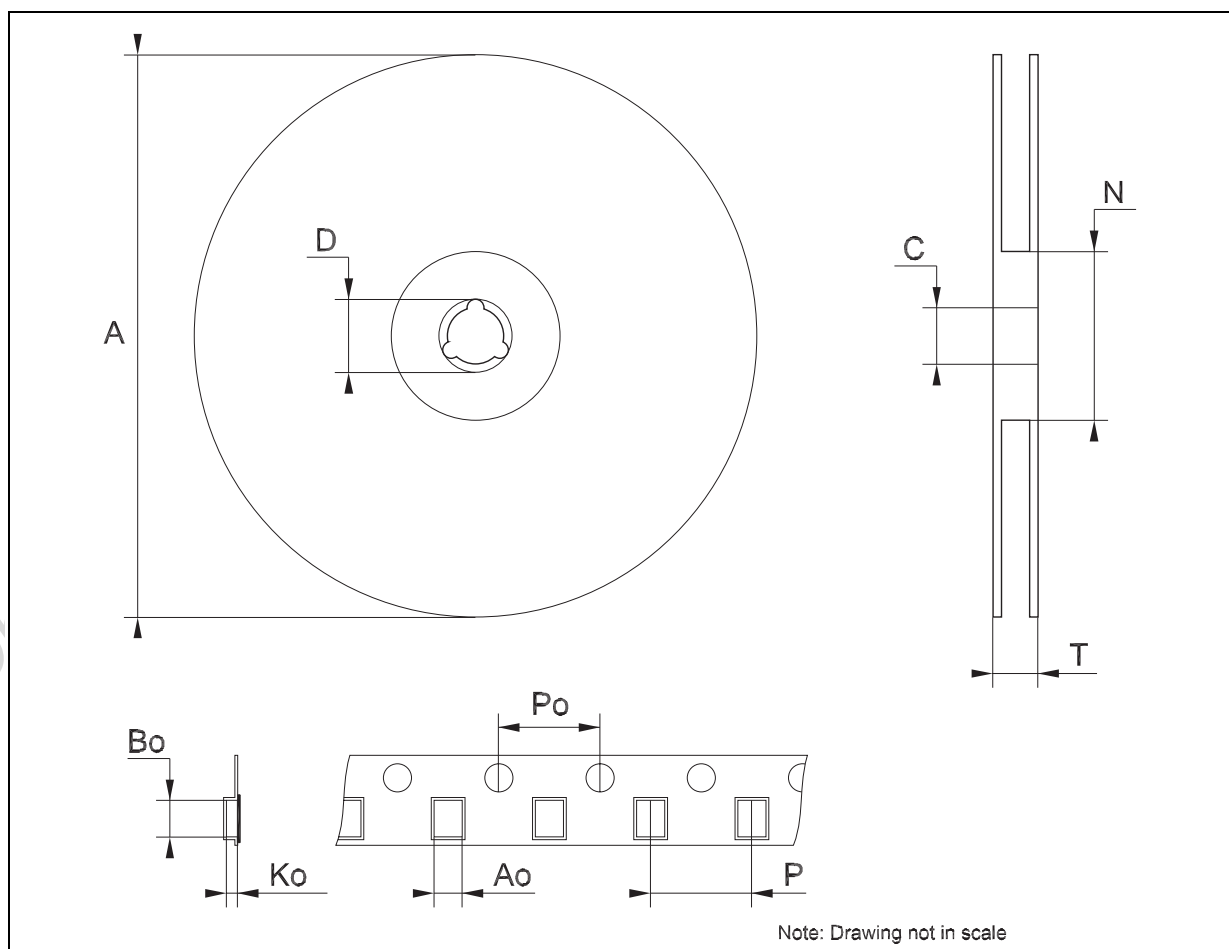
| DIM. | mm.       |      |      | inch  |       |       |
|------|-----------|------|------|-------|-------|-------|
|      | MIN.      | TYP. | MAX. | MIN.  | TYP.  | MAX.  |
| A    | 1.35      |      | 1.75 | 0.053 |       | 0.069 |
| A1   | 0.10      |      | 0.25 | 0.04  |       | 0.010 |
| A2   | 1.10      |      | 1.65 | 0.043 |       | 0.065 |
| B    | 0.33      |      | 0.51 | 0.013 |       | 0.020 |
| C    | 0.19      |      | 0.25 | 0.007 |       | 0.010 |
| D    | 4.80      |      | 5.00 | 0.189 |       | 0.197 |
| E    | 3.80      |      | 4.00 | 0.150 |       | 0.157 |
| e    |           | 1.27 |      |       | 0.050 |       |
| H    | 5.80      |      | 6.20 | 0.228 |       | 0.244 |
| h    | 0.25      |      | 0.50 | 0.010 |       | 0.020 |
| L    | 0.40      |      | 1.27 | 0.016 |       | 0.050 |
| k    | 8° (max.) |      |      |       |       |       |
| ddd  |           |      | 0.1  |       |       | 0.04  |



0016023/C

## Tape &amp; Reel SO-8 MECHANICAL DATA

| DIM. | mm.  |     |      | inch  |      |        |
|------|------|-----|------|-------|------|--------|
|      | MIN. | TYP | MAX. | MIN.  | TYP. | MAX.   |
| A    |      |     | 330  |       |      | 12.992 |
| C    | 12.8 |     | 13.2 | 0.504 |      | 0.519  |
| D    | 20.2 |     |      | 0.795 |      |        |
| N    | 60   |     |      | 2.362 |      |        |
| T    |      |     | 22.4 |       |      | 0.882  |
| Ao   | 8.1  |     | 8.5  | 0.319 |      | 0.335  |
| Bo   | 5.5  |     | 5.9  | 0.216 |      | 0.232  |
| Ko   | 2.1  |     | 2.3  | 0.082 |      | 0.090  |
| Po   | 3.9  |     | 4.1  | 0.153 |      | 0.161  |
| P    | 7.9  |     | 8.1  | 0.311 |      | 0.319  |



Information furnished is believed to be accurate and reliable. However, STMicroelectronics assumes no responsibility for the consequences of use of such information nor for any infringement of patents or other rights of third parties which may result from its use. No license is granted by implication or otherwise under any patent or patent rights of STMicroelectronics. Specifications mentioned in this publication are subject to change without notice. This publication supersedes and replaces all information previously supplied. STMicroelectronics products are not authorized for use as critical components in life support devices or systems without express written approval of STMicroelectronics.

The ST logo is a registered trademark of STMicroelectronics  
All other names are the property of their respective owners

© 2003 STMicroelectronics - All Rights Reserved  
STMicroelectronics GROUP OF COMPANIES

Australia - Belgium - Brazil - Canada - China - Czech Republic - Finland - France - Germany - Hong Kong - India - Israel - Italy - Japan -  
Malaysia - Malta - Morocco - Singapore - Spain - Sweden - Switzerland - United Kingdom - United States.

<http://www.st.com>