



Chipsmall Limited consists of a professional team with an average of over 10 year of expertise in the distribution of electronic components. Based in Hongkong, we have already established firm and mutual-benefit business relationships with customers from,Europe,America and south Asia,supplying obsolete and hard-to-find components to meet their specific needs.

With the principle of "Quality Parts,Customers Priority,Honest Operation,and Considerate Service",our business mainly focus on the distribution of electronic components. Line cards we deal with include Microchip,ALPS,ROHM,Xilinx,Pulse,ON,Everlight and Freescale. Main products comprise IC,Modules,Potentiometer,IC Socket,Relay,Connector.Our parts cover such applications as commercial,industrial, and automotives areas.

We are looking forward to setting up business relationship with you and hope to provide you with the best service and solution. Let us make a better world for our industry!



Contact us

Tel: +86-755-8981 8866 Fax: +86-755-8427 6832

Email & Skype: info@chipsmall.com Web: www.chipsmall.com

Address: A1208, Overseas Decoration Building, #122 Zhenhua RD., Futian, Shenzhen, China



User's Guide

XELTEK
SuperPro[®] 6104GP

**Ultra-Fast, Built-in 144 pins
Universal Gang Programmer**

IMPORTANT!

1. This manual applies to SuperPro 6104GP
2. Make sure to complete the software installation before connecting the programmer USB cable.
3. Please read the manual carefully before using programmers.
4. Please use XELTEK's adapter, self-made adapters could lead to connecting error,

SUPERPRO is the registered trademark of XELTEK.

Distribution and sales of this product are intended for use by the original purchaser under the terms of the License Agreement.

This document may not, in whole or part, be copied, photocopied, reproduced, translated or reduced to any electronic medium of machine-readable form without prior consent in writing from XELTEK.

The information in this document is subject to change without notice.

Software Copyright **2012-2022 XELTEK**

User's Guide Copyright **2012-2022 XELTEK**

Table of Contents

Feature Highlights.....	6
Manual Organization.....	7
Introduction to SUPERPRO 6104GP	8
Package Contents.....	8
Programming Hardware.....	9
Software Features	10
System Requirements.....	10
Software Setup	11
CD-ROM	11
Xeltek Website	12
Setup Process.....	12
Hardware and Driver Installation.....	19
Main Screen	22
Toolbar.....	23
Connect/DisConnect.....	23
Setting.....	23
Auto	24
Stop.....	24
Quit.....	24
Setting Screen (Administrator)	24
Select Device.....	26
Device Information Screen.....	28
Chip Insertion – DIP Encapsulation	29
Chip Insertion – None-DIP Encapsulation.....	29

Load File Screen	30
Save File Screen.....	34
Buffer Edit Screen.....	34
HEX/ASCII Data Buffer	36
Fuse Buffer	38
Encryption table.....	39
Test Vector Table	39
Operation Option Screen	40
General	41
Buffer	42
Auto Increment.....	43
Edit Auto Screen.....	45
Device Configuration Word Screen.....	48
U.E.S Screen.....	50
Setting Screen (Producer).....	51
Log File Screen.....	52
Burning Status Window	52
Output Window.....	54
Statistical Window	55
Programming Procedure	57
Prepare the Hardware.....	57
Prepare the Settings	57
Start Producer Mode	58
Program the Chips	58
Security and Password Input.....	60
Making a Chip Blank.....	60
Identifying the Sector	61
Reading A Master Chip	62
Dealing with Data Files.....	63

Solve Invalid File Type or File Data Overflow Error	63
Separate File Data for Programming.....	63
Program Two or More Files to One Chip	64
POF Format Files.....	65
Adapter Selection	65
Selecting the Correct Adapter.....	66
Other Messages	67
Insertion Test Errors	68
Device ID Check Error	69
Troubleshooting.....	70
Contact Information.....	70

Feature Highlights

- The SUPERPRO includes ultra-high speed programming via 32bit RISC MCU device. This is especially suitable for programming high capacity NAND Flash devices
- A 144 pin-driver support is built-in to provide efficient programming of large pin count devices, an additional pin expander module is not necessary to program large pin-count devices.
- The SUPERPRO operates with a PC for engineering purpose or in stand-alone mode, without a PC, for repeat production mode programming. This provides seamless migration from engineering to production.
- The SUPERPRO communicates through a USB 2.0 port and operates on most Pentium-based, IBM compatible desktop/notebook computers.
- The SUPERPRO comes with a standard 48-pin DIP ZIF socket and supports optional socket adapters to accommodate PLCC, TSOP, SOIC, SOP, QFP, TSSOP and BGA package types.
- The programmer and software supports Windows XP and Windows Vista.
- The programmer is scheduled to support 43,000+ IC devices by the end of 2008. Please check www.xeltek.com for the list of the currently supported devices.
- For authorized users, the SUPERPRO can provide for automatic generation of electronic serial numbers.

Manual Organization

This manual includes the following:

- An introduction to the SUPERPRO series, including the system requirements and the software and hardware installation
- Detailed explanations on the commands and the programming procedures
- Information about error messages and common problems
- An Appendix that includes the customer support information

Note: The software prevails in any discrepancy between it and the user manual, due to any upgrades of the software.

The information in this document is subject to change without notice.

Chapter 1 General Description

This chapter provides information on the package contents, software features, and system requirements for SUPERPRO.

Introduction to SUPERPRO 6104GP

The SUPERPRO is a cost-effective, reliable, and high-speed universal programmer for mass-production. They are designed to communicate with a USB 2.0 port of PC by a standard USB cable. Online software provides friendly interface, powerful functions and flexibility.

It is the 8th generation high-speed programmers of XELTEK.

Package Contents

The standard package contains the following items:

- A programmer module
- A USB connection cable
- A power supply unit
- A software installation CD
- The User's Guide
- A registration form

Programming Hardware

SP6104GP is a mass-product programmer that can burn into four chips at the same time. It contains four burning modules, as illustrated below. The module marked “1” is the main module.



The programming hardware includes the following items:

- 4 complete independent modules
- High programming speed
- 144 pin universal pin-drivers design

Note: Universal adapters, support devices with 144 pins or less, for support of E/EPROM, FLASH, SCM, PLD, SRAM with normal or low voltage.

- Chip insertion test
- Asynchronous mode (Production mode)–operation starts as soon as the chip is inserted in the socket

Software Features

The USB 2.0 Series supports:

- Windows XP and Windows Vista, Win 7 / 8
- Over 25,000 (40,000+ by end of 2008) types of devices, including PROMs, E/EPROMs, PLDs and MCU from more than 150 manufacturers
- Many types of formats such as Binary, Intel (linear & segmented) Hex, Motorola S, Tektronix (linear & segmented), JEDEC, POF, etc.
- Device insertion test (144 pins or less)
- Integrated full screen buffer editing environment with commands such as fill, copy, move, swap, etc.
- Project management
- Batch-processing command

System Requirements

The minimum system configuration is as follows:

- A desktop or laptop computer, IBM-PC 586 or compatible
- Windows XP or Windows Vista operating system
- A hard disk with at least 2 GB free space
- At least one standard USB port (USB 2.0)
- One CD-ROM drive

Chapter 2 System Installation

This chapter provides information on how to install the software and connect the programmer hardware properly.

To avoid complications during the installation process, you must install the software before connecting the programming hardware to your computer. Installing the software sets up the INF files and drivers automatically instead of going through the Windows New Hardware Wizard. This might install the wrong drivers with a compatible ID.

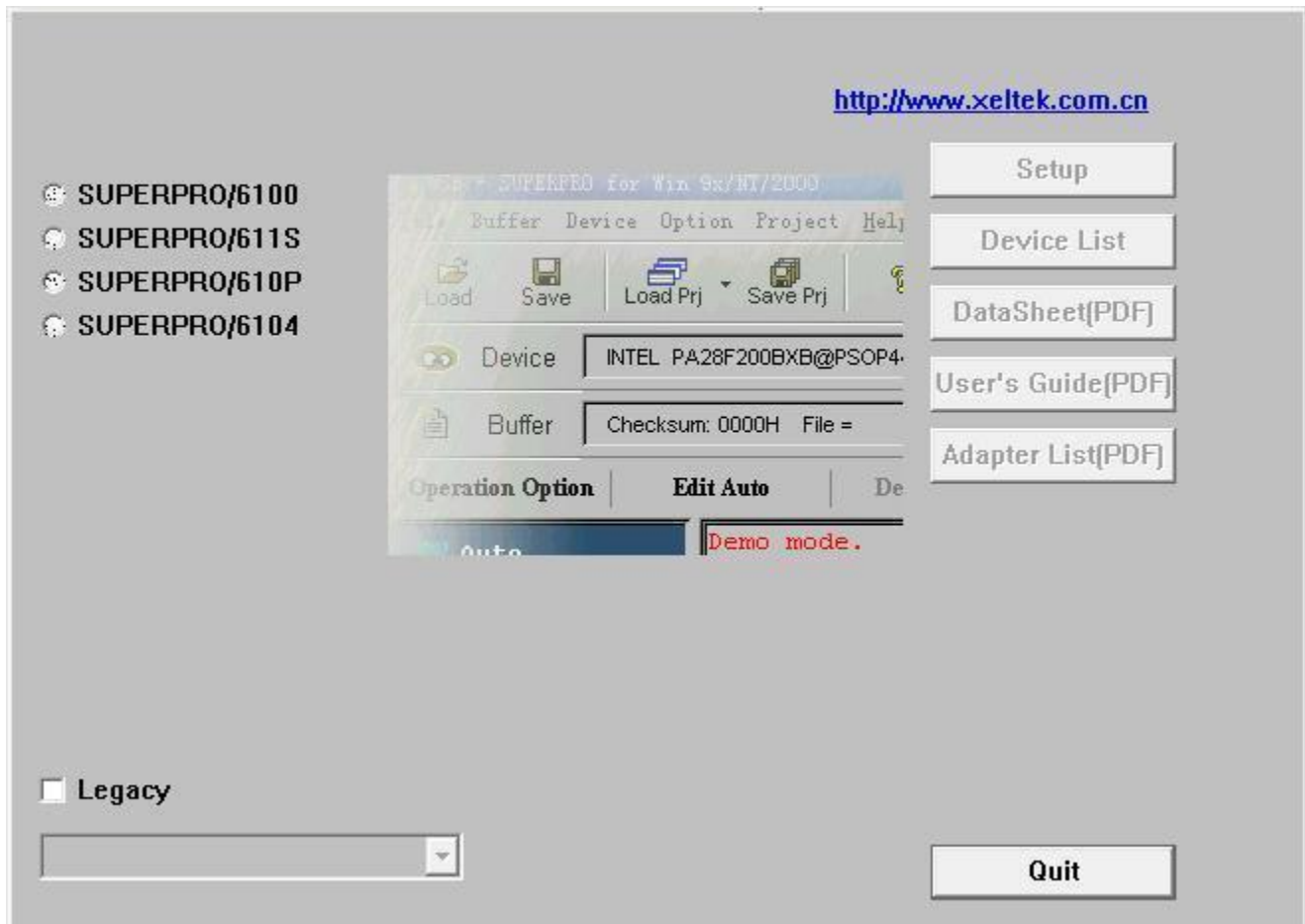
Software Setup

Select the software to setup your SUPERPRO programmer either from the CD-ROM or by downloading the program from the Xeltek website. Instructions for both methods are described below.

CD-ROM

1. Insert the CD into the CD-ROM drive.
2. If the setup program does not start automatically, run SETUP. EXE located in the root directory.

The system displays a dialog box to select the programmer model, illustrated below.



3. Select the appropriate programmer model. Make sure to select the model you purchased, since each model has its own software.
4. Select **Setup** to install the application software for the programmer.

Xeltek Website

You can download the specific software for a certain model at Xeltek website: <http://www.xeltek.com.cn>. Select the icon to download the appropriate file for your programmer. Once you have saved the file to your computer, run it to setup the software.

Setup Process

The following procedure explains the setup process.

1. The system displays the **Select Language** dialog box, illustrated below.



Select your preferred language for the setup process from the drop down list.

2. Select **OK**.

The system displays the **Install Wizard** dialog box, illustrated below.

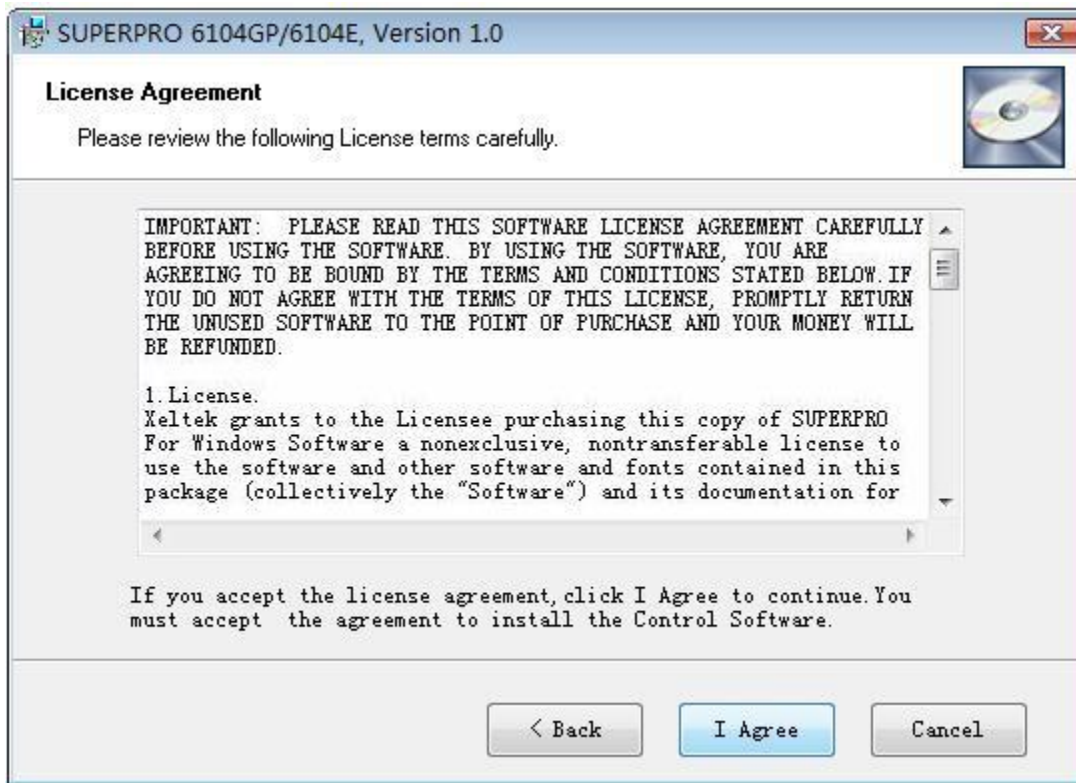


Next, the system displays the following dialog box.



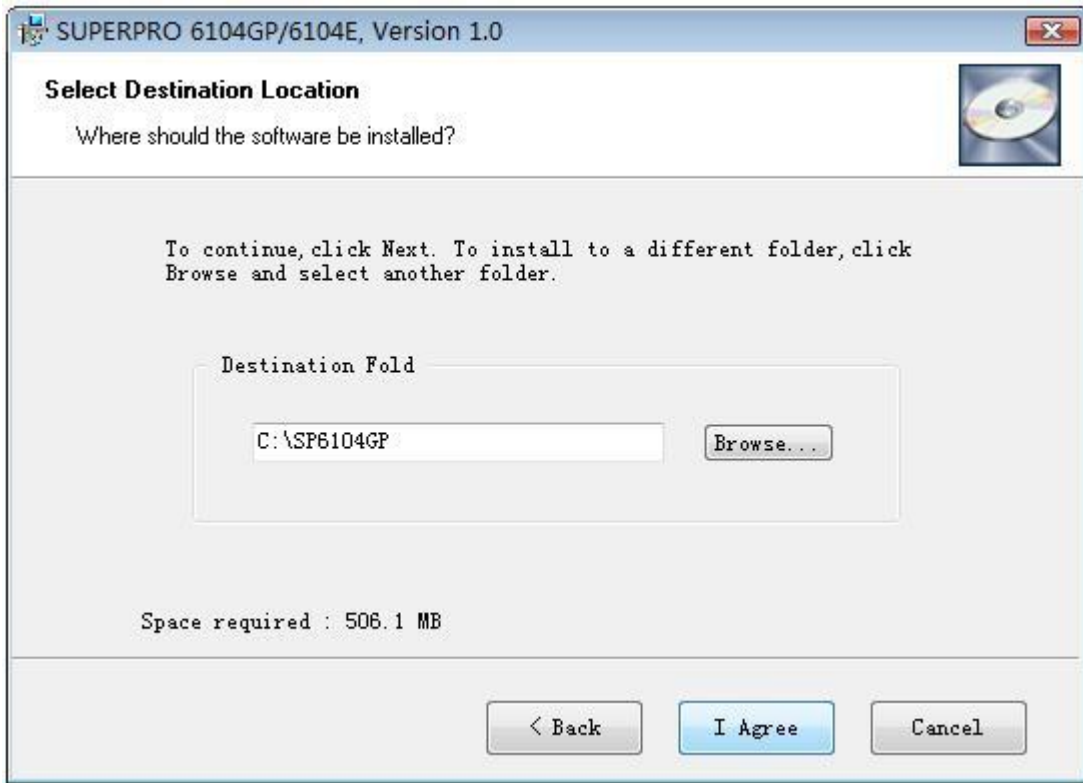
3. Select **Next** to proceed to the next step.

The system displays the License Agreement, illustrated below.



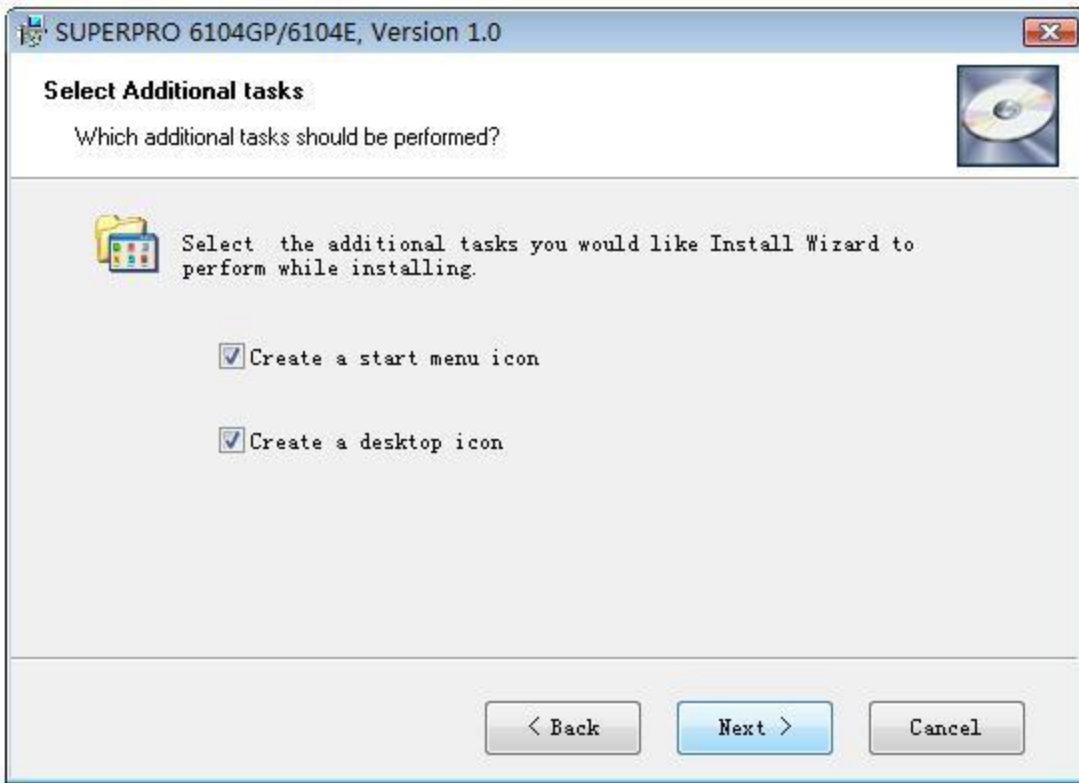
4. Please read the license agreement carefully. Select **I Agree** to continue the installation. To cancel the installation and exit the installation process, select **Cancel**.

The system asks for the **Destination Location**, illustrated below.



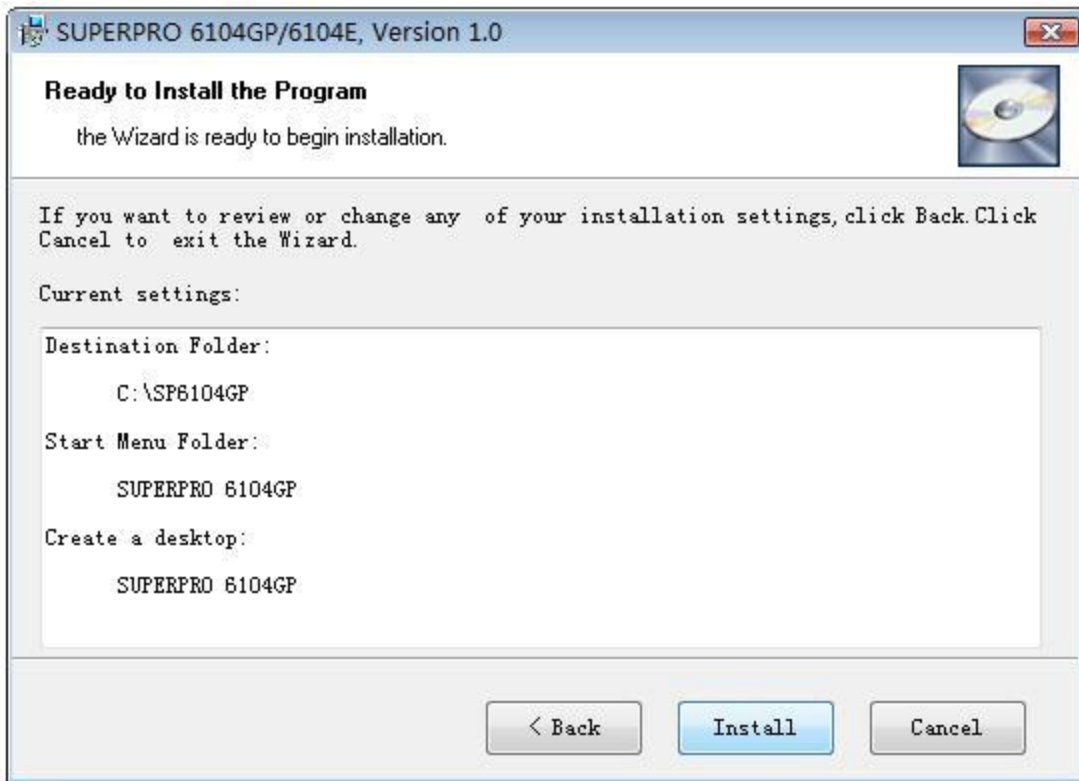
5. Select **Browse** to choose the installation path. After selecting the desired destination folder, select **Next**.

The system displays the **Additional tasks** dialog box, illustrated below.



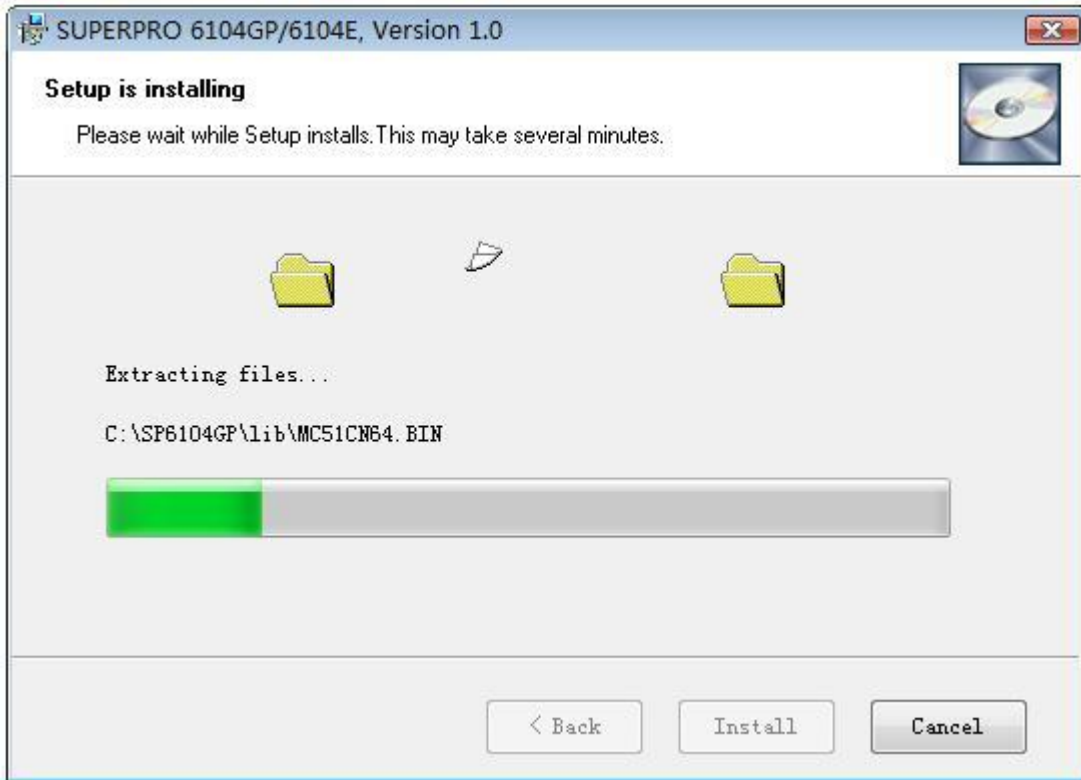
6. Check the **Create a start menu icon** box to add an icon on the Start menu during the installation. Check the **Create a desktop icon** box to add an icon to the desktop during the installation. Select **Next**.

The system displays the following dialog box.



7. Review the settings you selected. Select **Install** to proceed to the next step. Select **Back** to return to a previous step to change your selections.

The system displays the following dialog box.

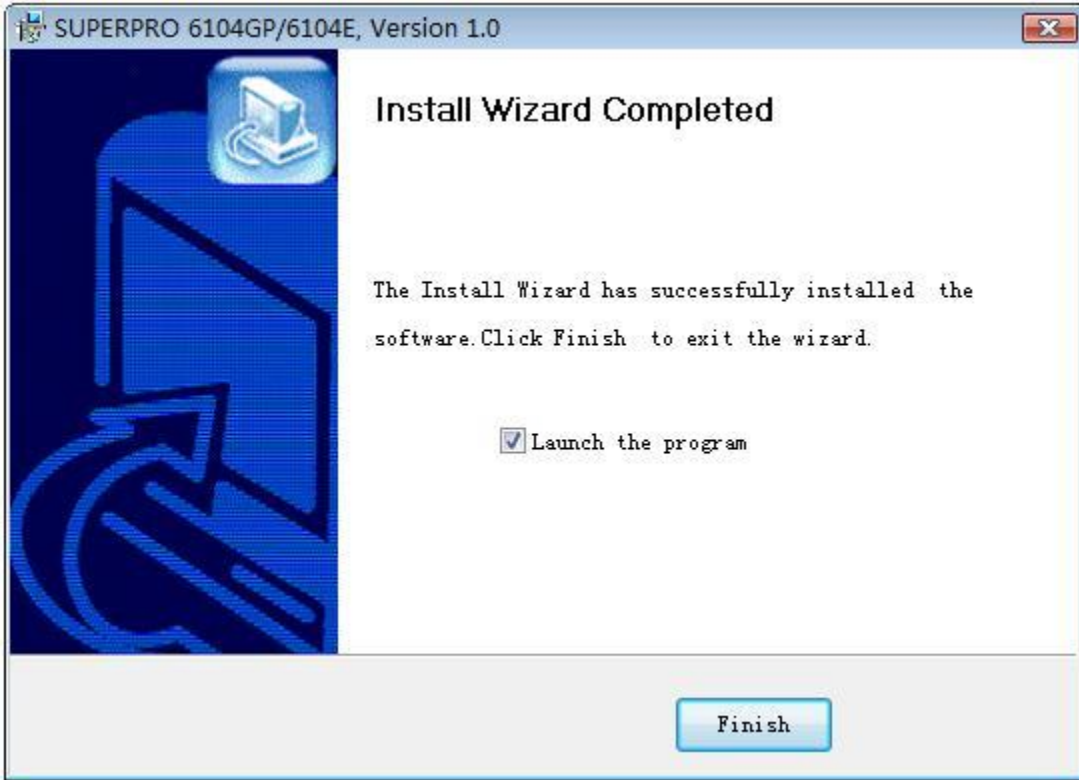


The system copies the files, installs the drivers and registers the software.
If you are using Windows Vista, the system displays following dialog box.



8. Select **Install this driver software anyway**.

The system displays the following dialog box.



9. Select **Finish** to complete the setup process.

Hardware and Driver Installation

If you connect the hardware before installing the software, the system opens the **Found New Hardware Wizard**, illustrated below.



1. Select **Cancel** to make sure the system does not install the wrong driver.
2. Return to the Software Setup process to setup the software before installing the hardware. Refer to page 11 for instructions.

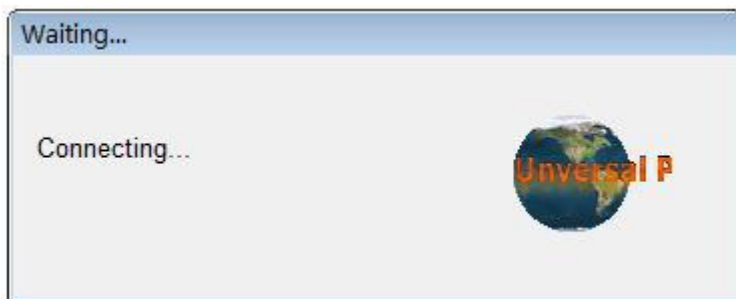
After you set up the software, you can install the hardware and driver. The following procedure explains the installation process.

1. Make sure all other programs are closed during the installation process.
2. Connect the programmer module to the computer through the USB port.
3. Turn on the power switch of the programmer module.

When you connect the new hardware, the system initiates the **New Hardware Wizard**, which locates the driver from the software you have just installed. The system displays alerts one at a time, illustrated below. The alerts on your system may be slightly different.



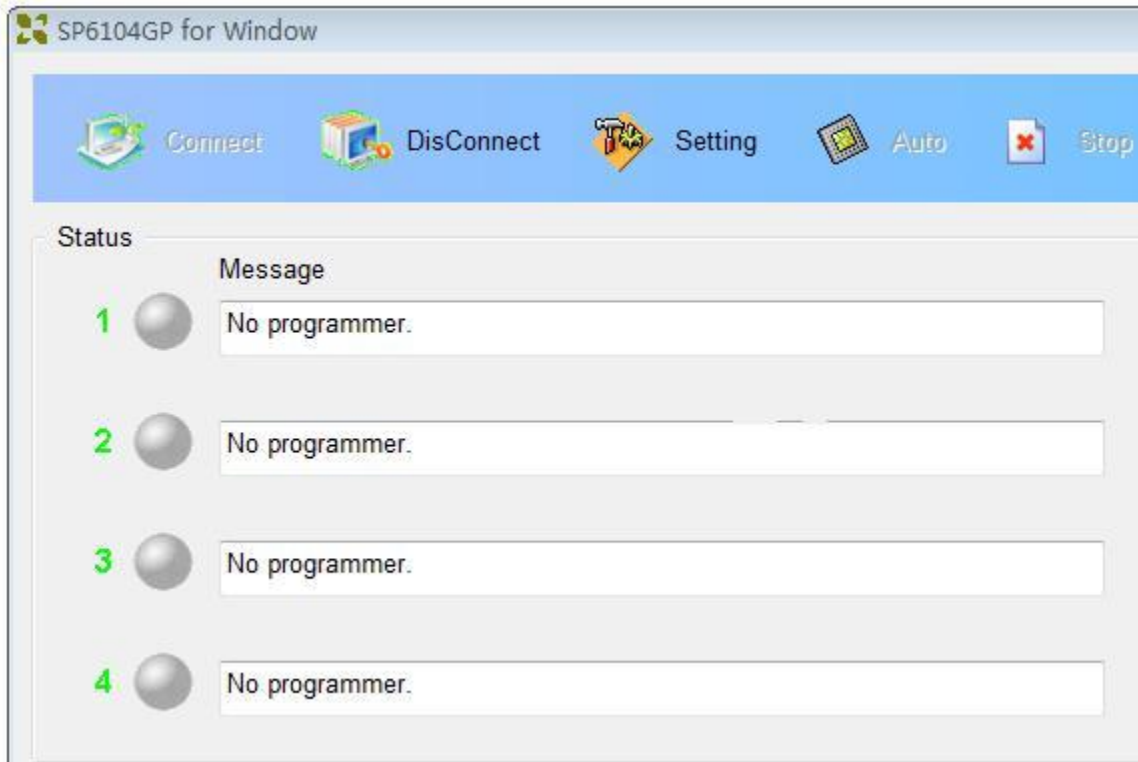
4. After you open the application software for the programmer, the system automatically starts the initialization. This software manages four independent modules, so it may take some time to communicate. The system displays a Waiting window, illustrated below.



Stop any operations while this message displays and the system is communicating with

the programmer.

If the system does not automatically initialize, it may show a display similar to that illustrated below.



5. Make sure the programmer is securely connected to the computer and that the power switch is on.

Note: The four modules are independent of each other. Under urgent circumstances, if two or more modules are working, you can still use SP6104GP.

Chapter 3 SUPERPRO 6104GP Software Features

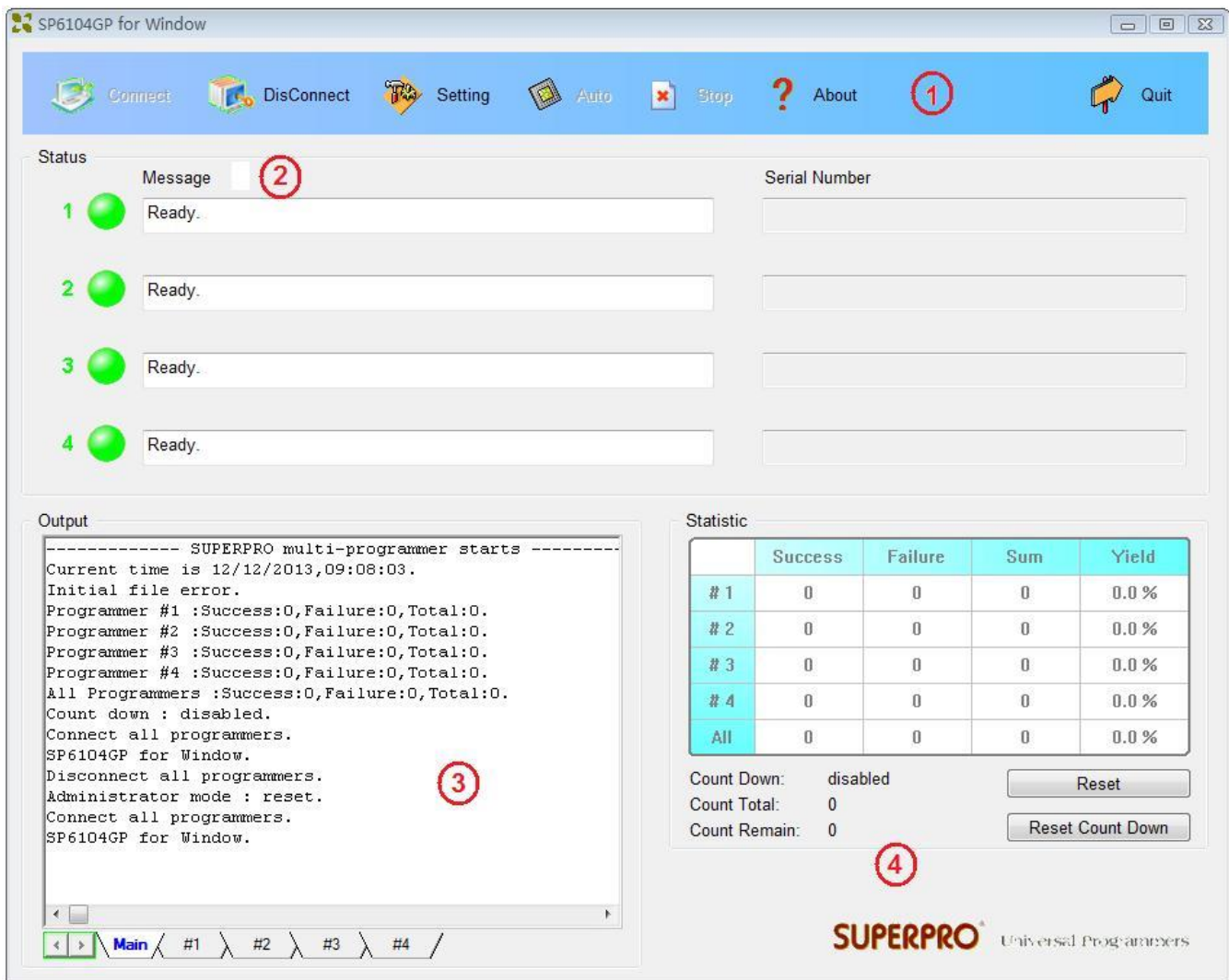
This chapter gives detailed explanations of the software functions of the programmer.

Important: Set your monitor display resolution ratio to 1023*768 or above. The main screen cannot be resized.

Main Screen

SP6104GP focuses on information needed for mass production. It includes a more secure setting to ensure consistency in the burning process.

The main SuperPro 6104GP screen is illustrated below. Each part of the user interface is labeled with a number and described below.



1. The Toolbar includes icons to access common functions. Refer to the Toolbar section on page 23 for more information.
2. The Burning Status window displays the burning process and instructs operators to insert or take out chips. Refer to the Burning Status Window section on page 52 for more

information.

3. The Output window displays the running information of the program. Refer to the Output Window section on page 54 for more information.
4. The Statistic window displays the number of times of successful programming and the number of times of failed programming. Refer to the Statistical Window section on page 55 for more information.

Toolbar

The toolbar is illustrated below. Each tool is explained in the following sections.



Connect / Disconnect

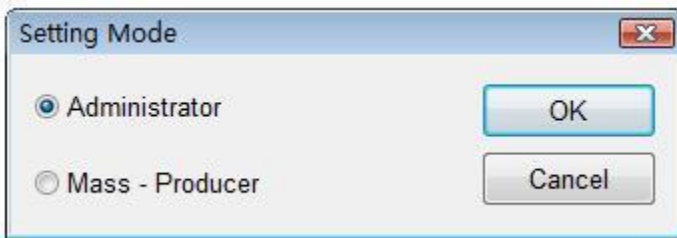
The programmer software uses Microsoft Winsock protocol to manage four independent modules. The main screen is a management interface that controls the hardware of the programmer by sending commands to the SP6100 software. After the main interface, the process of communicating with the SP6100 software starts automatically.

If the system does not find the programmer or something is wrong with a module, select **Disconnect** to cancel the connection. Then check the connection between the hardware and computer. Select **Connect** to reconnect.

Setting

The SuperPro 6104GP has an Administrator mode and Producer mode to separate management from production.

Select the **Setting** tool to choose whether to enter Administrator mode or Producer mode. The system displays the Setting Mode screen, illustrated below.



Select either Administrator or Mass-Producer to indicate the mode for which indicate the settings. Refer to the Setting Screen (Administrator) section on page 24 or the Setting Screen (Producer) section on page 51 for more information.

Auto

After making the programming preparations, select **Auto** to start the programmer.

Stop

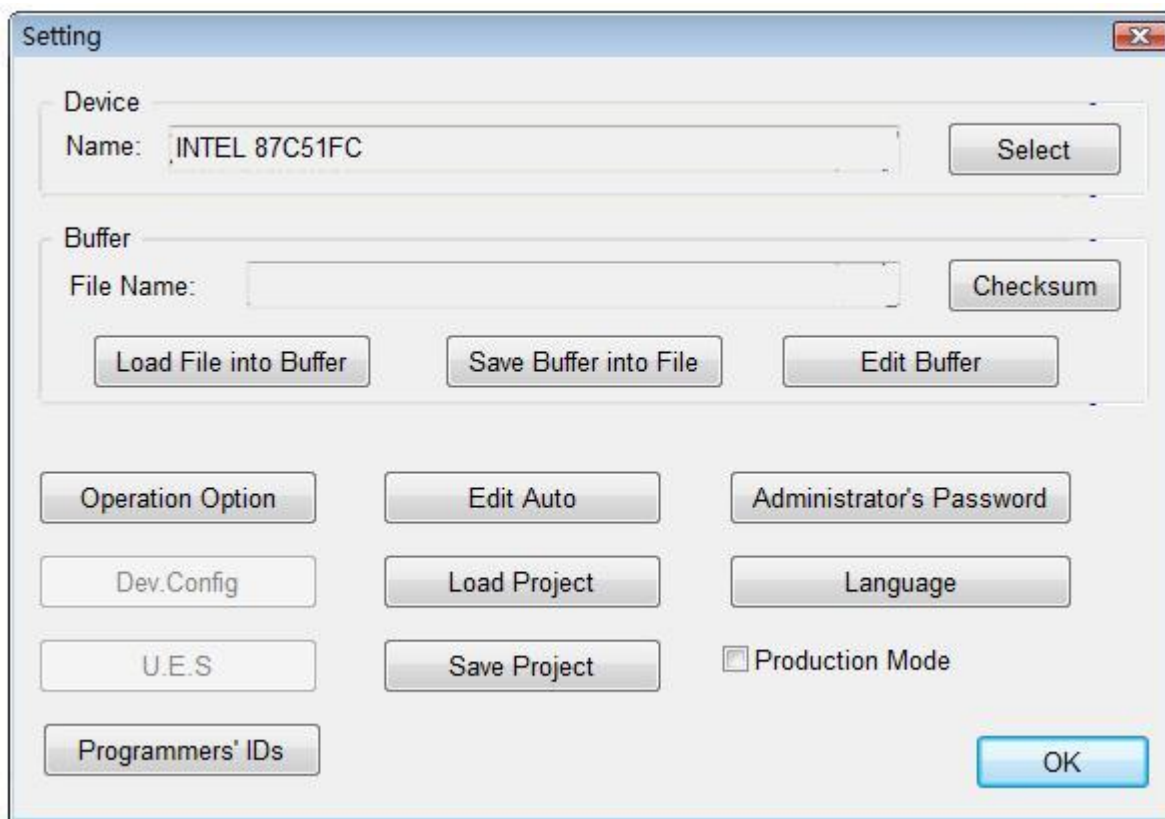
Select **Stop** to cancel the current operation.

Quit

You cannot quit while burning chips. After the operation is complete, or after canceling the current operation, select **Quit** to exit the program. If you have set an administrator's password, you must enter the correct password to quit.

Setting Screen (Administrator)

When you select **Administrator** on the **Setting Mode** screen, the system displays the Setting screen illustrated below. Each part of the screen is described below.



The system displays the name of the selected Device. Choose Select to open the screen to select a device. Refer to the

1. Select section on page 26 for more information.
2. The system displays the name of the loaded file in the File Name field. Select **Load File into Buffer** to open the Load File screen to load a file. Refer to the Load File Screen section on

After editing the buffer information, select Save Buffer into File to save data in the current buffer to a disk file. The system displays the Save File screen. Refer to the

3. Save File Screen section on page 34 for more information.
4. Select **Edit Buffer** to open the Buffer Edit screen. Refer to the Buffer Edit Screen section on page 34 for more information.
5. Select **Checksum** to open the Checksum for Compatibility screen.
6. Select **Operation Option** to open the Operation Option screen. Refer to the Operation Option Screen section on page 40 for more information.
7. Select **Edit Auto** to open the Edit Auto screen. Refer to the Edit Auto Screen section on page 45 for more information.
8. Select **Dev. Config** to open the ConfigWord screen. Refer to the Device Configuration Word Screen section on page 48 for more information.
9. Select **U.E.S** to open the User Electronic Signature Bytes screen. Refer to the U.E.S Screen section on page 50 for more information.
10. Check the **Production Mode** box to program devices in large quantities. The programmer uses the Insertion Test to automatically detect insertion and removal of devices and carry out the entire programming process.
11. A project file allows you to save a working environment, including the device information, the operation option settings, and the content of the Auto mode.

Note: If you have upgraded or reinstalled the software, any previously saved project files become incompatible.

Select **Load Project** to select a previously saved project file using the File dialog box.
12. Select **Save Project** to save the current working environment to a specified project file.
13. Select **Administrator's Password** to set a password to prevent others from changing the program settings, including quitting or entering the program.
14. Select **Programmer's ID** to display the ID of the four modules. These IDs are written when leaving the factory.
15. Select **OK** when you have finished indicating the Administrator settings.