



Chipsmall Limited consists of a professional team with an average of over 10 year of expertise in the distribution of electronic components. Based in Hongkong, we have already established firm and mutual-benefit business relationships with customers from,Europe,America and south Asia,supplying obsolete and hard-to-find components to meet their specific needs.

With the principle of “Quality Parts,Customers Priority,Honest Operation,and Considerate Service”,our business mainly focus on the distribution of electronic components. Line cards we deal with include Microchip,ALPS,ROHM,Xilinx,Pulse,ON,Everlight and Freescale. Main products comprise IC,Modules,Potentiometer,IC Socket,Relay,Connector.Our parts cover such applications as commercial,industrial, and automotives areas.

We are looking forward to setting up business relationship with you and hope to provide you with the best service and solution. Let us make a better world for our industry!



Contact us

Tel: +86-755-8981 8866 Fax: +86-755-8427 6832

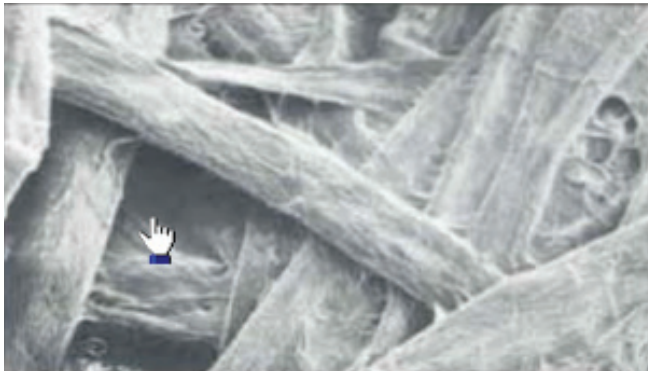
Email & Skype: info@chipsmall.com Web: www.chipsmall.com

Address: A1208, Overseas Decoration Building, #122 Zhenhua RD., Futian, Shenzhen, China

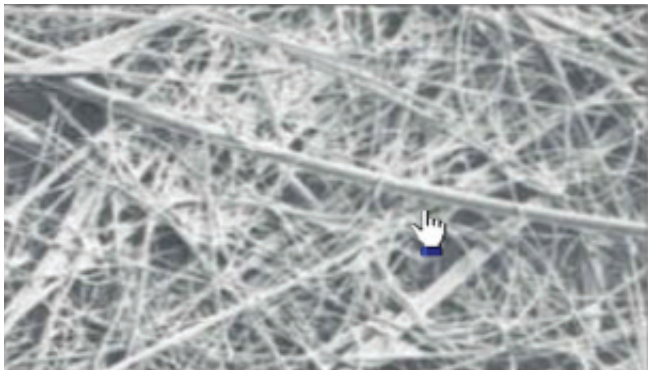


How Filters Trap More Dirt

As illustrated below, the finer the fiber in a filter weave, the greater the ability to trap dirt and other particles, thus decreasing blow-by. The photomicrographs show that the filter has a more effective weave than that of a conventional filter bag. This increases the ability to trap dirt and virtually eliminates blow-by.



Photomicrograph of the fiber weave of a conventional filter bag (500x)



Photomicrograph of the fiber weave of a SCS filter (500x)

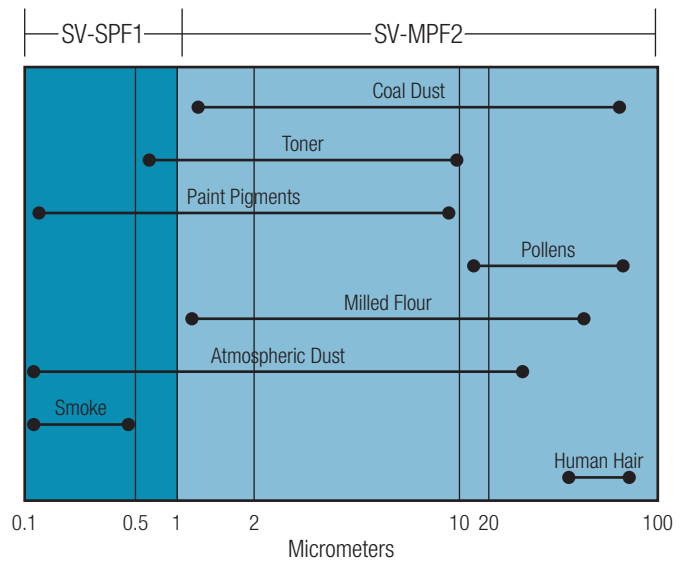
Filter, Type 1 SV-SPF1 Fine Particle Filters

A thinner, more concentrated weave (HEPA media) for trapping extremely fine particles. Typical applications: color laser printers, color copiers and highly sensitive equipment.

Filter, Type 2 SV-MPF2 High Performance Filters

Specially designed for trapping unwanted toner from copiers and laser printers. Also ideal for cleaning keyboards, fans and other household dust collections.

Typical Particle Sizes

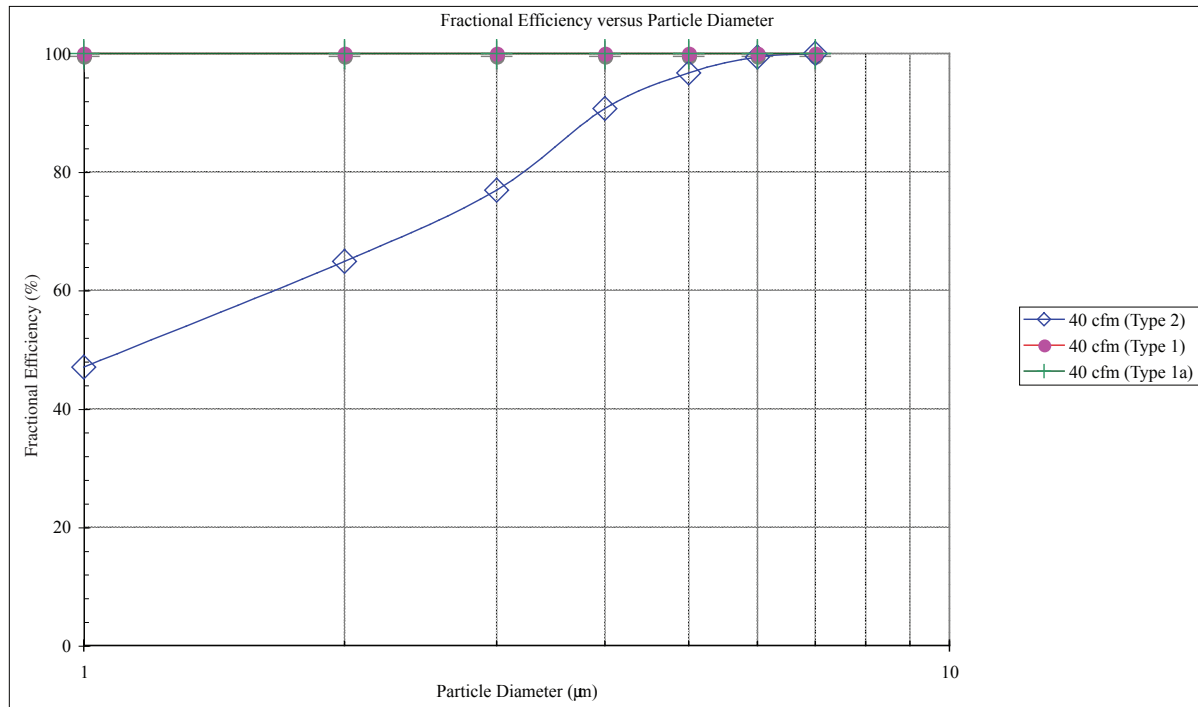


Efficiency

Date :	August 20, 2008
Filter ID :	Type 2 Filter
Test Type :	Fractional Efficiency
Test Aerosol :	KCl, Neutralized
Flow rate(cfm)	40 cfm (Type 2)
Dp (" H2O)	3.079
Size Range (mm)	Fractional Efficiency (%)
0.3-0.5	47.0
0.5-0.7	64.9
0.7-1.0	76.9
1.0-2.0	90.7
2.0-3.0	96.7
3.0-5.0	99.4
>5.0	100.0

Date :	August 20, 2008
Filter ID :	Type 1 Filter
Test Type :	Fractional Efficiency
Test Aerosol :	KCl, Neutralized
Flow rate(cfm)	40 cfm (Type 1)
Dp (" H2O)	3.157
Size Range (mm)	Fractional Efficiency (%)
0.3-0.5	99.980
0.5-0.7	99.991
0.7-1.0	99.999
1.0-2.0	100.000
2.0-3.0	100.000
3.0-5.0	100.000
>5.0	100.000

Date :	August 20, 2008
Filter ID :	Type 1a Filter (HEPA)
Test Type :	Fractional Efficiency
Test Aerosol :	KCl, Neutralized
Flow rate(cfm)	40 cfm (Type 1a)
Dp (" H2O)	3.157
Size Range (mm)	Fractional Efficiency (%)
0.3-0.5	99.988
0.5-0.7	99.995
0.7-1.0	100.000
1.0-2.0	100.000
2.0-3.0	100.000
3.0-5.0	100.000
>5.0	100.000



Typical Loading

"Weight Gain (gram) Alumina Fines"	"Pressure Drop (mm H2O)"
0.0	655.7
454.0	358.0
908.0	168.0
1362.0	70.6
1816.0	5.1
1828.3	2.2

