



Chipsmall Limited consists of a professional team with an average of over 10 year of expertise in the distribution of electronic components. Based in Hongkong, we have already established firm and mutual-benefit business relationships with customers from,Europe,America and south Asia,supplying obsolete and hard-to-find components to meet their specific needs.

With the principle of “Quality Parts,Customers Priority,Honest Operation,and Considerate Service”,our business mainly focus on the distribution of electronic components. Line cards we deal with include Microchip,ALPS,ROHM,Xilinx,Pulse,ON,Everlight and Freescale. Main products comprise IC,Modules,Potentiometer,IC Socket,Relay,Connector.Our parts cover such applications as commercial,industrial, and automotives areas.

We are looking forward to setting up business relationship with you and hope to provide you with the best service and solution. Let us make a better world for our industry!



## Contact us

Tel: +86-755-8981 8866 Fax: +86-755-8427 6832

Email & Skype: info@chipsmall.com Web: www.chipsmall.com

Address: A1208, Overseas Decoration Building, #122 Zhenhua RD., Futian, Shenzhen, China



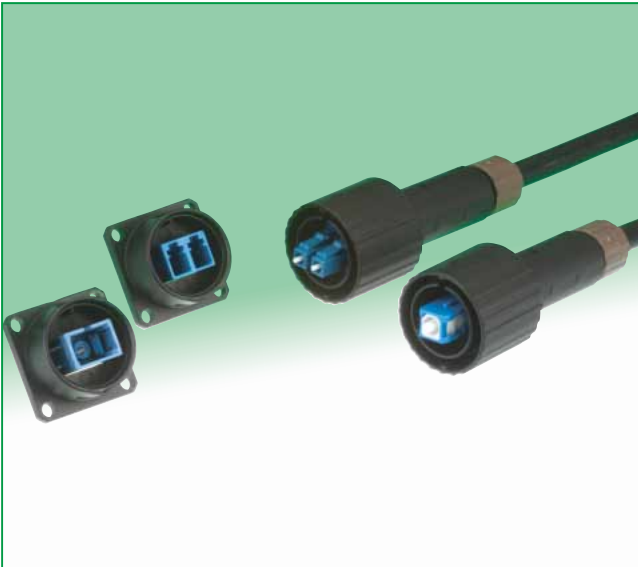
# Waterproof optical connectors with built-in SC/LC-Duplex

SW20 Series

Waterproof

1 or 2 pos.

Bayonet lock



## One action lock/unlock mechanism (Patented)

The schematic illustration of internal mechanism. (in case of LC type)

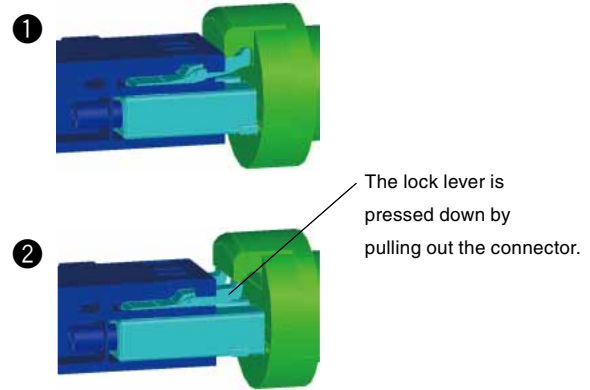


Fig.1

## Features

### 1. Waterproof bayonet lock + standard SC/LC connector

This connector combines a standard optical connector (SC/LC) and optical adaptor(SC/LC), and is covered with a waterproof shell. The bayonet locking mechanism provides a single-action mating/unmating between the receptacle mounted on the chassis and the plug.

### 2. Designed for harsh outdoor environments

Connector has passed a 1,000 hour salt spray test as well as the IP67 waterproof test when mated or with protective caps in place.

### 3. Common housing for SW20-SC and SW20-LC

The waterproof outer shell can be used for both the SW20-SC and SW20-LC. This feature simplifies procedures for mounting, mating and unmating.

### 4. Standard SC/LC connectors for testing

Any cord with a standard optical connector can be used for operation tests during assembly or installation, when water resistance is unnecessary. No special cord is needed.

### 5. Easy on-site maintenance

In the event of damage, the end face can be repaired by replacing the internal standard patch cord. This eliminates the need for replacement of the entire receptacle. (Fig.2)

## During maintenance and repair

Only the harness parts are replaced.

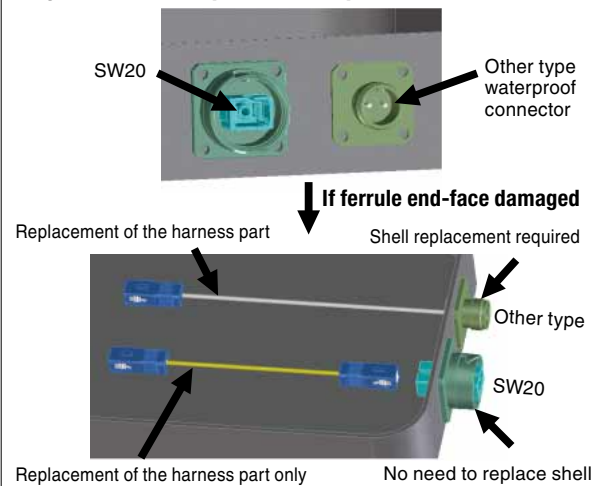


Fig.2

## Product Specifications

Ratings	Operating temperature range	-40°C to +85°C	Storage temperature range	-25°C to +70°C (AT PACKING)
	Item	Test method	Requirements	
Construction	General examnation.	Visually and by measuring instrument.	Accoding to drawing.	
	Marking	Confirmed visually.		
Optical characteristics (SM)	Insertion loss	Wavelength 1310±30nm(LD) Wavelength 1550±30nm(LD)	SW side-1310nm: 0.4dB max., 1550nm: 0.5dB max. SC side- 1310nm: 0.3dB max., 1550nm: 0.4dB max.	
	Return loss	Wavelength 1310±30nm(LD)	SW side: 40dB min.(SM), 22dB min.(GI) SC side: 40dB min.(SM), 22dB min.(GI)	
Mechanical characteristics	Tensile strength(axial)	A tensile force to cable axially for 1 minutes at 200N.	Insertion loss range: ≤ 0.3dB No Looseness,breakage,cracks	
	Durability (mating/un-mating)	200 times	1) Insertion loss fluctuation after test:0.3dB max. 2) No visible damage or components dislocation.	
	Vibration	Frequency: 10 to 55Hz, single amplitude of 0.75mm, acceleration of 98.1 m/s <sup>2</sup> , 2 hours in each of the 3 axis.		
	Shock	Acceleration of 981 m/s <sup>2</sup> , 6 ms duration, half sine shock pulse,10 cycles in each of the 3 axis.		
Environmental characteristics	Humidity (Temperature/humidity-cycles)	-10°C to +65°C, humidity: 90% to 100% 168hours. (12H/cycle×14cycle) (Telcordia GR3120-CORE)	1) Insertion loss fluctuation after test:0.3dB max. 2) No visible damage or components dislocation.	
	Temperature cycle	-40°C to +75°C, 42 cycles,168hours. (8H/cycle×42cycle)(Telcordia GR326-CORE)		
	Dry heat	240 hours at +85°C		
	Cold	240 hours at -40°C	No heavy corrosion ruin the function.	
	Salt mist	Salt mist :5% and temperature 35°C or 1000hours.		
	Water resistance (mating)	Put the product under water for 1min, with air pressure 4.9kPa.		

## Material & Finish

Part	Plug		Receptacle	
	Material	Finish/Remarks	Material	Finish/Remarks
Housing	Zinc alloy die casting	Chrome plated	Zinc alloy	Chrome plated
	Synthetic resin	UL94V-0		
Oring/gasket	Synthetic rubber	—	Synthetic rubber	—
SC/LC	Depend on each connector. (Synthetic resin,Zirconia,spring)	—	Depend on each adapter. (Synthetic resin,Zirconia)	—
Spring	Steel wire	—	—	—
Others (Internal part)	Phosphor bronze	Nickel plated	—	—
	Zinc alloy	Nickel plated	—	—
	Stainless steel	—	—	—

## Ordering information

### (1) Plug Assembly

**SW20** - **SC** **P** **T75** - **1** - **SC** - **LM** - **1**

①
②
③
④
⑤
⑥
⑦
⑧

① Series name : SW20	⑤ Suffix
② Connector type : SC...SW20-SC plug LC...SW20-LC plug	⑥ Connector type at the other side ("P2" when SW20 plugs are at both ends)
③ Assembly type P : Single ended P2 : Double ended	⑦ Length in meter
④ Cable type T75 : $\phi 7$ round cable. If you would like other cables, please contact us.	⑧ Suffix

Please contact us in case you need Plug kit only.

### (2) Receptacle

**SW20** - **SC** **R** - **1**

①
②
③
④

① Series name : SW20	③ Receptacle R:Receptacle
② Connector type: SC...SW20-SC receptacle LC...SW20-LC recetacle	④ Suffix

### (3) Receptacle cap

**SW20** - **RC** **1**

①
②
③

① Series name : SW20	③ Suffix 1:Waterproof cap 3:Dustproof cap(Not waterproof)
② Receptacle cap RC:Receptacle cap	

### (4) Adaptor

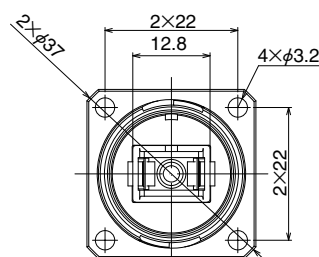
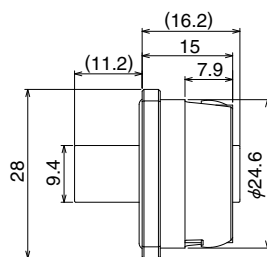
**SW20** - **LC** **A** - **1**

①
②
③
④

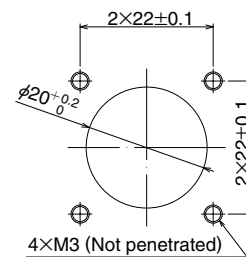
① Series name : SW20	③ Adaptor A:Adaptor
② Connector type: LC...SW20-LC adaptor	④ Suffix

## Receptacle

### ● SC type



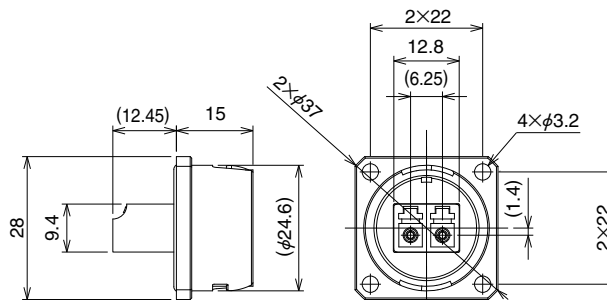
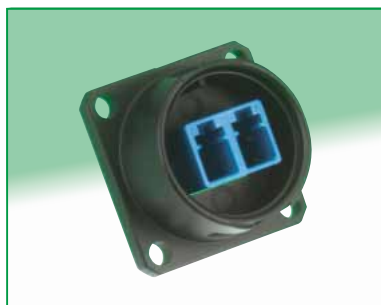
### Recommended panel cutouts



Part No.	HRS No.	Packing style
SW20-SCR-1(01)	717-5002-2 01	1pcs/pack(1 to 9 pcs)
SW20-SCR-1(02)	717-5002-2 02	Tray(10 pcs or more)

Note:LC-type's cutout same as SC-type.

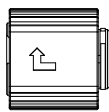
### ● LC type



Part No.	HRS No.	Packing style
SW20-LCR-1	717-5004-8 00	1pcs/pack(1 to 9 pcs), Tray(10 pcs or more)

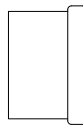
## ■ Receptacle Cap

### ● Waterproof type



Part No.	HRS No.	Packing style
SW20-RC1(01)	717-5501-2 01	1 pcs/pack

### ● Dustproof type

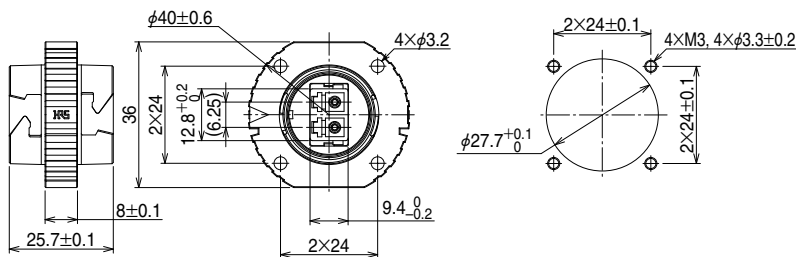


Part No.	HRS No.	Packing style
SW20-RC3	717-5504-0	1 pcs/pack

Note : Without waterproof.

## ■ Adaptor

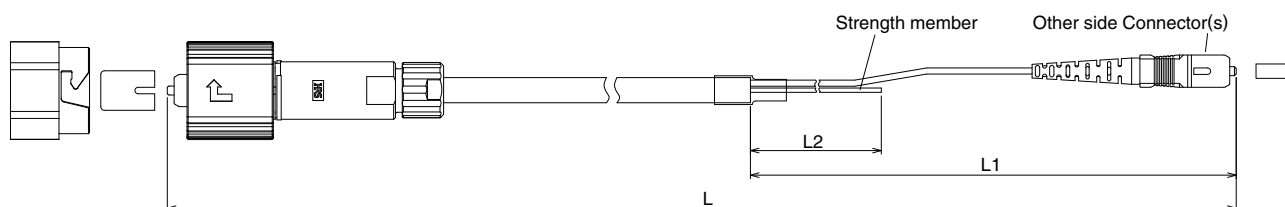
### ● LC type



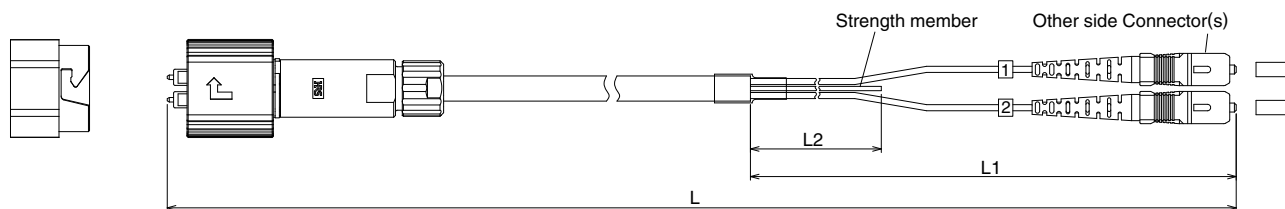
Part No.	HRS No.	Packing style
SW20-LCA-1	717-5028-6 00	1 pcs/pack

## ◆ How to Specify Plug Cable Assembly

SW20-SCPT75-2-SC-LM-\*



SW20-LCPT75-1-SC-LM-\*



Note 1 : Please specify "L", "L1", and "L2".

Note 2 : Please ask us about custom assemblies, For example you may require an alternate central strength member for the cable or different connectors on the opposite end.



## HIROSE ELECTRIC CO.,LTD.

2-6-3,Nakagawa Chuoh,Tsuzuki-Ku,Yokohama-Shi 224-8540,JAPAN  
 TEL: +81-45-620-3526 Fax: +81-45-591-3726  
<http://www.hirose.com>  
<http://www.hirose-connectors.com>