



Chipsmall Limited consists of a professional team with an average of over 10 year of expertise in the distribution of electronic components. Based in Hongkong, we have already established firm and mutual-benefit business relationships with customers from,Europe,America and south Asia,supplying obsolete and hard-to-find components to meet their specific needs.

With the principle of “Quality Parts,Customers Priority,Honest Operation,and Considerate Service”,our business mainly focus on the distribution of electronic components. Line cards we deal with include Microchip,ALPS,ROHM,Xilinx,Pulse,ON,Everlight and Freescale. Main products comprise IC,Modules,Potentiometer,IC Socket,Relay,Connector.Our parts cover such applications as commercial,industrial, and automotives areas.

We are looking forward to setting up business relationship with you and hope to provide you with the best service and solution. Let us make a better world for our industry!



Contact us

Tel: +86-755-8981 8866 Fax: +86-755-8427 6832

Email & Skype: info@chipsmall.com Web: www.chipsmall.com

Address: A1208, Overseas Decoration Building, #122 Zhenhua RD., Futian, Shenzhen, China

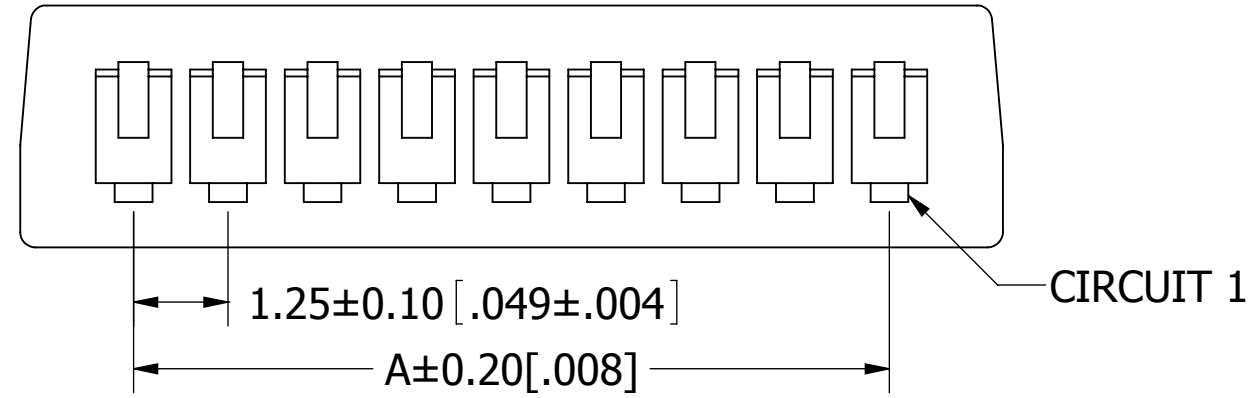


PART NUMBER CODING

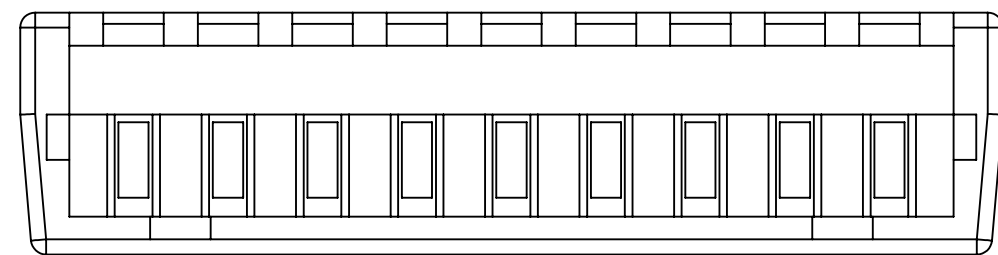
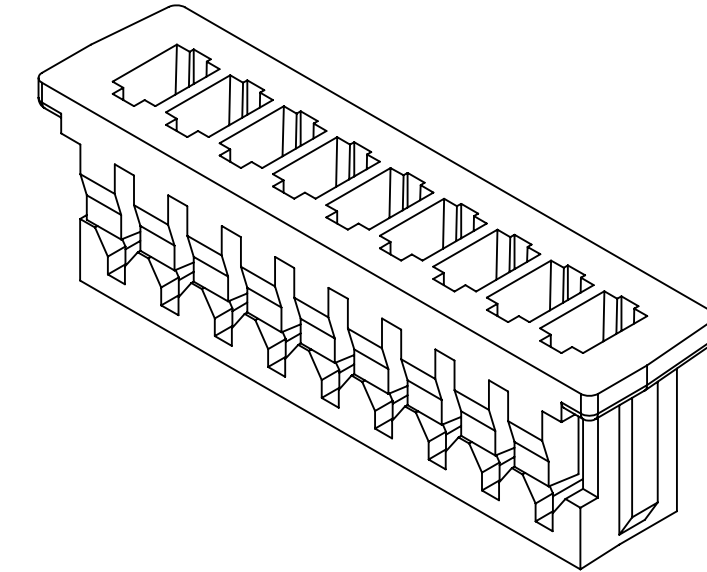
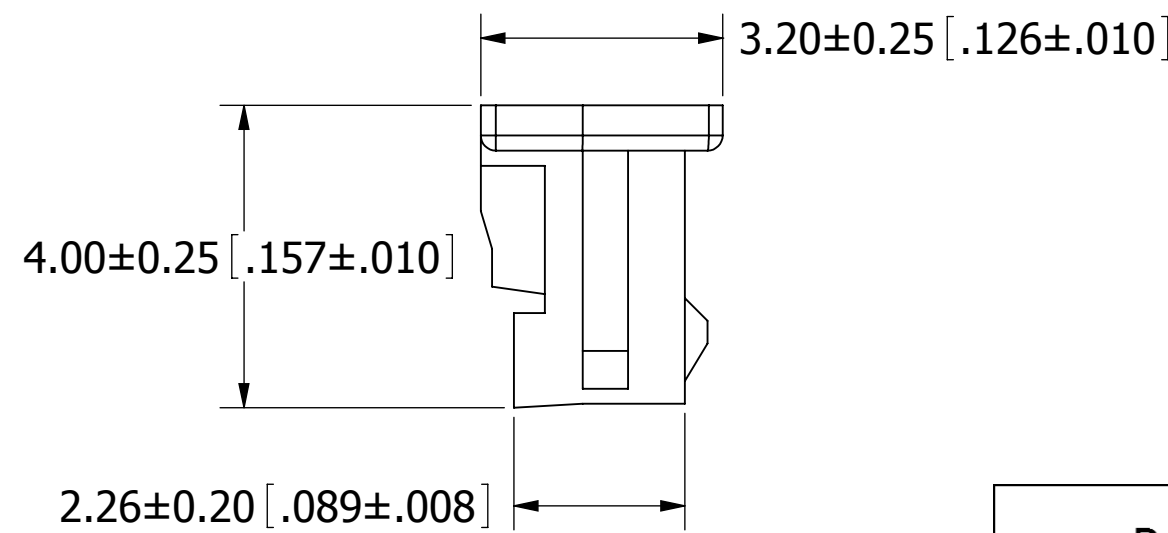
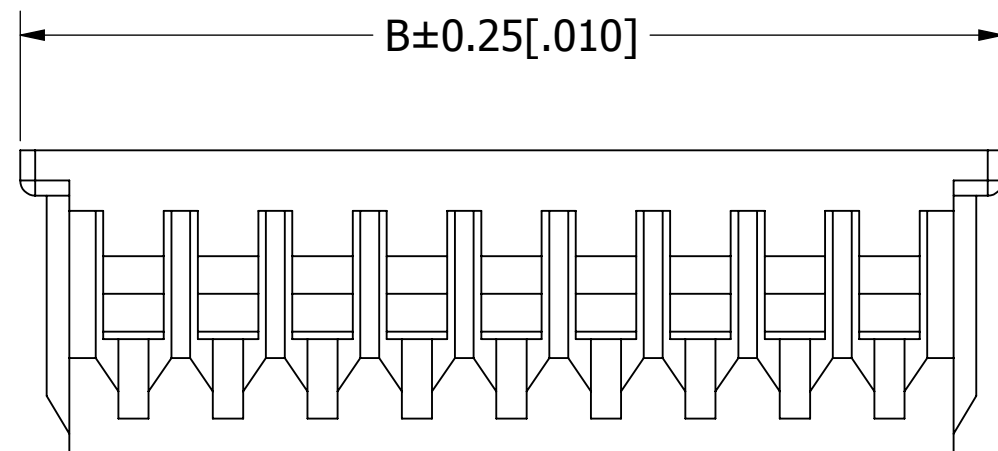
SWH120-PULG-S__-UU-WH

NUMBER OF POSITIONS
(CONTACTS PER ROW)

REVISIONS				
REV.	ECO. NO	DESCRIPTION	DATE	BY
A	2002	INITIAL RELEASE	7/17/2009	JH



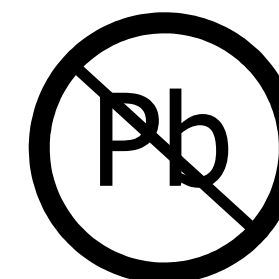
CIRCUIT 1



Part Number	Positions/ Contacts	A		B	
		MM	INCH	MM	INCH
SWH120-PULG-S02-UU-WH	02/02	1.25	0.049	4.25	0.167
SWH120-PULG-S03-UU-WH	03/03	2.50	0.098	5.50	0.217
SWH120-PULG-S04-UU-WH	04/04	3.75	0.148	6.75	0.266
SWH120-PULG-S05-UU-WH	05/05	5.00	0.197	8.00	0.315
SWH120-PULG-S06-UU-WH	06/06	6.25	0.246	9.25	0.364
SWH120-PULG-S07-UU-WH	07/07	7.50	0.295	10.50	0.413
SWH120-PULG-S08-UU-WH	08/08	8.75	0.344	11.75	0.463
SWH120-PULG-S09-UU-WH	09/09	10.00	0.394	13.00	0.512
SWH120-PULG-S10-UU-WH	10/10	11.25	0.443	14.25	0.561
SWH120-PULG-S11-UU-WH	11/11	12.50	0.492	15.50	0.610
SWH120-PULG-S12-UU-WH	12/12	13.75	0.541	16.75	0.659
SWH120-PULG-S13-UU-WH	13/13	15.00	0.591	18.00	0.709
SWH120-PULG-S14-UU-WH	14/14	16.25	0.640	19.25	0.758
SWH120-PULG-S15-UU-WH	15/15	17.50	0.689	20.50	0.807

NOTES:

- INSULATOR MATERIAL: PBT, UL94V-0, COLOR:WHITE.
- CURRENT RATING: 1 AMP.
- VOLTAGE RATING: 125V AC/DC.
- INSULATOR RESISTANCE: 100 MEGOHMS MIN.
- CONTACT RESISTANCE: 20 MILLIOHMS MAX.
- DIELECTRIC WITHSTANDING VOLTAGE: 500V AC.
- OPERATING TEMPERATURE: -25° C TO +85° C.
- SUITABLE FOR SWT120 SERIES TERMINAL.
- MATES WITH SWR120 SERIES WAFER.



RoHS COMPLIANT

UNLESS OTHERWISE SPECIFIED:

DIMENSIONS ARE IN MM(INCHES)

TOLERANCES:

ANGULAR: ± 5°

.X= ± .3 [.01]

.XX= ± .15 [.006]

.XXX= ± .050 [.0020]

SURFACE FINISH: 63 R_a

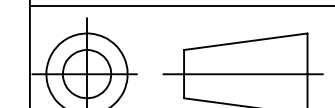
REMOVE ALL BURRS AND SHARP EDGES .010 MAX

INTERPRET DIMENSIONS AND GEOMETRIC TOLERANCING PER: ANSI Y14.5M-1994

DRAWN 7/28/2009 JH

DATE 7/28/2009 NAME JH

THE INFORMATION HEREIN CONTAINS PROPRIETARY INFORMATION OF SULLINS ELECTRONICS AND IS NOT TO BE REPRODUCED, USED OR DISCLOSED TO OTHERS FOR ANY PURPOSE EXCEPT AS SPECIFICALLY AUTHORIZED IN WRITING BY AN OFFICER OF SULLINS ELECTRONICS.



SULLINS
CONNECTOR SOLUTIONS

DESCRIPTION
HOUSING, 1.25mm CC, 1 ROW

PART NUMBER
SWH120-PULG-S__-UU-WH

SIZE DWG. NO. REV
C 11291 **A**

SCALE: 10:1 SHEET 1 OF 1