



Chipsmall Limited consists of a professional team with an average of over 10 year of expertise in the distribution of electronic components. Based in Hongkong, we have already established firm and mutual-benefit business relationships with customers from,Europe,America and south Asia,supplying obsolete and hard-to-find components to meet their specific needs.

With the principle of “Quality Parts,Customers Priority,Honest Operation,and Considerate Service”,our business mainly focus on the distribution of electronic components. Line cards we deal with include Microchip,ALPS,ROHM,Xilinx,Pulse,ON,Everlight and Freescale. Main products comprise IC,Modules,Potentiometer,IC Socket,Relay,Connector.Our parts cover such applications as commercial,industrial, and automotives areas.

We are looking forward to setting up business relationship with you and hope to provide you with the best service and solution. Let us make a better world for our industry!



## Contact us

Tel: +86-755-8981 8866 Fax: +86-755-8427 6832

Email & Skype: info@chipsmall.com Web: www.chipsmall.com

Address: A1208, Overseas Decoration Building, #122 Zhenhua RD., Futian, Shenzhen, China

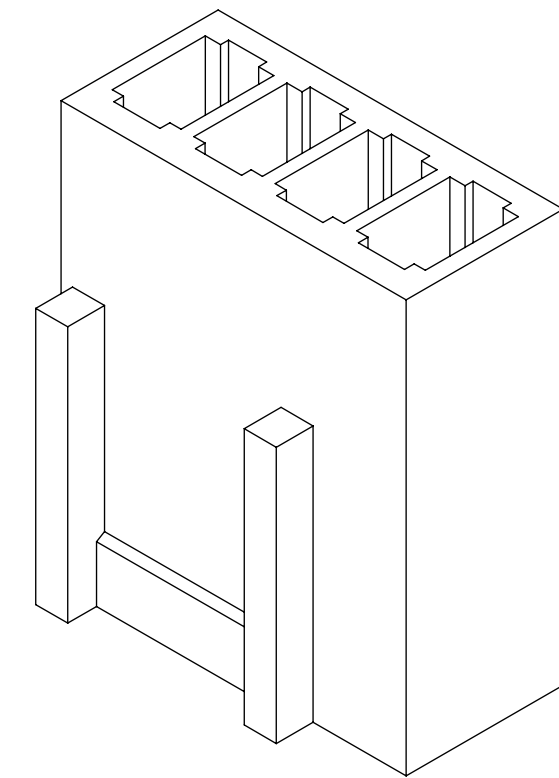
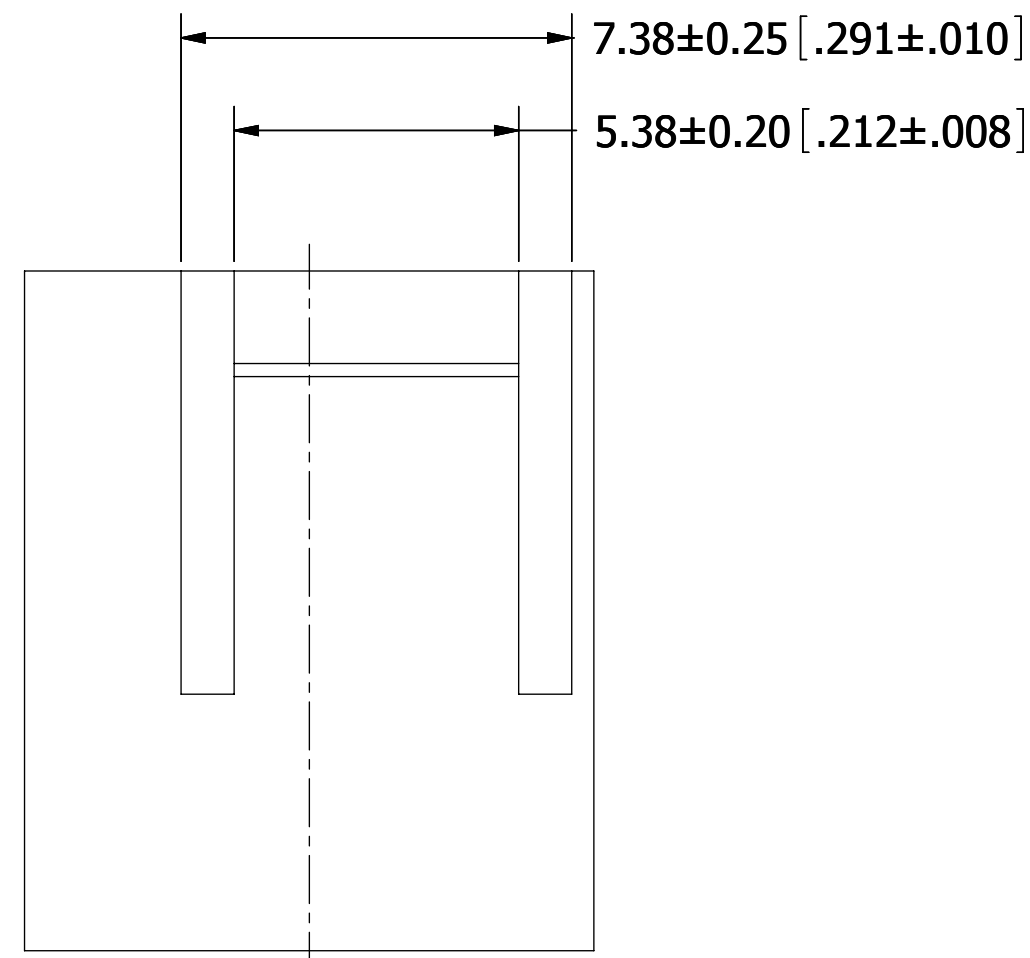
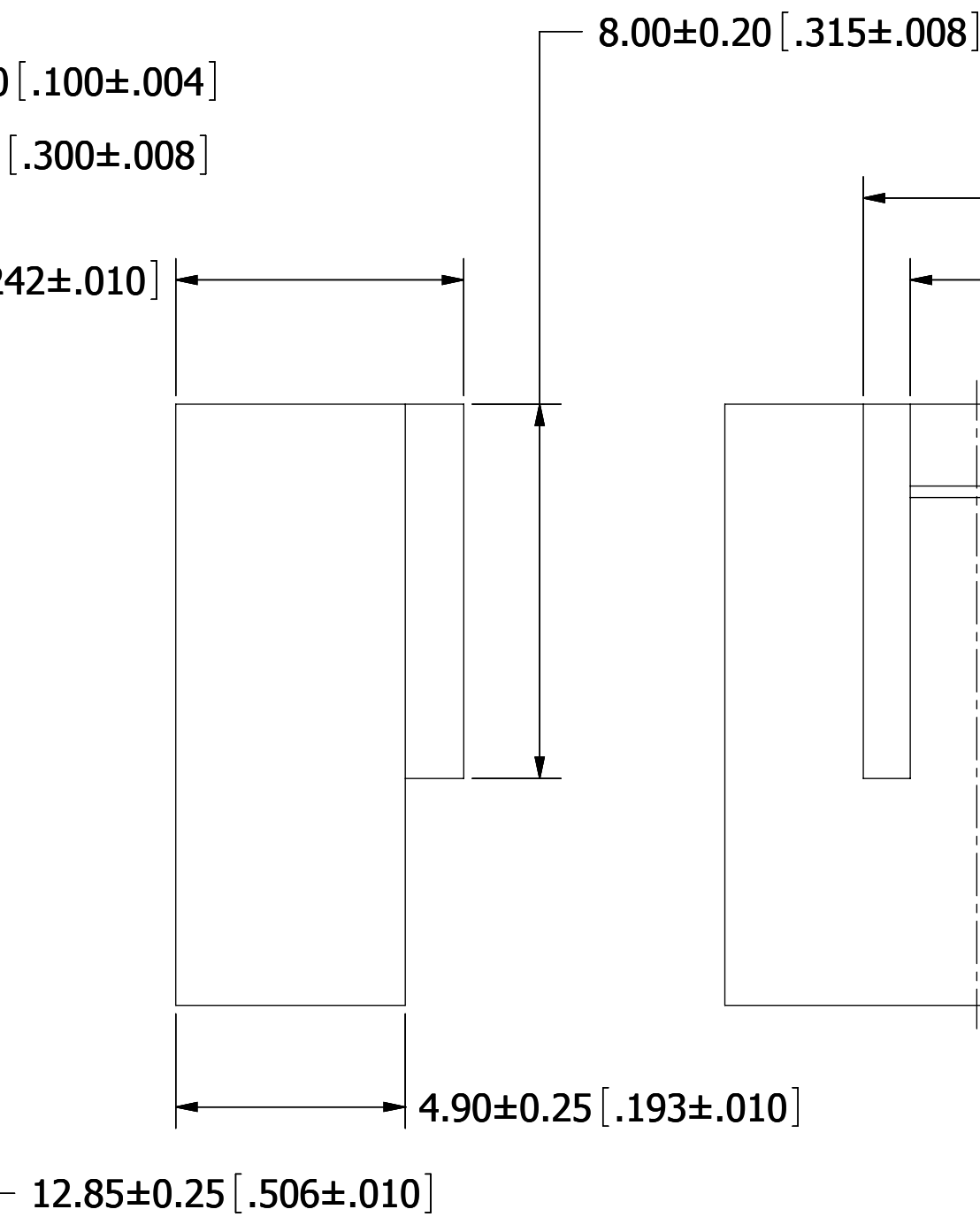
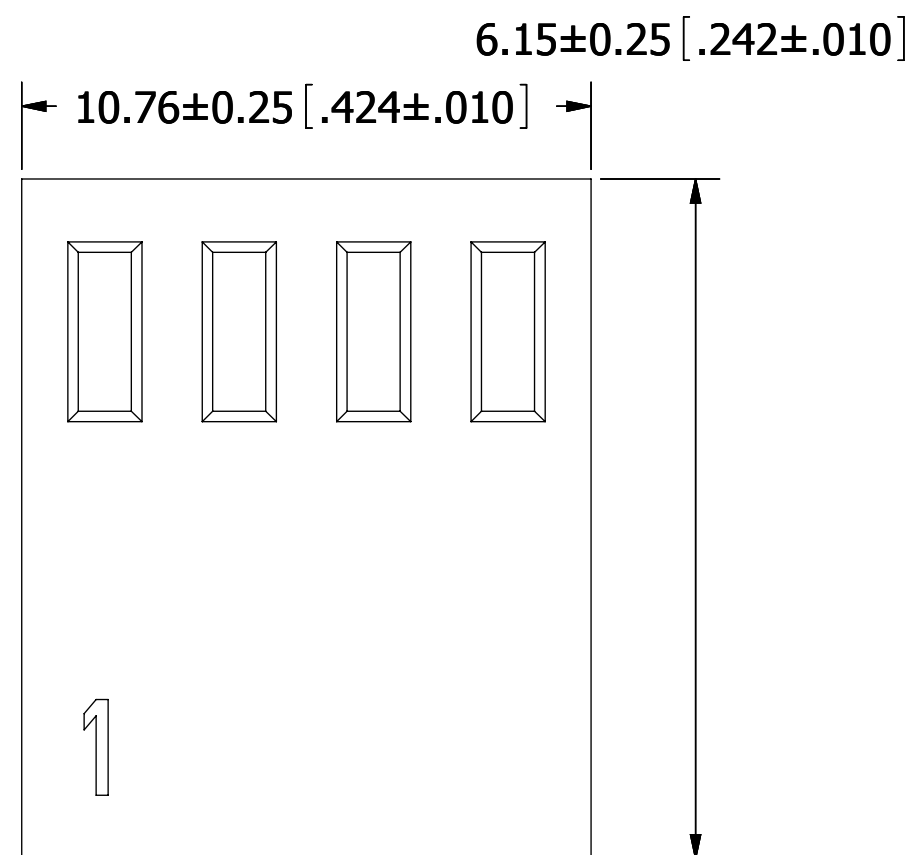
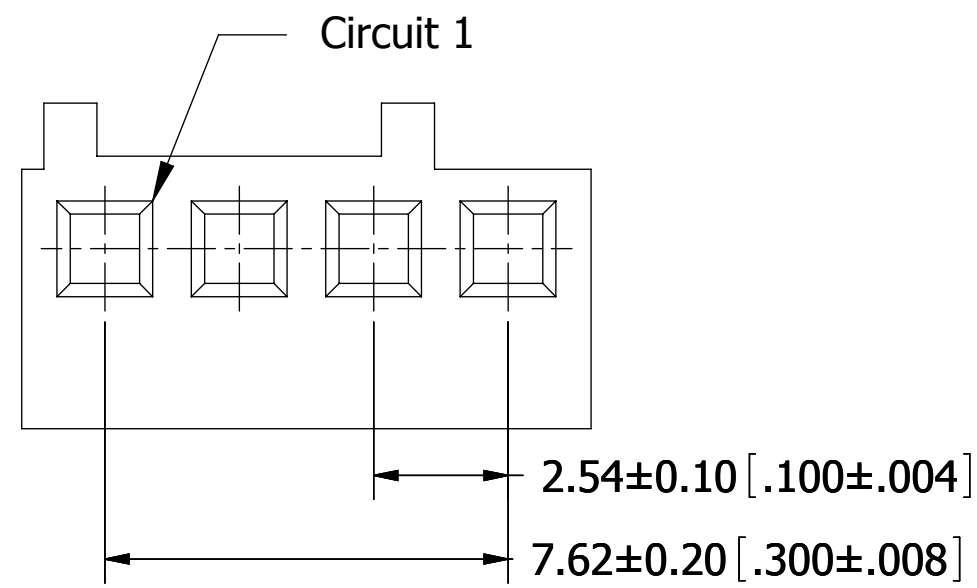


# PART NUMBER CODING

## SWH25C-NULC-S04-UU-WH

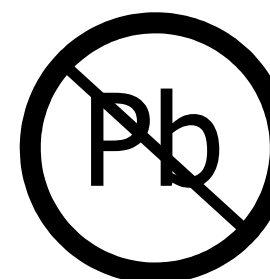
**NUMBER OF POSITIONS**

(CONTACTS PER ROW)



### NOTES:

1. INSULATOR MATERIAL: NYLON66, UL94V-0, COLOR: WHITE.
2. CURRENT RATING: 4 AMPS.
3. VOLTAGE RATING: 250V AC/DC.
4. INSULATOR RESISTANCE: 1000 MEGOHMS MIN.
5. CONTACT RESISTANCE: 10 MILLIOHMS MAX.
6. DIELECTRIC WITHSTANDING VOLTAGE: 1000V AC.
7. OPERATING TEMPERATURE: -25° C TO +85° C.
8. SUITABLE FOR SWT25X SERIES TERMINAL.
9. MATES WITH SWR25C SERIES SINGLE ROW WAFER.



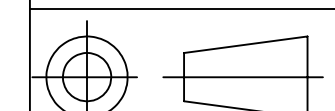
RoHS COMPLIANT

REVISIONS				
REV.	ECO. NO	DESCRIPTION	DATE	BY
A	2006	INITIAL RELEASE	9/17/09	JH

UNLESS OTHERWISE SPECIFIED:  
 DIMENSIONS ARE IN MM(INCHES)  
 TOLERANCES:  
 ANGULAR: ± 5°  
 .X= ± .3 [.01]  
 .XX= ± .15 [.006]  
 .XXX= ± .500 [.0020]  
 SURFACE FINISH: 63 R<sub>a</sub>  
 REMOVE ALL BURRS AND SHARP EDGES .010 MAX

INTERPRET DIMENSIONS AND GEOMETRIC TOLERANCING PER: ANSI Y14.5M-1994

DRAWN	DATE	NAME
JH	9/17/09	JH



DESCRIPTION <b>HOUSING 2.54mm CC, 1 ROW</b>		
PART NUMBER <b>SWH25C-NULC-S04-UU-WH</b>		
SIZE	DWG. NO.	REV
<b>C</b>	<b>11401</b>	<b>A</b>
SCALE: 7:1		SHEET 1 OF 1