



Chipsmall Limited consists of a professional team with an average of over 10 year of expertise in the distribution of electronic components. Based in Hongkong, we have already established firm and mutual-benefit business relationships with customers from,Europe,America and south Asia,supplying obsolete and hard-to-find components to meet their specific needs.

With the principle of “Quality Parts,Customers Priority,Honest Operation,and Considerate Service”,our business mainly focus on the distribution of electronic components. Line cards we deal with include Microchip,ALPS,ROHM,Xilinx,Pulse,ON,Everlight and Freescale. Main products comprise IC,Modules,Potentiometer,IC Socket,Relay,Connector.Our parts cover such applications as commercial,industrial, and automotives areas.

We are looking forward to setting up business relationship with you and hope to provide you with the best service and solution. Let us make a better world for our industry!



Contact us

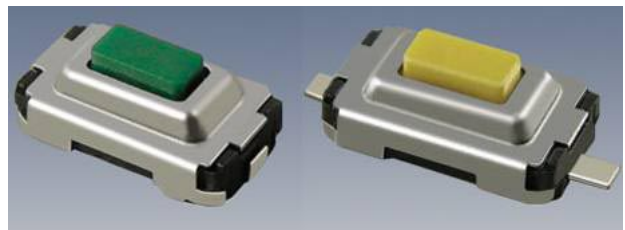
Tel: +86-755-8981 8866 Fax: +86-755-8427 6832

Email & Skype: info@chipsmall.com Web: www.chipsmall.com

Address: A1208, Overseas Decoration Building, #122 Zhenhua RD., Futian, Shenzhen, China



Model SWT3
Tactile Switches, 6 X 3.5 mm
RoHS Compliant
SMD



New Product

MODELS AVAILABLE

Top Actuation G Pin	SWT3-G
Top Actuation G Pin w/ ground	SWT3-X
Top Actuation J Pin	SWT3-J
Top Actuation J Pin w/ ground	SWT3-Z

ELECTRICAL

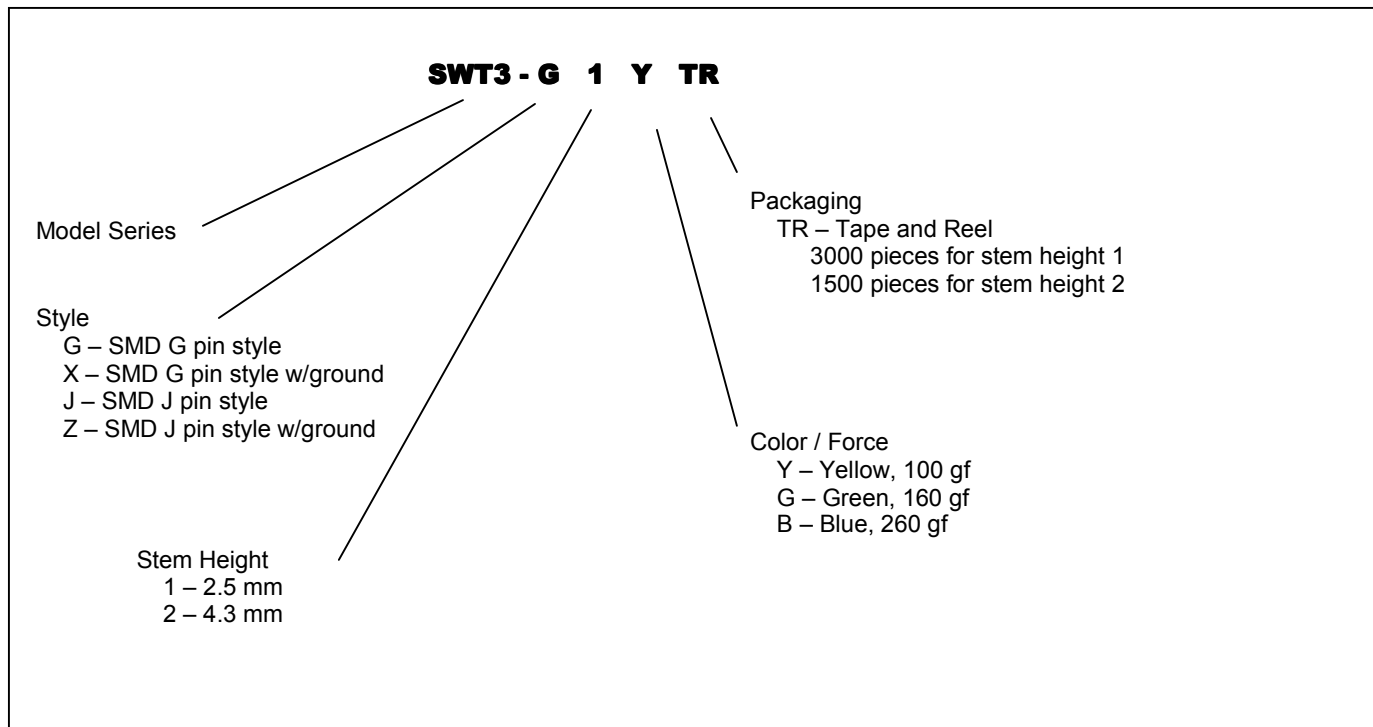
Contact Resistance	100 mΩ
Insulation Resistance	100 M Ω min
Dielectric Strength	AC 250V
Rating	DC 12V, 50 mA
Contact Arrangement	Single throw single pole

ENVIRONMENTAL

Life Mechanical	50K Cycles
Operating Force Range (refer to operating force table)	100 gf – 260 gf
Operating Temperature Range	-20°C – 70°C
Storage Temperature Range	-30°C – 80°C
Stop Strength	Vertical Static Load of 3 kgf
Vibration	Mil-STD-202F, Method 201A
Shock	Mil-STD-202F, Method 213B Condition A
Soldering	Recommendations available upon request

Model SWT3

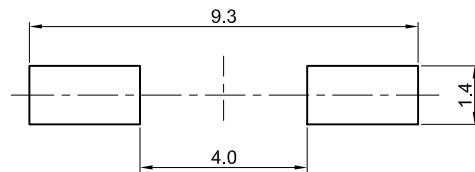
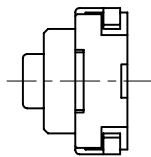
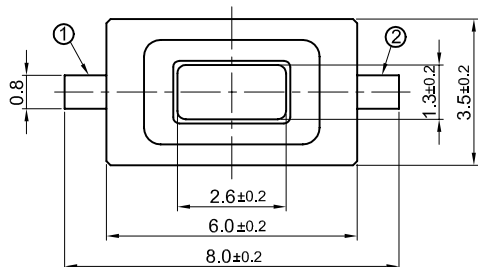
ORDERING INFORMATION



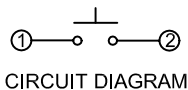
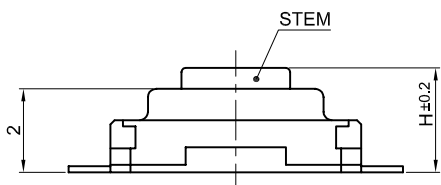
Model SWT3

OUTLINE DRAWINGS

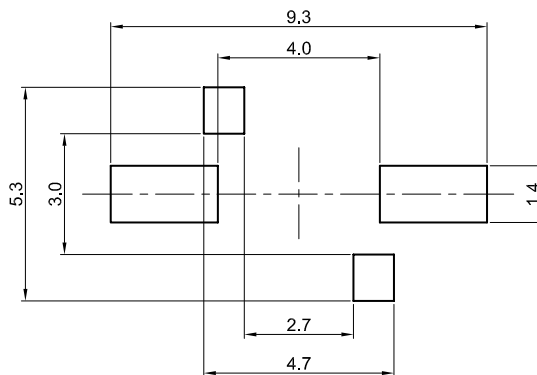
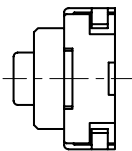
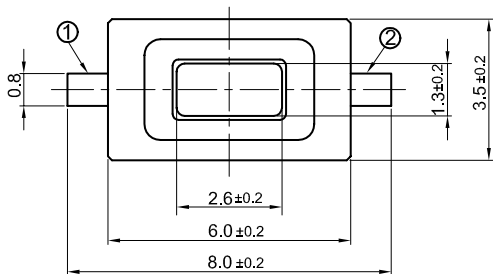
SWT3-G Top Actuation, G pin



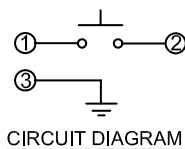
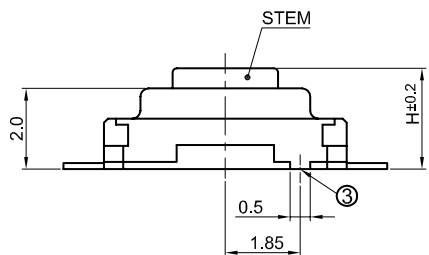
PRINTED CIRCUIT BOARD DIMENSIONS
(WHEN VIEWED FROM SWITCH MOUNTING SURFACE)



SWT3-X Top Actuation, G pin with Ground

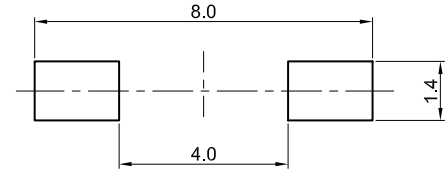
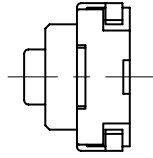
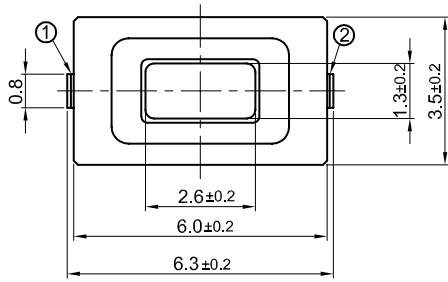


PRINTED CIRCUIT BOARD DIMENSIONS
(WHEN VIEWED FROM SWITCH MOUNTING SURFACE)

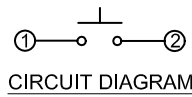
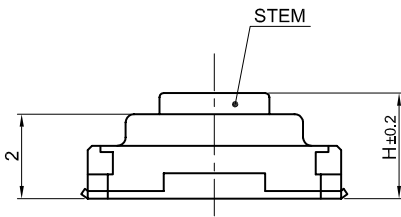


Model SWT3

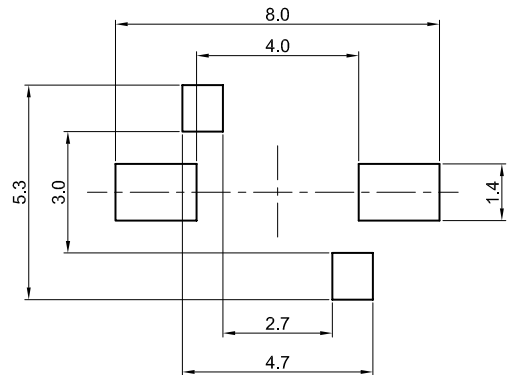
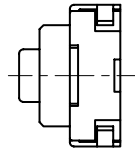
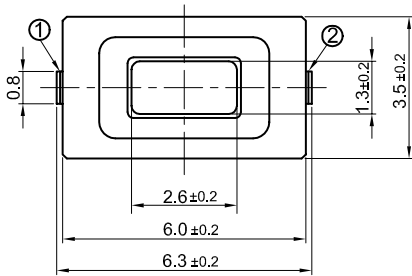
SWT3-J Top Actuation, J pin



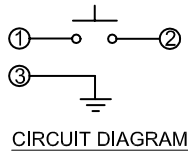
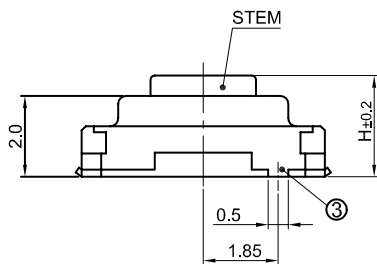
PRINTED CIRCUIT BOARD DIMENSIONS
(WHEN VIEWED FROM SWITCH MOUNTING FACE)



SWT3-Z Top Actuation, J pin with Ground



PRINTED CIRCUIT BOARD DIMENSIONS
(WHEN VIEWED FROM SWITCH MOUNTING FACE)



Model SWT3

PACKAGING

