



Chipsmall Limited consists of a professional team with an average of over 10 year of expertise in the distribution of electronic components. Based in Hongkong, we have already established firm and mutual-benefit business relationships with customers from,Europe,America and south Asia,supplying obsolete and hard-to-find components to meet their specific needs.

With the principle of “Quality Parts,Customers Priority,Honest Operation,and Considerate Service”,our business mainly focus on the distribution of electronic components. Line cards we deal with include Microchip,ALPS,ROHM,Xilinx,Pulse,ON,Everlight and Freescale. Main products comprise IC,Modules,Potentiometer,IC Socket,Relay,Connector.Our parts cover such applications as commercial,industrial, and automotives areas.

We are looking forward to setting up business relationship with you and hope to provide you with the best service and solution. Let us make a better world for our industry!



Contact us

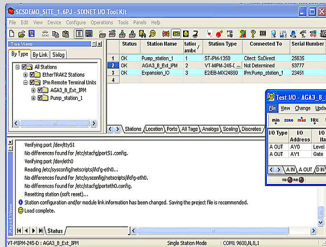
Tel: +86-755-8981 8866 Fax: +86-755-8427 6832

Email & Skype: info@chipsmall.com Web: www.chipsmall.com

Address: A1208, Overseas Decoration Building, #122 Zhenhua RD., Futian, Shenzhen, China



▶▶▶ Industrial Automation Software



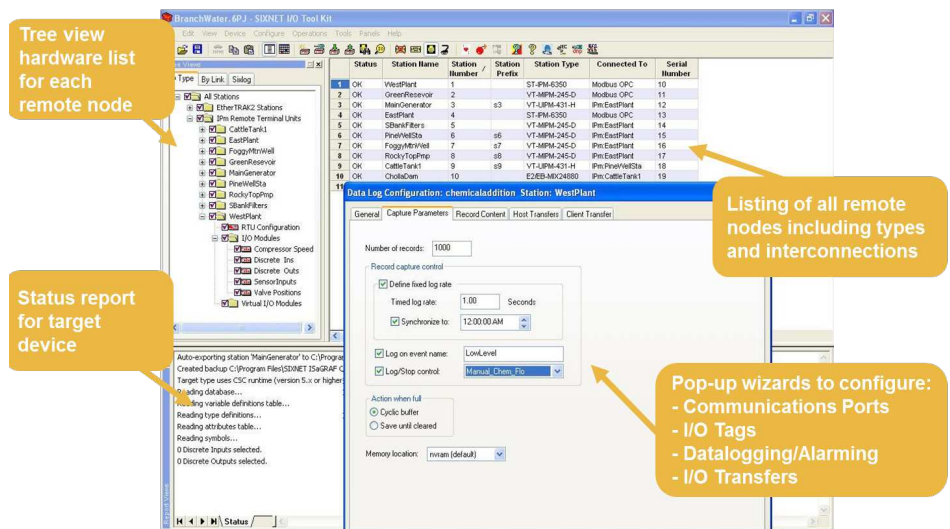
PRODUCT HIGHLIGHTS

- All-in-one utility for all Sixnet systems
- Configure, calibrate and test
- Complete project support in one project file
- Optional Features Sets
 - SCS (Scalable Control System) Features
 - Datalogging
 - RTU Advanced Features

APPLICATIONS

- Manufacturing
- Transportation
- Oil & Gas
- Mining
- Maritime

SXTOOLS is a completely integrated suite of project-oriented tools that help you quickly and effectively view the "big picture" as you design, install and maintain your Sixnet systems. Unlike most configuration tools that view each device as stand-alone islands, SXTOOLS provides a view of the entire network of Sixnet devices both RTUs and I/O.



Easily view all system elements

- Projects with hundreds of stations and with tens of thousands of tags may be viewed as a complete entity. Interactions between system elements are organized for you and then documented
- Setup wizards guide you through step-by-step configuration of Sixnet products and software features.

Data filtering and sorting

- Project trees enable you to view the system from multiple viewpoints, including by physical location, by logical (communications tree) connections, and by product type. Data can be filtered and sorted to let you focus on any aspect of the system at any time.

Real-Time alerts

- Advanced real-time error checking alerts you to potential problems as soon as they appear.

- This feature set includes importing, tag name exporting to other applications and I/O transfers between Sixnet and Modbus devices.
- This feature set includes Sixlog datalogging, automatic host transfers and client transfers and the Datalog Server.
- Gain access to LINUX-visible features in RTU controllers, including file loading and advanced diagnostics using Telnet and/or ftp. Includes RTU Advanced Development Kit, which provides a library of functions to access the RTU I/O registers and ability to write C programs for use in your RTU controllers.

▶▶▶ Sixnet Tool Kit Specifications

SXTOOLS-1 provides basic configuration and maintenance tools for Sixnet hardware, and is supplied at no cost. Optional feature sets are specified by simply choosing the SXTOOLS part number (see below) that includes the number of optional feature sets that you wish to purchase. When you register your software, you will be prompted to choose which feature sets you wish to activate.

SXTOOLS-1	Level 1 configure, calibrate and test Sixnet I/O and RTUs	FREE download
SXTOOLS-2	Level 1 plus one optional Feature Set	see below
SXTOOLS-3	Level 1 plus two optional Feature Sets	see below
SXTOOLS-4	Level 1 plus three optional Feature Sets	see below
SXTOOLS-5	Level 1 plus four optional Feature Sets	see below
SXTOOLS-P	Special Edition I/O Tool Kit software for configuration, diagnostics, datalogging, AGA, DNP-3, SCS and more (For use with VT-MIPM-135 & 245 only)	

		Common Feature Sets		
		SCS Support	Datalog	IPm Advanced
Configure stations and I/O	✓	-	-	-
Calibrate analog I/O	✓	-	-	-
Test I/O (read , write registers)	✓	-	-	-
Load basic configuration	✓	-	-	-
Export up to 32 I/O to ISaGRAF	✓	-	-	-
Load custom user files	✓	-	-	-
Export >I/O to ISaGRAF	-	✓	-	-
Export I/O to CSV and others	-	✓	-	-
Import I/O tag information	-	✓	-	-
I/O Transfers (peer to peer)	-	✓	-	-
Complete datalog functionality	-	-	✓	-
Support for C Programmers	-	-	-	✓
IPm I/O Database library license	-	-	-	✓

SXIPM-AGA-1	AGA gas flow calculations add-on for IPm RTUs. (single copy license) Note: this option is built-in to the VT-MIPM-135 & 245, see SXTOOLS-P
SXIPM-DNP3-1	DNP (Distributed Network Protocol) add-on for IPm RTUs. (single copy license) Note: this option is built-in to the VT-MIPM-135 & 245, see SXTOOLS-P
SXIPM-IEC870-1	Slave driver for IPm-based Controllers and industrial RTUs. (single copy license)
SXIPM-PPP-1	Add port forwarding to your IPm stations. (site licensed)
SXIPM-SAFE	Protect your IPm stations from unauthorized access with this firewall application. (site licensed)
SXIPM-SNMP	Obtain valuable network management information from your IPm stations and read / write I/O. (site licensed)

Add-ons are purchased separately and licensed/configured through the Tool kit.

Visit: www.sixnet.com/product/addon-software-123.cfm to learn more

All specifications are subject to change. Contact Sixnet to learn more.



www.redlion.net

Connect. Monitor. Control.

Americas
sales@redlion.net

Asia-Pacific
asia@redlion.net

**Europe
Middle East
Africa**
europe@redlion.net

+1 (717) 767-6511

As the global experts in communication, monitoring and control for industrial automation and networking, Red Lion has been delivering innovative solutions for over forty years. Our award-winning technology enables companies worldwide to gain real-time data visibility that drives productivity. Product brands include Red Lion, N-Tron and Sixnet. With headquarters in York, Pennsylvania, the company has offices across the Americas, Asia-Pacific and Europe. For more information, please visit www.redlion.net. Red Lion is a Spectris company.