



Chipsmall Limited consists of a professional team with an average of over 10 year of expertise in the distribution of electronic components. Based in Hongkong, we have already established firm and mutual-benefit business relationships with customers from,Europe,America and south Asia,supplying obsolete and hard-to-find components to meet their specific needs.

With the principle of “Quality Parts,Customers Priority,Honest Operation,and Considerate Service”,our business mainly focus on the distribution of electronic components. Line cards we deal with include Microchip,ALPS,ROHM,Xilinx,Pulse,ON,Everlight and Freescale. Main products comprise IC,Modules,Potentiometer,IC Socket,Relay,Connector.Our parts cover such applications as commercial,industrial, and automotives areas.

We are looking forward to setting up business relationship with you and hope to provide you with the best service and solution. Let us make a better world for our industry!



Contact us

Tel: +86-755-8981 8866 Fax: +86-755-8427 6832

Email & Skype: info@chipsmall.com Web: www.chipsmall.com

Address: A1208, Overseas Decoration Building, #122 Zhenhua RD., Futian, Shenzhen, China



FEATURES

- Max. toggle frequency of 800MHz
- Differential outputs
- IEE min. of -80mA
- Industry standard 100K ECL levels
- Extended supply voltage option:
VEE = -4.2V to -5.5V
- Voltage and temperature compensation for improved noise immunity
- Internal 75KΩ input pull-down resistors
- 150% faster than Fairchild
- 40% lower power than Fairchild
- Function and pinout compatible with Fairchild F100K
- Available in 24-pin CERPACK and 28-pin PLCC packages

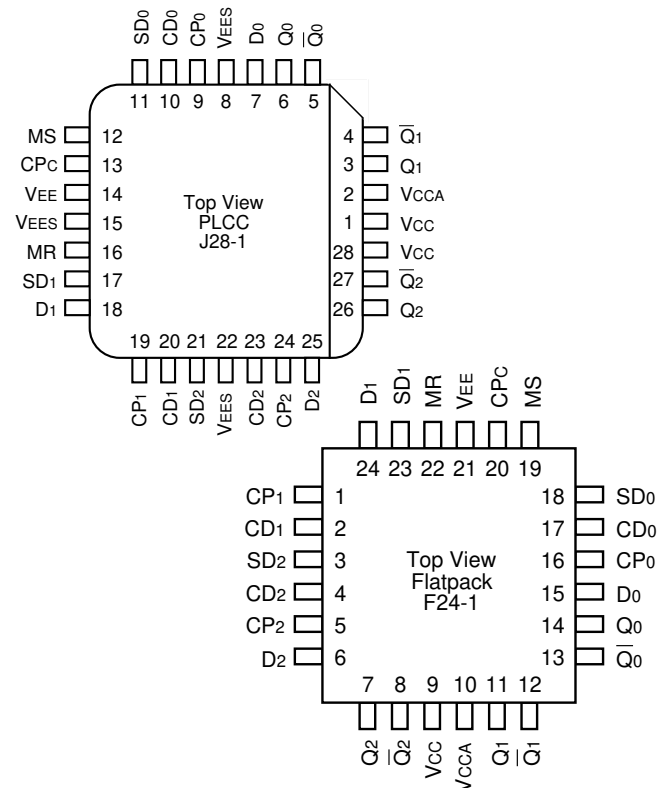
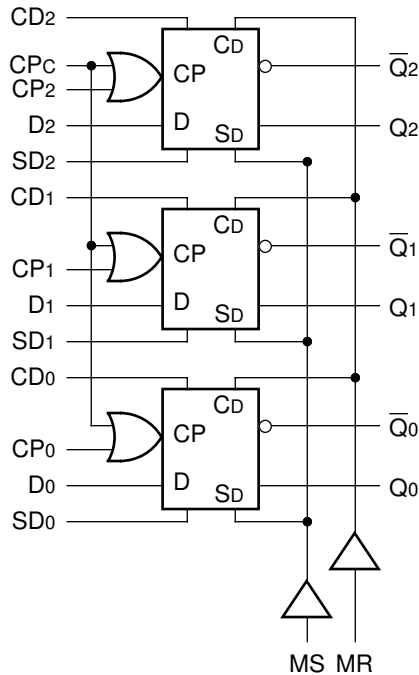
DESCRIPTION

The SY100S331 offers three D-type, edge-triggered master/slave flip-flops with true and complement outputs, designed for use in high-performance ECL systems. Each flip-flop is controlled by a common clock (CP_c), as well as its own clock pulse (CP_n). The resultant clock signal controlling the flip-flop is the logical OR operation of these two clock signals. Data enters the master when both CP_c and CP_n are LOW and enters the slave on the rising edge of either CP_c or CP_n (or both).

Additional control signals include Master Set (MS) and Master Reset (MR) inputs. Each flip-flop also has its own Direct Set (SD_n) and Direct Clear (CD_n) signals. The MR, MS, SD_n and DC_n signals override the clock signals. The inputs on this device have 75KΩ pull-down resistors.

PIN CONFIGURATIONS

BLOCK DIAGRAM



PIN NAMES

Pin	Function
CP ₀ – CP ₂	Individual Clock Inputs
CP _c	Common Clock Input
D ₀ – D ₂	Data Inputs
CD ₀ – CD ₂	Individual Direct Clear Inputs
SD _n	Individual Direct Set Inputs
MR	Master Reset Input
MS	Master Set Input
Q ₀ – Q ₂	Data Outputs
\overline{Q}_0 – \overline{Q}_2	Complementary Data Outputs
VEES	VEE Substrate
VCCA	VCCO for ECL Outputs

TRUTH TABLES

Asynchronous Operation ⁽¹⁾					
Inputs					Outputs
D _n	CP _n	CP _c	MS SD _n	MR DC _n	Q _n (t+1)
X	X	X	H	L	H
X	X	X	L	H	L
X	X	X	H	H	U

NOTE:

1. H = High Voltage Level, L = Low Voltage Level, X = Don't Care, U = Undefined, t = Time before CP Positive Transition, t+1 = Time after CP Positive Transition, u = Low-to-High Transition

Synchronous Operation ⁽¹⁾					
Inputs					Outputs
D _n	CP _n	CP _c	MS SD _n	MR DC _n	Q _n
L	u	L	L	L	L
H	u	L	L	L	H
L	L	u	L	L	L
H	L	u	L	L	H
X	L	L	L	L	Q _n (t)
X	H	X	L	L	Q _n (t)
X	X	H	L	L	Q _n (t)

NOTE:

1. H = High Voltage Level, L = Low Voltage Level, X = Don't Care, U = Undefined, t = Time before CP Positive Transition, t+1 = Time after CP Positive Transition, u = Low-to-High Transition

DC ELECTRICAL CHARACTERISTICS

VEE = -4.2V to -5.5V unless otherwise specified, VCC = VCCA = GND

Symbol	Parameter	Min.	Typ.	Max.	Unit	Condition
I _{IH}	Input HIGH Current, All Inputs	—	—	200	μA	V _{IN} = V _{IH} (Max.)
I _{EE}	Power Supply Current	-80	-65	-35	mA	Inputs Open

AC ELECTRICAL CHARACTERISTICS**CERPACK**

VEE = -4.2V to -5.5V unless otherwise specified, VCC = VCCA = GND

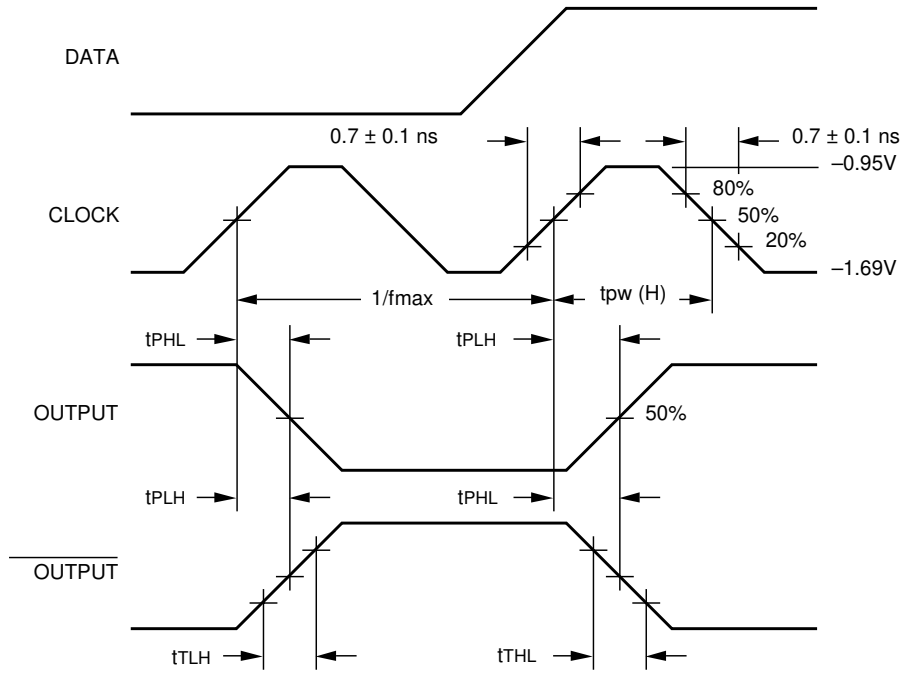
Symbol	Parameter	TA = 0°C		TA = +25°C		TA = +85°C		Unit	Condition
		Min.	Max.	Min.	Max.	Min.	Max.		
f _{max}	Toggle Frequency	800	—	800	—	800	—	MHz	
t _{PLH} t _{PHL}	Propagation Delay CP _c to Output	300	800	300	800	300	800	ps	
t _{PLH} t _{PHL}	Propagation Delay CP _n to Output	300	800	300	800	300	800	ps	
t _{PLH} t _{PHL}	Propagation Delay CD _n , SD _n to Output	300	900	300	900	300	900	ps	
t _{PLH} t _{PHL}	Propagation Delay MS, MR to Output	300	1000	300	1000	300	1000	ps	
t _{TLH} t _{THL}	Transition Time 20% to 80%, 80% to 20%	300	900	300	900	300	900	ps	
t _s	Set-up Time D _n CD _n , SD _n (Release Time) MS, MR (Release Time)	400 500 800	— — —	400 500 800	— — —	400 500 800	— — —	ps	
t _H	Hold Time D _n	300	—	300	—	300	—	ps	
t _{pw} (H)	Pulse Width HIGH CP _n , CP _c , DC _n SD _n , MR, MS	800	—	800	—	800	—	ps	

PLCC

VEE = -4.2V to -5.5V unless otherwise specified, VCC = VCCA = GND

Symbol	Parameter	TA = 0°C		TA = +25°C		TA = +85°C		Unit	Condition
		Min.	Max.	Min.	Max.	Min.	Max.		
f _{max}	Toggle Frequency	800	—	800	—	800	—	MHz	
t _{PLH} t _{PHL}	Propagation Delay CP _c to Output	300	700	300	700	300	700	ps	
t _{PLH} t _{PHL}	Propagation Delay CP _n to Output	300	700	300	700	300	700	ps	
t _{PLH} t _{PHL}	Propagation Delay CD _n , SD _n to Output	300	800	300	800	300	800	ps	
t _{PLH} t _{PHL}	Propagation Delay MS, MR to Output	300	900	300	900	300	900	ps	
t _{TLH} t _{THL}	Transition Time 20% to 80%, 80% to 20%	300	900	300	900	300	900	ps	
t _s	Set-up Time D _n CD _n , SD _n (Release Time) MS, MR (Release Time)	400 500 800	— — —	400 500 800	— — —	400 500 800	— — —	ps	
t _H	Hold Time D _n	300	—	300	—	300	—	ps	
t _{pw} (H)	Pulse Width HIGH CP _n , CP _c , DC _n SD _n , MR, MS	800	—	800	—	800	—	ps	

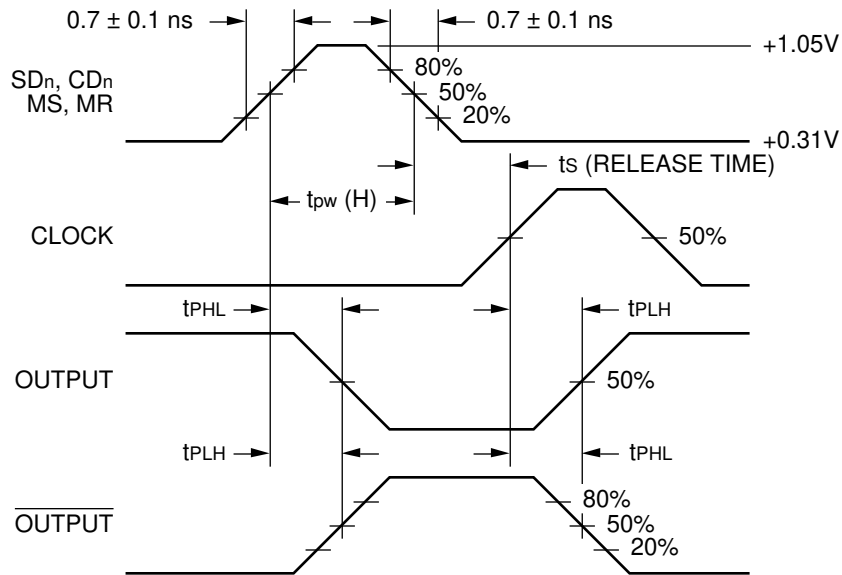
TIMING DIAGRAMS



Propagation Delay (Clock) and Transition Times

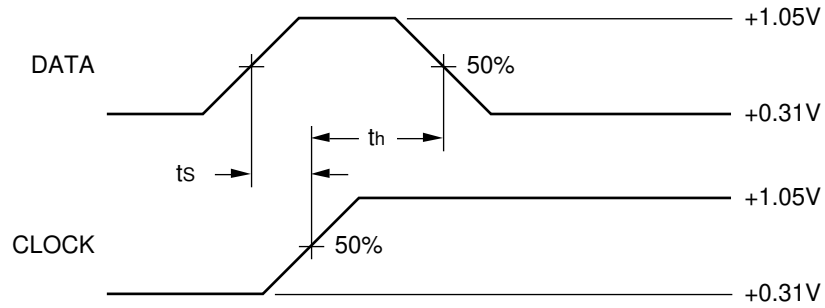
NOTE:

VEE = -4.2V to -5.5V unless otherwise specified, VCC = VCCA = GND



Propagation Delay (Sets and Resets)

TIMING DIAGRAMS



Data Setup and Hold Time

NOTES:

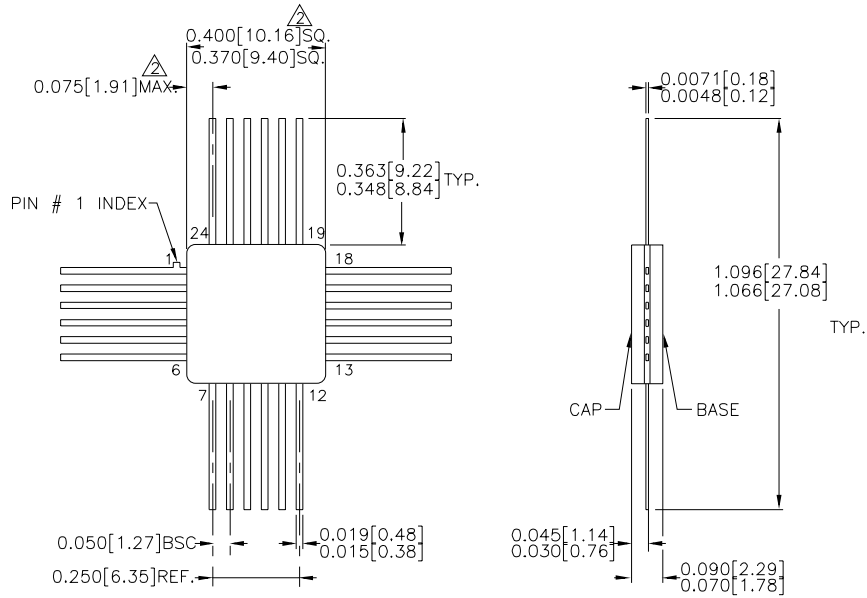
t_s is the minimum time before the transition of the clock that information must be present at the data input.

t_h is the minimum time after the transition of the clock that information must remain unchanged at the data input.

PRODUCT ORDERING CODE

Ordering Code	Package Type	Operating Range
SY100S331FC	F24-1	Commercial
SY100S331JC	J28-1	Commercial
SY100S331JCTR	J28-1	Commercial

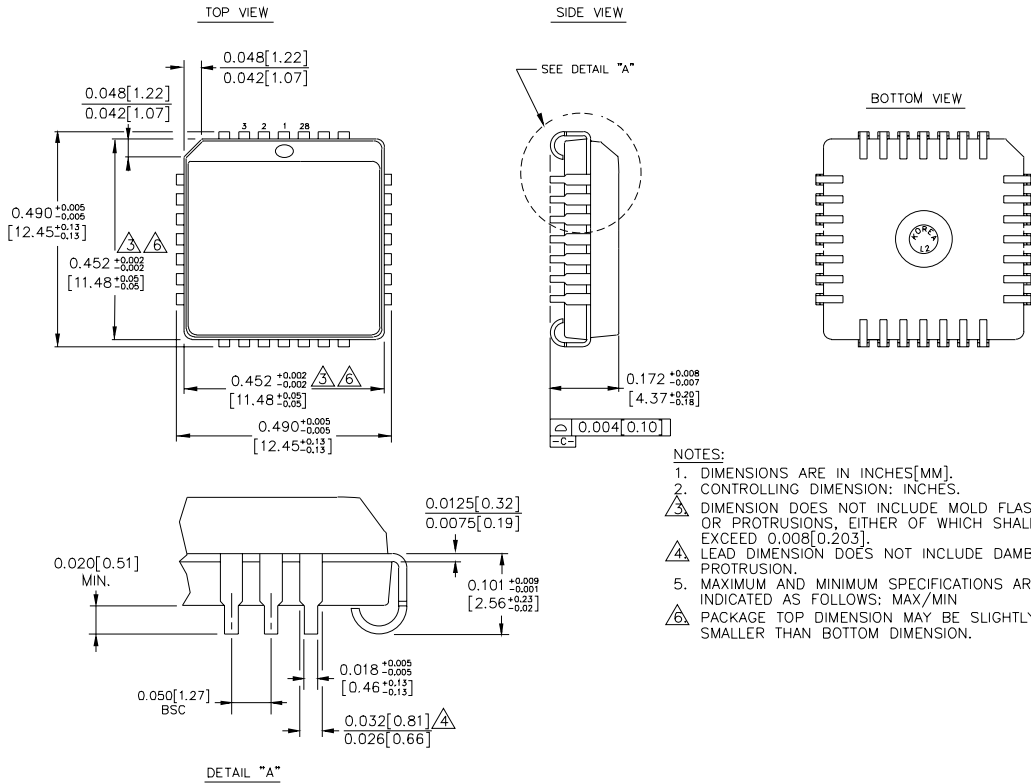
24 LEAD CERPACK (F24-1)



- NOTES:**
1. DIMENSIONS ARE IN INCHES[MM].
 2. THIS DIMENSION INCLUDES GLASS PROTRUSION AND CAP TO BASE ALIGNMENT TOLERANCES.
 3. DIMENSIONS SHOWN ARE MAX/MIN, WHERE NOTED.

Rev. 03

28 LEAD PLCC (J28-1)



Rev. 03

MICREL-SYNERGY 3250 SCOTT BOULEVARD SANTA CLARA CA 95054 USA

TEL + 1 (408) 980-9191 FAX + 1 (408) 914-7878 WEB <http://www.micrel.com>

This information is believed to be accurate and reliable, however no responsibility is assumed by Micrel for its use nor for any infringement of patents or other rights of third parties resulting from its use. No license is granted by implication or otherwise under any patent or patent right of Micrel Inc.

© 2000 Micrel Incorporated