



Chipsmall Limited consists of a professional team with an average of over 10 year of expertise in the distribution of electronic components. Based in Hongkong, we have already established firm and mutual-benefit business relationships with customers from,Europe,America and south Asia,supplying obsolete and hard-to-find components to meet their specific needs.

With the principle of “Quality Parts,Customers Priority,Honest Operation,and Considerate Service”,our business mainly focus on the distribution of electronic components. Line cards we deal with include Microchip,ALPS,ROHM,Xilinx,Pulse,ON,Everlight and Freescale. Main products comprise IC,Modules,Potentiometer,IC Socket,Relay,Connector.Our parts cover such applications as commercial,industrial, and automotives areas.

We are looking forward to setting up business relationship with you and hope to provide you with the best service and solution. Let us make a better world for our industry!



Contact us

Tel: +86-755-8981 8866 Fax: +86-755-8427 6832

Email & Skype: info@chipsmall.com Web: www.chipsmall.com

Address: A1208, Overseas Decoration Building, #122 Zhenhua RD., Futian, Shenzhen, China



WT1 and WT1H Soldering Stations

with the new high performance WTP90 soldering pencil

Conserve valuable workspace with our new, user-friendly, stackable soldering units.

These next generation, single-channel soldering stations aim to please. The detailed LCD screen enables an unprecedented overview of all functions, quick and easy to reach via the new user-friendly menu button. If you need even more performance than 90 W, then the smart solution is the higher-powered WT1H, with available power up to 150 W.



Features and Benefits

- > Front panel power switch
- > New menu button operates multi-functional LCD screen
- > New, high-performance WTP90 soldering pencil
- > 2-in-1 WSR safety rest
- > Stackable units

Technical Data	WT1	WT1H
Dimensions L x W x H	150 x 130 x 101 mm 5.91 x 5.12 x 3.98 in	
Fuse 120 V (A)	T1	T1.6
Weight	2.7 kg 5.95 lbs	3.8 kg 8.37 lbs
Power supply	120 V / 60 Hz	
Power consumption	95 W	150 W
ESD safe	Yes	
Temperature range	50 °C – 450 °C / 550 °C 150 °F – 850 °F / 950 °F (550 °C / 950 °F – WP200 only)	
Temperature accuracy	± 9 °C / ± 17 °F	



WT1 Soldering Station 90W

Order no. WT1N

WT1H Soldering Station 150W

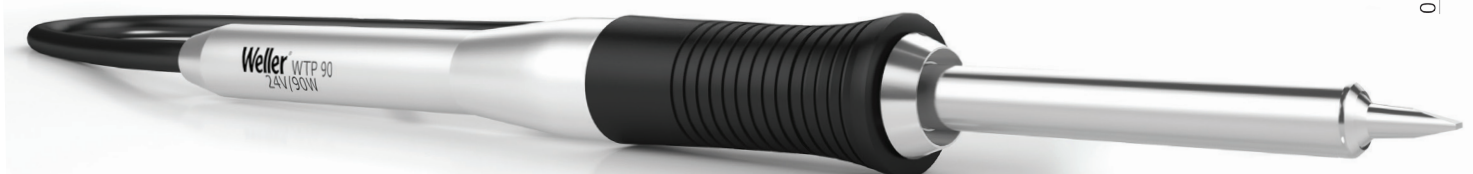
Order no. WT1HN

WTP90 Pencil, 90W

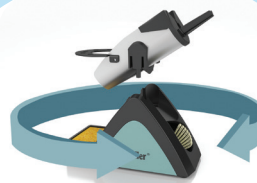
Order no. T0052922299



WTP90 complimented by new high-mass THM tips!



WT Stations, sets, pencils and tips



The unique, reversible WSR safety rest flips between sponge and brass wool.



WT1010 Set pictured.



Order no. Part description

WT Sets

WT1010N	WT1010: WT1 / WTP90 / XNT A / WSR200 120V NA
WT1011N	WT1011: WT1 / WP65 / XNT A / WSR201 120V NA
WT1012N	WT1012: WT1 / WSP80 / LT B / WSR201 120V NA
WT1013N	WT1013: WT1 / WP80 / LT B / WSR201 120V NA
WT1010HN	WT1010H: WT1H / WP120 / XT B / WSR201 120V NA
WT1011HN	WT1011H: WT1H / WP200 / XHT D / WSR202 120V NA
T0052922399	WTP90 PENCIL, WSR200 SAFETY REST

New THM Soldering Tips

T0054490499	THM A 1.6 X 0.4MM (1 PC.)
T0054490599	THM B 2.4 X 0.8MM (1 PC.)
T0054490699	THM C 3.2 X 0.8MM (1 PC.)
T0054490799	THM D 4.0 X 0.8MM (1 PC.)

Order no. Part description

Safety Rests

T0051517499	WSR200 SAFETY REST FOR WTP90
T0051517599	WSR201 SAFETY REST FOR WSP80 / WP65 / WP80 / WP120
T0051517699	WSR202 SAFETY REST FOR WSP150 / WP200

Accessories

T0058768727	WSRF200 FUNNEL REPLACEMENT FOR WSR200 / WDH51
T0058768728	WSRF201 FUNNEL REPLACEMENT FOR WSR201
T0058768729	WSRF202 FUNNEL REPLACEMENT FOR WSR202 / WDH31
T0058768726	TIP CHANGE TOOL FOR WTP90
T0058768724	BARREL / TIP RETAINER FOR WTP90
T0058768725	REPLACEMENT HEATING ELEMENT FOR WTP90
T0058768731	WSRH2 XNT TIP MOUNTING / STORAGE PLATE
T0058768732	WSRH1 LT TIP MOUNTING / STORAGE PLATE
T0058768733	WSRH3 XHT TIP MOUNTING / STORAGE PLATE
T0058768734	SILICON PAD REPLACEMENT FOR WT1 / WT1H