



Chipsmall Limited consists of a professional team with an average of over 10 year of expertise in the distribution of electronic components. Based in Hongkong, we have already established firm and mutual-benefit business relationships with customers from,Europe,America and south Asia,supplying obsolete and hard-to-find components to meet their specific needs.

With the principle of "Quality Parts,Customers Priority,Honest Operation,and Considerate Service",our business mainly focus on the distribution of electronic components. Line cards we deal with include Microchip,ALPS,ROHM,Xilinx,Pulse,ON,Everlight and Freescale. Main products comprise IC,Modules,Potentiometer,IC Socket,Relay,Connector.Our parts cover such applications as commercial,industrial, and automotives areas.

We are looking forward to setting up business relationship with you and hope to provide you with the best service and solution. Let us make a better world for our industry!




Contact us

Tel: +86-755-8981 8866 Fax: +86-755-8427 6832

Email & Skype: info@chipsmall.com Web: www.chipsmall.com

Address: A1208, Overseas Decoration Building, #122 Zhenhua RD., Futian, Shenzhen, China



NOTICE:	THIS IS A RoHS COMPLIANT COMPONENT/PRODUCT. ALL ENGINEERING CHANGES MUST HAVE PRIOR APPROVAL BY THE DESIGN CENTER.
RoHS 	

TEST NOTES:

UNLESS OTHERWISE SPECIFIED, TESTING IS PERFORMED AT 25°C ±5°C.

1. TURNS RATIO AND POLARITY: 100 KHz, 0.02 VRMS (100%)

$$\frac{(6-8)}{(11-9)} = 1.0 \pm 2\%$$

$$\frac{(16-14)}{(1-3)} = 2.4 \pm 2\%$$

* SET PTT PARAMETER AS SPTRP: PRI LEVEL 20 mV, SEC LEVEL 70 mV.

2. 2.1 INDUCTANCE (OCL): 100 KHz, 0.100 VRMS (100%)
(1-3) = (11-9) = 1.0 mH MINIMUM

- 2.2 INDUCTANCE (OCL): 100 KHz, 0.100 VRMS AT -40 CENTIGRADE DEGREES (SAMPLE)
(1-3) = (11-9) = 600 uH MINIMUM

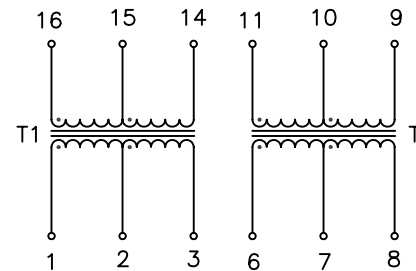
3. LEAKAGE INDUCTANCE (LL): 100 KHz, 0.2 VRMS (100%)
(1-3) WITH (16-14) SHORT = 0.8 uH MAXIMUM
(11-9) WITH (6-8) SHORT = 0.8 uH MAXIMUM

4. INTERWINDING CAPACITANCE (CCW): 100 KHz, 1 VRMS (100%)
(16-14) TO (1-3) = 30 pF MAXIMUM
(6-8) TO (11-9) = 30 pF MAXIMUM

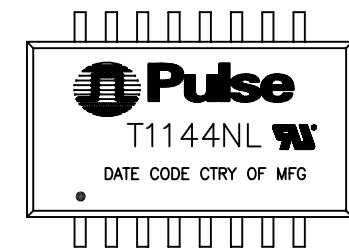
5. DC RESISTANCE (DCR): (100%)
(1-3) = 0.85 OHM MAXIMUM
(16-14) = 2.0 OHM MAXIMUM
(6-8) = 0.85 OHM MAXIMUM
(11-9) = 0.85 OHM MAXIMUM

6. HIPOT: (100%)
(1-3) TO (16-14) } = 1500 VRMS FOR 1 MINUTE OR
(6-8) TO (11-9) } 1650 VRMS FOR 6 SECONDS
(3-14) TO (6-11) = 500 VRMS FOR 6 SECONDS

OTHERS:
CHECK MECHANICAL DIMENSIONS PER PS-0010.001



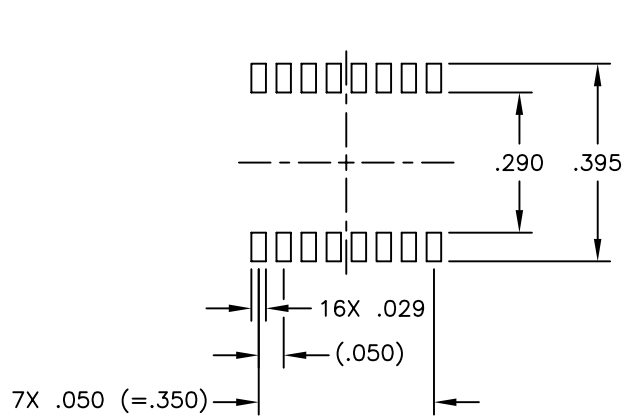
SCHEMATIC



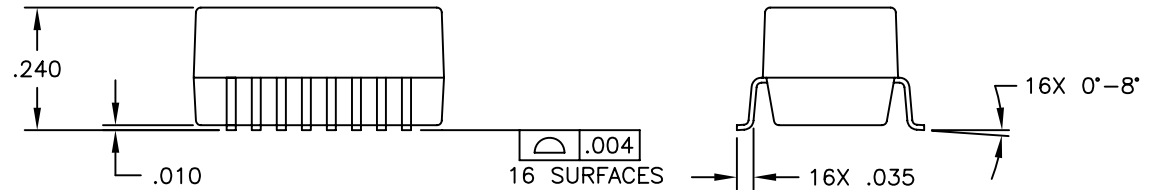
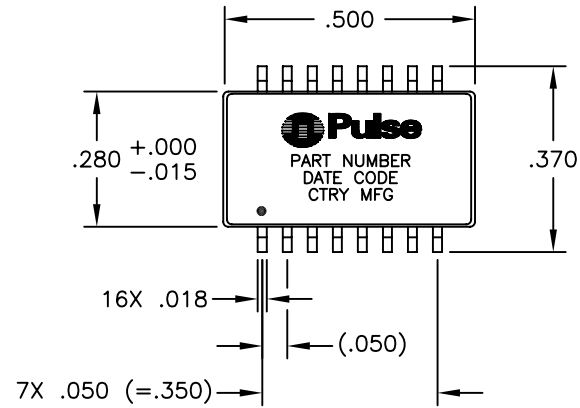
NOTE: TO ORDER TAPE & REEL PACKAGING ADD A "T" SUFFIX TO THE PART NUMBER(i.e T1144NL BECOMES T1144NLT).

© Copyright, 2010. Pulse Engineering, Inc. All rights reserved. Drawing specifications subject to change without notice. (01/21/11)

PULSE CONFIDENTIAL & PROPRIETARY	PRODUCT DESCRIPTION	PS DRAWING	SHEET:	DWG. NO./ PART NO.	REV.
	XFMR,DUAL,T1,BH,ET,1:2.4,1:1	PS-0010.001-D	1	T1144NL	M17



SUGGESTED LAND PATTERN



UNLESS OTHERWISE SPECIFIED, ALL
DIMENSIONS ARE IN INCHES
TOLERANCES ARE:

DECIMALS	ANGLES
.XX ±.01	± 1°
.XXX ±.005	

© Copyright, 2010. Pulse Engineering, Inc. All rights reserved. Drawing specifications subject to change without notice. (01/21/11)

PULSE CONFIDENTIAL & PROPRIETARY	PRODUCT DESCRIPTION	PS DRAWING	SHEET:	DWG. NO./ PART NO.	REV.
	XFMR,DUAL,T1,BH,ET,1:2.4,1:1	PS-0010.001-D	2	T1144NL	M17