



Chipsmall Limited consists of a professional team with an average of over 10 year of expertise in the distribution of electronic components. Based in Hongkong, we have already established firm and mutual-benefit business relationships with customers from,Europe,America and south Asia,supplying obsolete and hard-to-find components to meet their specific needs.

With the principle of “Quality Parts,Customers Priority,Honest Operation,and Considerate Service”,our business mainly focus on the distribution of electronic components. Line cards we deal with include Microchip,ALPS,ROHM,Xilinx,Pulse,ON,Everlight and Freescale. Main products comprise IC,Modules,Potentiometer,IC Socket,Relay,Connector.Our parts cover such applications as commercial,industrial, and automotives areas.

We are looking forward to setting up business relationship with you and hope to provide you with the best service and solution. Let us make a better world for our industry!



Contact us

Tel: +86-755-8981 8866 Fax: +86-755-8427 6832

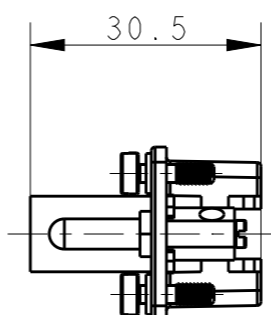
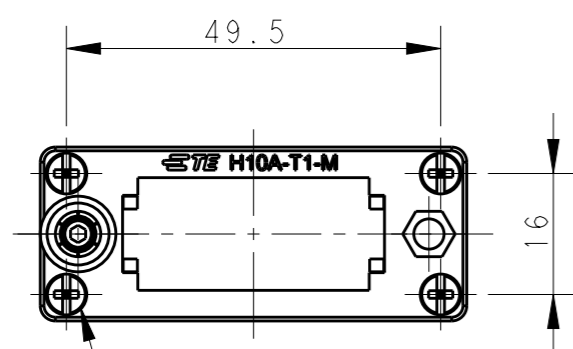
Email & Skype: info@chipsmall.com Web: www.chipsmall.com

Address: A1208, Overseas Decoration Building, #122 Zhenhua RD., Futian, Shenzhen, China

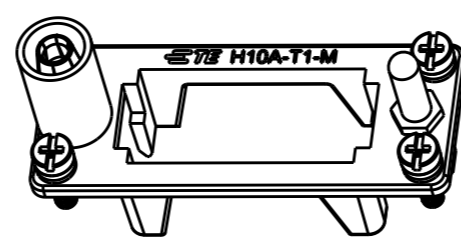
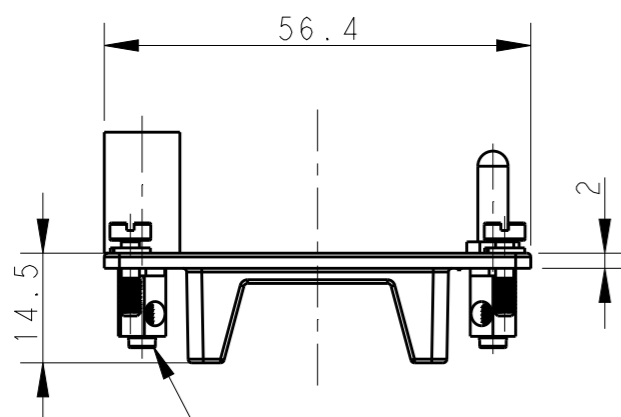


THIS DRAWING IS UNPUBLISHED. RELEASED FOR PUBLICATION 20
 © COPYRIGHT 20 BY - ALL RIGHTS RESERVED.

REVISIONS					
P	LTR	DESCRIPTION	DATE	DWN	APVD
	A	INITIAL	17OCT2016	BS	CW
	A1	ECR-17-012981	06SEP2017	BS	CW



4X M3 SCREW
 RECOMMENDED TIGHTENING TORQUE 0.5Nm
 4X M3 螺丝
 推荐力矩0.5Nm

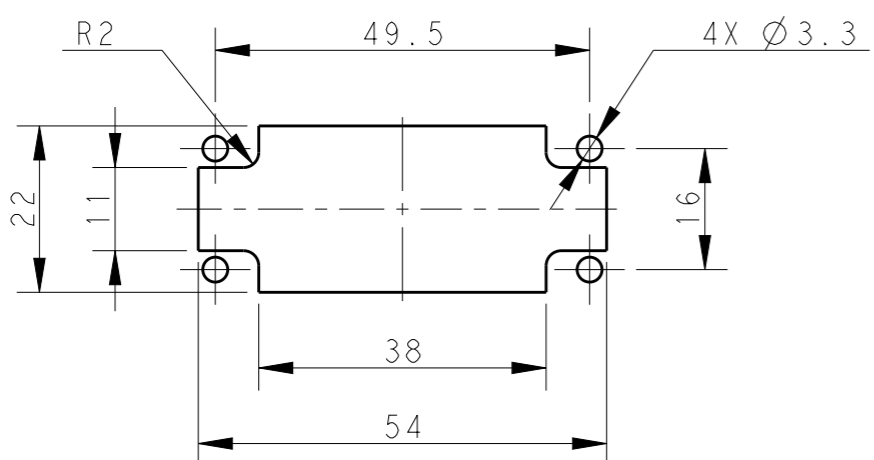


2X M3 SCREW
 RECOMMENDED TIGHTENING TORQUE 0.5Nm
 2X M3 螺丝
 推荐力矩0.5Nm

NOTES:
 1. TECHNICAL CHARACTERISTICS:
 FRAME MATERIAL: DIE CAST ZINC ALLOY
 NUMBER OF MODULES: 1
 SURFACE: SEE TABLE
 MATING CYCLES: 500 CYCLES

注释:
 1. 技术参数:
 框架材料: 锌合金
 模块数量: 1
 表面处理: 见表格
 插拔次数: 500次

PANEL CUT FOR FRAME USE WITHOUT HOODS/ HOUSINGS
 不使用防护外壳时框架的安装开孔图

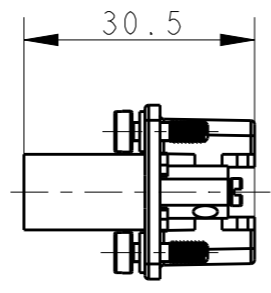
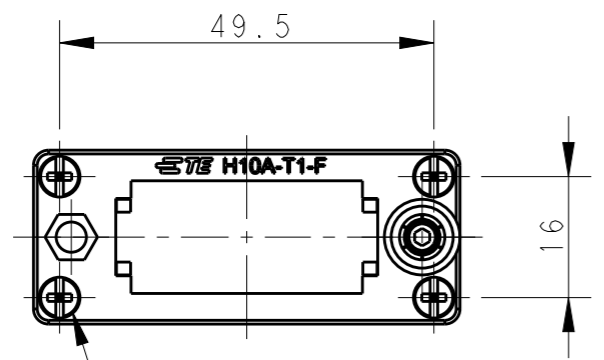


PART NUMBER	料号	PART DESCRIPTION	描述
T2079104101-000	H10A-T1-M	H10A MALE MODULE FRAME, ZINC PLATED	H10A模块公框架, 镀锌
T2079104201-000	H10A-T1-F	H10A FEMALE MODULE FRAME, ZINC PLATED	H10A模块母框架, 镀锌
T2079104101-001	H10A-T1-M	H10A MALE MODULE FRAME, NICKEL PLATED	H10A模块公框架, 镀镍
T2079104201-001	H10A-T1-F	H10A FEMALE MODULE FRAME, NICKEL PLATED	H10A模块母框架, 镀镍

THIS DRAWING IS A CONTROLLED DOCUMENT.		DWN BELL SU 17OCT2016	TE Connectivity				
DIMENSIONS: mm		CHK KYLE ZENG 17OCT2016			NAME H10A-T1		
TOLERANCES UNLESS OTHERWISE SPECIFIED:		APVD CHRIS WANG 17OCT2016					
0 PLC ±- 1 PLC ±- 2 PLC ±- 3 PLC ±- 4 PLC ±- ANGLES ±-		PRODUCT SPEC -					
MATERIAL -		APPLICATION SPEC -	SIZE A3	CAGE CODE -	DRAWING NO. ©-T2079104X01000	RESTRICTED TO -	
FINISH -		WEIGHT -	CUSTOMER DRAWING		SCALE 1:1	SHEET 1 OF 2	REV A1

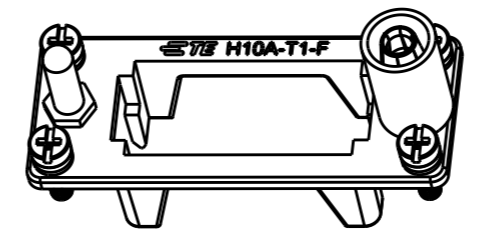
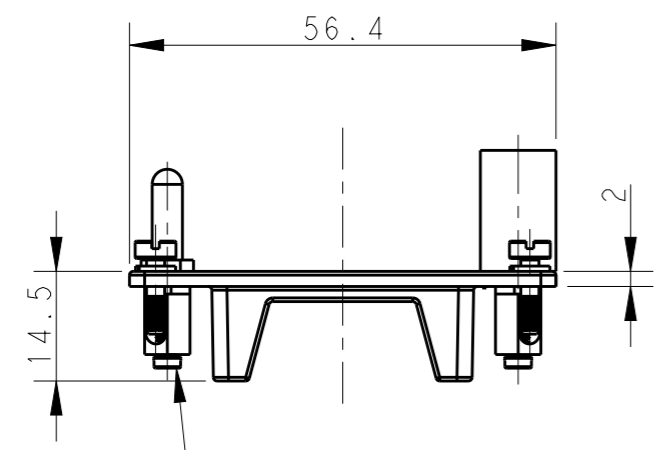
THIS DRAWING IS UNPUBLISHED. RELEASED FOR PUBLICATION 20
 © COPYRIGHT 20 BY - ALL RIGHTS RESERVED.

REVISIONS					
P	LTR	DESCRIPTION	DATE	DWN	APVD
		SEE SHEET 1			



NOTES:
SEE SHEET 1

4X M3 SCREW
RECOMMENDED TIGHTENING TORQUE 0.5Nm
4X M3 螺丝
推荐力矩0.5Nm



2X M3 SCREW
RECOMMENDED TIGHTENING TORQUE 0.5Nm
2X M3 螺丝
推荐力矩0.5Nm

THIS DRAWING IS A CONTROLLED DOCUMENT.		DWN BELL SU 17OCT2016	TE Connectivity		
DIMENSIONS: mm		CHK KYLE ZENG 17OCT2016			
TOLERANCES UNLESS OTHERWISE SPECIFIED:		APVD CHRIS WANG 17OCT2016	PRODUCT SPEC		
0 PLC ±- 1 PLC ±- 2 PLC ±- 3 PLC ±- 4 PLC ±- ANGLES ±-		APPLICATION SPEC	RESTRICTED TO		
MATERIAL		WEIGHT	SIZE A3	CAGE CODE -	DRAWING NO. ©-T2079104X01000
FINISH		CUSTOMER DRAWING	SCALE 1:1	SHEET 2 OF 2	REV A1